

# FOR SALE OR LEASE:

698 N MAITLAND AVE.  
MAITLAND, FL 32751



**SALE PRICE: \$825,000**

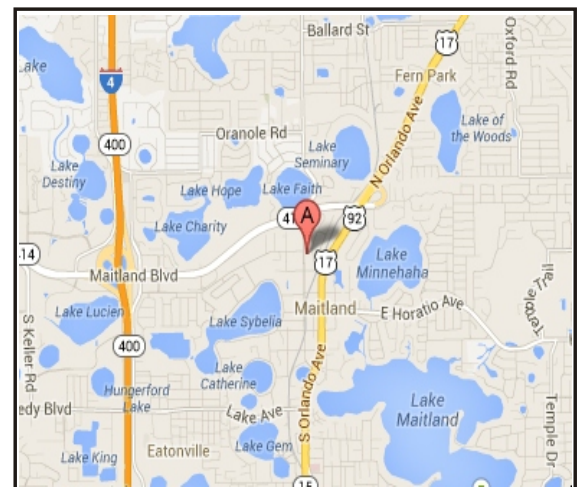
**LEASE: ±1,800 SF AVAILABLE FOR LEASE**

#### **SUMMARY:**

- ♦ ±4,899 SF total building size
- ♦ Intersection of Maitland Ave and Sandspur (south of Maitland Blvd)
- ♦ 18 parks

#### **FEATURES:**

- ♦ **BRAND NEW** barrel tile roof
- ♦ Monument signage
- ♦ Mature landscaping
- ♦ Perfect for professional owner/user as vacant or add'l income may be available from existing tenants



**CITY COMMERCIAL**

**For further information, contact**

**Lee Zerivitz, CCIM**

**Office: 407.644.CITY (2489)**

**Cell: 407.929.3598**

**Email: [lee@citycommercial.com](mailto:lee@citycommercial.com)**

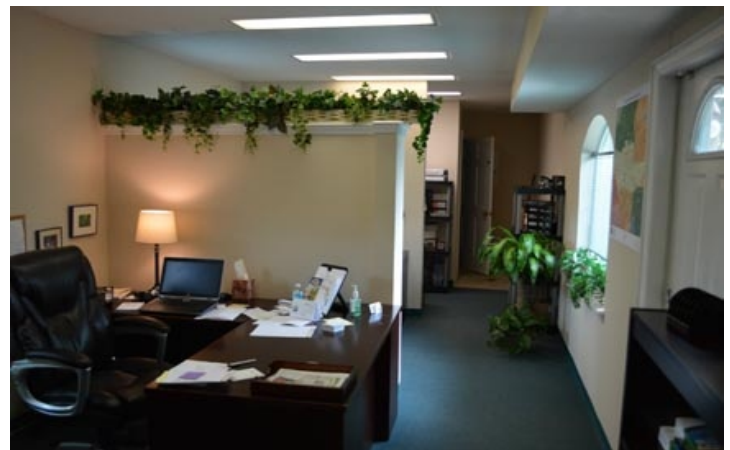
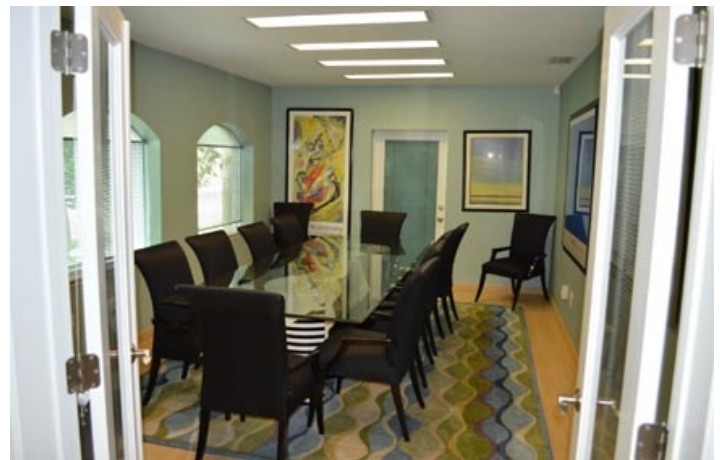
**Web: [www.CityCommercial.com](http://www.CityCommercial.com)**

**213 West Comstock Avenue ♦ Winter Park, FL 32789**

CITY Commercial is the agent of the Landlord or Seller of this property and will be paid by the Landlord or Seller. All information furnished with respect to the subject property has been obtained from sources deemed reliable. No representation as to accuracy thereof is made. This offering is subject to errors, omissions, prior sales or withdrawal without notice.

# FOR SALE:

698 N MAITLAND AVE.  
MAITLAND, FL 32751



**CITY** COMMERCIAL

For further information, contact

Lee Zerivitz, CCIM

Office: 407.644.CITY (2489)

Cell: 407.929.3598

Email: [lee@citycommercial.com](mailto:lee@citycommercial.com)

Web: [www.CityCommercial.com](http://www.CityCommercial.com)

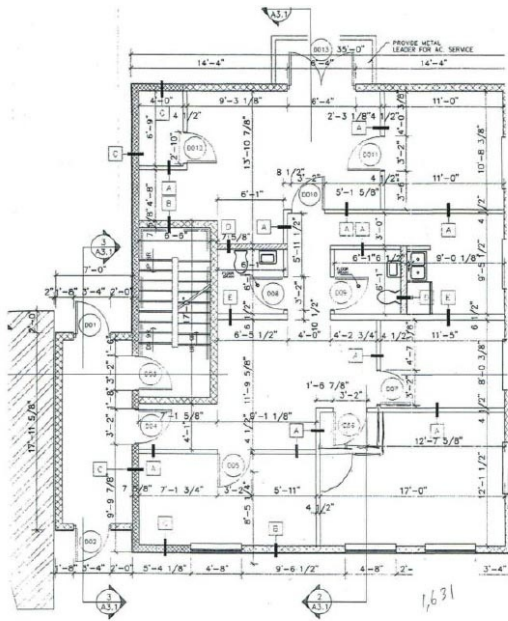
213 West Comstock Avenue ♦ Winter Park, FL 32789

CITY Commercial is the agent of the Landlord or Seller of this property and will be paid by the Landlord or Seller. All information furnished with respect to the subject property has been obtained from sources deemed reliable. No representation as to accuracy thereof is made. This offering is subject to errors, omissions, prior sales or withdrawal without notice.

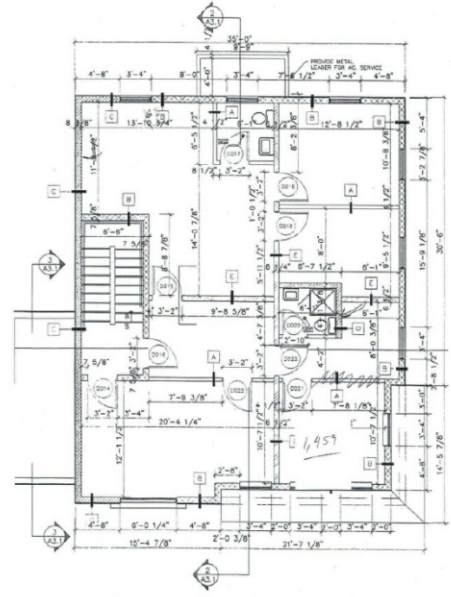


# FOR SALE:

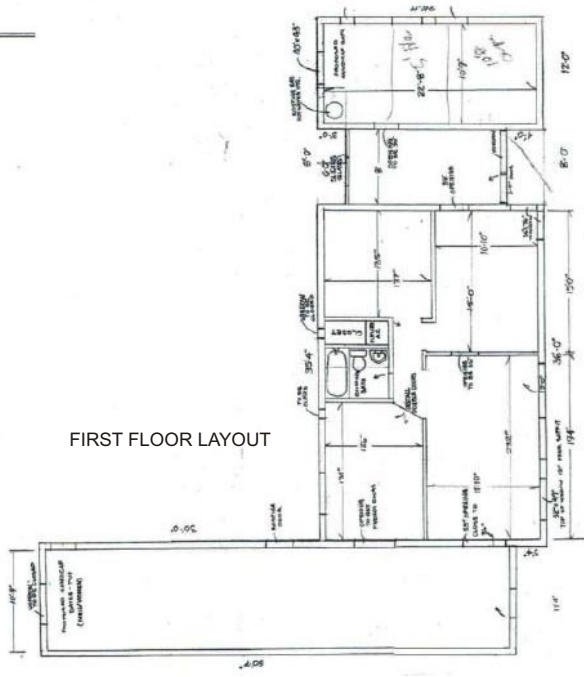
698 N MAITLAND AVE.  
MAITLAND, FL 32751



1 FIRST FLOOR LAYOUT  
1/4"=1'



2 SECOND FLOOR LAYOUT



FIRST FLOOR LAYOUT

# CITY COMMERCIAL

For further information, contact  
**Lee Zerivitz, CCIM**  
Office: 407.644.CITY (2489)  
Cell: 407.929.3598  
Email: lee@citycommercial.com  
Web: www.CityCommercial.com

213 West Comstock Avenue ♦ Winter Park, FL 32789

CITY Commercial is the agent of the Landlord or Seller of this property and will be paid by the Landlord or Seller. All information furnished with respect to the subject property has been obtained from sources deemed reliable. No representation as to accuracy thereof is made. This offering is subject to errors, omissions, prior sales or withdrawal without notice.