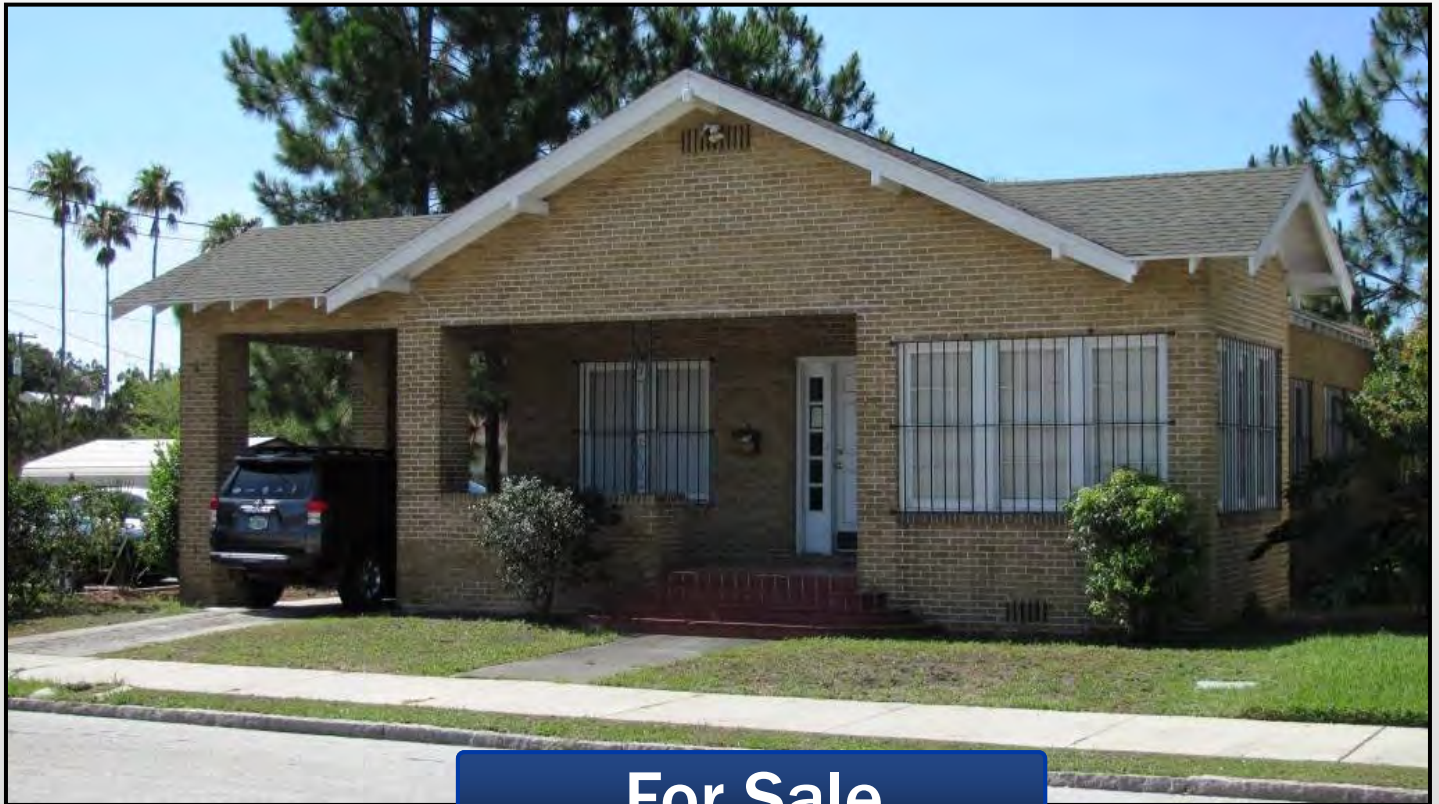


# Six-Office Building in North Hyde Park

2106 W Cass St, Tampa, FL 33606

\$299,000

1,933 sf



**For Sale**

**“Move-in Condition” 1933 sq ft total, zoned CG, six-office commercial building across from the proposed Jewish Community Center on Howard Ave. Construction is three bricks thick, two reds, and one beige. Even the gable ends are a triangle of bricks for extreme construction strength for winds blowing at gables. Perimeter and motion detector for security system, and deadbolts. Single car garage and drive through carport make the parking ample and traffic flow easy. Rear has great access to alley, which is cleared of debris and clean and neat. Drive into the property from Cass and out to Albany. Building is ready with ample electric, phone, and high speed Vios lines. All parts are protected by surge.**

**Prepared by:**

**Ted Hager**

**Commercial Specialist  
RECS, GRI, BSIE, ME, SSRS, BBF**

**Direct Phone: 813-440-5946**

**Toll Free: 800-677-2113**

**TedHager@TeamHager.com**

**www.TeamHager.com**



**NRT**

[www.cbcworldwide.com](http://www.cbcworldwide.com)

**2201 Swann Ave, Suite 100  
(813) 440-5946**

# Six-Office Building in North Hyde Park

2106 W Cass St, Tampa, FL 33606

\$299,000

1,933 sf



**Great Roof**



**Addtl Parking and Garage**



**Lots of Parking**



**Ramp to Rear**

**Prepared by:**

**Ted Hager**

**Commercial Specialist**

**RECS, GRI, BSIE, ME, SSRS, BBF**

**Direct Phone: 813-440-5946**

**Toll Free: 800-677-2113**

**TedHager@TeamHager.com**

**www.TeamHager.com**



**NRT**

[www.cbcworldwide.com](http://www.cbcworldwide.com)

2201 Swann Ave, Suite 100  
(813) 440-5946

# Six-Office Building in North Hyde Park

2106 W Cass St, Tampa, FL 33606

\$299,000

1,933 sf



**Alley is kept clean**



**Security**



**Surge Protection**



**Wide Street Scene**

Prepared by:

**Ted Hager**

Commercial Specialist

RECS, GRI, BSIE, ME, SSRS, BBF

Direct Phone: 813-440-5946

Toll Free: 800-677-2113

TedHager@TeamHager.com

www.TeamHager.com



NRT

[www.cbcworldwide.com](http://www.cbcworldwide.com)

2201 Swann Ave, Suite 100  
(813) 440-5946

# Six-Office Building in North Hyde Park

2106 W Cass St, Tampa, FL 33606

\$299,000

1,933 sf



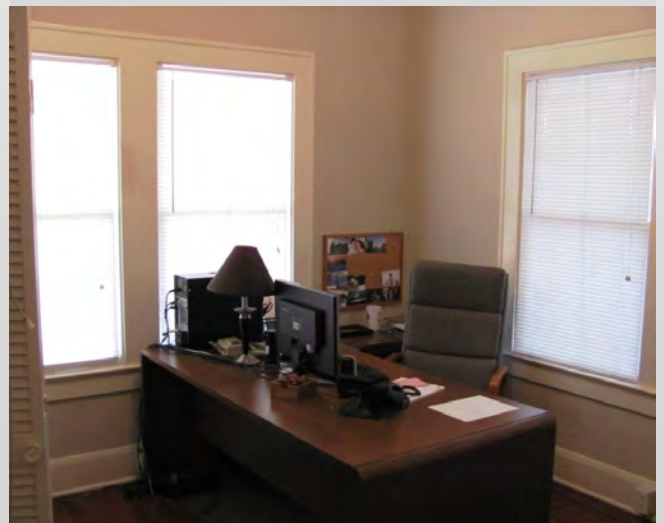
Foyer



Foyer



Boss Office



Corner Desks

Prepared by:

**Ted Hager**

Commercial Specialist

RECS, GRI, BSIE, ME, SSRS, BBF

Direct Phone: 813-440-5946

Toll Free: 800-677-2113

TedHager@TeamHager.com

www.TeamHager.com



NRT

[www.cbcworldwide.com](http://www.cbcworldwide.com)

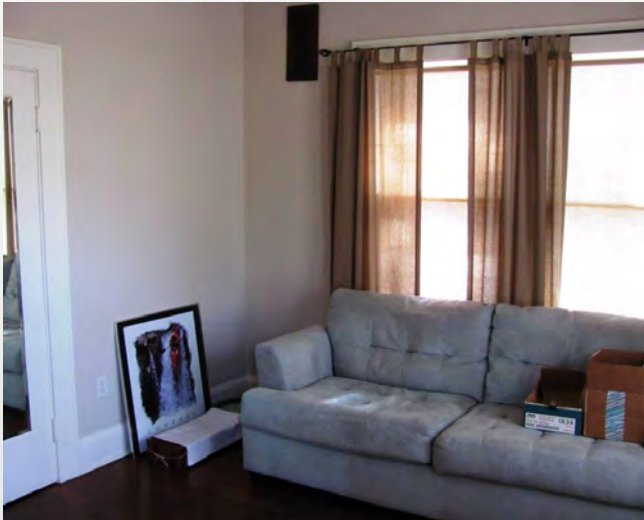
2201 Swann Ave, Suite 100  
(813) 440-5946

# Six-Office Building in North Hyde Park

2106 W Cass St, Tampa, FL 33606

\$299,000

1,933 sf



**Back Office off Porch**



**IT Assembly & Work Room**



**IT Work Benches**



**Offices**

Prepared by:

**Ted Hager**

Commercial Specialist

RECS, GRI, BSIE, ME, SSRS, BBF

Direct Phone: 813-440-5946

Toll Free: 800-677-2113

TedHager@TeamHager.com

www.TeamHager.com



NRT

[www.cbcworldwide.com](http://www.cbcworldwide.com)

2201 Swann Ave, Suite 100  
(813) 440-5946

# Six-Office Building in North Hyde Park

2106 W Cass St, Tampa, FL 33606

\$299,000

1,933 sf



Office with Super Lighting



All Ofcs have ample elec & Hi Speed



Remodeled Bath



File Room

Prepared by:

**Ted Hager**

Commercial Specialist

RECS, GRI, BSIE, ME, SSRS, BBF

Direct Phone: 813-440-5946

Toll Free: 800-677-2113

TedHager@TeamHager.com

www.TeamHager.com



NRT

[www.cbcworldwide.com](http://www.cbcworldwide.com)

2201 Swann Ave, Suite 100  
(813) 440-5946

# Six-Office Building in North Hyde Park

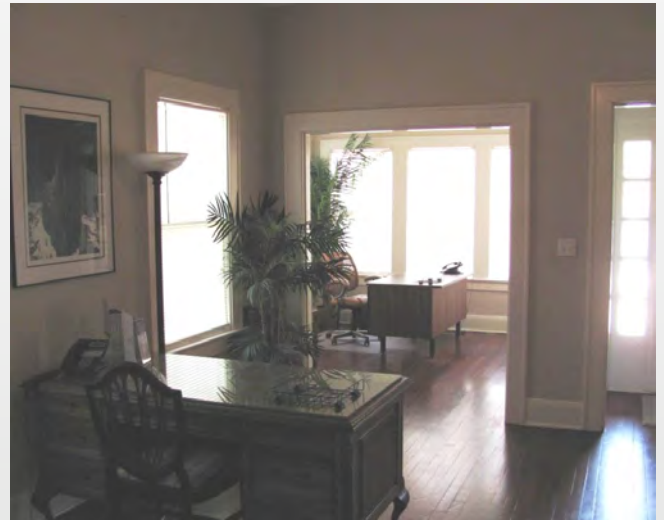
2106 W Cass St, Tampa, FL 33606

\$299,000

1,933 sf



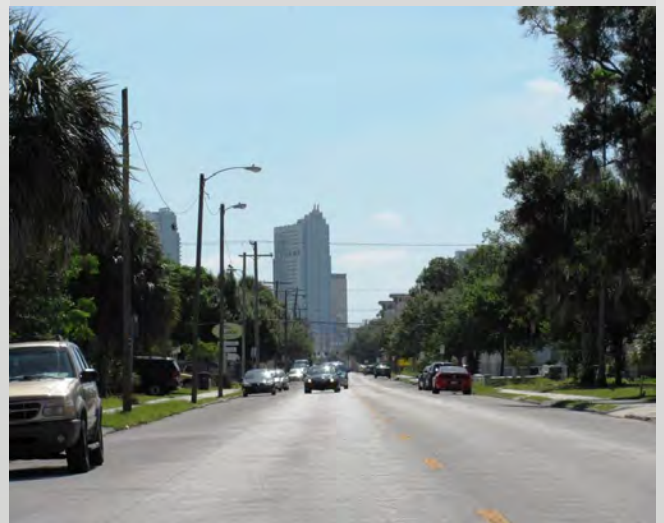
**File and Break Room**



**Offices**



**Walking to JCC**



**Near Downtown**

**Prepared by:**

**Ted Hager**

**Commercial Specialist**

**RECS, GRI, BSIE, ME, SSRS, BBF**

**Direct Phone: 813-440-5946**

**Toll Free: 800-677-2113**

**TedHager@TeamHager.com**

**www.TeamHager.com**



**NRT**

[www.cbcworldwide.com](http://www.cbcworldwide.com)

**2201 Swann Ave, Suite 100  
(813) 440-5946**

# Six-Office Building in North Hyde Park

2106 W Cass St, Tampa, FL 33606

\$299,000

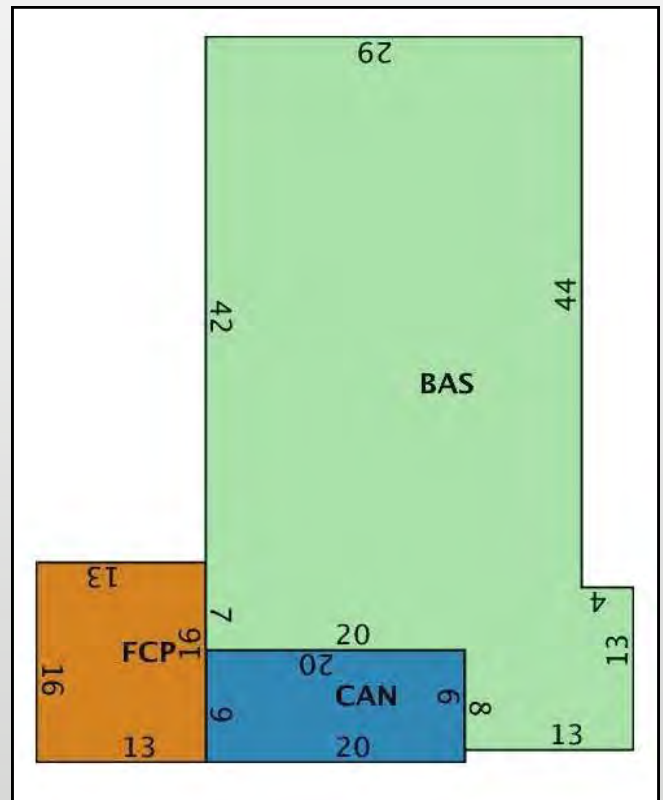
1,933 sf



Neighbor Across Street



Neighbor Next Door



Building Sketch

Prepared by:

**Ted Hager**

Commercial Specialist  
RECS, GRI, BSIE, ME, SSRS, BBF

Direct Phone: 813-440-5946

Toll Free: 800-677-2113

TedHager@TeamHager.com

www.TeamHager.com



NRT

www.cbcworldwide.com

2201 Swann Ave, Suite 100  
(813) 440-5946





Six-Office Building in North Hyde Park

2106 W Cass St, Tampa, FL 33606

\$299,000

1,933 sf

## Future Jewish Community Center



Prepared by:

**Ted Hager**

Commercial Specialist

RECS, GRI, BSIE, ME, SSRS, BBF

Direct Phone: 813-440-5946

Toll Free: 800-677-2113

TedHager@TeamHager.com

www.TeamHager.com



NRT

[www.cbcworldwide.com](http://www.cbcworldwide.com)

2201 Swann Ave, Suite 100  
(813) 440-5946