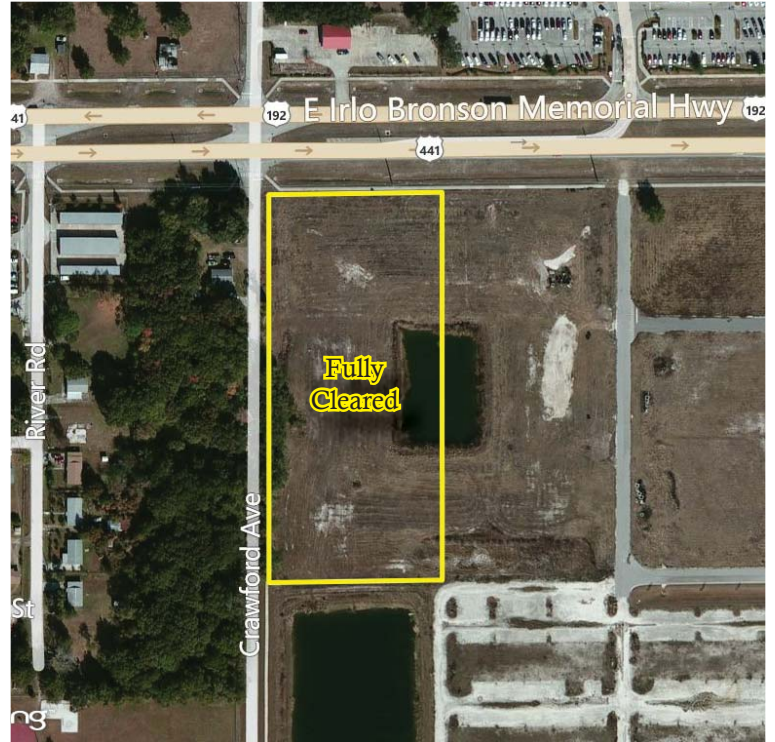


4.8+/- AC ON E IRLO BRONSON MEMORIAL HWY

850 E IRLO BRONSON MEMORIAL HWY, ST. CLOUD, FL 34771

VACANT LAND FOR SALE



\$500,000 PRICE REDUCED

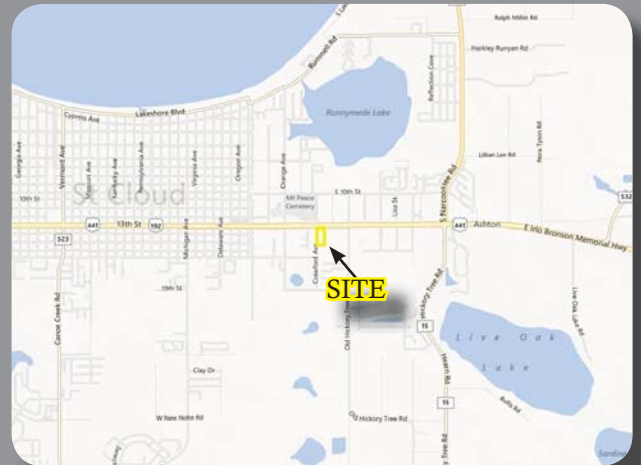
HIGHLIGHTS

- 4.8+/- ac Available
- 300+/- Frontage ft. on E Irlo Bronson Memorial Hwy
- 700+/- Frontage ft. on Crawford Ave
- Fully Cleared. Shared Retention.
- 45,000 Cars Per Day
- "Highway Business" Zoning

SUMMARY

Short Sale. 4.8+/- acres located on E Irlo Bronson Memorial Hwy in the heart of Saint Cloud. Fully cleared with 300+/- ft. of highway frontage and a shared retention pond. Hard corner with curb cuts allowing for a left and right turn onto E Irlo Bronson.

The information contained herein has been given to us by the owner of the property or other sources we deem reliable. We have no reason to doubt its accuracy, but we do not guarantee it. This is subject to errors, omissions, or change of price and conditions. All information should be verified prior to purchase or lease.



FUSILIER
REALTY GROUP

RICHIE FRUCCI

DIRECT 321.303.6726

FAX 407.982.7031

RICHARD.FRUCCI@GMAIL.COM