

SALE COMMERCIAL

NEC Budinger @ 15th St.
St. Cloud, FL 34769

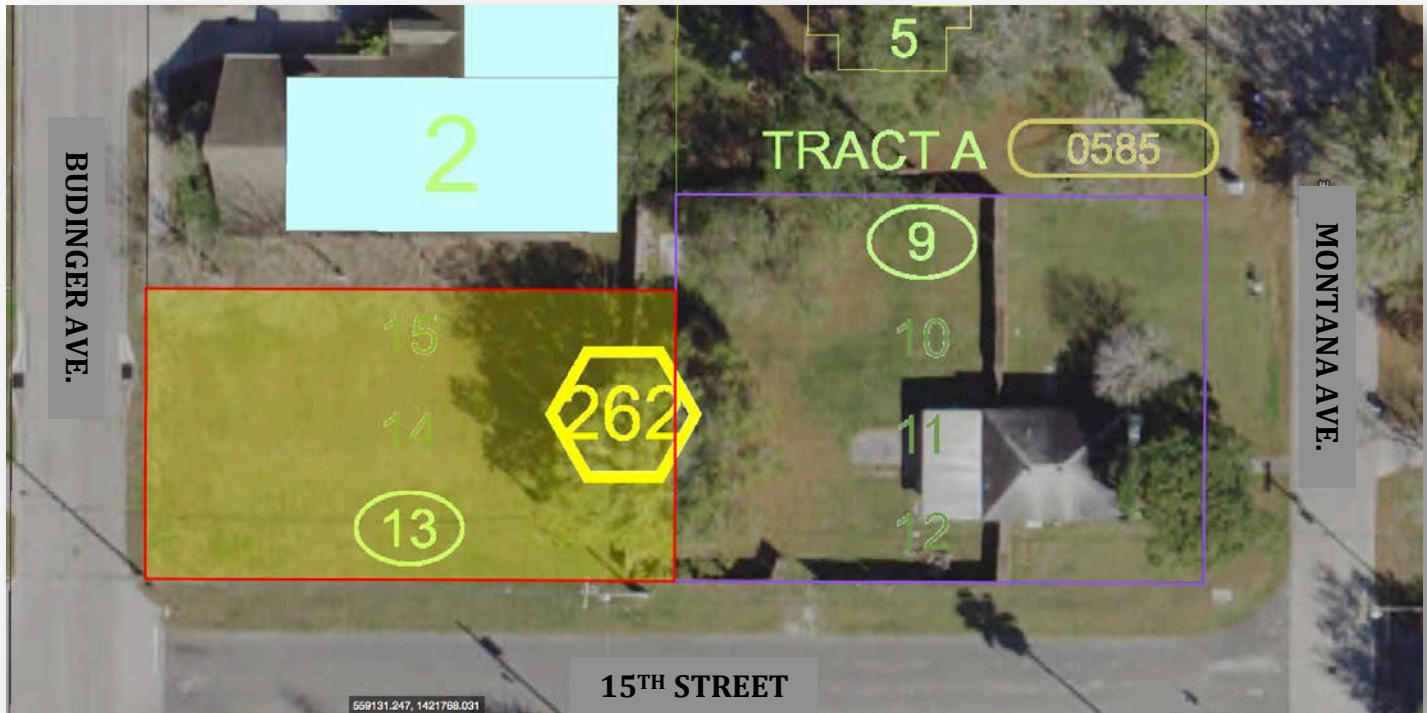
PRICED LOW TO SELL!

LAND:

.24± Acres

SALE PRICE

\$65,000^{.00}



VACANT COMMERCIAL LAND

Large corner lot!

Parcel ID: 01-26-30-0001-0262-0130

County: Osceola

Frontage: 75' - Budinger Avenue
137.5' - 15th Street

Zoning: P – Professional, City of St. Cloud

LOCATION:

NEC Budinger and 15th Street is located just 2 blocks south of a major east/west retail artery, US Hwy 192 (E Irlo Bronson Memorial Hwy)

One block from St. Cloud Regional Medical Center

DISTANCES:

.1 mile	US Hwy 192 (E Irlo Bronson Mem. Hwy)
.2 mile	St. Cloud Regional Memorial Hospital
2.7 miles	Florida Turnpike via Kissimmee Park Rd.



LIGHTLE BECKNER ROBISON
INCORPORATED
COMMERCIAL REAL ESTATE SERVICES

www.TeamLBR.com

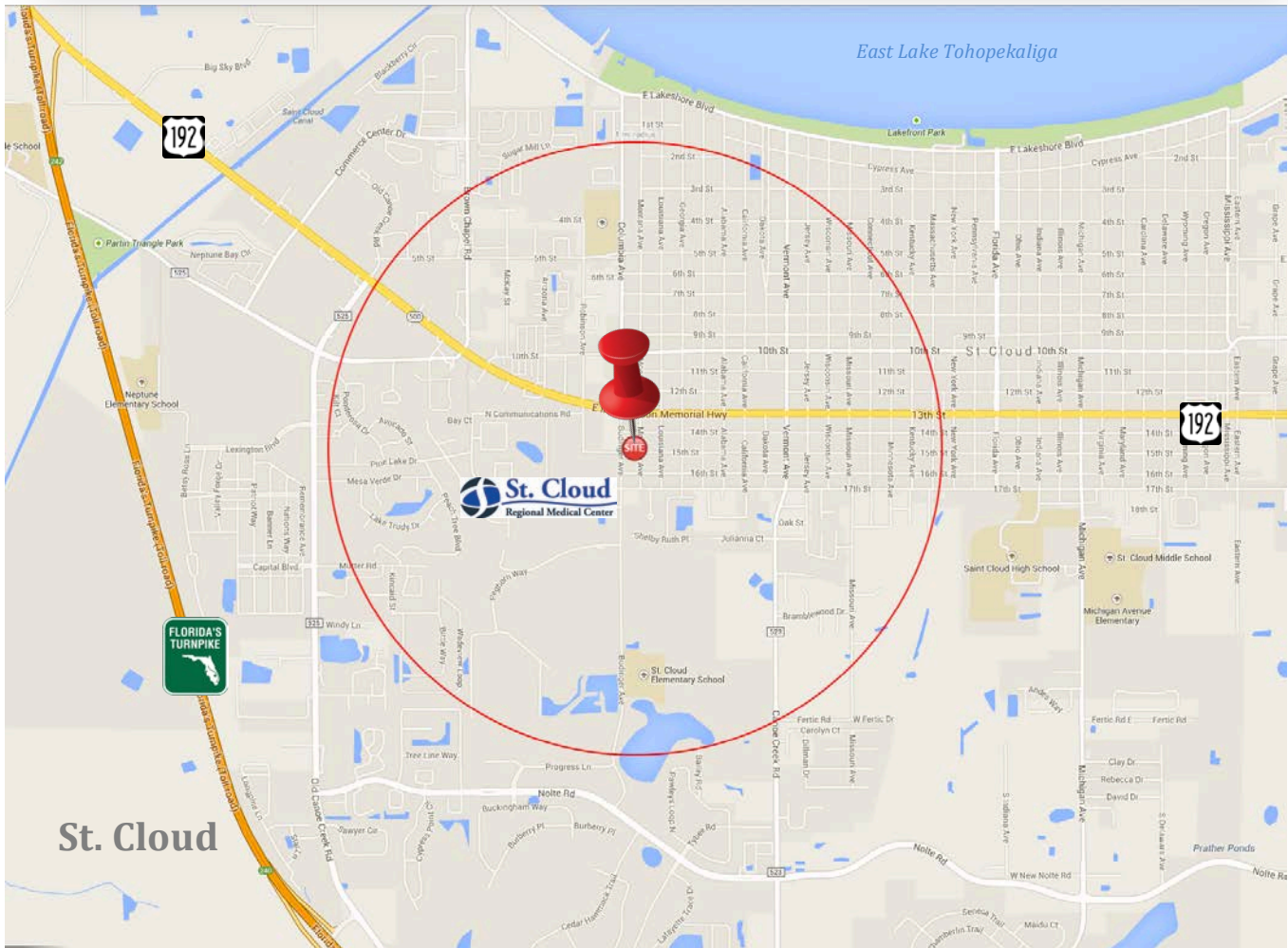
© Lightle Beckner Robison, Inc.
All Rights Reserved

Rob Beckner, Principal
Medical and Office Properties

(321) 722-0707 x11
Rob@TeamLBR.com

70 W. Hibiscus Blvd. · Melbourne, Florida 32901 · (321) 722-0581 fax

Information contained herein has been obtained from others and considered to be reliable; However, a purchaser or lessee is expected to verify all information to his/her own satisfaction.



LIGHTLE BECKNER ROBISON
INCORPORATED
COMMERCIAL REAL ESTATE SERVICES

www.TeamLBR.com

© Lightle Beckner Robison, Inc.
All Rights Reserved

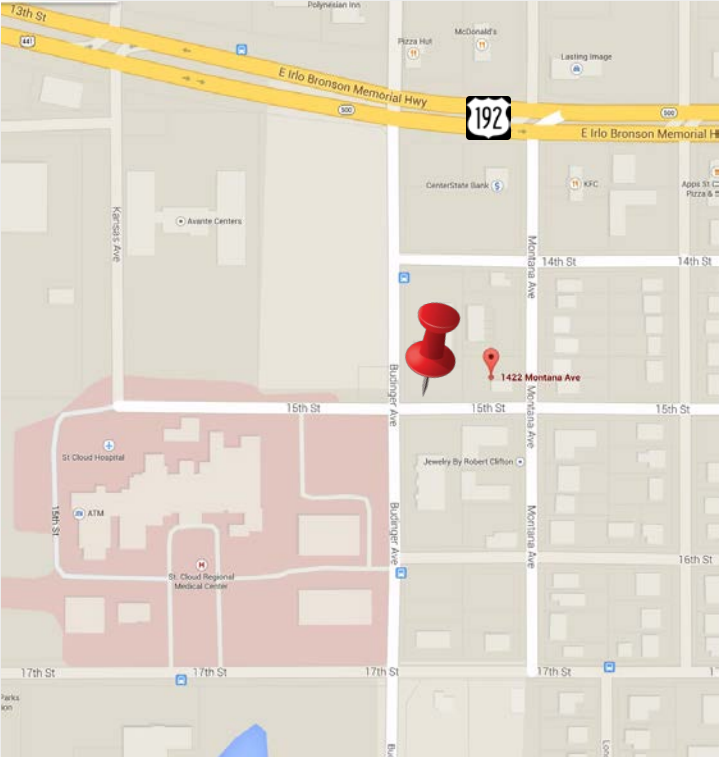
Rob Beckner, Principal
Medical and Office Properties

(321) 722-0707 x11
Rob@TeamLBR.com

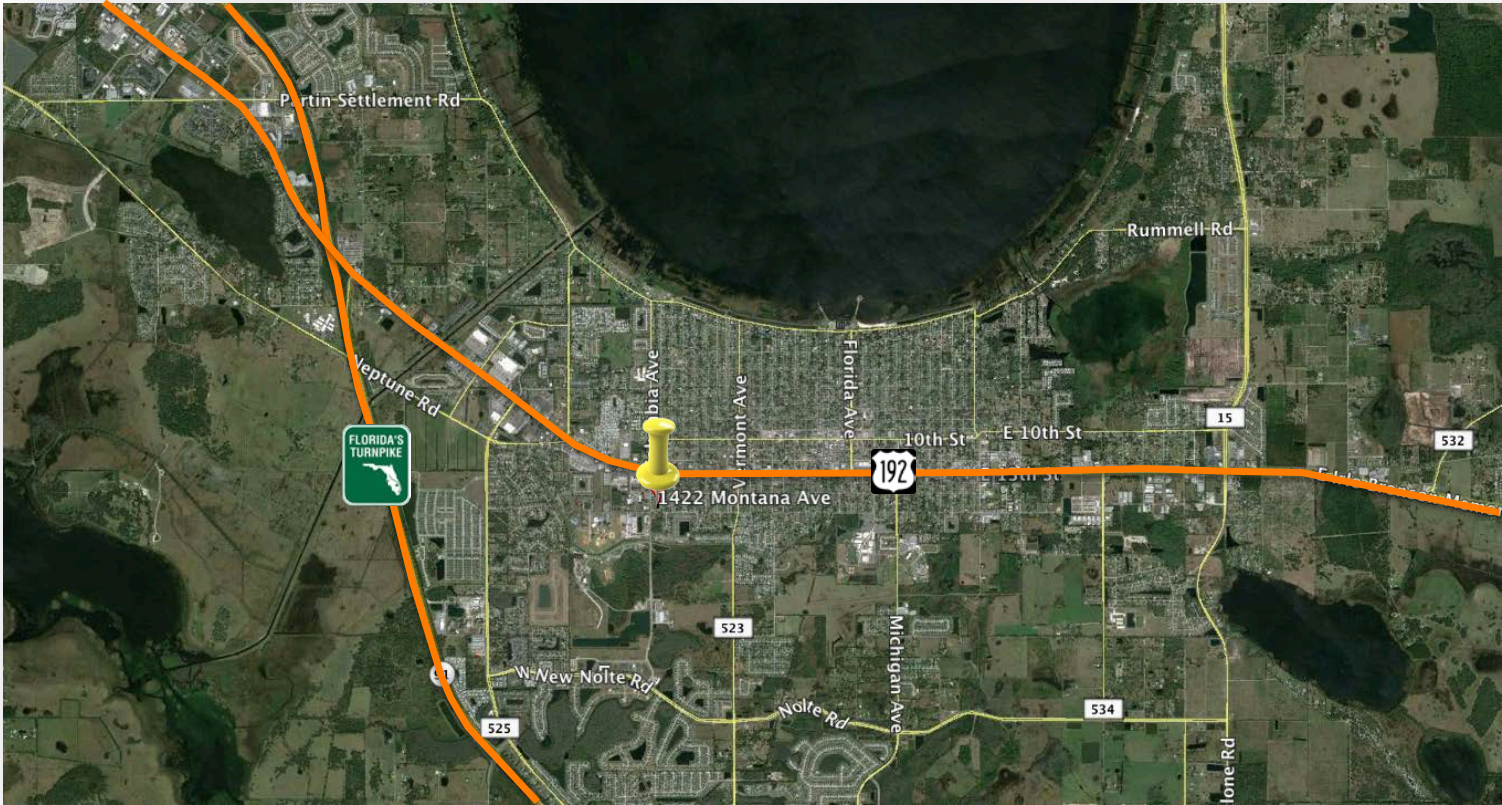
70 W. Hibiscus Blvd. · Melbourne, Florida 32901 · (321) 722-0581 fax

Information contained herein has been obtained from others and considered to be reliable; However, a purchaser or lessee is expected to verify all information to his/her own satisfaction.

NEC Budinger @ 15th St.
 St. Cloud, FL 34769



2014 DEMOGRAPHICS			
	1 mile	3 miles	5 miles
Population	8,801	37,786	67,672
Avg. HH Income	\$50,456	\$53,060	\$56,014
Median HH Income	\$43,119	\$44,369	\$45,314



LBR
LIGHTLE BECKNER ROBISON
 INCORPORATED
 COMMERCIAL REAL ESTATE SERVICES

www.TeamLBR.com

© Lightle Beckner Robison, Inc.
 All Rights Reserved

Rob Beckner, Principal
 Medical and Office Properties

(321) 722-0707 x11
Rob@TeamLBR.com

70 W. Hibiscus Blvd. · Melbourne, Florida 32901 · (321) 722-0581 fax

Information contained herein has been obtained from others and considered to be reliable; However, a purchaser or lessee is expected to verify all information to his/her own satisfaction.