

# SALE COMMERCIAL

1422 Montana Ave.  
St. Cloud, FL 34769

## PRICED LOW TO SELL!

### LAND:

.32± Acres

### BUILDING:

884± sf

### SALE PRICE

\$75,000<sup>00</sup>



2 bedroom / 2 bath House  
884± finished sf  
1,274± Gross sf

.32± Acres  
Commercially zoned  
Corner lot

## Freestanding Building

**Great opportunity for a start-up business!**

**Large fenced in yard on corner lot!**

**Parcel ID:** 01-26-30-0001-0262-0090

**County:** Osceola

**Frontage:** 100' Montana Avenue  
137.5' 15<sup>th</sup> Street

**Zoning:** P – Professional, City of St. Cloud

**Access:** Entrance off Montana Ave.

### LOCATION:

1422 Montana Ave., St. Cloud is located just 2 blocks south of a major east/west retail artery, US Hwy 192 (E Irlo Bronson Memorial Hwy)

One block from St. Cloud Regional Medical Center

### DISTANCES:

.1 mile US Hwy 192 (E Irlo Bronson Mem. Hwy)  
.2 mile St. Cloud Regional Memorial Hospital  
2.7 miles Florida Turnpike via Kissimme Park Rd.



LIGHTLE BECKNER ROBISON  
INCORPORATED  
COMMERCIAL REAL ESTATE SERVICES

[www.TeamLBR.com](http://www.TeamLBR.com)

© Lightle Beckner Robison, Inc.  
All Rights Reserved

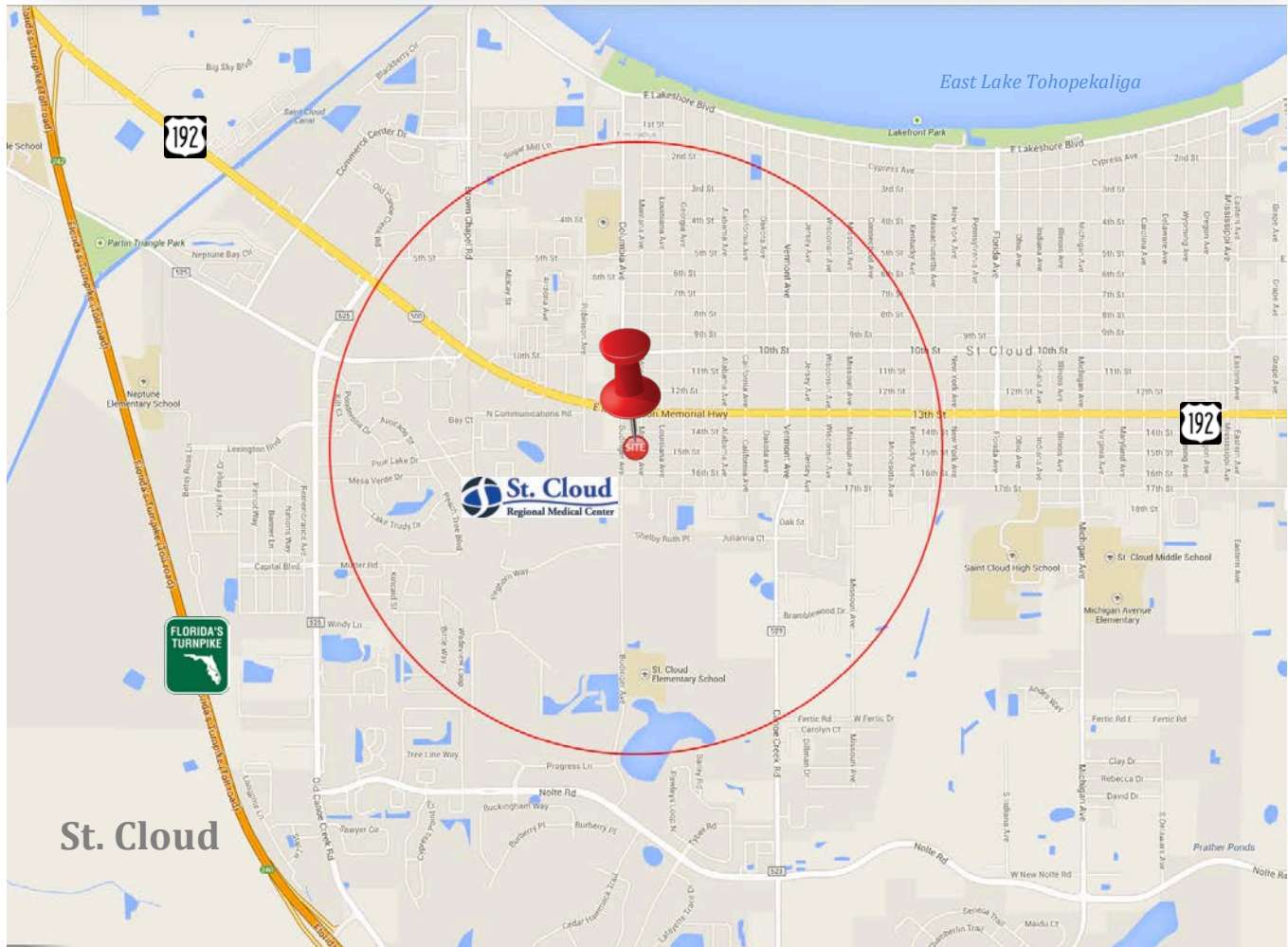
**Rob Beckner, Principal**  
Medical and Office Properties

**(321) 722-0707 x11**  
**Rob@TeamLBR.com**

70 W. Hibiscus Blvd. · Melbourne, Florida 32901 · (321) 722-0581 fax

Information contained herein has been obtained from others and considered to be reliable; However, a purchaser or lessee is expected to verify all information to his/her own satisfaction.

1422 Montana Ave.  
St. Cloud, FL 34769



LIGHTLE BECKNER ROBISON  
INCORPORATED  
COMMERCIAL REAL ESTATE SERVICES

[www.TeamLBR.com](http://www.TeamLBR.com)

© Lightle Beckner Robison, Inc.  
All Rights Reserved

**Rob Beckner, Principal**  
Medical and Office Properties

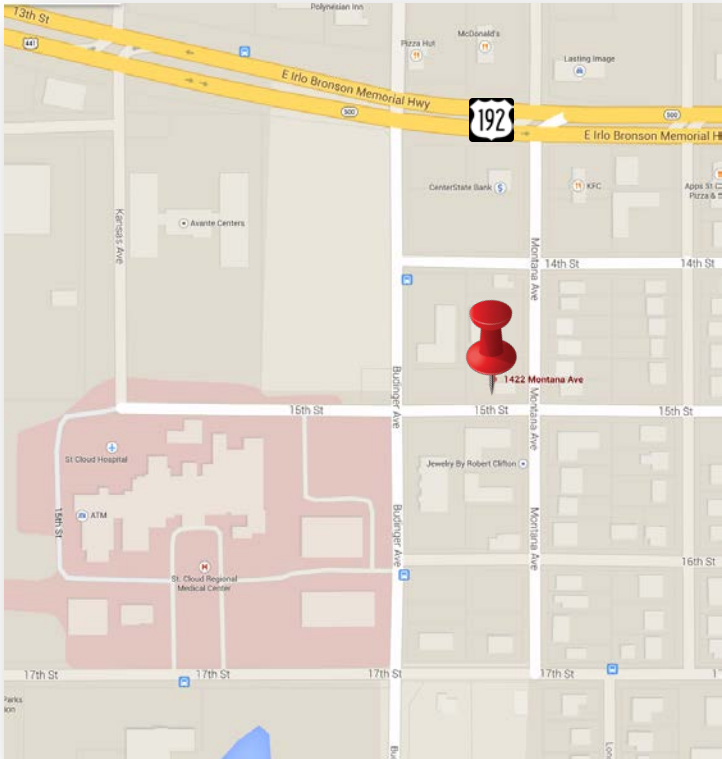
**(321) 722-0707 x11**  
**Rob@TeamLBR.com**

70 W. Hibiscus Blvd. · Melbourne, Florida 32901 · (321) 722-0581 fax

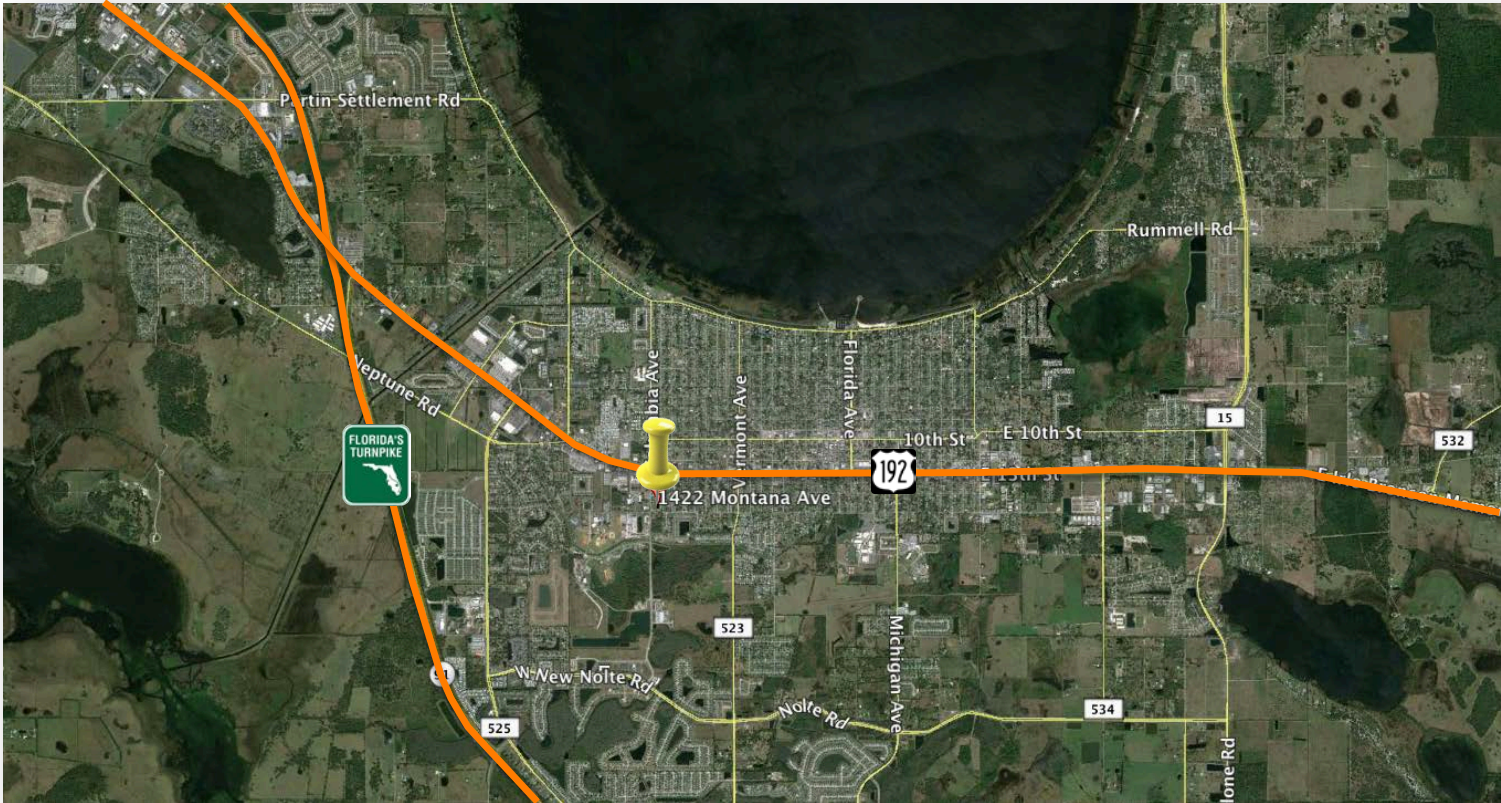
Information contained herein has been obtained from others and considered to be reliable;  
However, a purchaser or lessee is expected to verify all information to his/her own satisfaction.



1422 Montana Ave.  
St. Cloud, FL 34769



2014 DEMOGRAPHICS			
	1 mile	3 miles	5 miles
Population	8,801	37,786	67,672
Avg. HH Income	\$50,456	\$53,060	\$56,014
Median HH Income	\$43,119	\$44,369	\$45,314



**LIGHTLE BECKNER ROBISON**  
INCORPORATED  
COMMERCIAL REAL ESTATE SERVICES

[www.TeamLBR.com](http://www.TeamLBR.com)

© Lightle Beckner Robison, Inc.  
All Rights Reserved

**Rob Beckner, Principal**  
Medical and Office Properties

**(321) 722-0707 x11**

**Rob@TeamLBR.com**

70 W. Hibiscus Blvd. · Melbourne, Florida 32901 · (321) 722-0581 fax

*Information contained herein has been obtained from others and considered to be reliable; However, a purchaser or lessee is expected to verify all information to his/her own satisfaction.*