



Commercial
Real Estate FL

BANK OWNED! OFFICE CONDO

10 Florida Park Drive N, Suite D
Palm Coast, FL 32137

Property Summary

Property: 10 Florida Park Drive N
Suite D
Parcel No: 07-11-31-7001-000B0-014D
Status: For Sale
Size: 2,568 SF plus 750+/- SF finished Mezzanine

Price: **\$260,000**
Condo Fees \$418.66 per Month

Zoning: OFC-2

Year Built: 2004

Population (est.):	<u>1 MILE</u> 5,512	<u>3 MILES</u> 43,564	<u>5 MILES</u> 70,924
--------------------	------------------------	--------------------------	--------------------------

Average HHI (est.):	<u>1 MILE</u> \$53,870	<u>3 MILES</u> \$63,021	<u>5 MILES</u> \$61,902
---------------------	---------------------------	----------------------------	----------------------------

Traffic Count: 8,500 vehicles per day - Florida Park Drive

- Property Highlights:
- Currently operated as Executive Suites
 - Conference Room for use by suites
 - Tiled Entry
 - Two Restrooms and Break Room
 - Front and rear double loaded parking
 - Just north of Palm Coast Parkway and minutes to Beaches
 - Approximately 1.1 miles to Interstate 95



Rock Solid in Commercial Real Estate

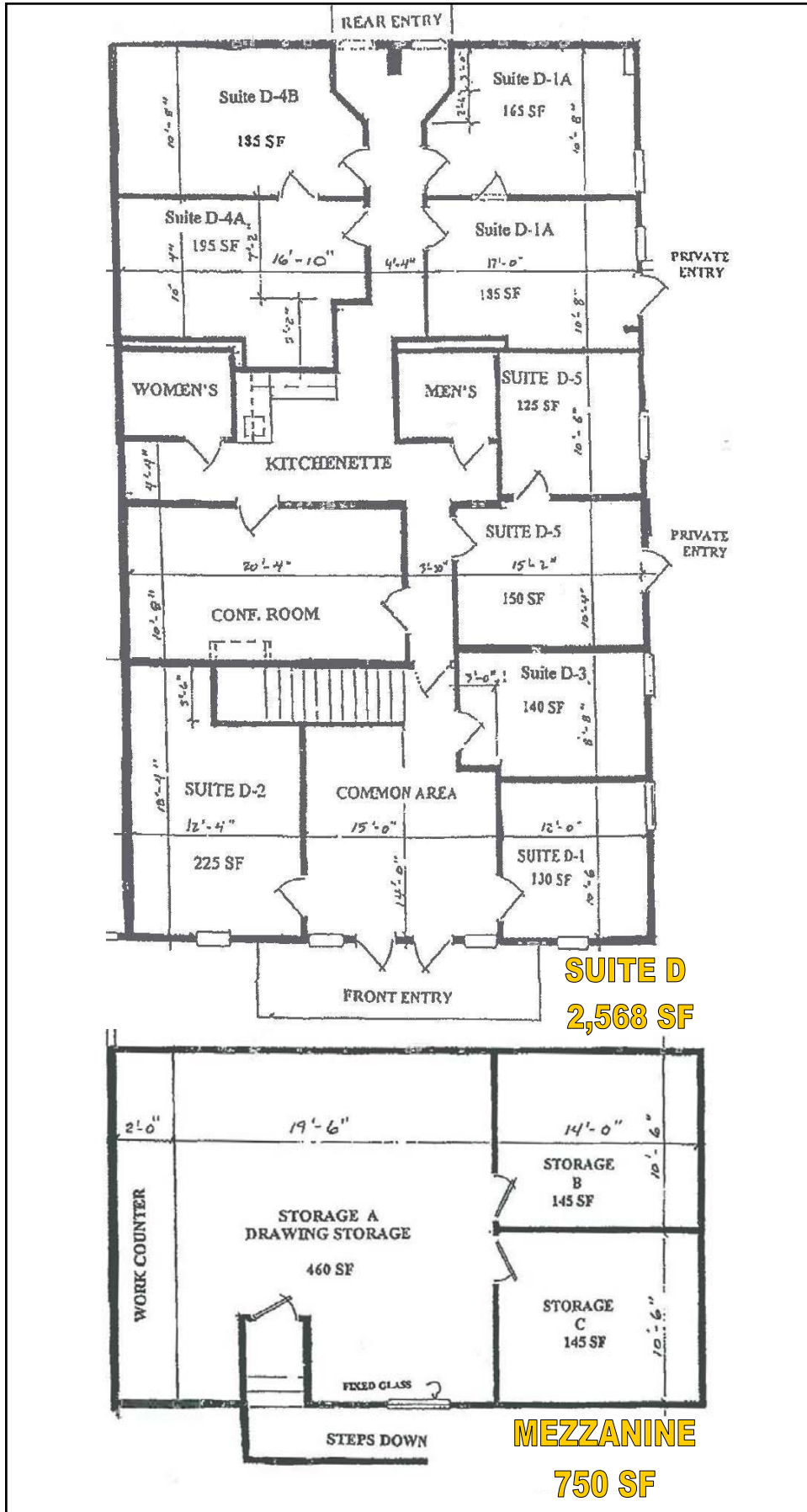
John W. Trost, PA, CCIM
(386) 253-8565 Ext.115 Office
(386) 295-5723 Mobile
JTROST@CCIM.NET

www.JohnTrost.com

Information contained herein is believed to be accurate, but not guaranteed and may change without notice.

FLOOR PLAN

PRUDENTIAL COMMERCIAL



ROCK SOLID IN COMMERCIAL REAL ESTATE

Information contained herein is believed to be accurate, but not guaranteed and may change without notice.

PICTURES

PRUDENTIAL COMMERCIAL



ROCK SOLID IN COMMERCIAL REAL ESTATE

Information contained herein is believed to be accurate, but not guaranteed and may change without notice.

©2012 BRER Affiliates Inc. An independently owned and operated broker member of BRER Affiliates Inc. Prudential, the Prudential logo, and the Rock symbol are service marks of Prudential Financial, Inc. and its related entities, registered in many jurisdictions worldwide. Used under license with no other affiliation with Prudential.

