

DAYTONA BEACH CHURCH/SCHOOL FOR SALE

1250 Beville Road
Daytona Beach, Florida 32114

Property Summary

Property: 1250 Beville Road
Parcel No: 5340-05-22-0090
Status: For Sale
Size: 24,956+/- SF Building on 5.08+/- Acres
Price: **\$1,800,000**

Year Built: 1980 and 1987

Zoning: MFR-20 Multifamily Residential

Population (est.):	<u>1 MILE</u> 8,573	<u>3 MILES</u> 60,309	<u>5 MILES</u> 121,485
--------------------	------------------------	--------------------------	---------------------------

Average HHI (est.):	<u>1 MILE</u> \$38,681	<u>3 MILES</u> \$42,690	<u>5 MILES</u> \$44,781
---------------------	---------------------------	----------------------------	----------------------------

Traffic Count: 33,000 vehicles per day - Beville Road (SR 400)

- Property Highlights:
- Total 24,956+/- SF
 - 5,753+/- SF Sanctuary with seating capacity for approximately 460
 - 7,560+/- SF Ten Classrooms/Offices, One Multipurpose Room, Kitchen, and Two Bathrooms
 - 7,323+/- SF Gym and 2,160+/- SF Kitchen, Storage, Mechanical, and Two Bathrooms with Showers
 - 2,160+/- SF second floor Classrooms
 - 125 parking spaces plus 6 ADA spaces
 - 5.08+/- acre corner site, potential room for expansion
 - 440+/- feet of frontage on Beville Road
 - Excellent access to Interstate 4 and Interstate 95, approximately 2.5 miles
 - Across the street from Sam's Club and Super Walmart
 - Redevelopment opportunity



Rock Solid in Commercial Real Estate

John W. Trost, PA, CCIM
(386) 253-8565 Ext.115 Office
(386) 295-5723 Mobile
JTROST@CCIM.NET

www.JohnTrost.com

Information contained herein is believed to be accurate, but not guaranteed and may change without notice.

PICTURES



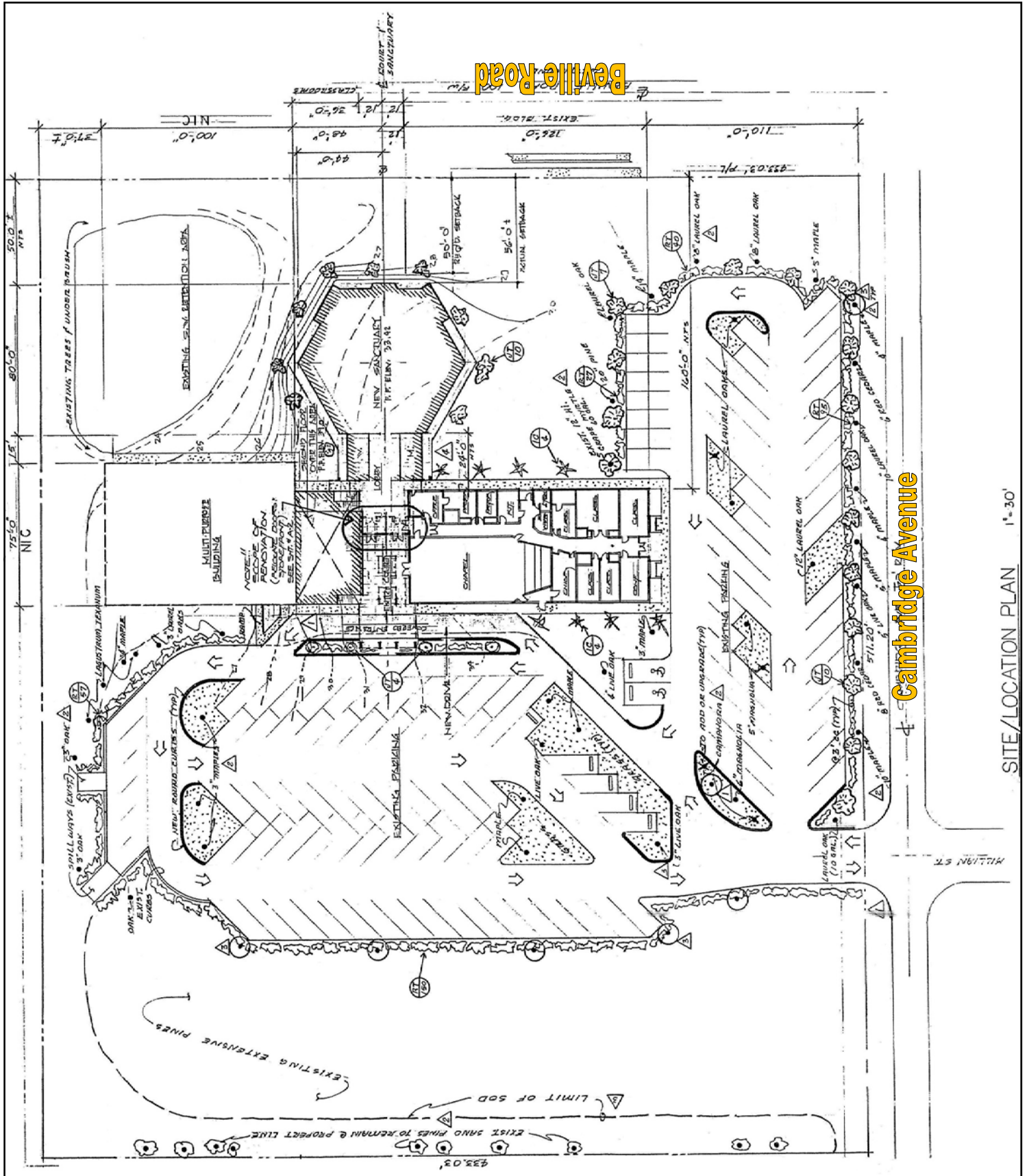
ROCK SOLID IN COMMERCIAL REAL ESTATE

Information contained herein is believed to be accurate, but not guaranteed and may change without notice.

PRUDENTIAL COMMERCIAL

SITE PLAN

PRUDENTIAL COMMERCIAL



ROCK SOLID IN COMMERCIAL REAL ESTATE

Information contained herein is believed to be accurate, but not guaranteed and may change without notice.

©2012 BRER Affiliates Inc. An independently owned and operated broker member of BRER Affiliates Inc. Prudential, the Prudential logo, and the Rock symbol are service marks of Prudential Financial, Inc. and its related entities, registered in many jurisdictions worldwide. Used under license with no other affiliation with Prudential.

SITE/LOCATION PLAN 1"=30'

