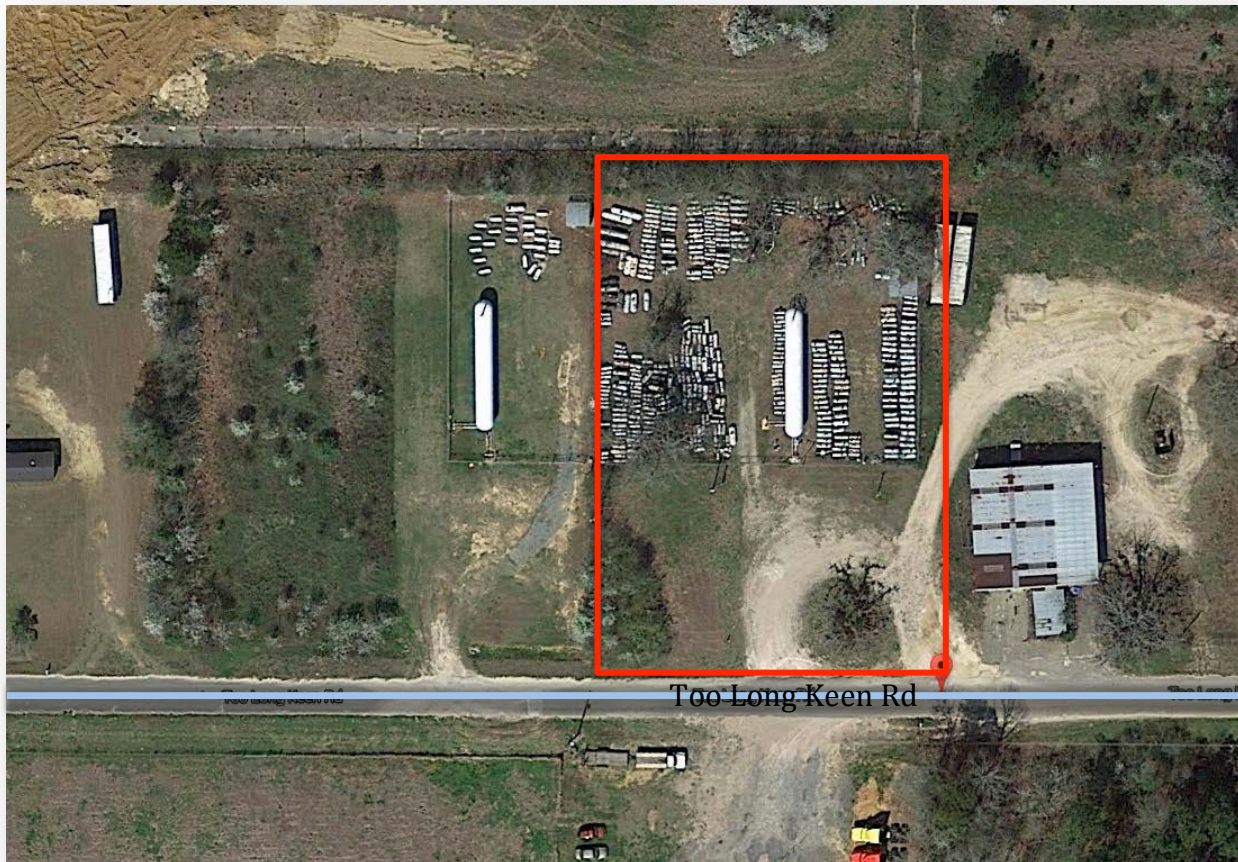


# INDUSTRIAL VACANT LAND

**.88± ACRE**  
**SALE PRICE: \$30,000**

**260 Too Long Keen Rd.**  
**Monticello, FL 32344**

**PARCEL:** 12-1N-4E-0000-006L-0000  
**USE DESC.:** Utilities (009100)  
**ZONED:** I/U – INDUSTRIAL  
**COUNTY:** Jefferson



Located west of Highway 19 (S. Jefferson)  
3.3 miles south of Hwy 90 (Washington St.)  
and 2 miles north of I-10  
South of Monticello



**LIGHTLE BECKNER ROBISON**  
INCORPORATED  
COMMERCIAL REAL ESTATE SERVICES

**Jeffery Robison**  
Principal | Broker

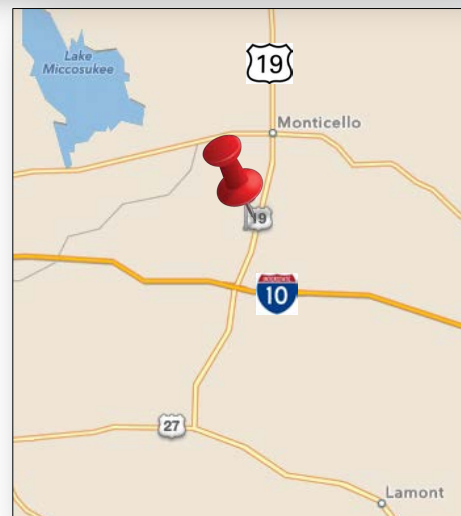
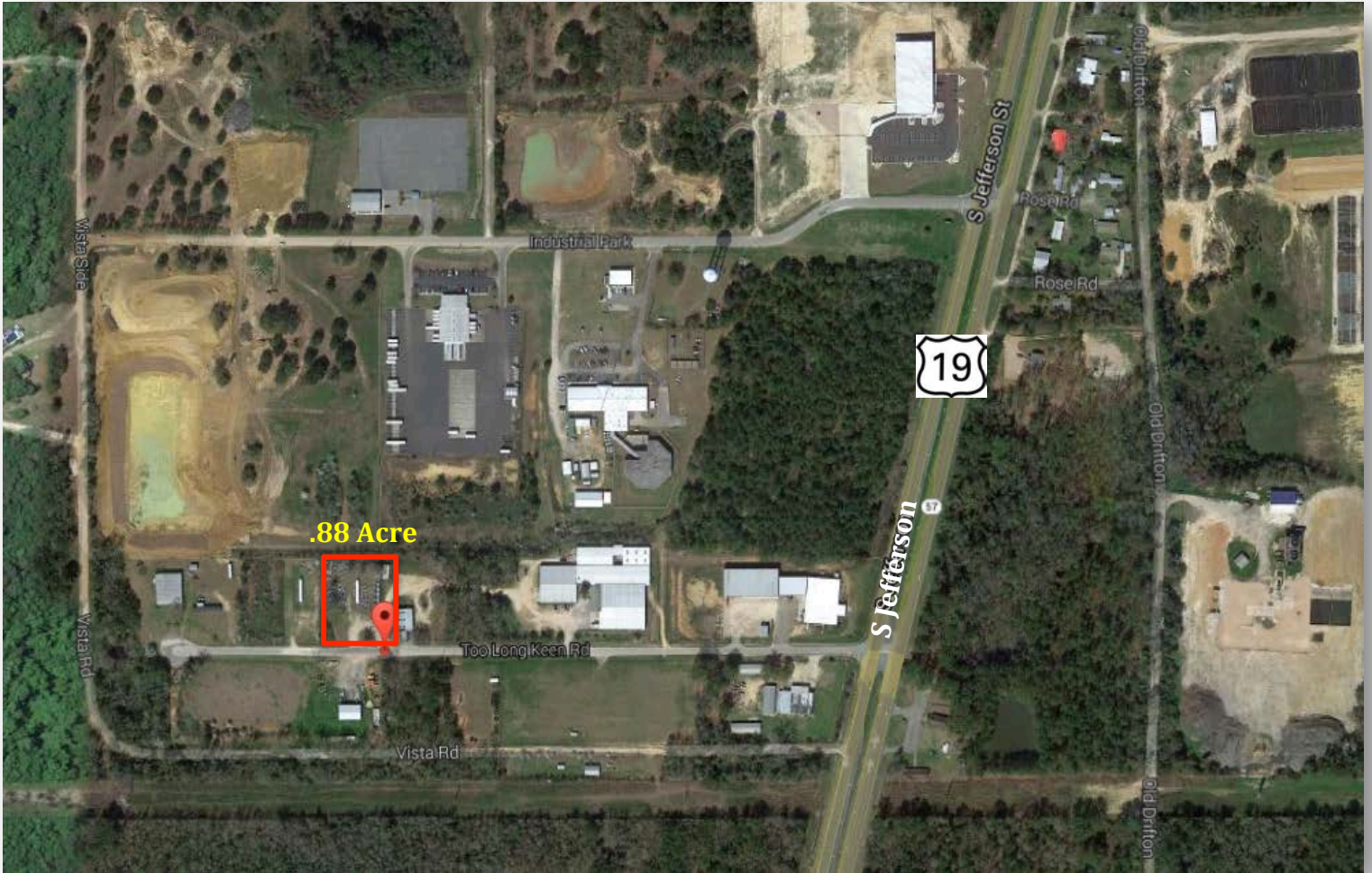
**(321) 722-0707 x13**  
**Jeff@TeamLBR.com**

[www.TeamLBR.com](http://www.TeamLBR.com)

© Lightle Beckner Robison, Inc.  
All Rights Reserved

70 W Hibiscus Blvd. · Melbourne, Florida 32901 · (321) 722-0581 fax  
Information contained herein has been obtained from others and considered to be reliable;  
However, a purchaser or lessee is expected to verify all information to his/her own satisfaction.

260 Too Long Keen Rd.  
Monticello, FL 32344



LIGHTLE BECKNER ROBISON  
INCORPORATED  
COMMERCIAL REAL ESTATE SERVICES

[www.TeamLBR.com](http://www.TeamLBR.com)

© Lightle Beckner Robison, Inc.  
All Rights Reserved

Jeffery Robison  
Principal | Broker

(321) 722-0707 x13

[Jeff@TeamLBR.com](mailto:Jeff@TeamLBR.com)

70 W Hibiscus Blvd. · Melbourne, Florida 32901 · (321) 722-0581 fax

Information contained herein has been obtained from others and considered to be reliable;  
However, a purchaser or lessee is expected to verify all information to his/her own satisfaction.