

15,315 SF Industrial Warehouse Building For Sale

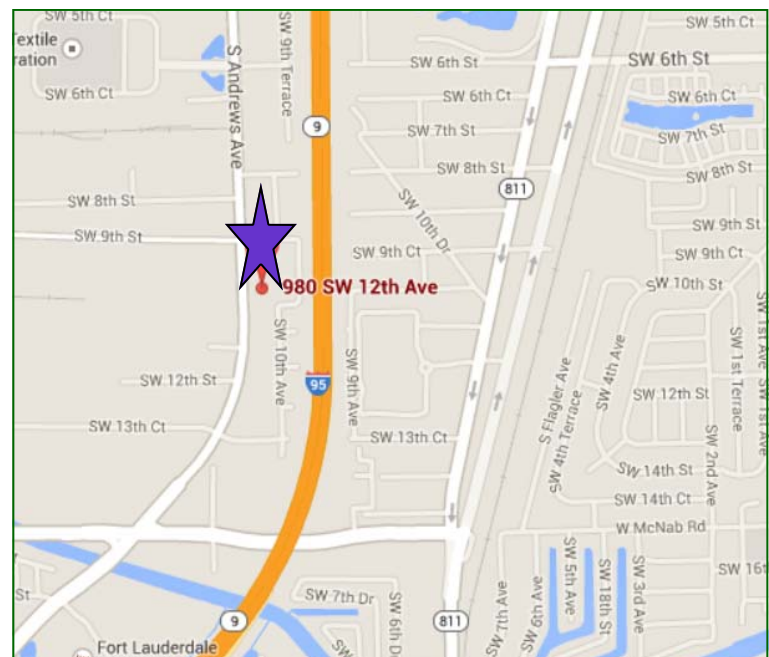
980 SW 12th Avenue (Andrews Avenue Frontage)

Pompano Beach, FL 33069



Property Highlights

- Prime Andrews Avenue Frontage
- +/- 1,000 SF Showroom
- Available for Sale at **\$95 PSF or \$1,454,925**
- Approximately 0.57 Acres of Land
- 18' Clear Ceiling Height
- Two (2) Front Loading Docks Doors
- Nine (9) Grade Level Doors
- 3 Phase Power
- Located Between Cypress Creek Road & Atlantic Av. with Easy Access to I-95 (3 Min)
- I-1 Zoning - General Industrial
- Folio # 4942-02-00-0570
- Year Built 1974



Property Photos



Brenner Real Estate Group: Fort Lauderdale
1500 West Cypress Creek Road, Suite 409 | Fort Lauderdale, FL 33309
Phone: 954.596.5555 | Fax: 954.596.5556

For additional information contact:

Kathleen Alberts, CCIM ~ Senior Vice President

954-596-5555 Office | 954.303.2826 Mobile | kalberts@breg.net

Helen Weissman, CCIM ~ Senior Vice President

954-596-5555 Office | 954.394.4807 Mobile | hweissman@breg.net



No warranty or representation, expressed or implied, is made as to the accuracy of the information contained herein, and same is submitted subject to errors, omissions, change of price, rental or other conditions, withdrawal without notice, and to any special conditions imposed by our principals.

Property Fact Sheet

980 SW 12th Avenue, Pompano Beach, FL 33069
Andrews Avenue Frontage

Building Specifications:

Demised Premises:	15,315 SF Including +/- 1,000 SF Office
Total SF Land:	24,796 SF (Approximately 0.57 AC)
Description:	Office/Warehouse Building Fronting Andrews Avenue (SW 12th Avenue). Easy Access to I-95 (3 Min)
Location:	980 SW 12th Avenue, Pompano Beach, FL 33069
Ceiling Height:	18' Clear in Warehouse
Loading:	Two (2) Dock Level Doors and Nine (9) Grade Level Doors
Power:	3 Phase Power
Availability:	Immediately
Zoning:	I-1 General Industrial, City of Pompano Beach, FL
Sales Price:	\$1,454,925 (\$95.00 PSF)
2013 RE Taxes:	\$15,342.19
Year Built:	1974
Roof:	Bar Joist Flat Style with Composition

Brenner Real Estate Group: Fort Lauderdale
1500 West Cypress Creek Road, Suite 409 | Fort Lauderdale, FL 33309
Phone: 954.596.5555 | Fax: 954.596.5556



For additional information contact:

Kathleen Alberts, CCIM ~ Senior Vice President

954-596-5555 Office | 954.303.2826 Mobile | kalberts@breg.net

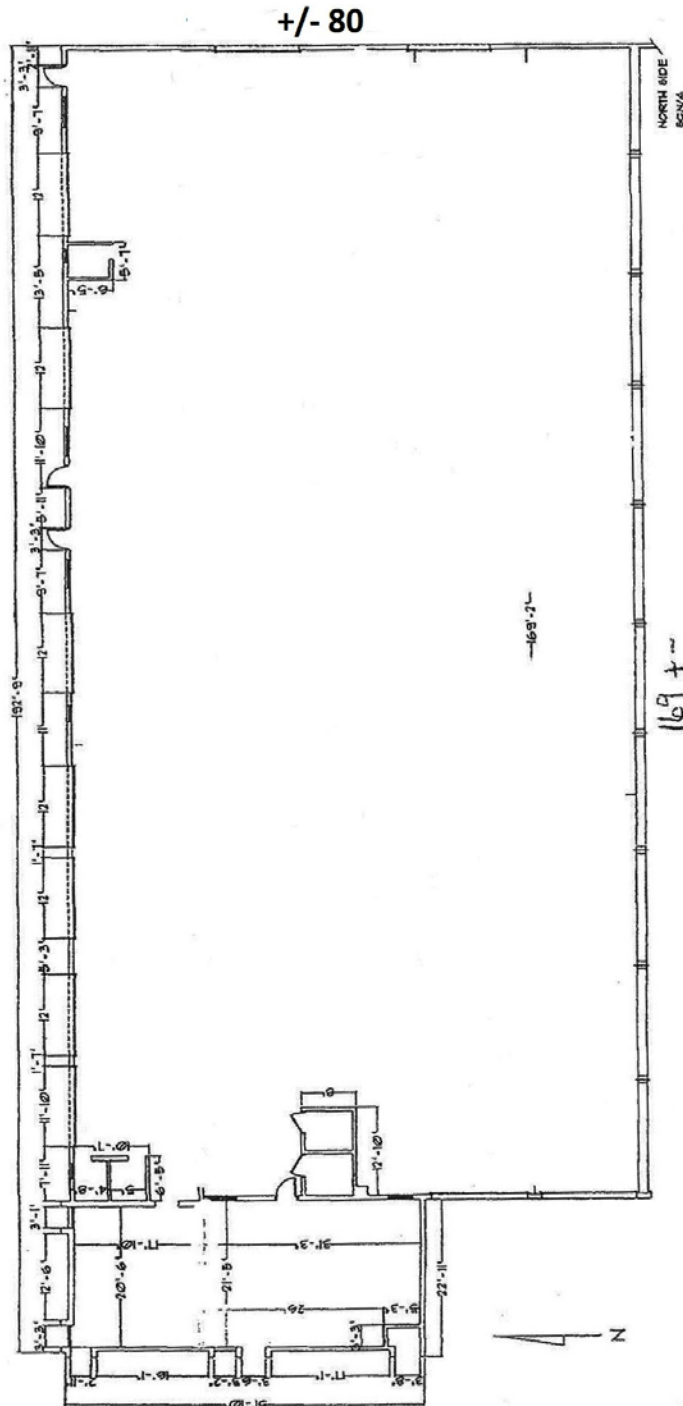
Helen Weissman, CCIM ~ Senior Vice President

954-596-5555 Office | 954.394.4807 Mobile | hweissman@breg.net

No warranty or representation, expressed or implied, is made as to the accuracy of the information contained herein, and same is submitted subject to errors, omissions, change of price, rental or other conditions, withdrawal without notice, and to any special conditions imposed by our principals.

Property Fact Sheet

980 SW 12th Avenue, Pompano Beach, FL 33069
Andrews Avenue Frontage



Brenner Real Estate Group: Fort Lauderdale
1500 West Cypress Creek Road, Suite 409 | Fort Lauderdale, FL 33309
Phone: 954.596.5555 | Fax: 954.596.5556

For additional information contact:

Kathleen Alberts, CCIM ~ Senior Vice President

954-596-5555 Office | 954.303.2826 Mobile | kalberts@breg.net

Helen Weissman, CCIM ~ Senior Vice President

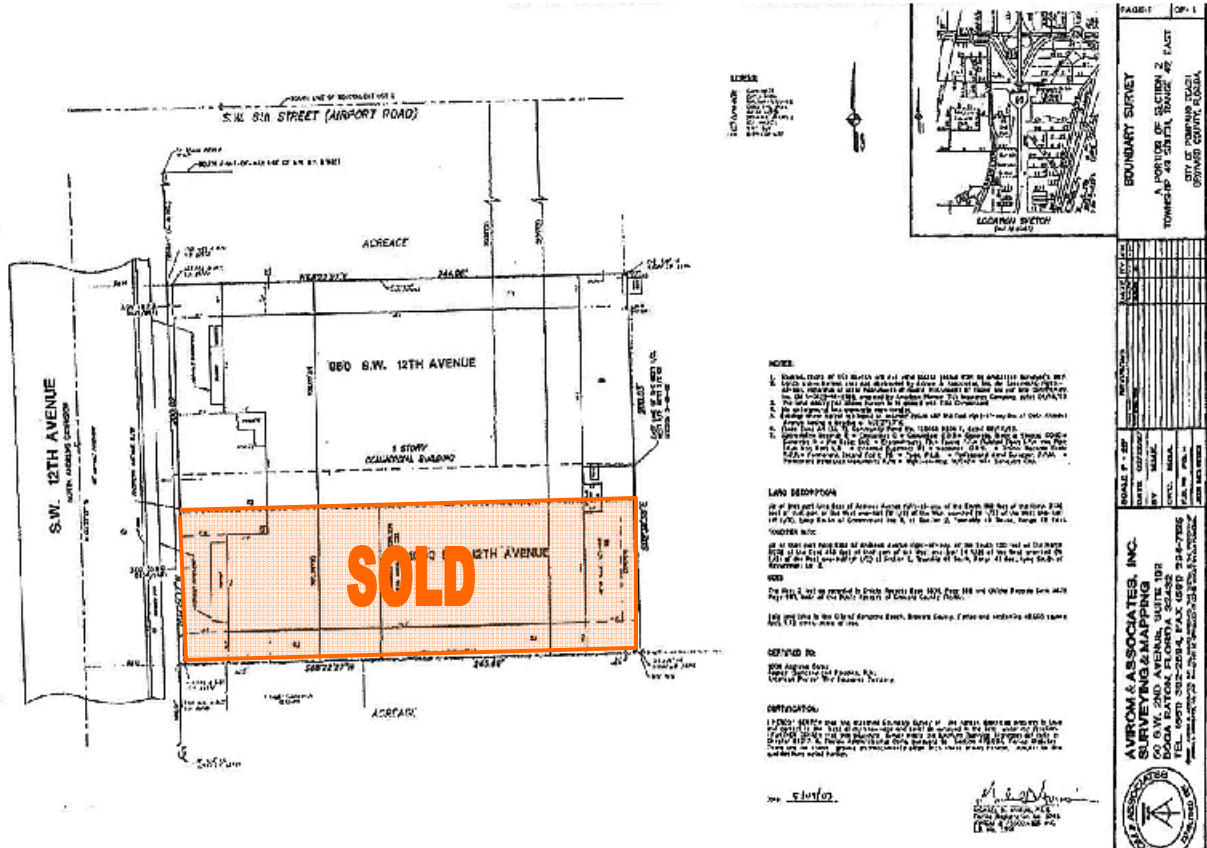
954-596-5555 Office | 954.394.4807 Mobile | hweissman@breg.net



No warranty or representation, expressed or implied, is made as to the accuracy of the information contained herein, and same is submitted subject to errors, omissions, change of price, rental or other conditions, withdrawal without notice, and to any special conditions imposed by our principals.

Property Fact Sheet

980 SW 12th Avenue, Pompano Beach, FL 33069



Brenner Real Estate Group: Fort Lauderdale
 1500 West Cypress Creek Road, Suite 409 | Fort Lauderdale, FL 33309
 Phone: 954.596.5555 | Fax: 954.596.5556



For additional information contact:

Kathleen Alberts, CCIM ~ Senior Vice President
 954-596-5555 Office | 954.303.2826 Mobile | kalberts@breg.net

Helen Weissman, CCIM ~ Senior Vice President
 954-596-5555 Office | 954.394.4807 Mobile | hweissman@breg.net

No warranty or representation, expressed or implied, is made as to the accuracy of the information contained herein, and same is submitted subject to errors, omissions, change of price, rental or other conditions, withdrawal without notice, and to any special conditions imposed by our principals.