

Upgraded Office with Warehouse For Sale

4700 West Prospect Road, Suite 115, Fort Lauderdale, FL 33309



Property Highlights

- 2,533 SF Flex Condo Space Located in Oaktree Plaza
- 1,983 SF of Office and 550 SF of Warehouse
- Upscale Finishes; High Ceilings, Ceramic Tile Throughout, Glass Pane Doors
- Hurricane Shutters
- Two Overhead doors
- Centrally Located Between I-95 & Florida's Turnpike, South of Commercial Blvd.
- Ample Parking
- Price Reduced from \$259,900 to \$249,000
- Condo Fee \$784.00 per Month
- Real Estate Taxes \$4,386.00 Per Year



Call Us For More Information:

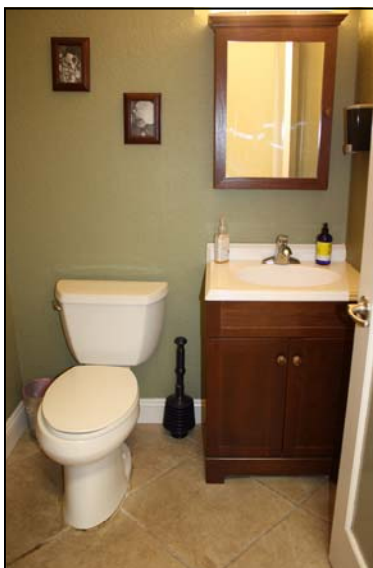
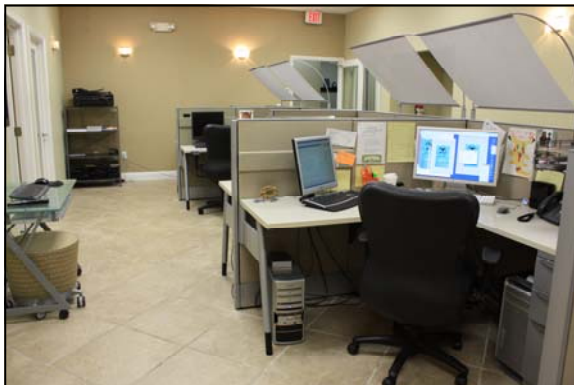
Brenner Real Estate Group: Fort Lauderdale
1500 W. Cypress Creek Road, Suite 409 | Fort Lauderdale, FL 33309
Phone: 954.596.5555 | Fax: 954.596.5556

Ken Silberling ~ Vice President Business Development
Email: ksilberling@breg.net ~ Phone: 954-596-5540 Office | Cell: 561-245-0295



Betty Geller ~ Commercial Associate
Email: bgeller@breg.net ~ Phone: 954-596-5529 Office | Cell: 305-469-5472

**4700 West Prospect Road
Fort Lauderdale, FL 33309**



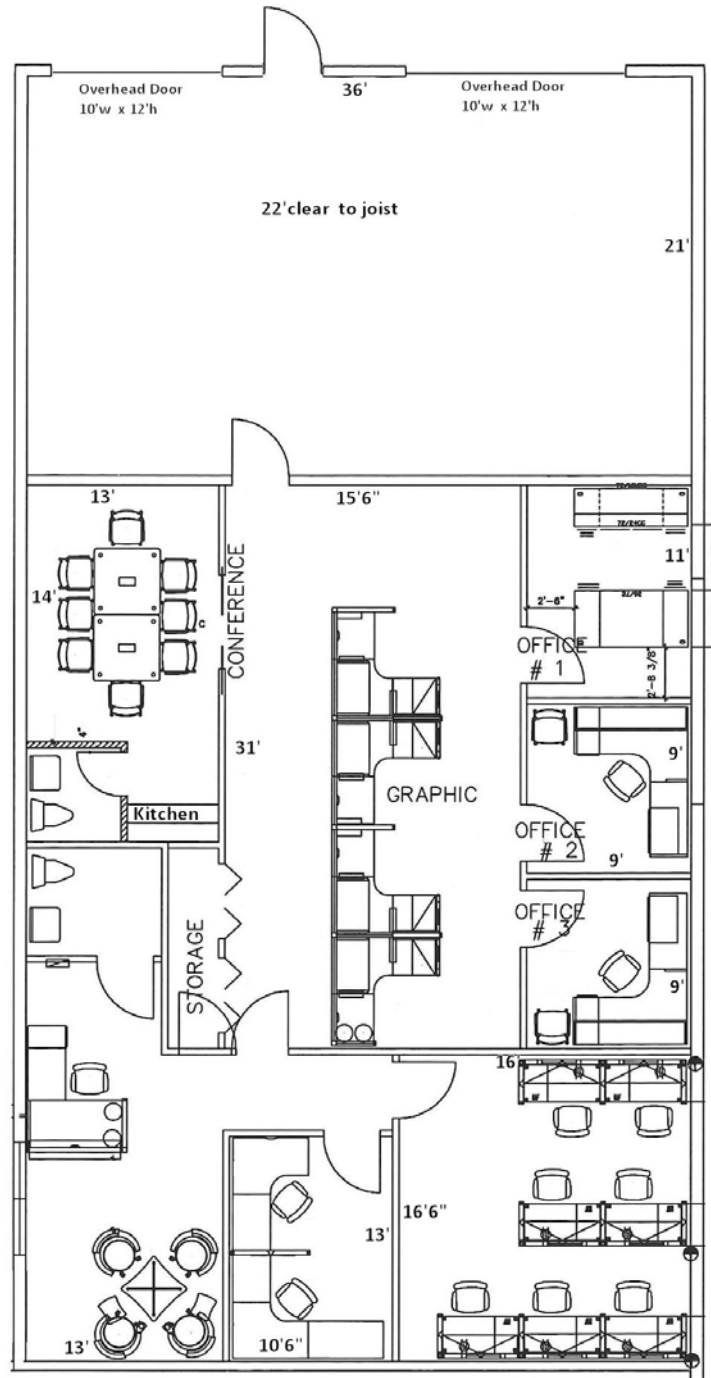
Brenner Real Estate Group: Fort Lauderdale
1500 W. Cypress Creek Road, Suite 409 | Fort Lauderdale, FL 33309
Phone: 954.596.5555 | Fax: 954.596.5556

Ken Silberling ~ Vice President Business Development
Email: ksilberling@breg.net ~ Phone: 954-596-5540 Office | Cell: 561-245-0295

Betty Geller ~ Commercial Associate
Email: bgeller@breg.net ~ Phone: 954-596-5529 Office | Cell: 305-469-5472

No warranty or representation, expressed or implied, is made as to the accuracy of the information contained herein, and same is submitted subject to errors, omissions, change of price, rental or other conditions, withdrawal without notice, and to any special conditions imposed by our principals.

4700 West Prospect Road
 Fort Lauderdale, FL 33309



Brenner Real Estate Group: Fort Lauderdale
 1500 W. Cypress Creek Road, Suite 409 | Fort Lauderdale, FL 33309
 Phone: 954.596.5555 | Fax: 954.596.5556

Ken Silberling ~ Vice President Business Development
 Email: ksilberling@breg.net ~ Phone: 954-596-5540 Office | Cell: 561-245-0295

Betty Geller ~ Commercial Associate
 Email: bgeller@breg.net ~ Phone: 954-596-5529 Office | Cell: 305-469-5472