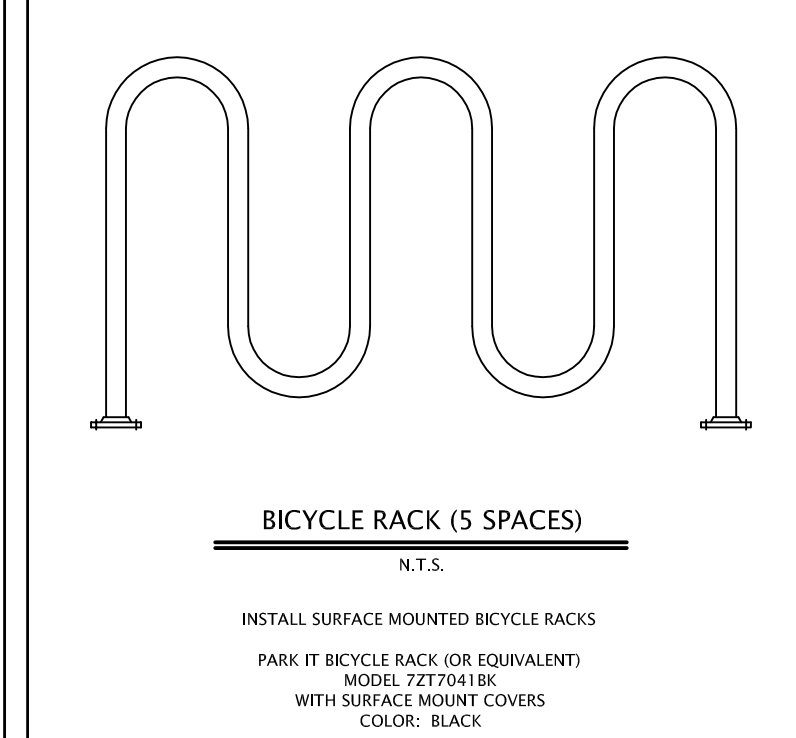


R = 3725.72' (DEED & F.M.)
A = 198.90'
DELTA = 3°03'31\"/>

EASEMENT AGREEMENT O.R.B. 610, PAGE 580 NOT PLOTTABLE

BUILDING DATA TABLE:
PROPOSED BUILDING FOOTPRINT: 11,884 SF
PROPOSED UNITS/BUILDING: 16
TOTAL PROPOSED BUILDING FOOTPRINT AREA: 71,304 SF



PARKING LIGHT FIXTURES:
WLS-FVM-3-250-NW - 8 EA
LIGHT POLES:
20\"/>

WLS LIGHTING SYSTEMS

FV SERIES
VERTICAL LAMP / FLAT GLASS LENS
SPECIFICATIONS:
- 150W
- 120V
- 1200LM
- 1200LM

SNTS11 SERIES
SPECIFICATIONS:
- 150W
- 120V
- 1200LM
- 1200LM

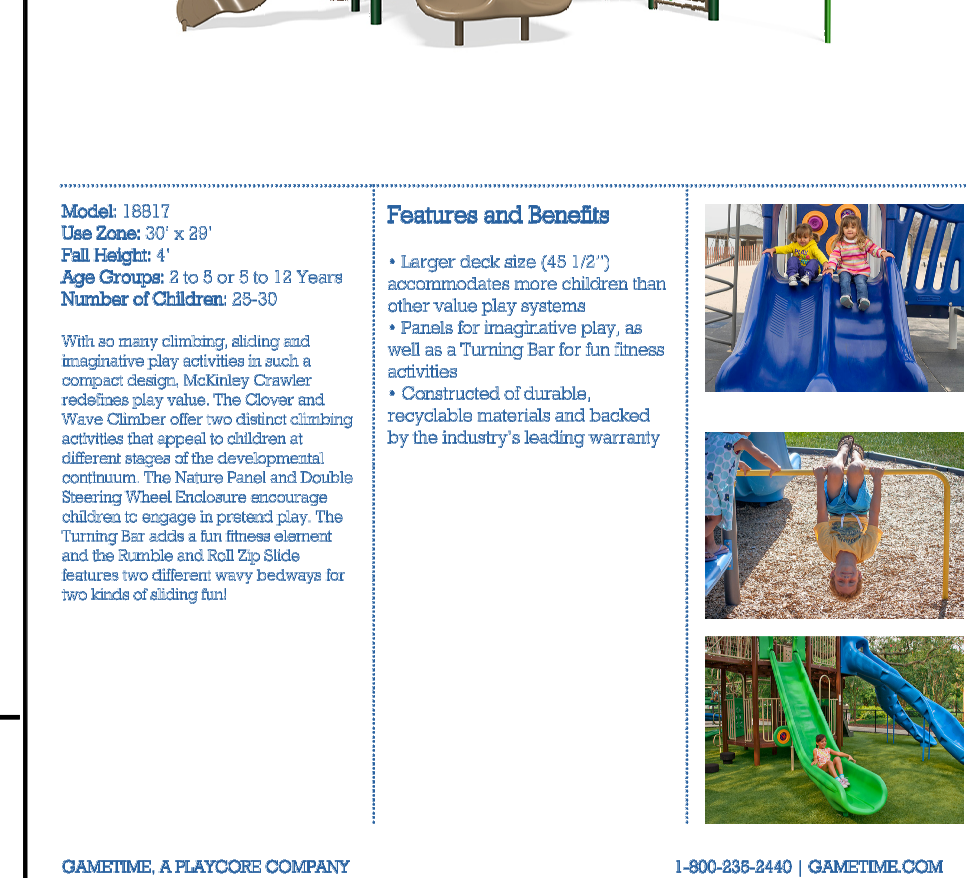
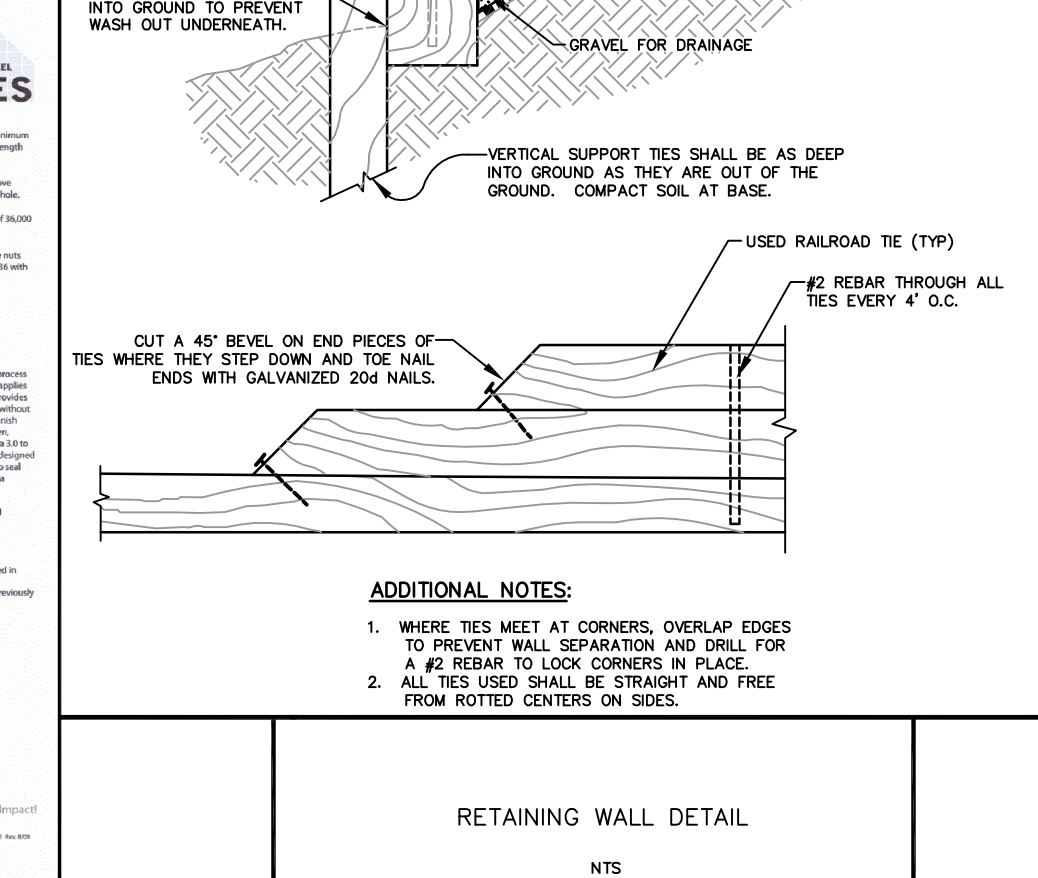
RETAINING WALL DETAIL

1. WHERE TIES MEET AT CORNERS, OVERLAP EDGES TO PREVENT WALL SEPARATION AND DRILL FOR A #2 REBAR TO LOCK CORNERS IN PLACE.
2. ALL TIES USED SHALL BE STRAIGHT AND FREE FROM ROTTED CENTERS ON SIDES.

GameTime MCKINLEY CRAWLER

Model: 18817
Use Zone: 30' x 80'
Full Height: 4'
Age Group: 5 to 8 or 8 to 12 Years
Number of Children: 25-30

Feature and Benefits:
• Larger deck area (45 1/2') accommodates more children than other value play systems
• Panels for imaginative play, as well as a turning bar for fun stunts activities
• Constructed of durable, recyclable materials and backed by the industry's leading warranty



FOOTINGS TABLE

TYPE	DIAMETER/SIDE	DEPTH*	QTY.
A	11\"/>		
B	11\"/>		

*DEPTH IS MEASURED FROM FINISHED GRADE

NOTE: ON NON-LETTERED HOLES, TO ENSURE CONCRETE REQUIREMENTS PLEASE REFER TO EACH COMPONENT'S INSTALLATION SHEETS.

NO.	DATE	REVISION	BY
1	10/29/14	PER COPC/SRWMD COMMENTS	MRZ

DESIGNER	DATE	SCALE
MRZ	5/15/14	1\"/>