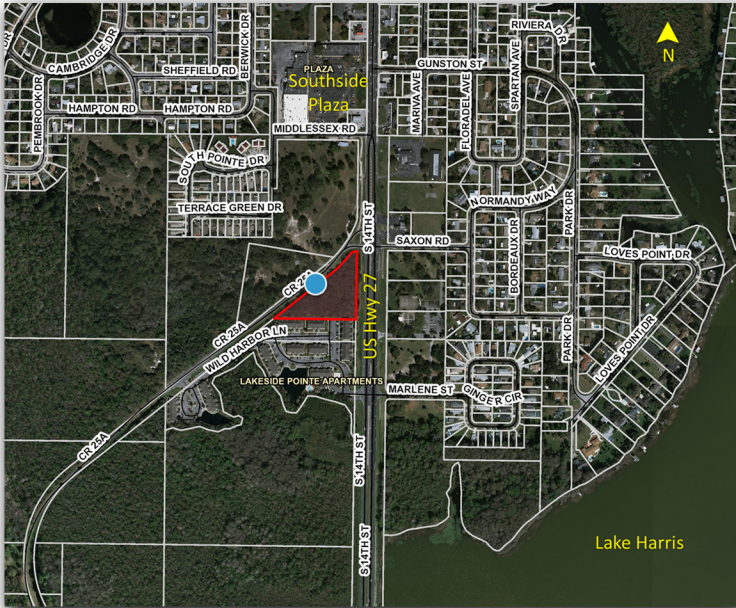


2.77± Acre Commercial Corner SWC US Hwy 27 & CR 25A, Leesburg, FL

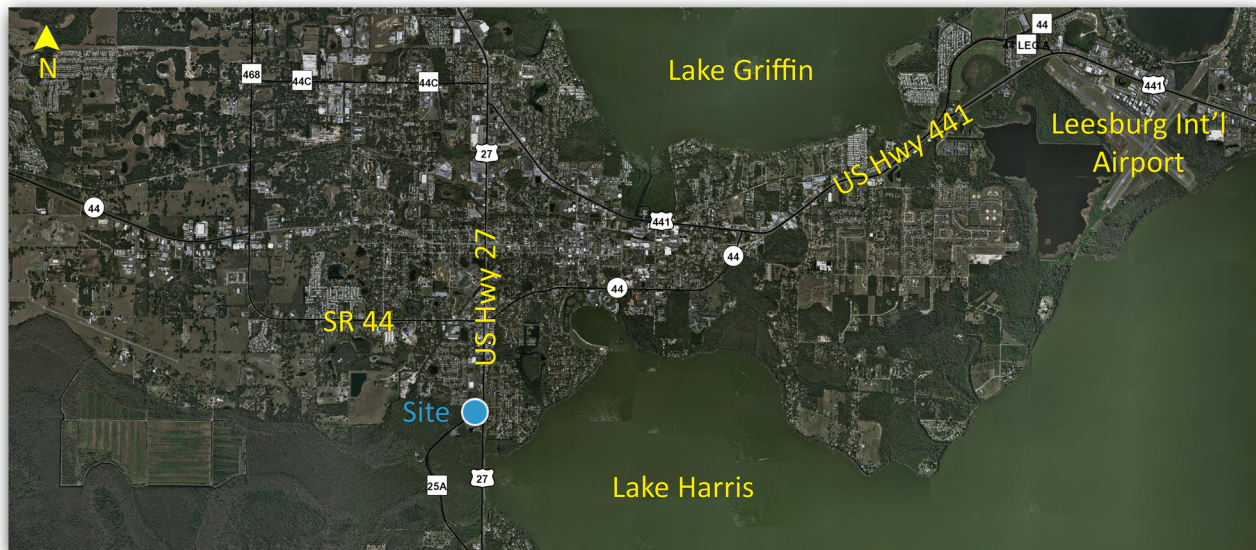
Vacant Land



Property Details

- 2.77± acres
- Zoned C-3, Highway Commercial
- Southwest corner of US Hwy 27 & CR 25A in Leesburg, Lake County, FL
- 26,500 ADT
- Parcel ID:34-19-24-000100002101
- Utilities available
- 2014 RE Taxes: \$4,618

Bank owned. \$210,000



Contact Information

Paul Hoffman
paul.hoffman@cbcworldwide.com
Phone: (407) 571-5556



NRT

All information contained herein has been obtained from sources deemed reliable. However, no warranty or guarantee is made as to the accuracy of the information. CBC NRT is agent for Seller.

www.cbcworldwide.com

901 N Lake Destiny Drive, Suite 110
Maitland, Florida 32751
(407) 539-1000

Coldwell Banker Commercial and the Coldwell Banker Commercial Logo are registered service marks owned by Coldwell Banker Real Estate LLC. Each office is Independently Owned and Operated.