

DENTAL OFFICE BUILDING FOR SALE

DENTAL OFFICE BUILDING

523 E. New Haven Ave. | Melbourne, FL 32901

REDUCED TO

\$299,000

BUILDING:

1,787± sf

LAND:

.256± Acre



Highly Desirable Downtown Melbourne Redevelopment District!

- 93' on New Haven, 120' deep lot
- Nine parking spaces
- Additional street parking on New Haven
- Well maintained property
- Concrete block construction
- Nice landscaping
- Central downtown location
- Zoned C-3, City of Melbourne

This freestanding dental office building on New Haven Avenue is located in the center of Downtown Melbourne and is a rare opportunity in this bustling corridor.

Located on the E. New Haven Ave. midway between US 1 and Babcock Street
.6 miles east to US1
.6 miles west to Babcock St.
2.5 miles to Indialantic via US 192
2 miles to Melbourne International Airport

Rev. 1/14/2015



INCORPORATED

COMMERCIAL REAL ESTATE SERVICES

www.TeamLBR.com

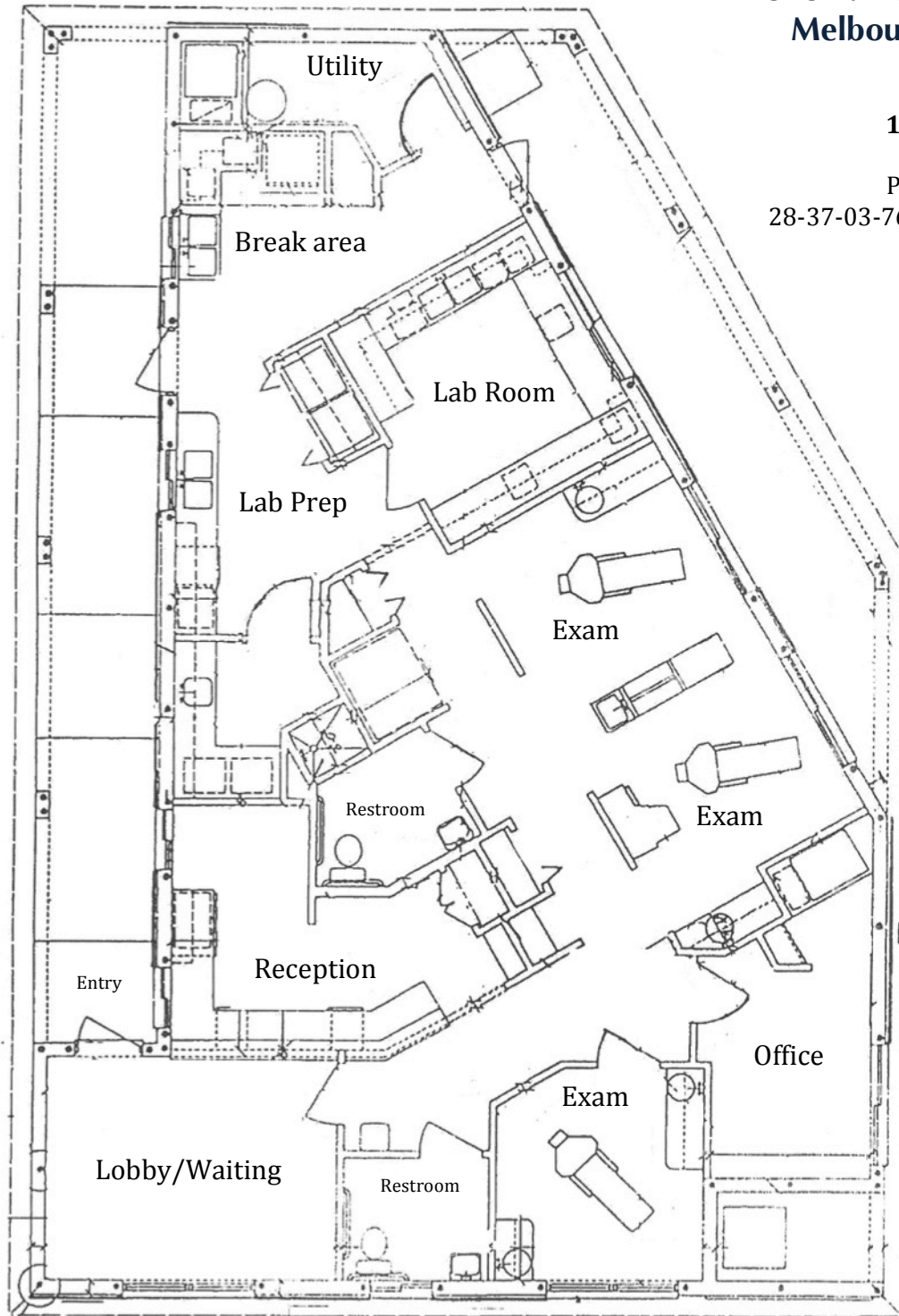
© Lightle Beckner Robison, Inc.
All Rights Reserved

Brian L. Lightle, CCIM, SIOR
(321) 722-0707 x14
Brian@TeamLBR.com

70 W. Hibiscus Blvd. · Melbourne, Florida 32901 · (321) 722-0581 fax

Information contained herein has been obtained from others and considered to be reliable;
However, a purchaser or lessee is expected to verify all information to his/her own satisfaction.

523 E. New Haven Ave.
Melbourne, FL 32901



1,787± sf

Parcel ID:
28-37-03-76-00001.0-0012.00

E. NEW HAVEN AVENUE



www.TeamLBR.com

© Lightle Beckner Robison, Inc.
All Rights Reserved

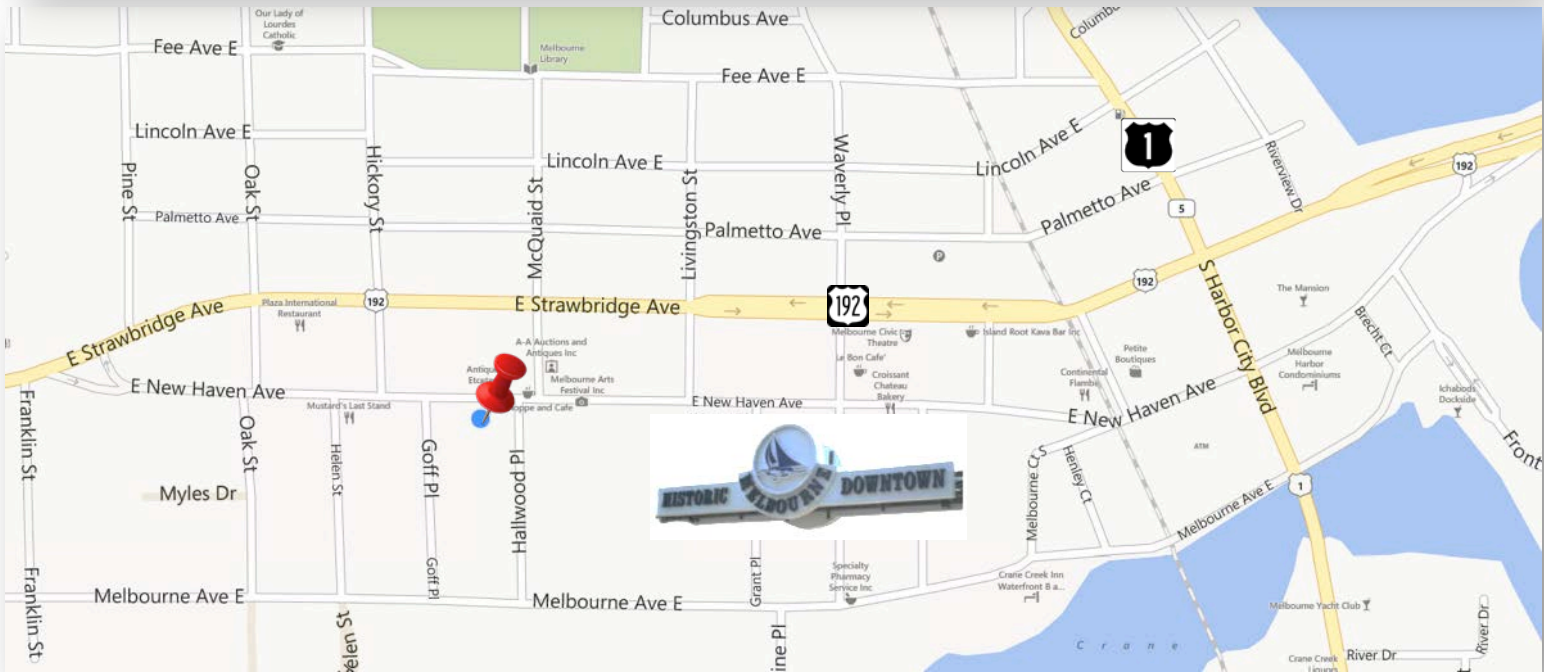
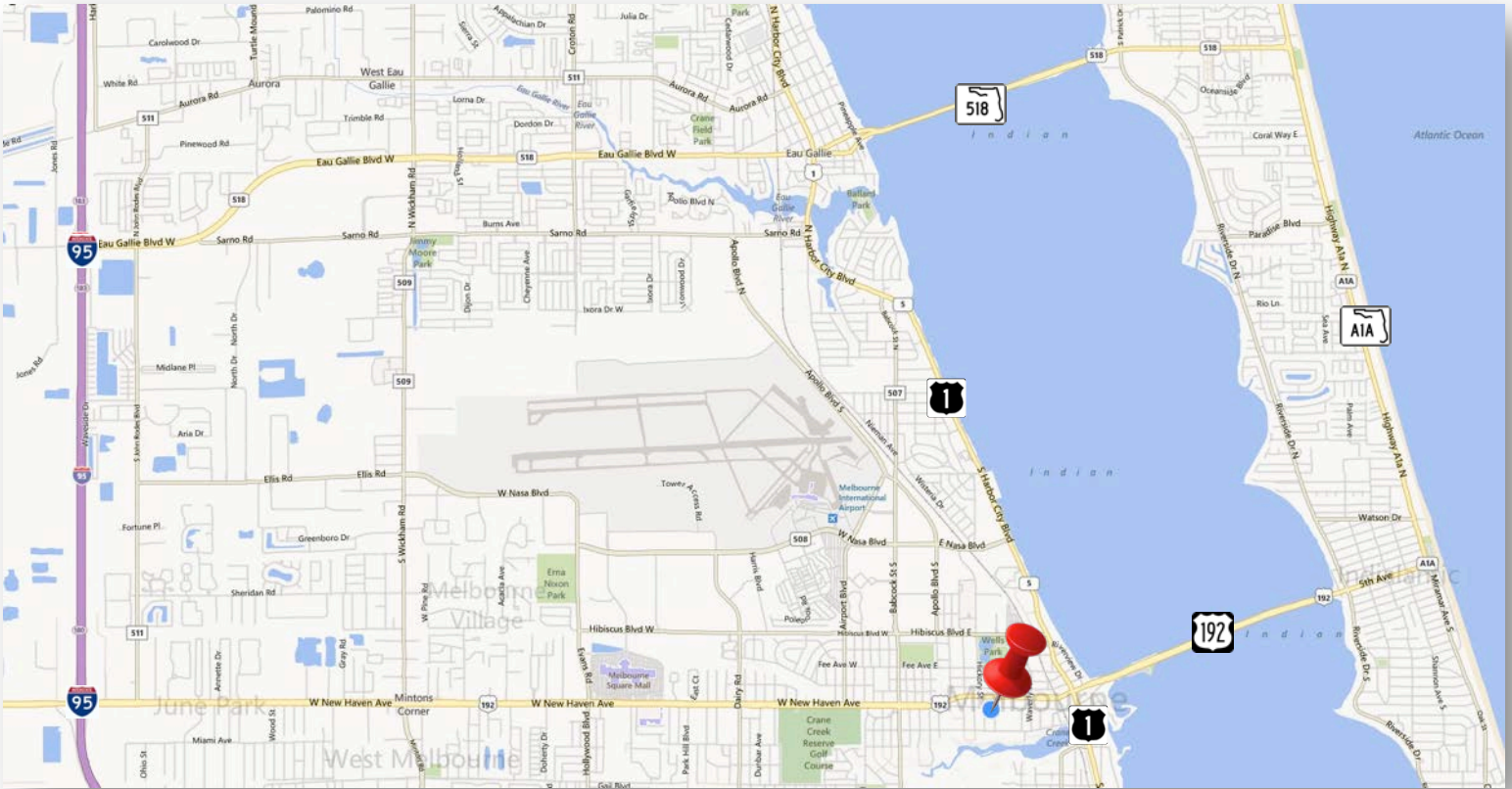
Brian L. Lightle, CCIM, SIOR
(321) 722-0707 x14
Brian@TeamLBR.com

70 W. Hibiscus Blvd. · Melbourne, Florida 32901 · (321) 722-0581 fax

Information contained herein has been obtained from others and considered to be reliable;
However, a purchaser or lessee is expected to verify all information to his/her own satisfaction.

DENTAL OFFICE BUILDING

523 E. New Haven Ave. | Melbourne, FL 32901



**LIGHTLE
BECKNER
ROBISON**

INCORPORATED

COMMERCIAL REAL ESTATE SERVICES

www.TeamLBR.com

© Lightle Beckner Robison, Inc.
All Rights Reserved

Brian L. Lightle, CCIM, SIOR
(321) 722-0707 x14
Brian@TeamLBR.com

70 W. Hibiscus Blvd. · Melbourne, Florida 32901 · (321) 722-0581 fax

Information contained herein has been obtained from others and considered to be reliable;
However, a purchaser or lessee is expected to verify all information to his/her own satisfaction.

523 E. New Haven Ave.
Melbourne, FL 32901



www.TeamLBR.com

© Lightle Beckner Robison, Inc.
All Rights Reserved

Brian L. Lightle, CCIM, SIOR
(321) 722-0707 x14
Brian@TeamLBR.com

70 W. Hibiscus Blvd. · Melbourne, Florida 32901 · (321) 722-0581 fax

Information contained herein has been obtained from others and considered to be reliable;
However, a purchaser or lessee is expected to verify all information to his/her own satisfaction.