

# HWY 561 & HWY 455

10± acres

Lake County, FL



## LOCATION

The property is located on the east side of Highway 561 approximately 400 ft ± south of Highway 455.

## SIZE

10± acres

## PRICE

\$150,000 or \$15,000 per acre

## ZONING

Agricultural/ Future Land Use is Rural

## ROAD FRONTAGE

569' ± on County Highway 561

## DESCRIPTION

Zoned Agricultural. Fast growing area near the busy intersection of County Hwy 455. Located on the east side of Hwy 561, approximately 400 ft ± south of Hwy 455.

Offering subject to errors, omission, prior sale or withdrawal without notice.

LAND FOR SALE

— Commercial Real Estate Investments | Management | Brokerage | Development | Land

Maury L. Carter & Associates, Inc.  
407-422-3144 | [www.maurycarter.com](http://www.maurycarter.com)



# HWY 561 & HWY 455

10± acres

Lake County, FL



PROPERTY MAP

— Commercial Real Estate Investments | Management | Brokerage | Development | Land

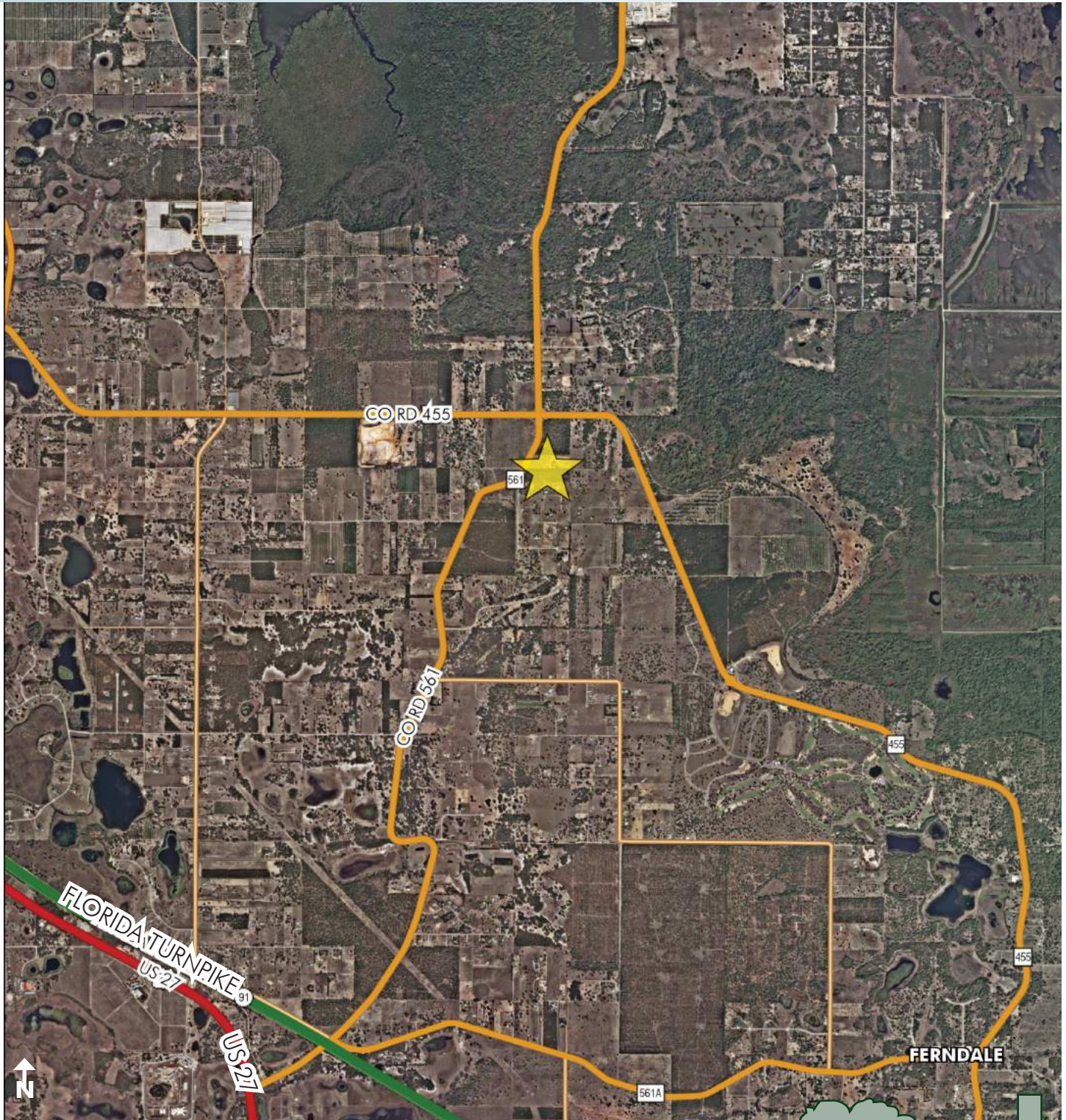
Maury L. Carter & Associates, Inc.  
407-422-3144 | [www.maurycarter.com](http://www.maurycarter.com)



# HWY 561 & HWY 455

10± acres

Lake County, FL



REGIONAL MAP

— Commercial Real Estate Investments | Management | Brokerage | Development | Land

Maury L. Carter & Associates, Inc.

407-422-3144 | [www.maurycarter.com](http://www.maurycarter.com)



