

**GREAT OWNER / USER WAREHOUSE**



**AIR-CONDITIONED WAREHOUSE**

**HIGHLIGHTS**

- 16,190 sf warehouse built in 1993 on 0.98 ac
- Approximately 1,444 sf of office
- 400 AMP power
- Three (3) grade level doors (12'x14')
- Two (2) loading pit doors (10'x10')
- Located in Sanford Industrial Park
- Within the Foreign-Trade Zone
- Easy access to I-4 and SR 417

**For more information, contact:**

**407.440.6646**

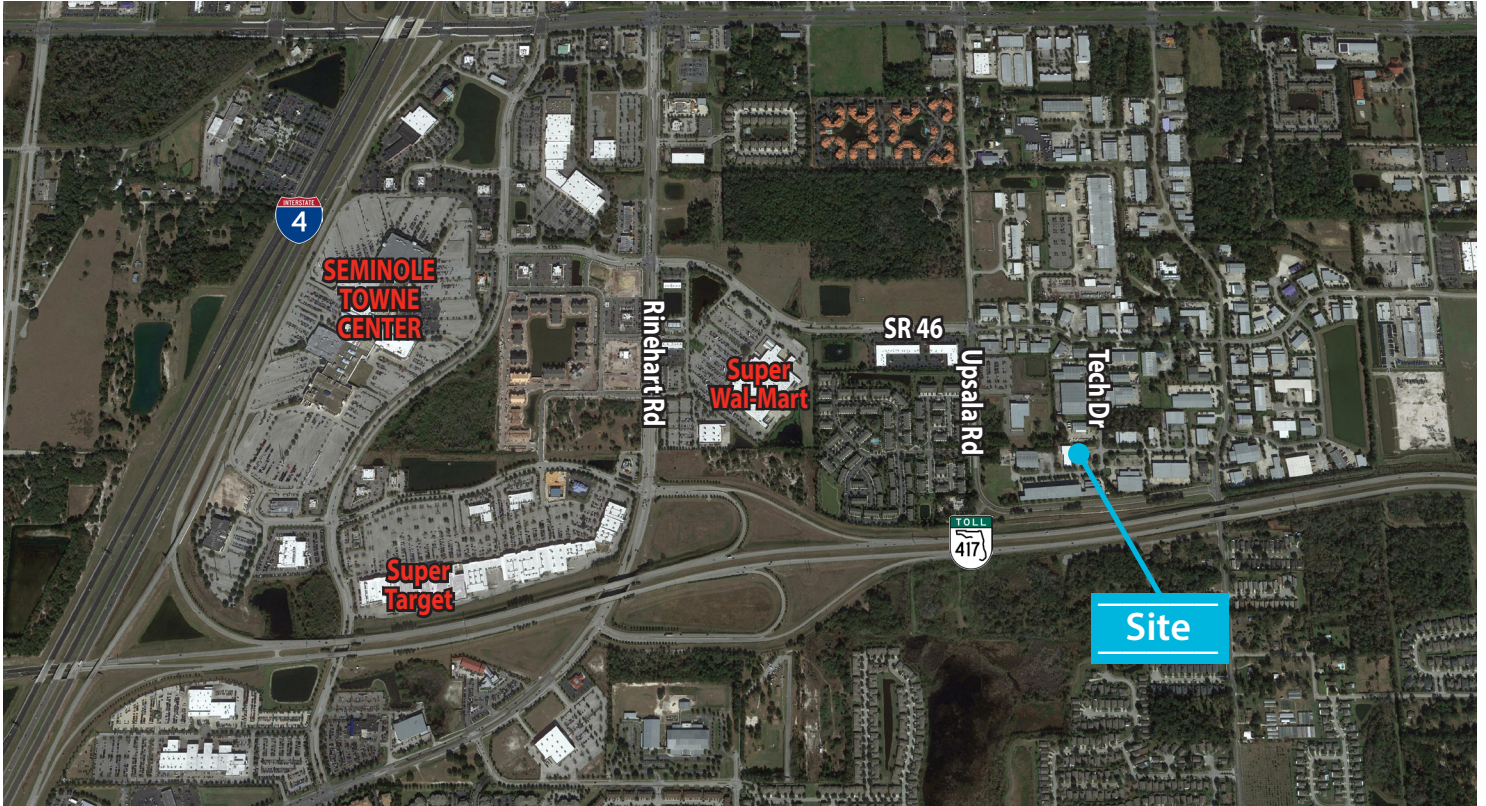
Lawson Dann  
lawson.dann@avisonyoung.com

**407.440.6643**

Scott Pamplin  
scott.pamplin@avisonyoung.com



# 130 TECH DRIVE SANFORD, FL 32771



Building:	16,190 SF
Zoning:	RI-1; Restricted Industrial District
Year Built:	1993
Doors:	3 Grade Level 12'x14' 2 Loading Pit 10'x10'
Power:	400 AMP

**SALE PRICE: \$1,182,000**  
**\$73.00/SF**

For more information, contact:



**407.440.6646**

Lawson Dann

lawson.dann@avisonyoung.com

**407.440.6643**

Scott Pamplin

scott.pamplin@avisonyoung.com

THE INFORMATION CONTAINED HEREIN WAS OBTAINED FROM SOURCES BELIEVED RELIABLE; HOWEVER, AVISON YOUNG MAKES NO GUARANTEES, WARRANTIES OR REPRESENTATIONS AS TO THE COMPLETENESS OR ACCURACY THEREOF.

THE PRESENTATION OF THIS PROPERTY IS SUBMITTED SUBJECT TO ERRORS, OMISSIONS, CHANGE OF PRICE, OR CONDITIONS, PRIOR TO SALE OR LEASE, OR WITHDRAWAL WITHOUT NOTICE.