

FOR SALE

COMMITMENT. INTEGRITY. TEAM. EXCELLENCE.

1531 EAST ALTAMONTE DRIVE CASSELBERRY, FL 32730

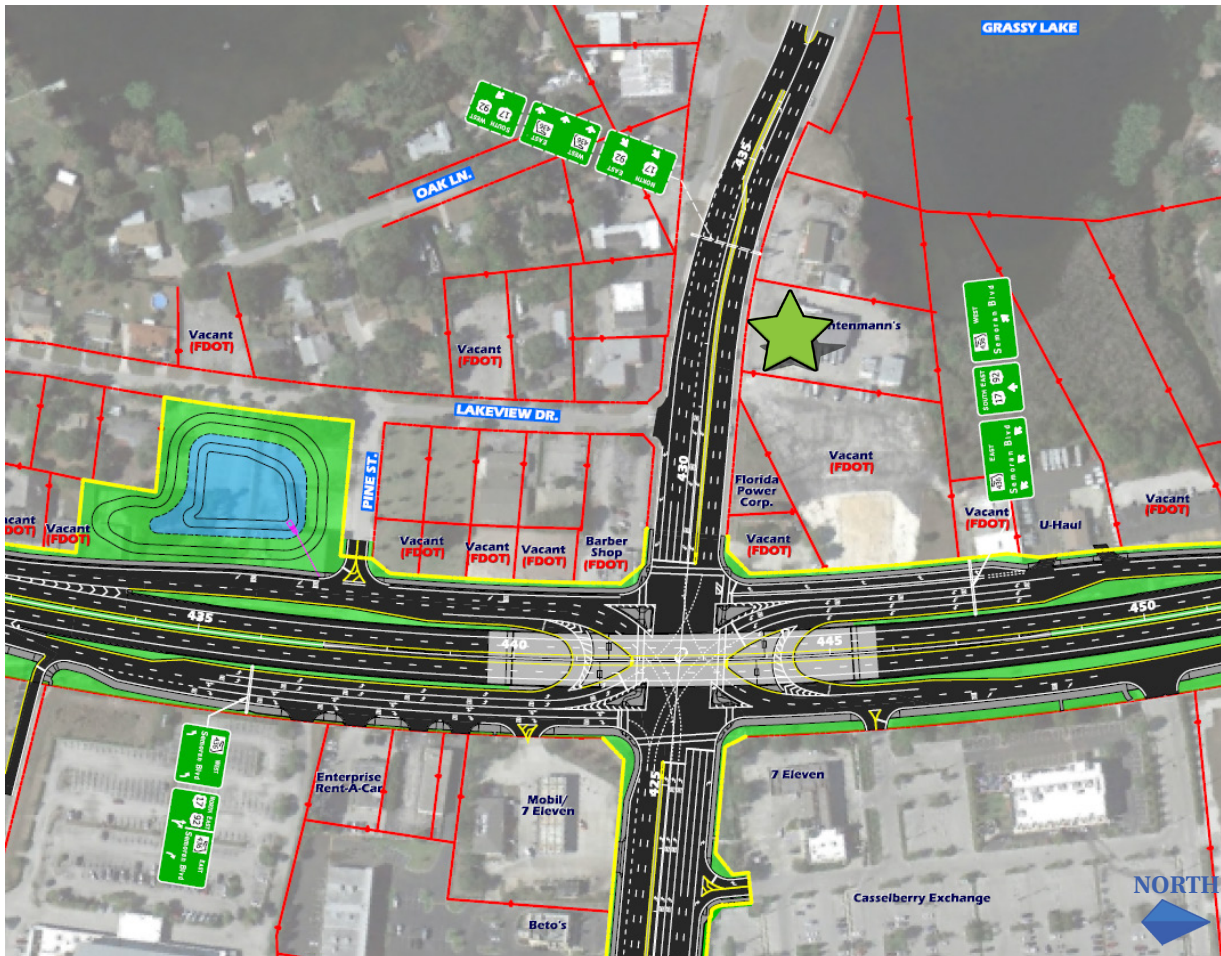


MATT SULLIVAN, SIOR, CCIM
Managing Director, Principal
matt.sullivan@citepartners.com
407.930.1802

WILSON MCDOWELL, SIOR, CCIM
Managing Director, Principal
wilson.mcdowell@citepartners.com
407.930.1801

BOBBY ISOLA, CCIM
Associate Director, Principal
bobby.isola@citepartners.com
407.930.1804





US 17-92 / SR 436 FLY-OVER

1531 E ALTAMONTE DR

THE PROPERTY

- 7,588 SF Total
- Front building - 6,400 SF
- Back building - 1,188 SF
- 1.01 Acres
- Zoned CG, General Commercial, City of Casselberry
- Excellent visibility on State Road 436
- Nearby amenities include Florida Hospital-Altamonte, the Altamonte Mall, and numerous restaurants and big box retailers
- 60,000 AADT

THE PRICE

- \$475,000

MATT SULLIVAN, SIOR, CCIM
 Managing Director, Principal
matt.sullivan@citepartners.com
 407.930.1802

WILSON MCDOWELL, SIOR, CCIM
 Managing Director, Principal
wilson.mcdowell@citepartners.com
 407.930.1801

BOBBY ISOLA, CCIM
 Associate Director, Principal
bobby.isola@citepartners.com
 407.930.1804

CITE PARTNERS
 100 South Orange Ave., Suite 500
 Orlando, FL 32801
www.citepartners.com

DISCLAIMER:
 This document has been prepared by Cite Partners for advertising and general information only. Cite Partners makes no guarantees, representations or warranties of any kind, expressed or implied, regarding the information including, but not limited to, warranties of content, accuracy and reliability. Any interested party should undertake their own inquiries as to the accuracy of the information. Cite Partners excludes unequivocally all inferred or implied terms, conditions and warranties arising out of this document and excludes all liability for loss and damages arising therefrom. This publication is the copyrighted property of Cite Partners and/or its licensor(s). All rights reserved.