

SALE INDUSTRIAL LAND

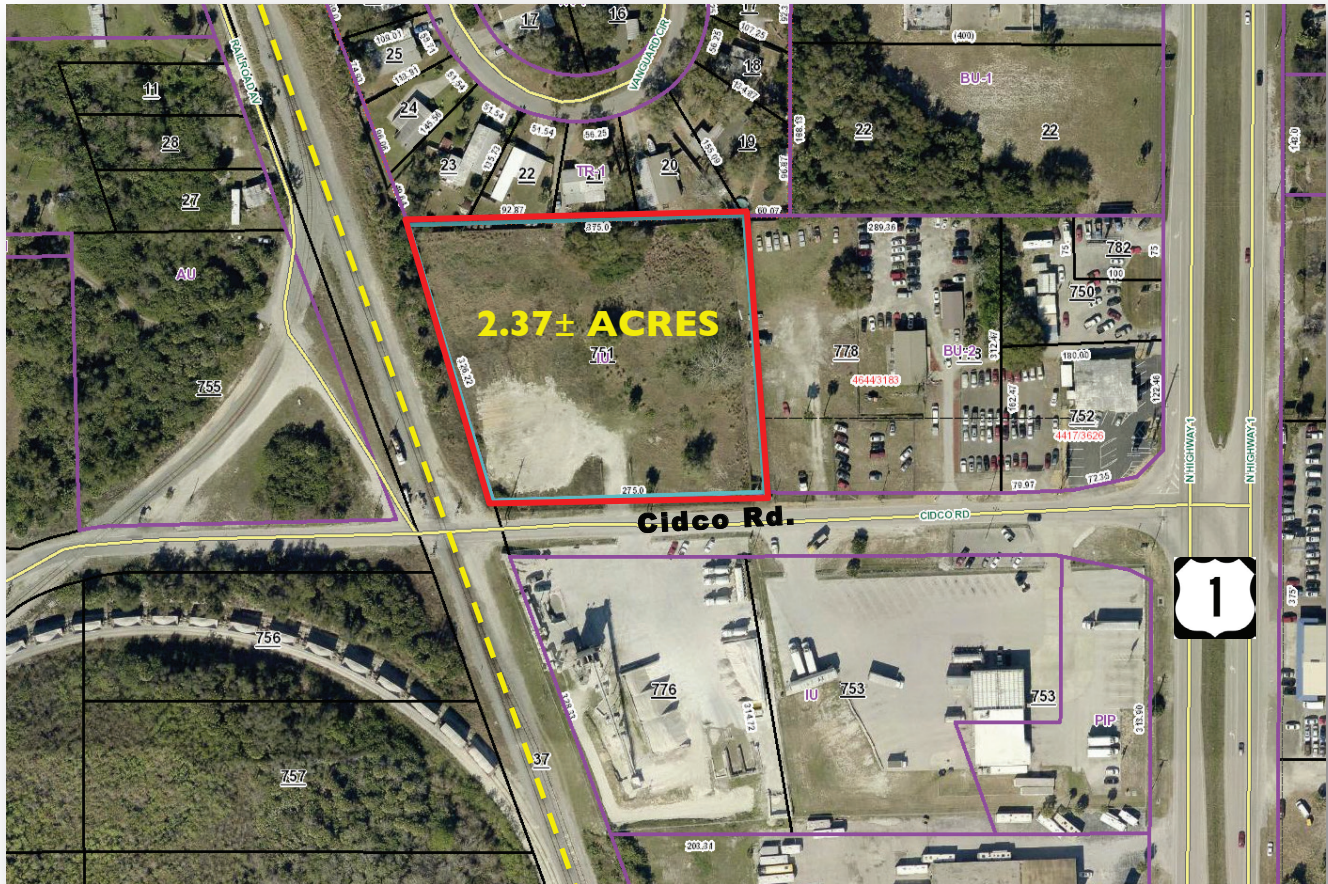
460 Cidco Road
Cocoa, FL 32926

VACANT LAND

2.37± ACRES

SALE PRICE

\$125,000.00



VACANT INDUSTRIAL LAND **North of the SR 528 & US I Interchange**

Zoning:	UI, Brevard County
Future Land Use:	CC, Brevard County
Parcel #:	24-36-07-00-00751.0-0000.00
Tax Account:	2411032
Road Frontage:	300± feet fronting on Cidco Rd.



LIGHTLE BECKNER ROBISON
INCORPORATED
COMMERCIAL REAL ESTATE SERVICES

www.TeamLBR.com

© Lightle Beckner Robison, Inc.
All Rights Reserved

MIKE MOSS

VP, Industrial Properties

(321) 722-0707 x12

Mike@TeamLBR.com

70 W. Hibiscus Blvd. · Melbourne, Florida 32901 · (321) 722-0581 fax

Information contained herein has been obtained from others and considered to be reliable;
However, a purchaser or lessee is expected to verify all information to his/her own satisfaction.

460 Cidco Road
Cocoa, FL 32926

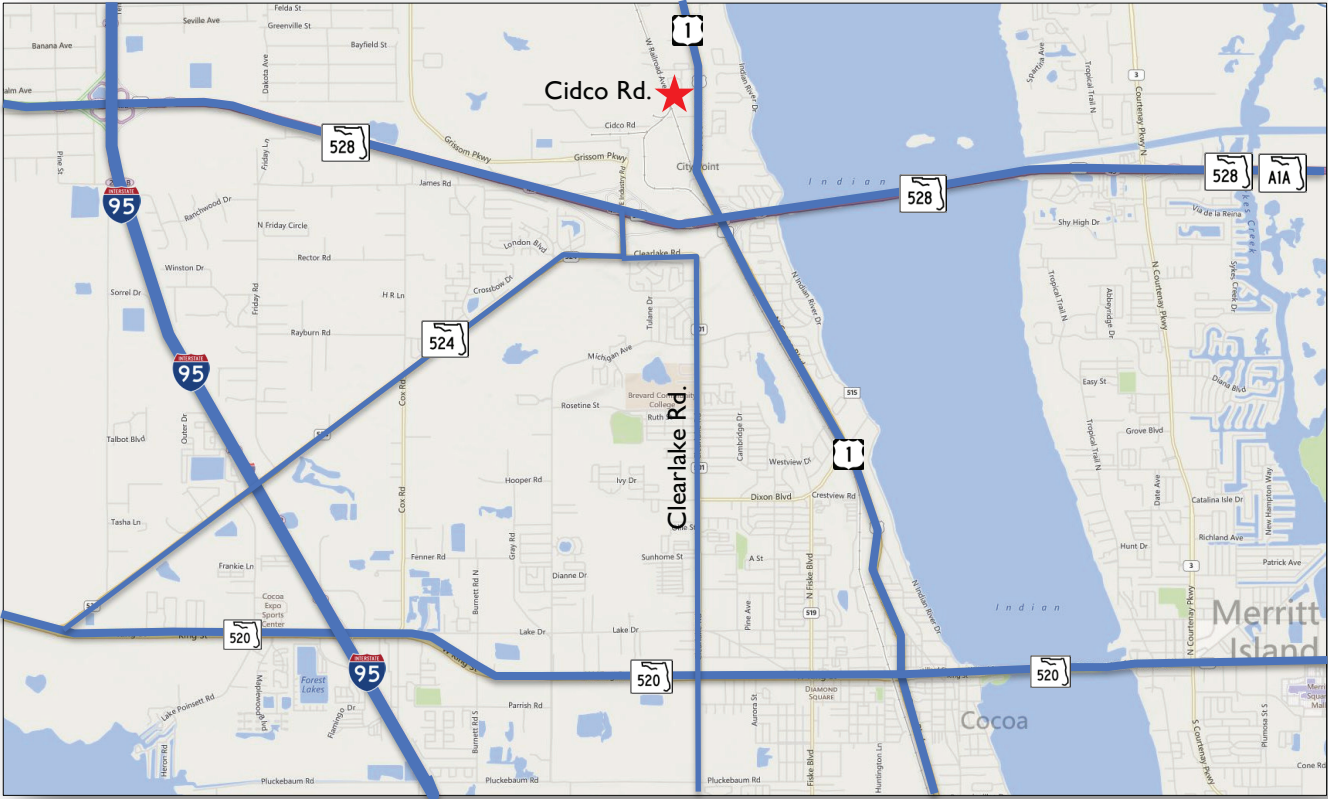
Located on Cidco Rd.
just north of the
US 1 & SR 528 intersection

DISTANCES:

- .1 mile US 1
- .8 mile US 1 & 528 intersection
- .9 mile SR 528 & Industry Rd.
- 4.3 miles I-95 via SR 528
- 10 miles Port Canaveral
- 34 miles Orlando

GPS:

Longitude: -80.757086
Latitude: 28.410697



LIGHTLE BECKNER ROBISON
INCORPORATED
COMMERCIAL REAL ESTATE SERVICES

www.TeamLBR.com

© Lightle Beckner Robison, Inc.
All Rights Reserved

MIKE MOSS
VP, Industrial Properties
(321) 722-0707 x12
Mike@TeamLBR.com

70 W. Hibiscus Blvd. · Melbourne, Florida 32901 · (321) 722-0581 fax
Information contained herein has been obtained from others and considered to be reliable;
However, a purchaser or lessee is expected to verify all information to his/her own satisfaction.