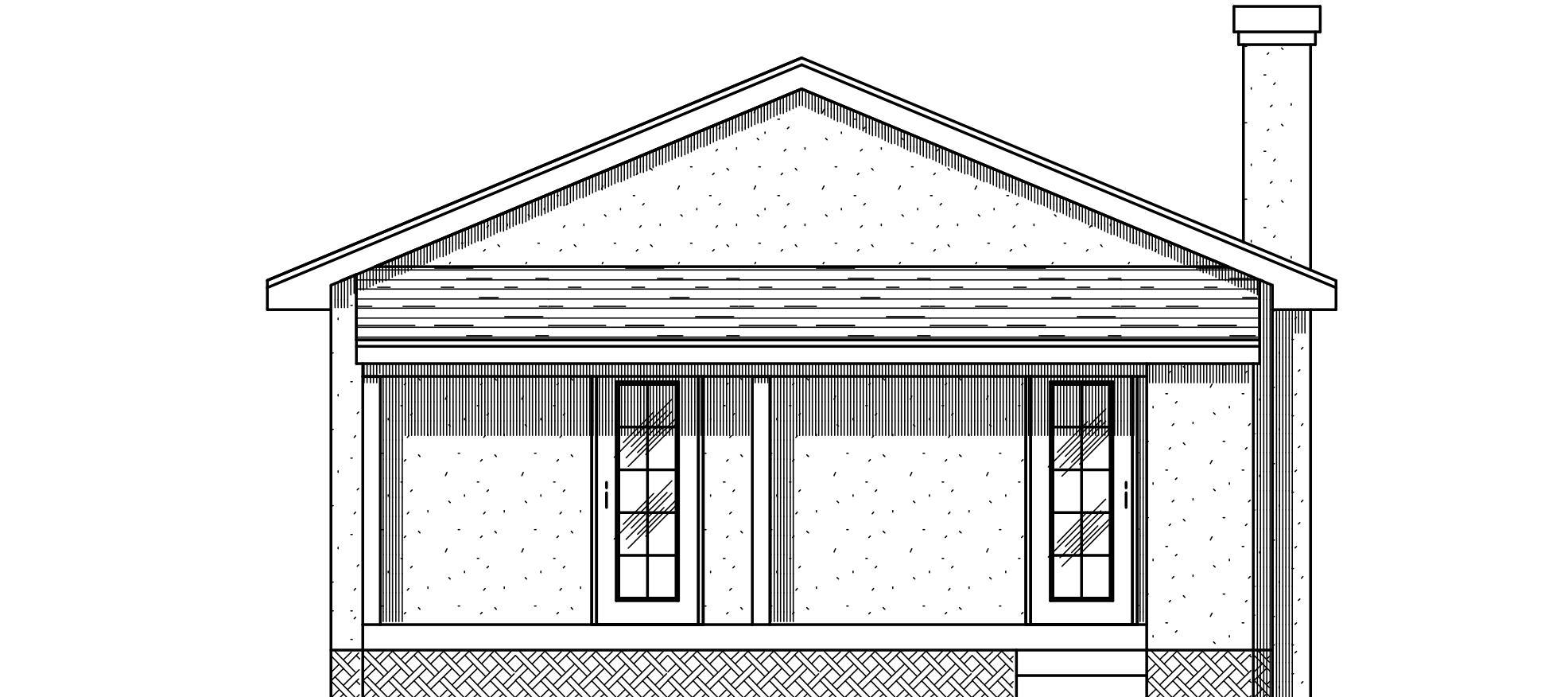


-----LEFT SIDE ELEVATION-----

SCALE: 1/4" = 1'-0"



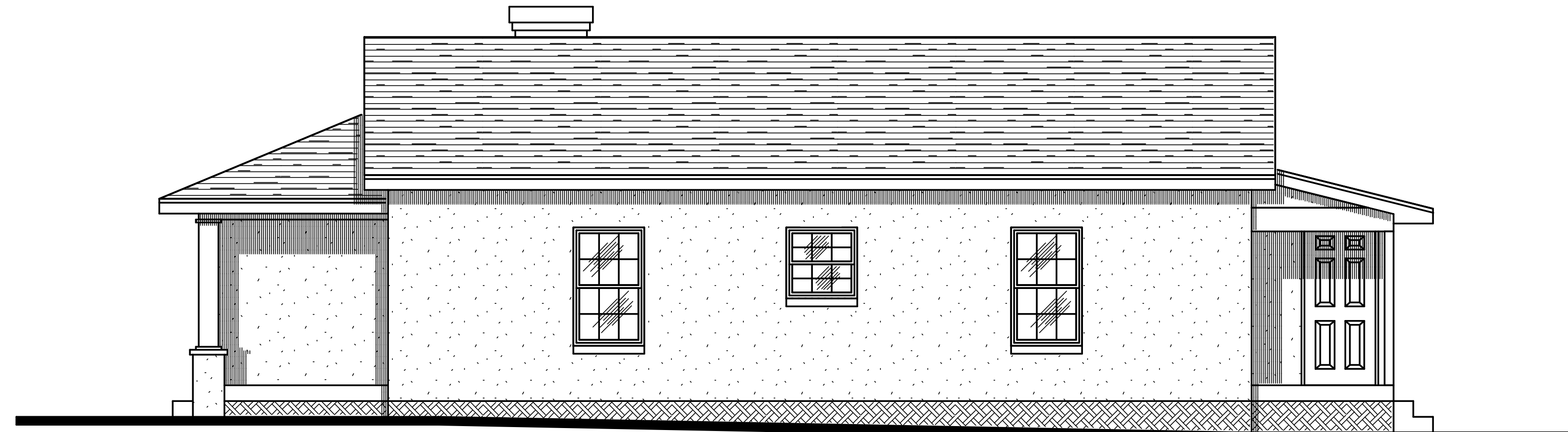
-----REAR ELEVATION-----

SCALE: 1/4" = 1'-0"



-----FRONT ELEVATION-----

SCALE: 1/4" = 1'-0"



-----RIGHT SIDE ELEVATION-----

SCALE: 1/4" = 1'-0"



J. LEE SMITH, P.E.
P.E. #36171
ENGINEERING SERVICES GROUP, LLC
4400 NORTH HIGHWAY 19-A, SUITE 2
MT. DORA, FL 32751
CA # 8886
PHONE: (352) 388-1135

THIS IS A LEVEL II ALTERATION AS PER THE FLORIDA EXISTING BUILDING CODE
VULT = 140 MPH
VA&D = 108 MPH
EXPOSURE CATEGORY "C"
WIND RISK CATEGORY "II"
INTERNAL PRESSURE COEFFICIENT = +/-0.18 (FULLY ENCLOSED)
WIND PRESSURES FOR COMPONENT AND CLADDING FOR WALL ELEMENTS SHALL BE (+)21.8 & (-)29.1 PSF
GARAGE DOOR DESIGN PRESSURE +19.1 & -21.6 PSF

THE STRUCTURE HAS BEEN DESIGNED IN ACCORDANCE WITH THE 2010 RESIDENTIAL FLORIDA BUILDING CODE FOR 140 MPH OR LESS WIND SPEED. WIND LOADING CRITERIA IS GOVERNED BY ASCE 7-10

RENOVATIONS AT :		DRAWN BY: B.R.S.
1712 WEST MAIN STREET, LEESBURG, FLORIDA		REVISED:
SCALE: STATED	APPROVED:	DRAWING NUMBER:
DATE: 6 - 10 - 2014		1 OF 5
SHAHER RESIDENTIAL DESIGN EUSTIS, FLORIDA 352 - 588 - 1333		