

LAKE MARY MEDPLEX BUILDING

4106 W. Lake Mary Boulevard, Suite 205
Lake Mary, FL 32746

Property Summary

Property: Lake Mary MedPlex Building
Suite 205

Status: For Sale or Lease

Size: 1,990 SF

Price: **For Sale \$249,000**
For Lease \$18.95 per SF Gross
Tenant paying Janitorial and Utilities



Year Built: 1998

Zoning: PO 'Professional Office'

Population (est):	<u>1 MILE</u> 6,642	<u>3 MILES</u> 55,152	<u>5 MILES</u> 129,000
-------------------	------------------------	--------------------------	---------------------------

Average HHI (est.):	<u>1 MILE</u> \$66,933	<u>3 MILES</u> \$94,303	<u>5 MILES</u> \$81,956
---------------------	---------------------------	----------------------------	----------------------------

Traffic Count: 49,663 vehicles per day - Lake Mary Boulevard

- Property Highlights:
- Located in Lake Mary MedPlex Building
 - 1,990 SF Medical/Professional Office Condo
 - Move-In Condition
 - Great Floor Plan with Four Exam Rooms, One larger Procedure Room, Kitchen, Reception/ Administration, Lobby, Two Storage Rooms, One Doctor's Office, Two Interior Bathrooms, and Lobby
 - Excellent Parking
 - Ready for Immediate Occupancy!
 - Located approximately one mile east of Interstate 4

R o c k S o l i d i n C o m m e r c i a l R e a l E s t a t e

John W. Trost, PA, CCIM
(386) 253-8565 Ext.115 Office
(386) 295-5723 Mobile
JTROST@CCIM.NET

www.JohnTrost.com

PICTURES

PRUDENTIAL COMMERCIAL

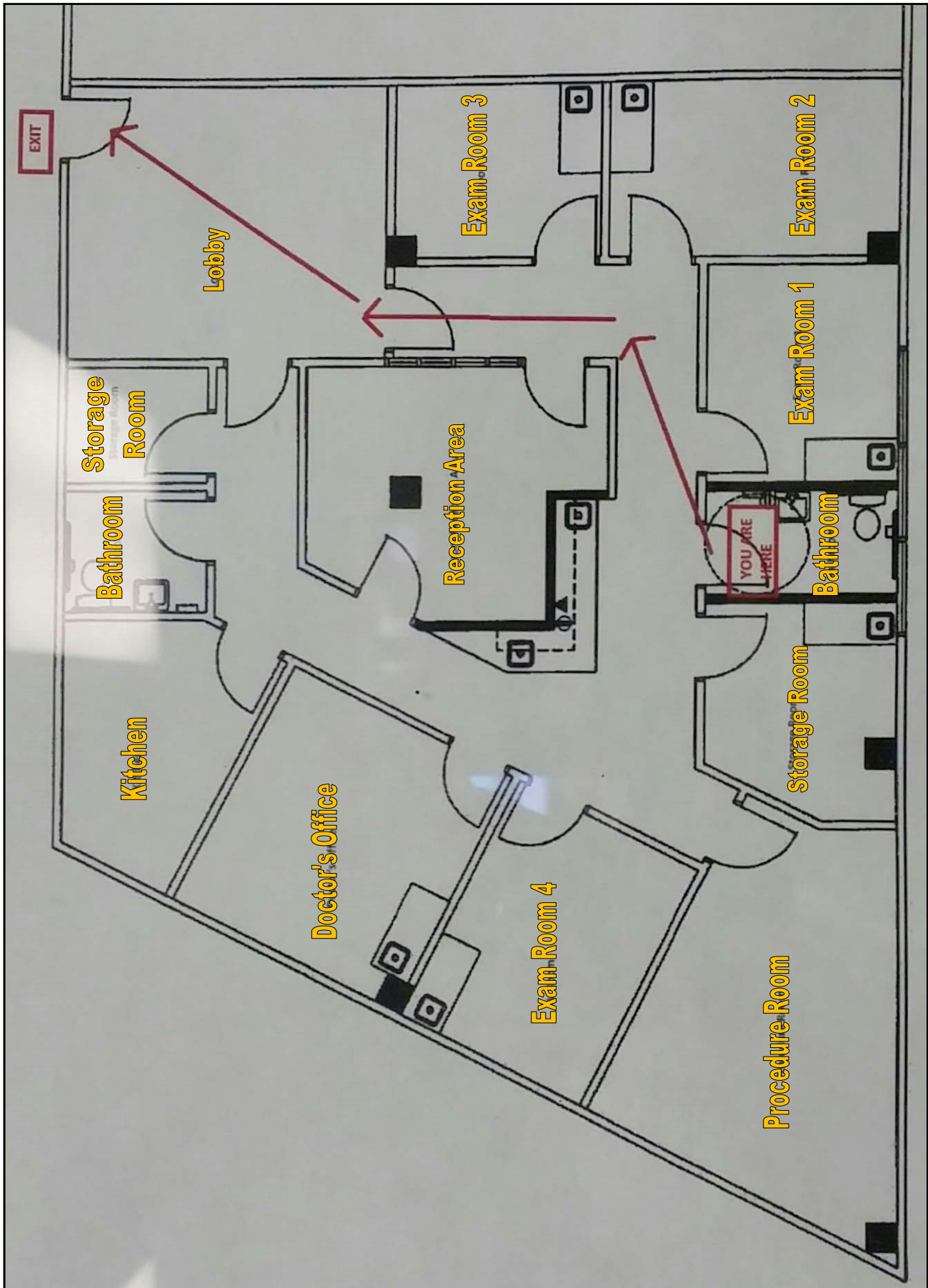


ROCK SOLID IN COMMERCIAL REAL ESTATE

Information contained herein is believed to be accurate, but not guaranteed and may change without notice.

FLOOR PLAN

PRUDENTIAL COMMERCIAL



ROCK SOLID IN COMMERCIAL REAL ESTATE

Information contained herein is believed to be accurate, but not guaranteed and may change without notice.

©2012 BRER Affiliates Inc. An independently owned and operated broker member of BRER Affiliates Inc. Prudential, the Prudential logo, and the Rock symbol are service marks of Prudential Financial, Inc. and its related entities, registered in many jurisdictions worldwide. Used under license with no other affiliation with Prudential.

