

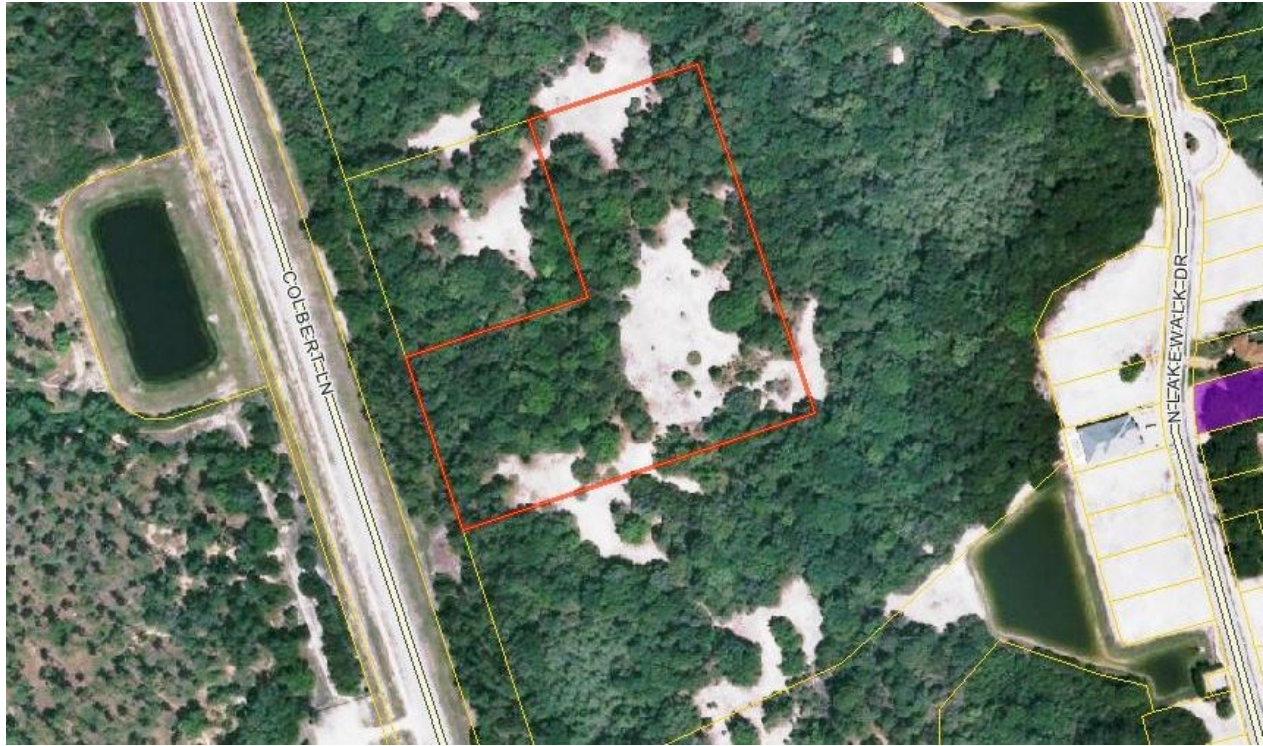


# SELBY REALTY

Brokers ♦ Managers ♦ Developers

## Vacant Land FOR SALE

### E. Side of Colbert Lane—Palm Coast, FL



#### Property Details:

**Property Location:** East side of Colbert Lane, North of Lakeview Drive. Part of Reserve Tract R of Palm Coast Plantation PUD Palm Coast, FL 32136

**Lot Size:** 5.64 Acres

**Property ID:** Flagler County 27-11-31-4892-00000-00-R1

**Zoned:** C-1 Neighborhood Commercial  
by Flagler County

**Description:** 5.64 acres available for  
neighborhood commercial

**Price: \$325,000**

#### FOR MORE INFORMATION CALL:

**Dwight Selby, CCIM**

Office: 386.238.4456 ext. 304 | Cell 386-295-8729

Email: [dselby@selbyrealty.com](mailto:dselby@selbyrealty.com)

**Selby Realty, Inc.**

200 E. Granada Blvd, Suite 200 | Ormond Beach, FL 32176

Telephone: (386) 238-4456 | Fax: (386) 238-8377

[www.selbyrealty.com](http://www.selbyrealty.com)