



*Sunshine*  
Professional Realty Corp.  
"Committed to your Satisfaction"

# VACANT LAND COMMERCIAL

## Commercial Lots Near Downtown Clearwater

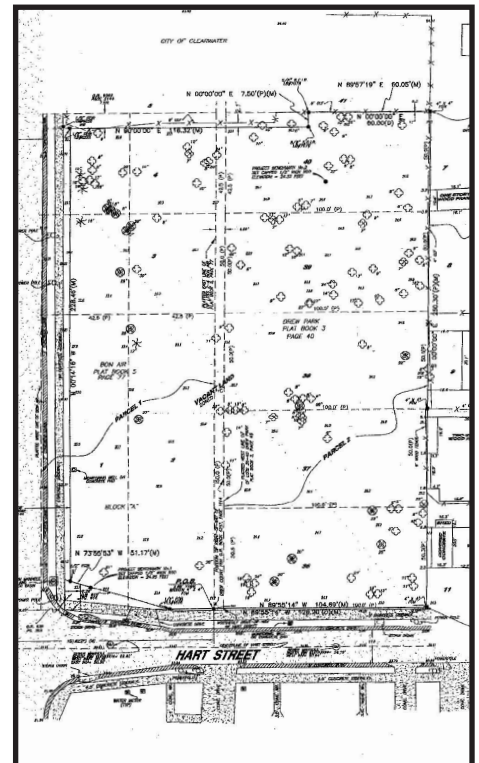
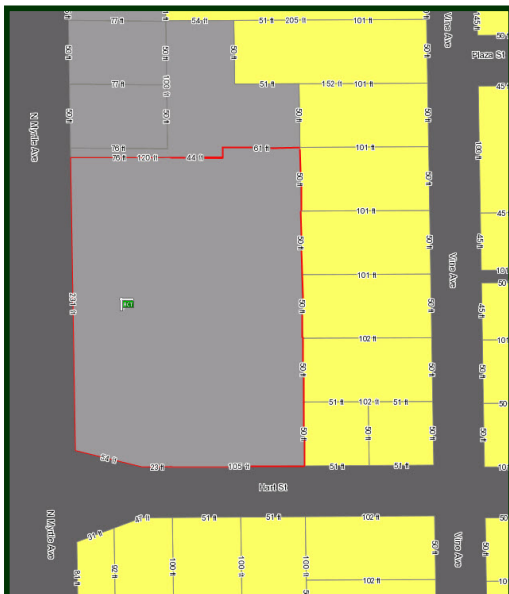
**\$285,000**

MLS # U7559004

N. Myrtle & Hart Clearwater, FL  
1 acre treed lot on the NE corner of  
N. Myrtle & Hart

Absolutely beautiful corner lots, together approx 1 acre,  
comm. zoned, blocks from downtown Clearwater, on  
high traffic street. Business opportunity! Lots of trees!

Online Tour:  
[www.electrotours.com/00](http://www.electrotours.com/00)



**[www.SunshinePRC.com](http://www.SunshinePRC.com)**

**Gro Miller** — Broker/Owner, CIPS, Lic. CAM, Notary Public, "Institute Candidate"  
Cell: 727-207-9239 Office: 727-210-6300 Fax: 727-210-6301 E-mail: [gro@gromiller.com](mailto:gro@gromiller.com)

