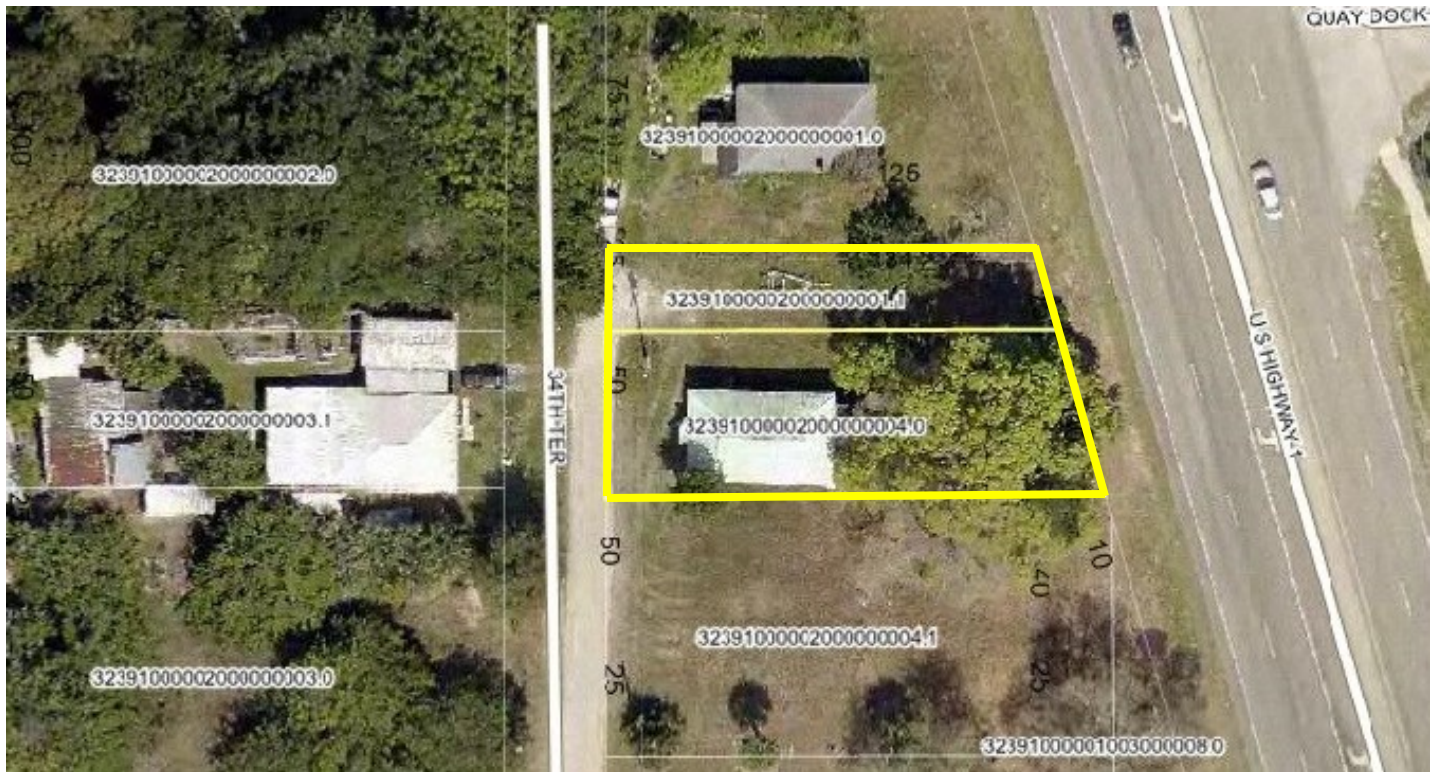


.23 ACRES ON U.S. 1 WITH HOUSE FOR SALE

6730 & 6740 34th Terrace, Vero Beach, Florida



LAND SIZE: .23 Acres with 75 Ft. of Frontage on U.S. 1 with 275 Ft. of Depth

ZONING: CL - Commercial Light

RE TAXES: \$611.23 (2013)

UTILITIES: County Water, Septic Tank & FPL

PRICE: \$49,000

TRAFFIC COUNT: 20,962 APPROX. (2013)

FEATURES:

- US 1 Visibility
- Could be assembled with additional property to south
- Can be used for a variety of commercial usage
- 1104 SF House also on property

CONTACT: Billy Moss 772-713-4471



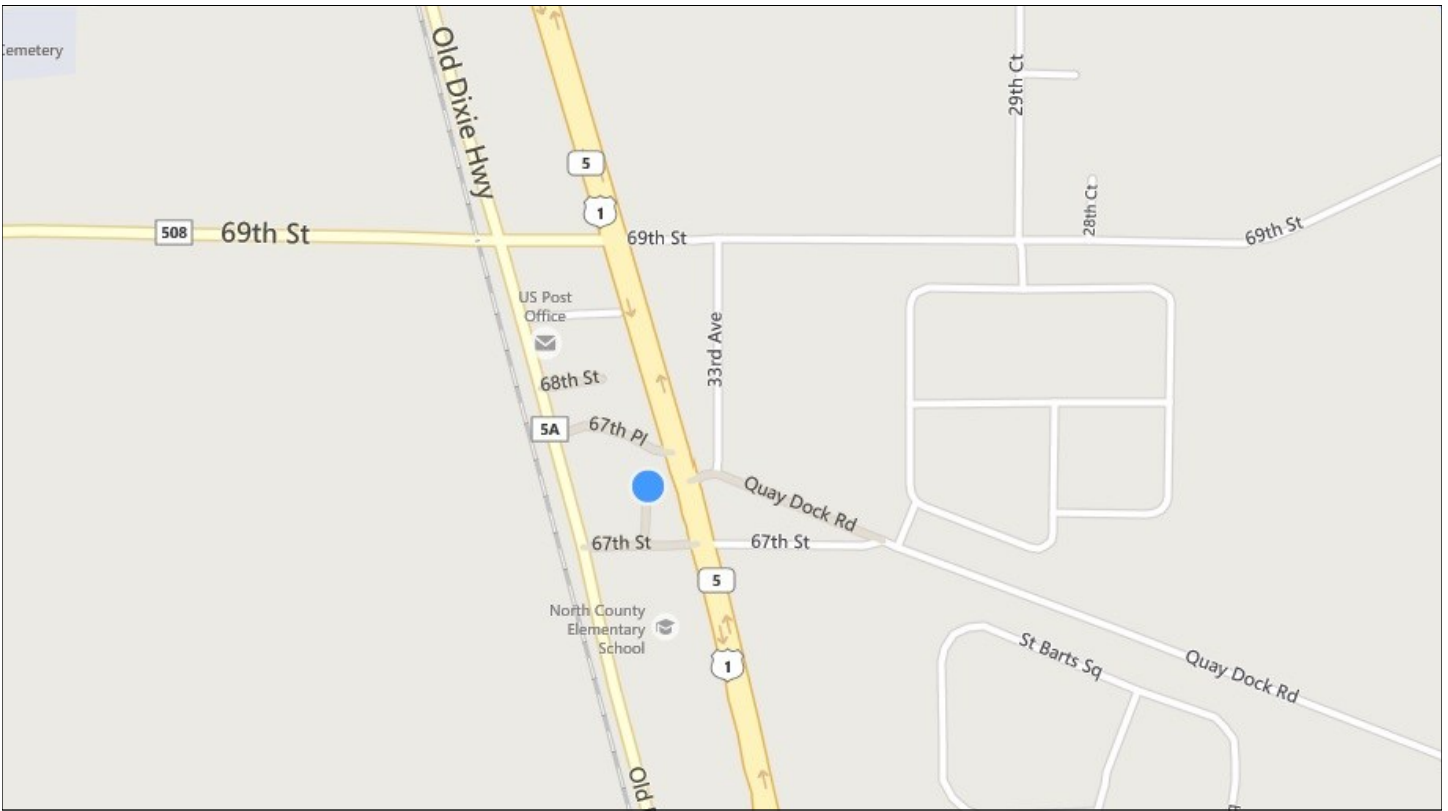
L A M B E R T
COMMERCIAL REAL ESTATE INC.

2945 20th Street, Vero Beach, Florida

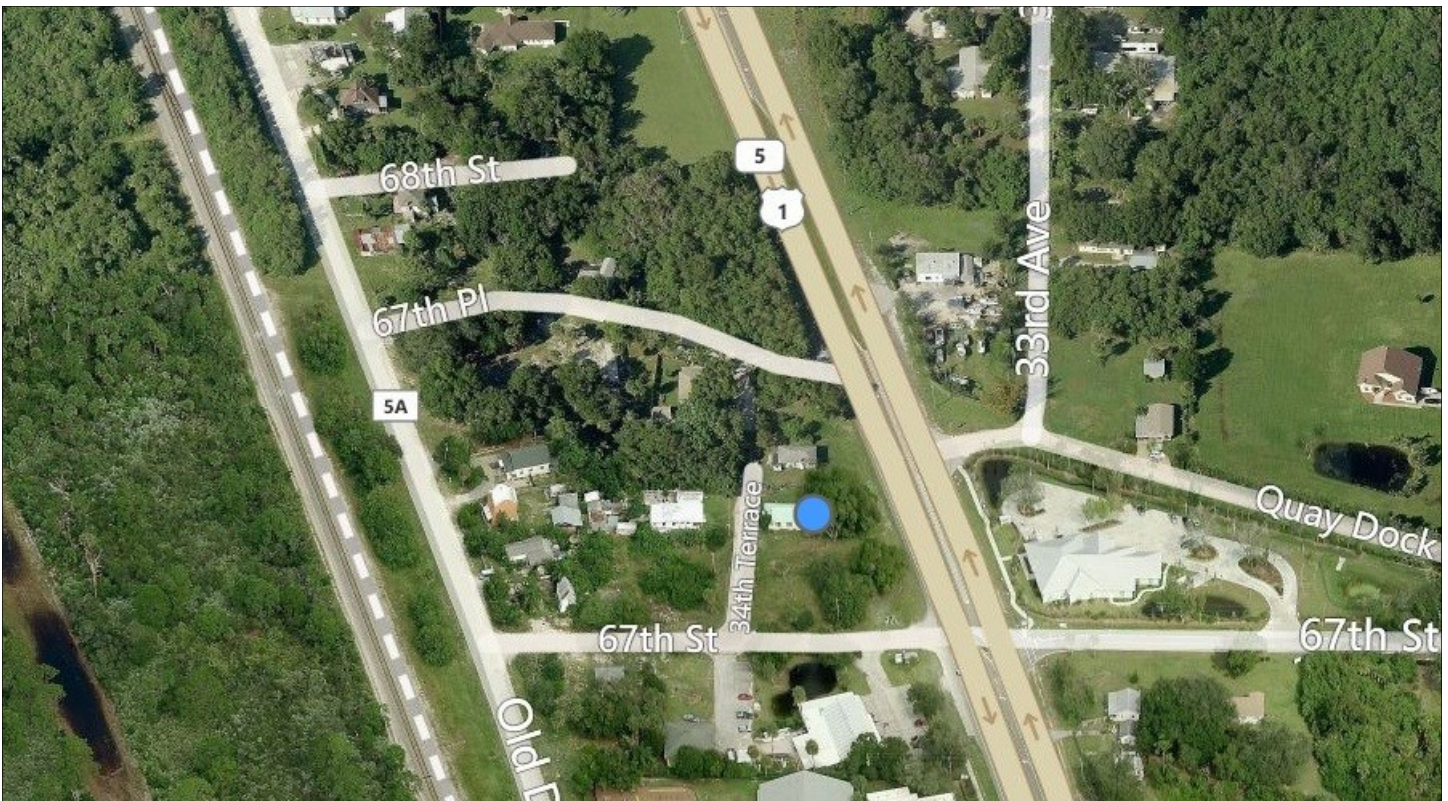
Information Not Warranted

CALL (772) 778-2334

LOCATOR MAP



BIRD'S EYE



COUNTY SKETCH

