

**Crosby  
&  
Associates, Inc.**  
Licensed Real Estate Broker

Was \$80,000

Now \$70,000



*Potential for*  
development *or* farm income

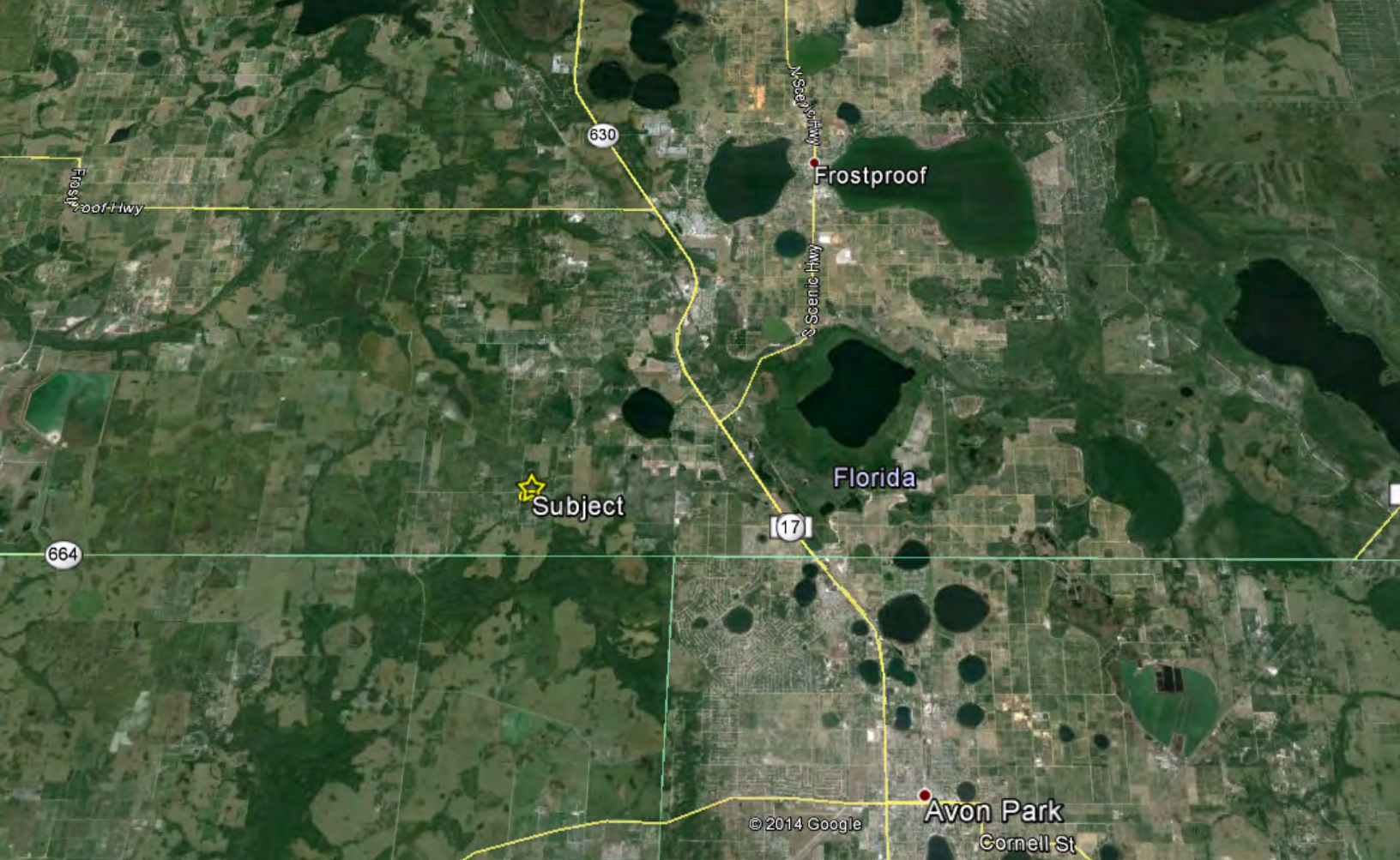



# 20± ACRE VACANT LAND

Former Citrus Grove in Fort Meade, Florida

Location: Traveling south on U.S. Highway 27, turn right onto Avon Park Cut-Off Road. Travel west for approx. 2.5 miles. Turn south on E Berea Road. Travel south for 0.8 miles. The property is on the left.

- Zoning: Residential
- Hard Road Frontage
- Greenbelt Ag Exemption Potential



**Trevor Williams**   
[trevor@crosbydirt.com](mailto:trevor@crosbydirt.com)  
 863.289.7222 [cell]

Lake Wales native, Trevor knows the beautiful land of central Florida well. he is committed to listening to his client's needs, with the end goal of providing representation that inspires confidence.



*All information contained herein has been obtained from sources deemed reliable. However, Crosby & Associates, Inc. or any agent thereof cannot guarantee this information. We are not responsible for errors, omissions, prior sale, change in price, easements, zoning changes or withdrawal of property from the market without notice.*

## Crosby & Associates, Inc.

505 Avenue A NW, Suite 306  
 Winter Haven, FL 33881  
 862.293.5600

255 West Main street  
 Tavares, FL 32778  
 352.343.1464

52 Commerce Street  
 Hawkinsville, GA 31036  
 800.320.3477



[www.crosbydirt.com](http://www.crosbydirt.com)