

# SALE VACANT LAND

US 192 at Partin Settlement Rd.  
(E Irlo Bronson Memorial Hwy)  
Kissimmee, FL 34744

**COMMERCIAL LAND - 28.36± ACRES**

**SALE PRICE: \$4,500,000.<sup>00</sup>**

## PARCEL IDs:

29-25-30-2542-0001-FD10 – 2.36 Acres  
29-25-30-2542-0001-FD20 – 23.82 Acres  
29-25-30-2542-0001-FD30 – 2.14 Acres



Directly on US 192 (Irlo Bronson Memorial Hwy.) at Partin Settlement Rd., across from Partin Village, a brand new Publix anchored retail center

## HIGHLIGHTS:

- Orlando MSA
- Directly on US 192 (E Irlo Bronson Mem. Hwy)
- Combined traffic count: 48,726 CPD
- Across from 65,000+ sf, Publix anchored retail center
- Just east of Florida Turnpike (exit #244)
- Signalized intersection (by CVS)
- Across from Osceola County offices
- Growth area



**LIGHTLE BECKNER ROBISON**  
INCORPORATED  
COMMERCIAL REAL ESTATE SERVICES

[www.TeamLBR.com](http://www.TeamLBR.com)

© Lightle Beckner Robison, Inc.  
All Rights Reserved

**Brian L. Lightle, CCIM, SIOR**

(321) 722-0707 x14

(877) 722-0707 x14

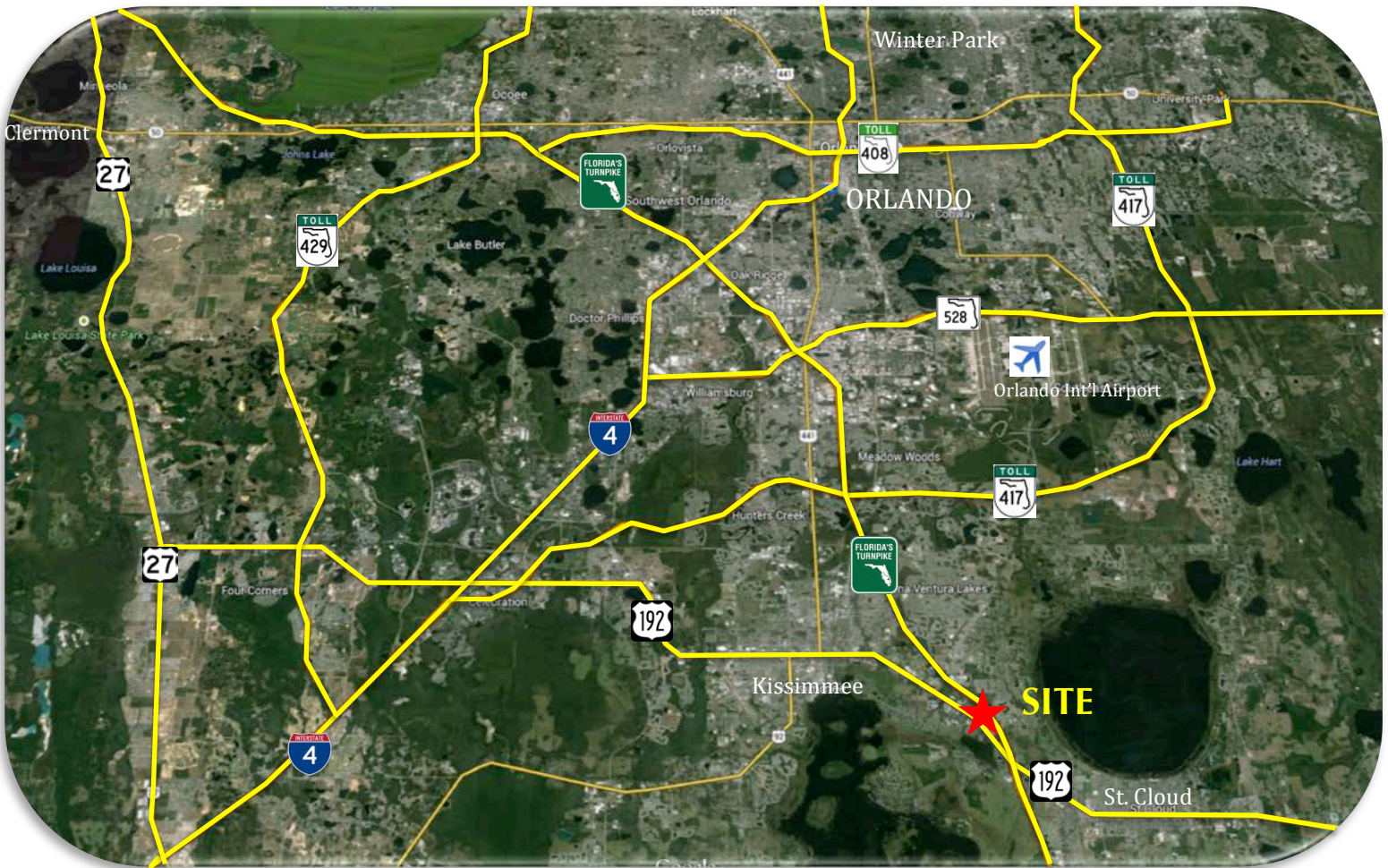
[Brian@TeamLBR.com](mailto:Brian@TeamLBR.com)

1398 South Babcock Street · Melbourne, Florida 32901 · (321) 722-0581 fax

Information contained herein has been obtained from others and considered to be reliable;  
However, a purchaser or lessee is expected to verify all information to his/her own satisfaction.



US 192 at Partin Settlement Rd.  
 (E Irlo Bronson Memorial Hwy)  
 Kissimmee, FL 34744



Osceola County, Florida serves as the south/central boundary of the greater Central Florida county metropolitan area encompassing approximately 1,506 square miles. It is home to two incorporated jurisdictions including the cities of Kissimmee and St. Cloud. Osceola County is currently experiencing growth which presents a variety of exciting opportunities.

**Osceola County delivers on a commitment to fully assist relocating corporations.** The county's unique 5-day Fast-Track Permitting is made possible by the cooperation of the "I Develop Osceola – I Do Team" comprised of local governments, county departments, utility providers, representatives of state agencies and others as determined by each project.

Florida City Distances in Relation to Osceola County		
City	Distance miles	Travel Time min.
Miami	167.7	161
Tampa	59.8	60
Orlando	18.1	23
Jacksonville	158.0	154
Tallahassee	266.7	272



**LIGHTLE BECKNER ROBISON**  
 INCORPORATED  
 COMMERCIAL REAL ESTATE SERVICES

www.TeamLBR.com

© Lightle Beckner Robison, Inc.  
 All Rights Reserved

**Brian L. Lightle, CCIM, SIOR**

(321) 722-0707 x14

(877) 722-0707 x14

Brian@TeamLBR.com

1398 South Babcock Street · Melbourne, Florida 32901 · (321) 722-0581 fax

Information contained herein has been obtained from others and considered to be reliable; However, a purchaser or lessee is expected to verify all information to his/her own satisfaction.