

AGRICULTURAL RESIDENTIAL ACREAGE

BANK OWNED

4.55± acres • Lake County, FL

**PRICE
REDUCED**

LAND FOR SALE



LOCATION

19441 Villa City Road, Groveland, FL 34736. 5± miles north of downtown Groveland, 4.5± miles northeast of Mascotte, 8± miles northwest of Clermont and 7.5± miles southwest of Howie in the Hills.

SIZE

4.55± acres

PRICE

REDUCED to \$125,000 (from \$150,000)

ZONING/FUTURE LAND USE

A - Agriculture (1 unit/5 acres). FLU: Rural Transition Area

ROAD FRONTAGE

415'± on Villa City Road (Hwy 545)

UTILITIES

Well(s) and septic available on-site. One 4" submersible 1.5HP. Power available on-site and runs S-N through middle of property.

STRUCTURES

2,532 sf mobile home (livable condition), 640 sf structure (on-site office).

DESCRIPTION

BANK OWNED. The property consists of 100% uplands. The property was previously in nursery production and is surrounded by similar residential "ranchettes" (small-large scale farms, ranches, groves).

PARCEL ID

30-21-25-000200001100

Offering subject to errors, omission, prior sale or withdrawal without notice.

— Commercial Real Estate Investments | Management | Brokerage | Development | Land

Maury L. Carter & Associates, Inc.
407-422-3144 | www.maurycarter.com



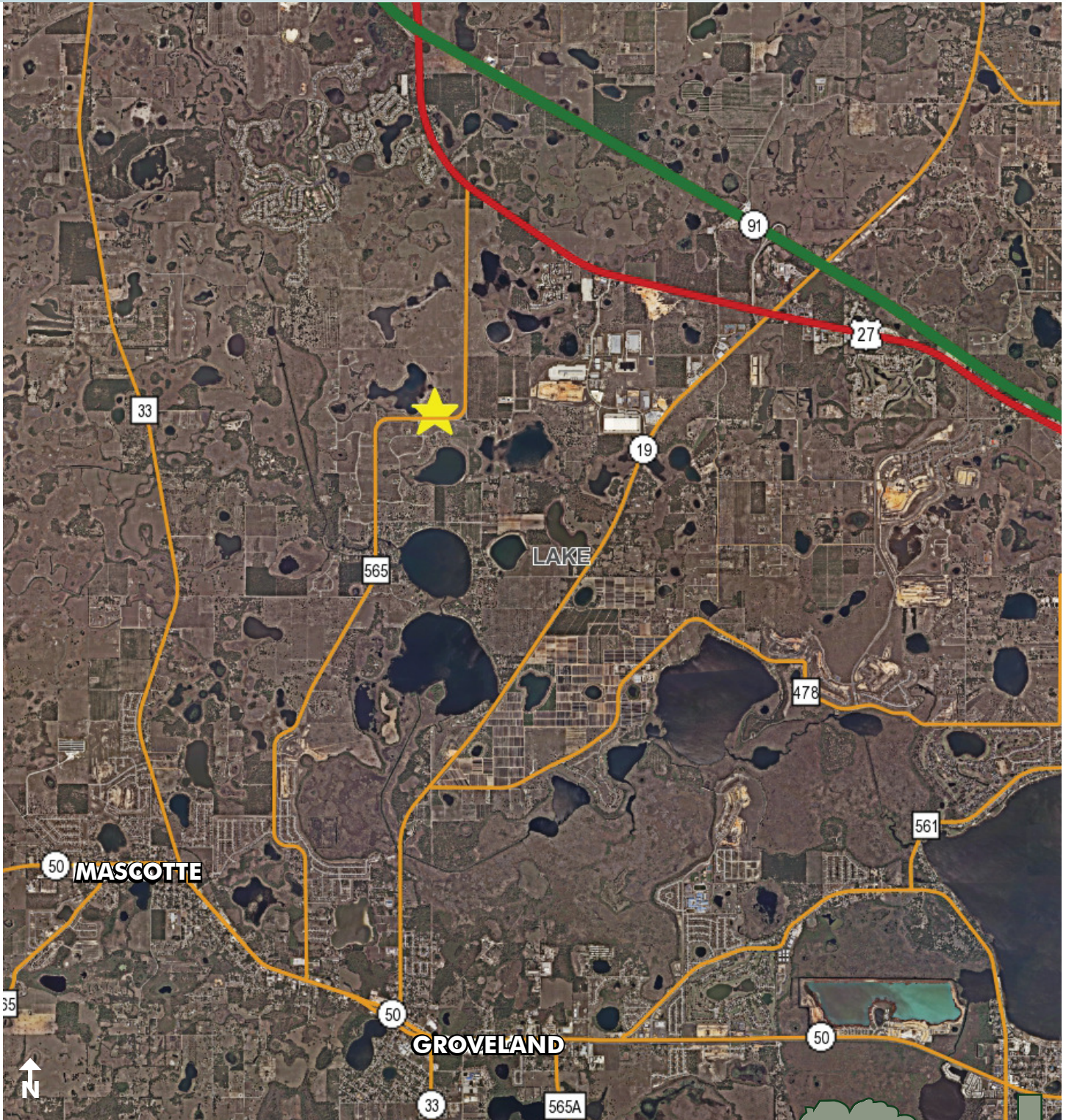
Maury L. Carter & Associates, Inc.SM
Licensed Real Estate Broker

AGRICULTURAL RESIDENTIAL ACREAGE

BANK OWNED

4.55± acres • Lake County, FL

**PRICE
REDUCED**



LOCATION MAP

— Commercial Real Estate Investments | Management | Brokerage | Development | Land

Maury L. Carter & Associates, Inc.
407-422-3144 | www.maurycarter.com



AGRICULTURAL RESIDENTIAL ACREAGE

BANK OWNED

4.55± acres • Lake County, FL

**PRICE
REDUCED**



REGIONAL MAP

— Commercial Real Estate Investments | Management | Brokerage | Development | Land

Maury L. Carter & Associates, Inc.
407-422-3144 | www.maurycarter.com

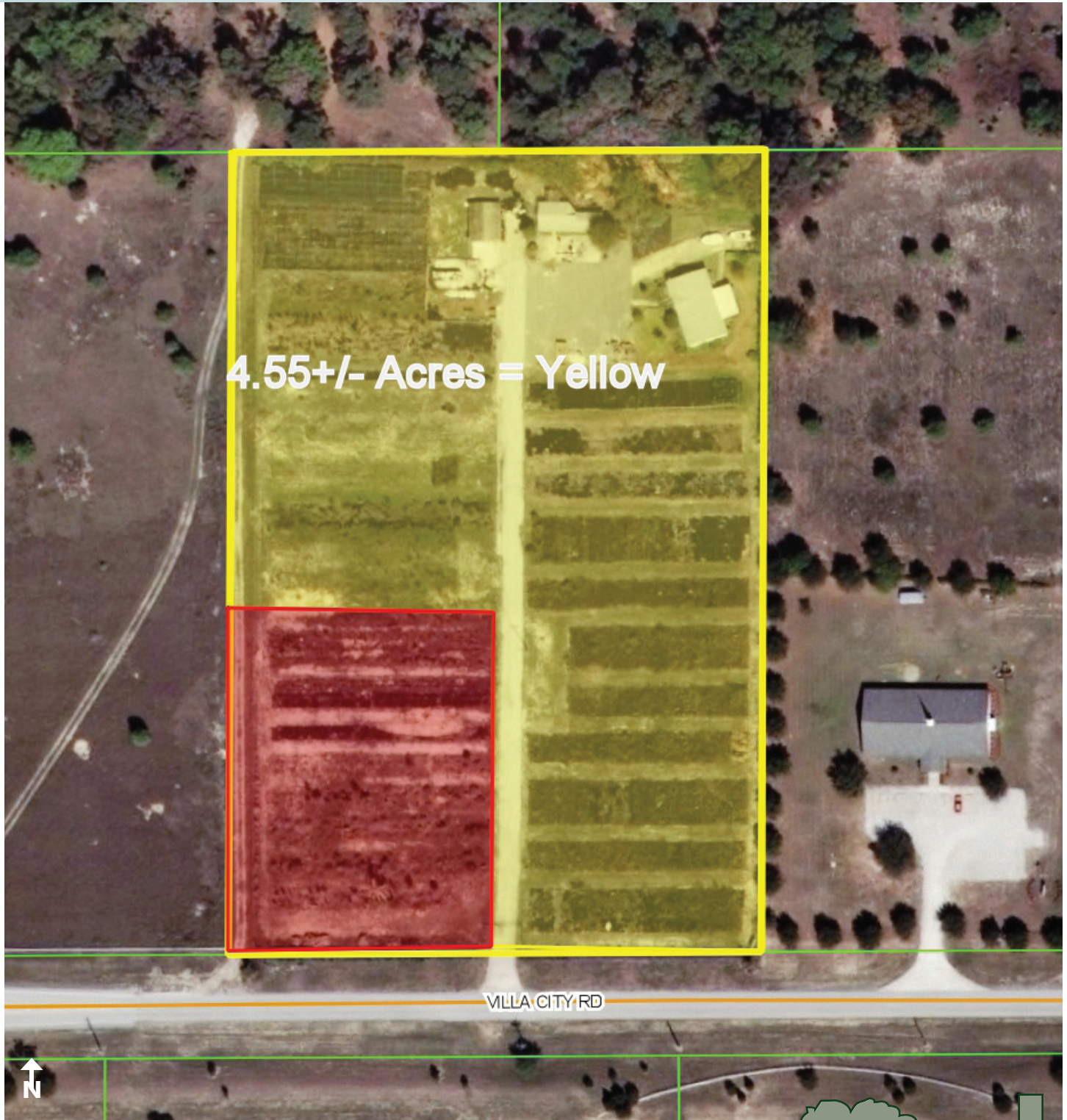


AGRICULTURAL RESIDENTIAL ACREAGE

BANK OWNED

4.55± acres • Lake County, FL

**PRICE
REDUCED**



PARCEL MAP

— Commercial Real Estate Investments | Management | Brokerage | Development | Land

Maury L. Carter & Associates, Inc.
407-422-3144 | www.maurycarter.com

