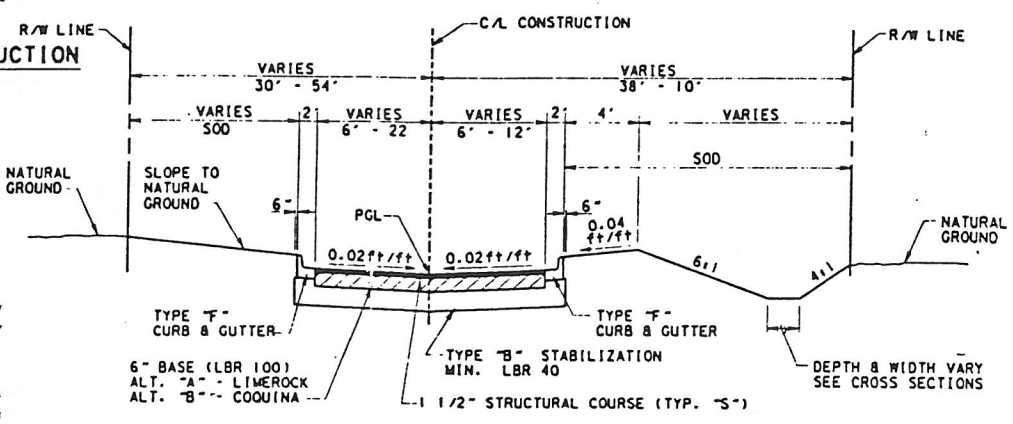
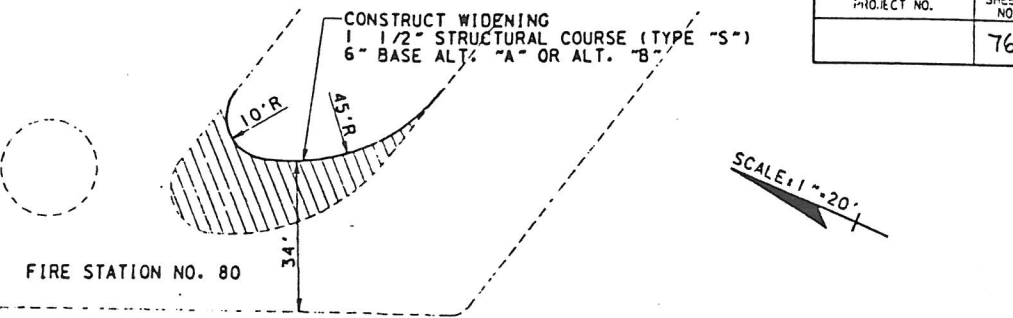
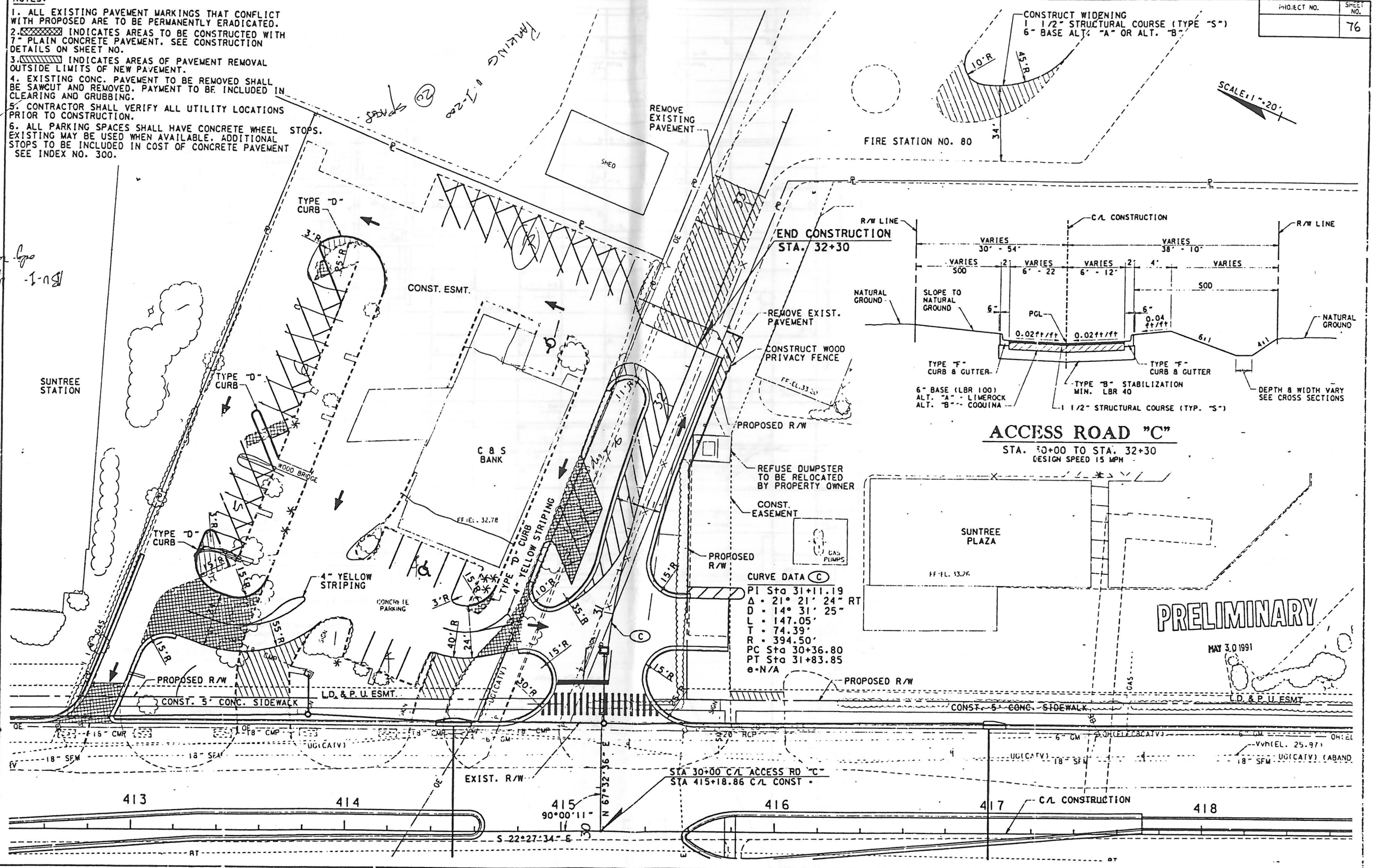


- NOTES:**
1. ALL EXISTING PAVEMENT MARKINGS THAT CONFLICT WITH PROPOSED ARE TO BE PERMANENTLY ERADICATED.
 2. [Hatched pattern] INDICATES AREAS TO BE CONSTRUCTED WITH 7" PLAIN CONCRETE PAVEMENT. SEE CONSTRUCTION DETAILS ON SHEET NO.
 3. [Cross-hatched pattern] INDICATES AREAS OF PAVEMENT REMOVAL OUTSIDE LIMITS OF NEW PAVEMENT.
 4. EXISTING CONC. PAVEMENT TO BE REMOVED SHALL BE SAWCUT AND REMOVED. PAYMENT TO BE INCLUDED IN CLEARING AND GRUBBING.
 5. CONTRACTOR SHALL VERIFY ALL UTILITY LOCATIONS PRIOR TO CONSTRUCTION.
 6. ALL PARKING SPACES SHALL HAVE CONCRETE WHEEL STOPS. EXISTING MAY BE USED WHEN AVAILABLE. ADDITIONAL STOPS TO BE INCLUDED IN COST OF CONCRETE PAVEMENT SEE INDEX NO. 300.

North & S.E. 1/4
35' HT
S. side prop.
only - Road is south
BU-1



CURVE DATA (C)
 PI Sta 31+11.19
 Δ = 21° 21' 24" RT
 D = 14' 31' 25"
 L = 147.05'
 T = 74.39'
 R = 394.50'
 PC Sta 30+36.80
 PT Sta 31+83.85
 e = N/A

PRELIMINARY
 MAY 3, 1991

REVISIONS		REVISIONS	
DATE	BY	DATE	BY

PBSJ POST, BUCKLEY, SCHUM & JERNIGAN
 ENGINEERING - PLANNING - ARCHITECTURE

DESIGNED BY: T.S.K.
 CHECKED BY: J.D.F.
 SUPERVISED BY: DARRELL A. NANCE, P.E.

WICKHAM ROAD WIDENING
 BREVARD COUNTY, FLORIDA

CONSTRUCTION DETAIL
ACCESS ROAD "C"