

**Former Ace Hardware
1006 S. Harris Street, Sandersville GA 31082**



Lot Size: 5.04 Acres

Size: 27,672 sq. feet

Built: 1950 +/- & remodeled in 1977 & 1992

Frontage: 255'

Zoning: I-2 Heavy Industrial

Parking: 86 spaces

Utilities: All available

Notes: Ceiling height is 18', 2 curb cuts for access, sprinkler system.
Billboard is not part of property.

~~Sale Price: \$670,000~~

REDUCED PRICE:

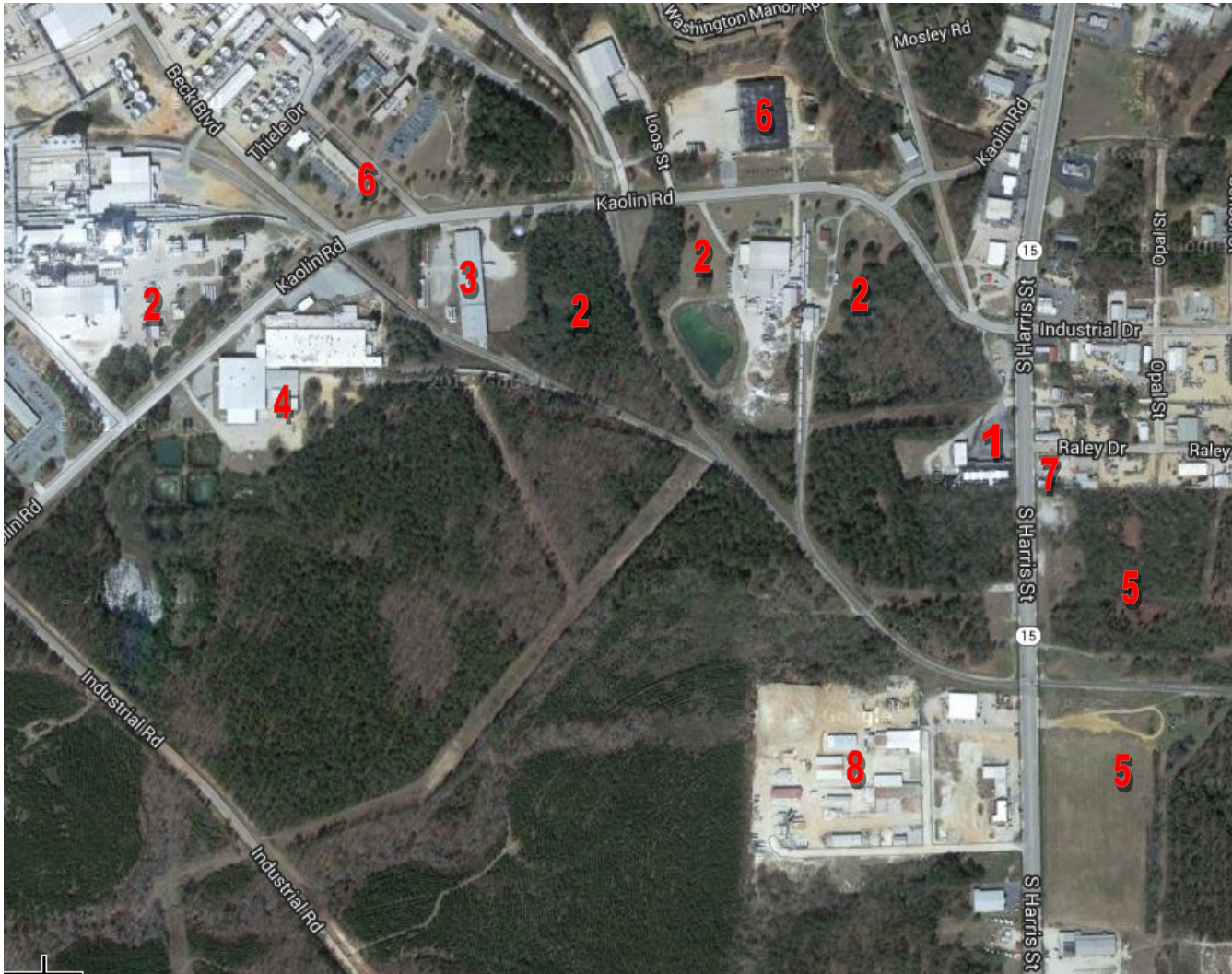
\$225,000

Contact Trip Wilhoit, CCIM, ALC or Patty Burns, CCIM, ALC 478-746-9421

trip@fickling.com or patty@fickling.com

See detailed property information at www.Fickling.com

Former Ace Hardware 1006 S. Harris Street, Sandersville GA 31082



1. SITE
2. Imery Clays
3. Prentiss Incorporated
4. Sanga Corporation

5. Sandersville Railroad Company
6. Thiele Kaolin Company
7. Washington County Machine Shop
8. Warehouses

Contact Trip Wilhoit, CCIM, ALC or Patty Burns, CCIM, ALC 478-746-9421
trip@fickling.com or patty@fickling.com
See detailed property information at www.Fickling.com