

# 1220 CAMP AVENUE MOUNT DORA, FLORIDA



FOR SALE  
11,552 SF±



## PROPERTY FEATURES

- Excellent location near S.R. 44 and S.R. 46
- Total square feet: 11,552 SF±
- Office square feet: 1,900 SF ±
- Air conditioned warehouse: 1,900 ±
- Ambient warehouse: 7,752 SF ±
- Three phase electric
- Four (4) 10' x 12' grade
- Four (4) 12' x 14' grade
- Skylights
- Zoning: M-1

## BUILDING FEATURES

TOTAL SQUARE FEET	11,552 SF±
SALE TYPE	Industrial Condo
SALE PRICE	\$530,000 or \$45.88/SF
PARKING	Ample



For more information, please contact:

**JARED BONSHIRE**  
Associate Director  
Industrial Brokerage Services  
Direct - (407) 541.4414  
Mobile - (407) 617.9193  
[jared.bonshire@cushwake.com](mailto:jared.bonshire@cushwake.com)

**DAVID PEREZ**  
Senior Associate  
Industrial Brokerage Services  
Direct - (407) 541.4435  
Mobile - (407) 595.6917  
[david.perez@cushwake.com](mailto:david.perez@cushwake.com)

**LEE MORRIS, CCIM SIOR, LEED AP**  
Director  
Industrial Brokerage Services  
Direct - (407) 541.4405  
Mobile - (407) 782.8212  
[lee.morris@cushwake.com](mailto:lee.morris@cushwake.com)

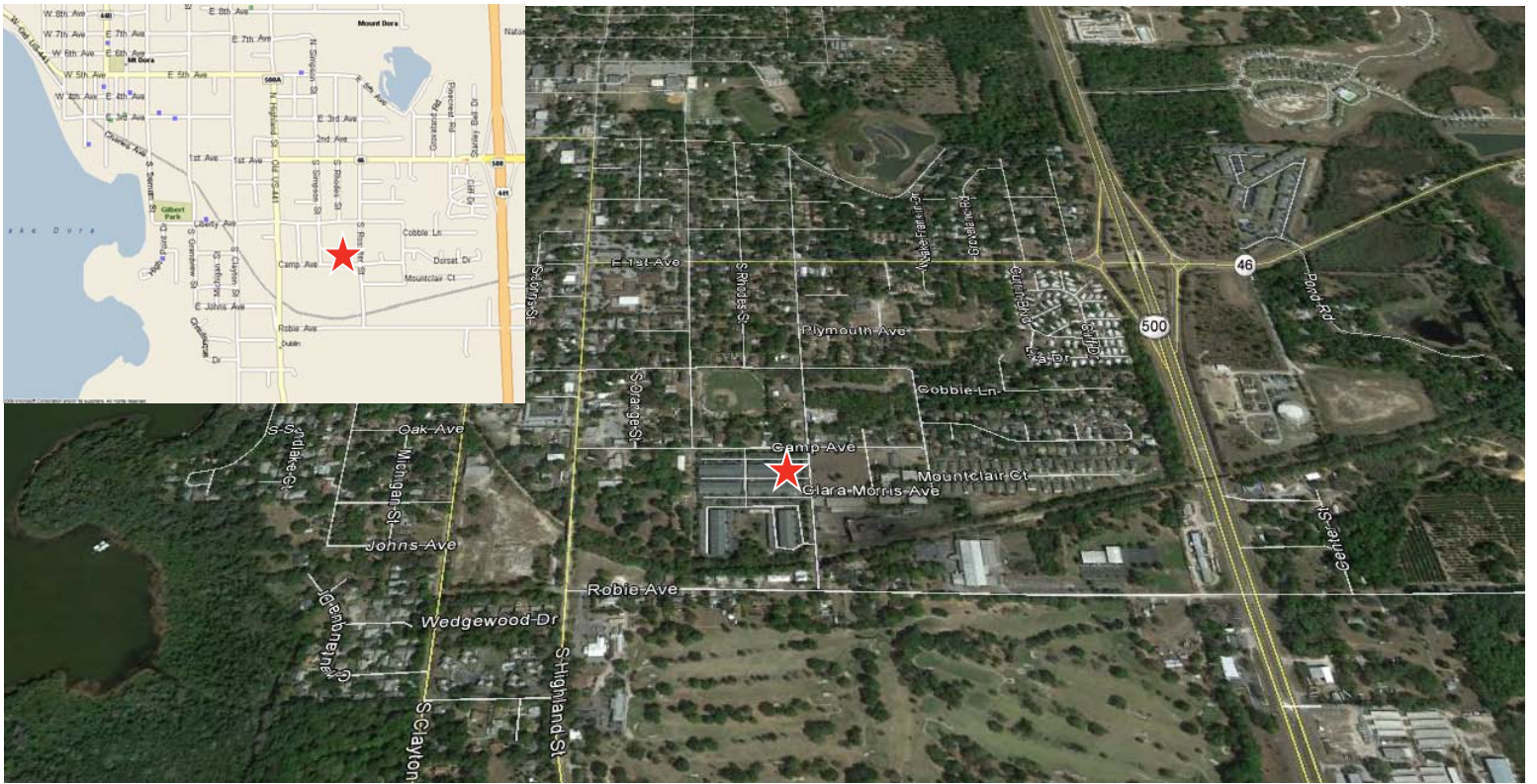
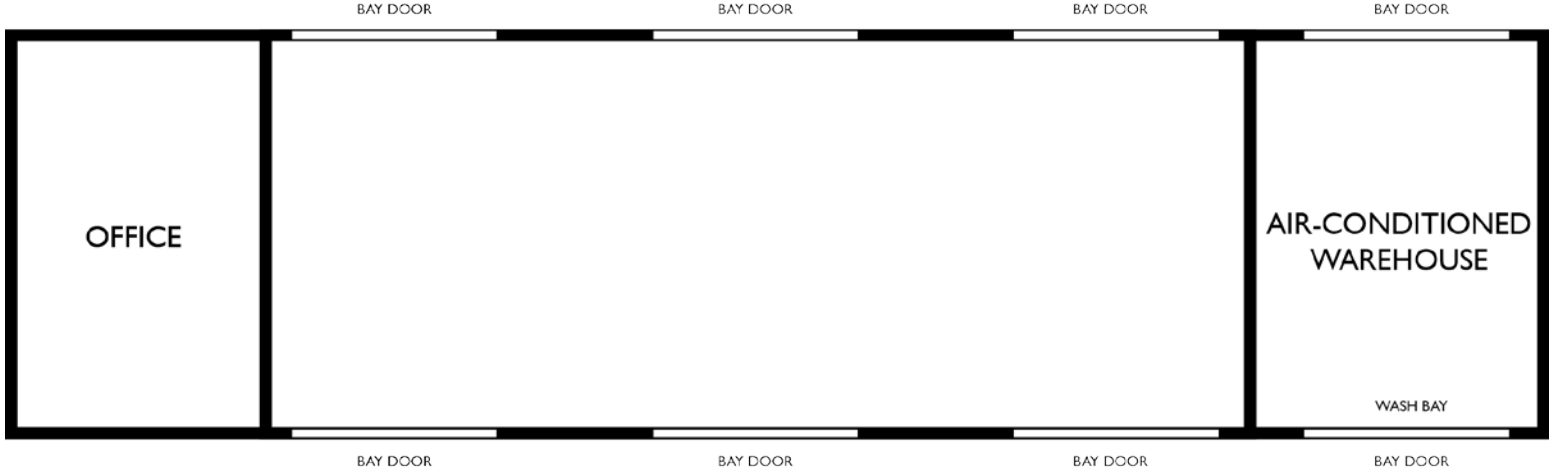
**CUSHMAN & WAKEFIELD OF FLORIDA, INC.**  
800 North Magnolia Avenue  
Suite 450  
Orlando, Florida 32803  
[www.cushmanwakefield.com](http://www.cushmanwakefield.com)

The depiction in the included photograph of any person, entity, sign, logo or property, other than Cushman & Wakefield's (C&W) client and the property offered by C&W, is incidental only, and is not intended to connote any affiliation, connection, association, sponsorship or approval by or between that which is incidentally depicted and C&W or its client. This listing shall not be deemed an offer to lease, sublease or sell such property; and, in the event of any transaction for such property, no commission shall be earned by or payable to any cooperating broker except if otherwise provided pursuant to the express terms, rates and conditions of C&W's agreement with its principal, if, as and when such commission (if any) is actually received from such principal. (A copy of the rates and conditions referred to above with respect to this property is available upon request.)

# 1120 CAMP AVE, MOUNT DORA, FLORIDA

## FOR SALE

11,552± SF  
AVAILABLE



### Disclaimer

"Neither the Owner (Bank of America, NA), nor any of their respective officers, agents or principals has made or will make any representations or warranties, expressed or implied as to the accuracy or completeness of the Offering Memorandum or any of the contents, and no legal commitment or obligation shall arise by reason of this Offering Memorandum or the Contents. By accepting or accessing information applicable to the Property, the user agrees that the owner of the Property, including its affiliates, or agents and/or Cushman & Wakefield of Florida, accept no responsibility for errors or omissions in any such Property related information, whether now or hereafter obtained (collectively, the "Property Information"). The Property Information is subject to errors, omissions, changes and other conditions, withdrawal without notice, and to any special listing conditions nor or hereafter imposed, and is not to be relied upon without Owner's prior written permission. Owner accepts no, and expressly disclaims any, duty to update or revise the Property Information even if it becomes aware of an inaccuracy and/or omission.

For more information, please contact:

**JARED BONSHIRE**  
Associate Director  
Industrial Brokerage Services  
Direct - (407) 541.4414  
Mobile - (407) 617.9193  
[jared.bonshire@cushwake.com](mailto:jared.bonshire@cushwake.com)

**DAVID PEREZ**  
Senior Associate  
Industrial Brokerage Services  
Direct - (407) 541.4435  
Mobile - (407) 595.6917  
[david.perez@cushwake.com](mailto:david.perez@cushwake.com)

**LEE MORRIS, CCIM SIOR, LEED AP**  
Director  
Industrial Brokerage Services  
Direct - (407) 541.4405  
Mobile - (407) 782.8212  
[lee.morris@cushwake.com](mailto:lee.morris@cushwake.com)

**CUSHMAN & WAKEFIELD OF FLORIDA, INC.**  
800 North Magnolia Avenue  
Suite 450  
Orlando, Florida 32803  
[www.cushmanwakefield.com](http://www.cushmanwakefield.com)

The depiction in the included photograph of any person, entity, sign, logo or property, other than Cushman & Wakefield's (C&W) client and the property offered by C&W, is incidental only, and is not intended to connote any affiliation, connection, association, sponsorship or approval by or between that which is incidentally depicted and C&W or its client. This listing shall not be deemed an offer to lease, sublease or sell such property; and, in the event of any transaction for such property, no commission shall be earned by or payable to any cooperating broker except if otherwise provided pursuant to the express terms, rates and conditions of C&W's agreement with its principal, if, as and when such commission (if any) is actually received from such principal. (A copy of the rates and conditions referred to above with respect to this property is available upon request.)