

Gotha / Windermere Development Land

9949 8th Street, Gotha, Florida 34734

Bank Owned

Property Details

- 11.31± gross acres
- Zoning: R-CE-C (Residential Country Estate)
- FLU: RS 1/1 (1 DU / acre)
- 3-mile Pop / HH Income: 56,276 / \$97,511
- Utilities available
- Parcel ID: 33-22-28-3104-01-170
- 2013 RE Taxes: \$10,748
- Price: \$620,000

Property Overview

Infill location near Windermere, 1.5 miles south of SR 50 off of Hempel Ave in Gotha, Orange County, FL.

Previously approved for an 8-lot subdivision. Property is offered AS-IS.



Contact Information

Paul Hoffman
paul.hoffman@cbcworldwide.com
Phone: (407) 571-5556



NRT

www.cbcworldwide.com

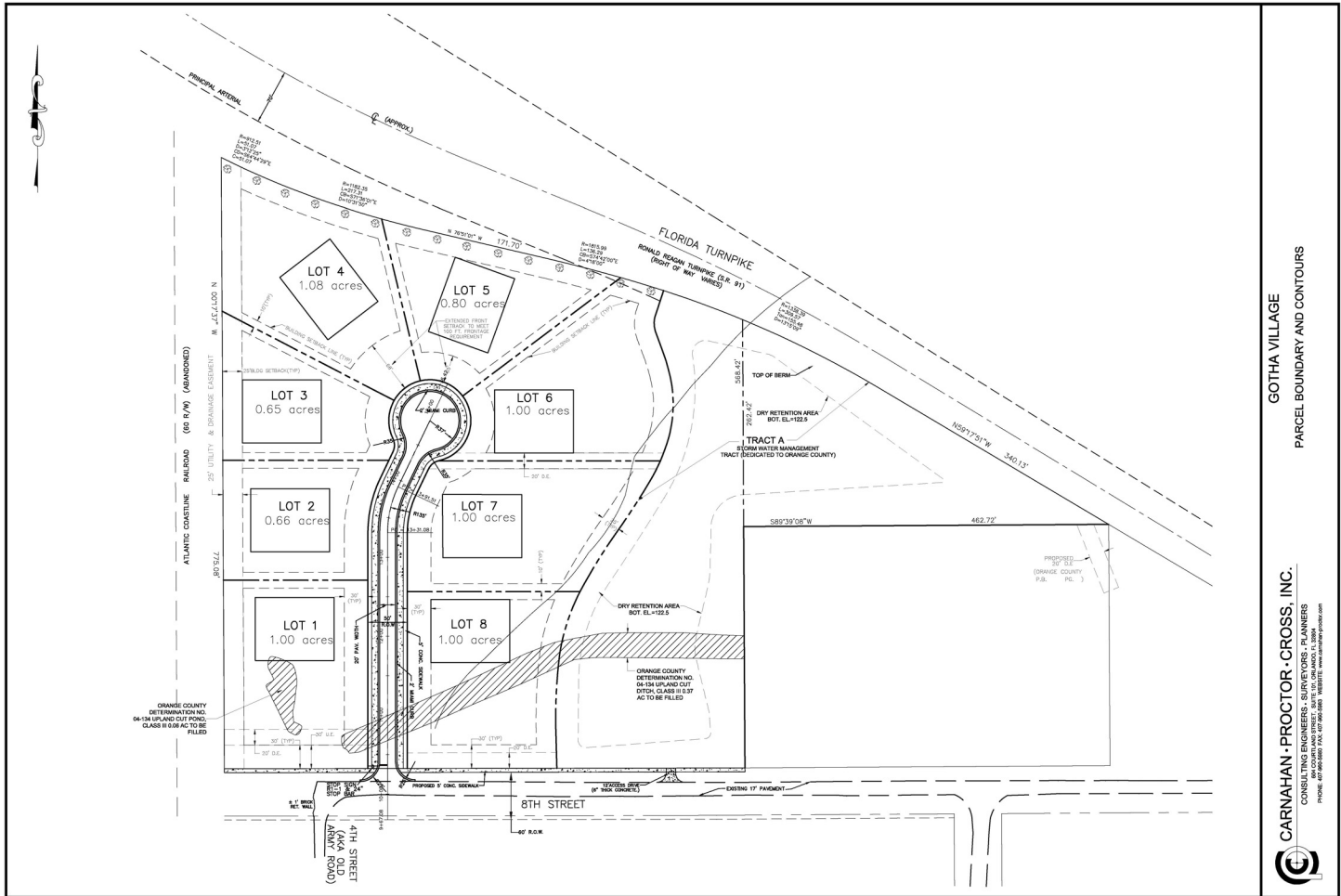
901 N Lake Destiny Drive, Suite 110
Maitland, Florida 32751
(407) 539-1000

Gotha / Windermere Development Land

9949 8th Street, Gotha, Florida 34734

Bank Owned

Conceptual



GOTHA VILLAGE
 PARCEL BOUNDARY AND CONTOURS
 CARNAHAN • PROCTOR • CROSS, INC.
 CONSULTING ENGINEERS, SURVEYORS, PLANNERS
 10000 WINDERMERE DRIVE, SUITE 100, WINDERMERE, FLORIDA 32786
 PHONE: 407-555-5555 FAX: 407-555-5556 WEBSITE: WWW.CAPROCTOR.COM



Contact Information

Paul Hoffman
 paul.hoffman@cbcworldwide.com
 Phone: (407) 571-5556



NRT

All information contained herein has been obtained from sources deemed reliable. However, no warranty or guarantee is made as to the accuracy of the information. CBC is agent for Seller.

www.cbcworldwide.com

901 N Lake Destiny Drive, Suite 110
 Maitland, Florida 32751
 (407) 539-1000