

Professional/Medical Office Condo For Sale

Emerald Hills Executive Plaza II Office Condominiums

4651 Sheridan Street, Suite 355, Hollywood, Florida 33021



PROPERTY HIGHLIGHTS:

- 1,499 SF of Professional/Medical Office Condo in Upscale Suburban Emerald Hills
- Five Large Exam/Treatment Rooms or Offices, Plus 1 Executive Office
- Reception Area, Waiting Room and File/Break Room and Lab Area
- Upgrades to Suite Include Granite Countertops, Crown Moldings and Laminate Wood Floors
- Beautiful Building Renovations Include Hallways, Lobby, Bathrooms and Elevators
- Ample Parking
- Adjacent to Area Restaurants and Shopping
- Move-in Condition
- Offered at \$160.00 PSF (\$239,840)



Call Us For a Property Tour!

Brenner Real Estate Group: Fort Lauderdale
1500 W. Cypress Creek Road, Suite 409 | Fort Lauderdale, FL 33309
Phone: 954.596.5555 | Fax: 954.596.5556

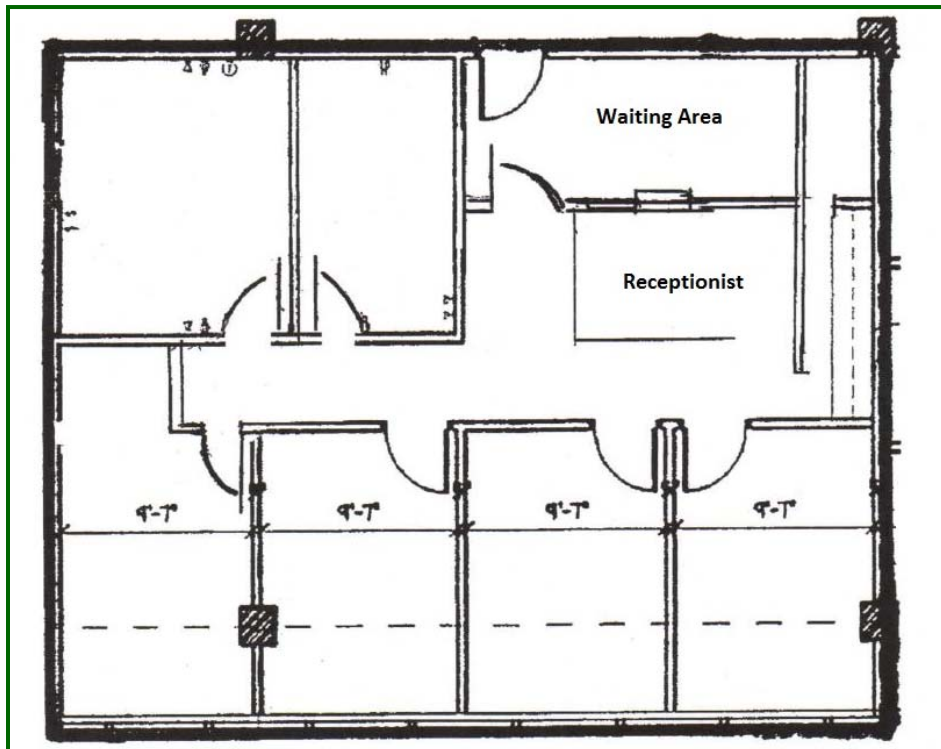
For additional information contact:

Michael Eisner, CCIM ~ Vice President
Phone: 954.596.5521 Cell: 305.542.0571
Email: meisner@breg.net



Emerald Hills Executive Plaza II Office Condominiums

4651 Sheridan Street, Suite 355, Hollywood, Florida 33021



Brenner Real Estate Group: Fort Lauderdale
1500 W. Cypress Creek Road, Suite 409 | Fort Lauderdale, FL 33309
Phone: 954.596.5555 | Fax: 954.596.5556

For additional information contact:

Michael Eisner, CCIM ~ Vice President
Phone: 954.596.5521 Cell: 305.542.0571
Email: meisner@breg.net

