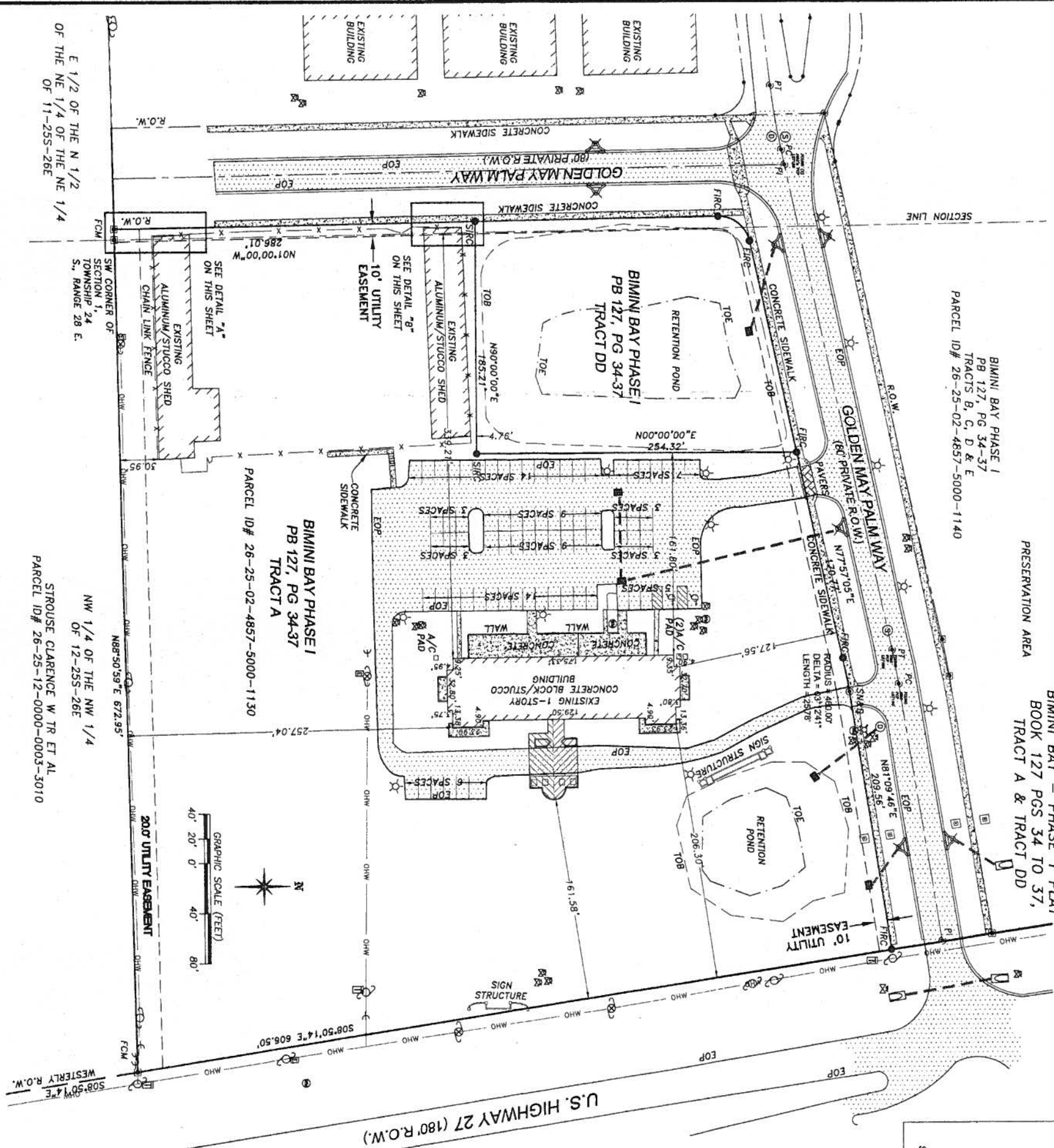


LEGAL DESCRIPTION:

BIMINI BAY - PHASE 1 PLAT  
BOOK 127 PGS 34 TO 37,  
TRACT A & TRACT DD

BIMINI BAY PHASE I  
PB 127, PG 34-37  
TRACTS B, C, D & E  
PARCEL ID# 26-25-02-4857-5000-1140

PRESERVATION AREA

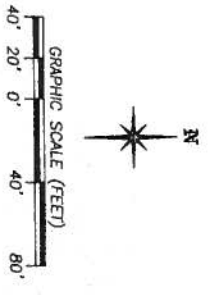


E 1/2 OF THE N 1/2  
OF THE NE 1/4 OF THE NE 1/4  
OF 11-255-26E

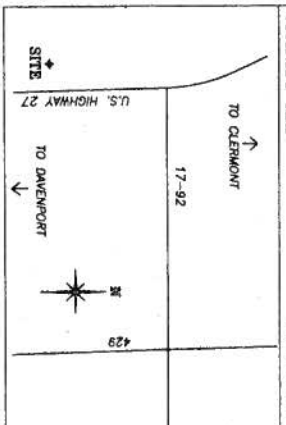
SW CORNER OF  
SECTION 1,  
TOWNSHIP 24  
S., RANGE 28 E.

NW 1/4 OF THE NW 1/4  
OF 12-255-26E  
STROUSE CLARENCE W TR ET AL  
PARCEL ID# 26-25-12-0000-0003-3010

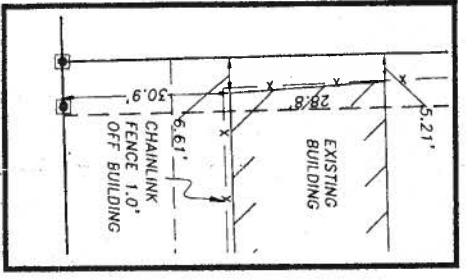
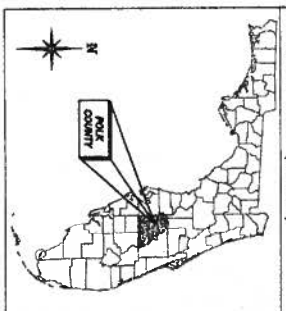
BIMINI BAY PHASE I  
PB 127, PG 34-37  
TRACT A  
PARCEL ID# 26-25-02-4857-5000-1130



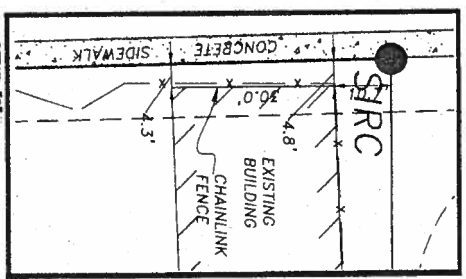
VICINITY MAP NOT TO SCALE



VICINITY MAP (STATE)



DETAIL "A"  
NOT TO SCALE



DETAIL "B"  
NOT TO SCALE

**GENERAL NOTES:**  
1. ALL UTILITIES SHOWN ARE FROM OPERATED RECORDS OF ADJACENT OWNERS AND FIELD SURVEY. THE SURVEYOR HAS CONDUCTED VISUAL INSPECTIONS AND FROM SURFACE MARKERS OF UTILITY COMPANIES WHICH WERE CONDUCTED BY SUBSEQUENT STATE ENGINEERS OF FLORIDA, INC. (1-800-433-4770) TO DETERMINE THE LOCATION OF ANY UTILITIES SHOWN. THE SURVEYOR HAS NOT LOCATED ANY UTILITIES SHOWN. THE SURVEYOR HAS NOT CONDUCTED ANY FIELD SURVEY TO DETERMINE THE LOCATION OF ANY UTILITIES SHOWN. THE SURVEYOR HAS NOT CONDUCTED ANY FIELD SURVEY TO DETERMINE THE LOCATION OF ANY UTILITIES SHOWN. THE SURVEYOR HAS NOT CONDUCTED ANY FIELD SURVEY TO DETERMINE THE LOCATION OF ANY UTILITIES SHOWN.

To Island Club Resort, Anderson Bank, Attorney  
Title Insurance Fund, Inc. and Lawyers Service  
Group, P. A.

This is to certify that this map or plat and the survey on which it is based were made accordance with the "Minimum Standard Detail Requirements for ALTA/ACSM Land Title Surveys," jointly established and adopted by ALTA and NSPS in 2005. Pursuant to the Accuracy Standards as adopted by ALTA and NSPS and in effect on the date of this certification, undersigned further certifies that my professional opinion, as a land surveyor registered in the State of Florida, the Relative Positional Accuracy of this survey does not exceed that which is specified therein.

07-03-08  
Final Date

Joseph W. Biskic, P.S.M.  
Professional Surveyor and Mapper  
State of Florida Reg. No. 5910

**Benchmark Design Services Inc.**  
237 Riley Lane, Lakeland, FL 33804  
Tel: (888) 544-8810  
Fax: (888) 544-8810  
License # 113780

**BOUNDARY SURVEY**

DATE	7/1/08	08-01	08-01
BY	CS	CS	CS
SCALE	1" = 20.5'	1" = 20.5'	1" = 20.5'

PROJECT: BIMINI BAY PHASE I  
LOCATION: U.S. Highway 27, Polk County, Florida

08,009-844



