

**92 Residential Lots
Regency Park Subdivision
Hiram, Paulding County, GA**



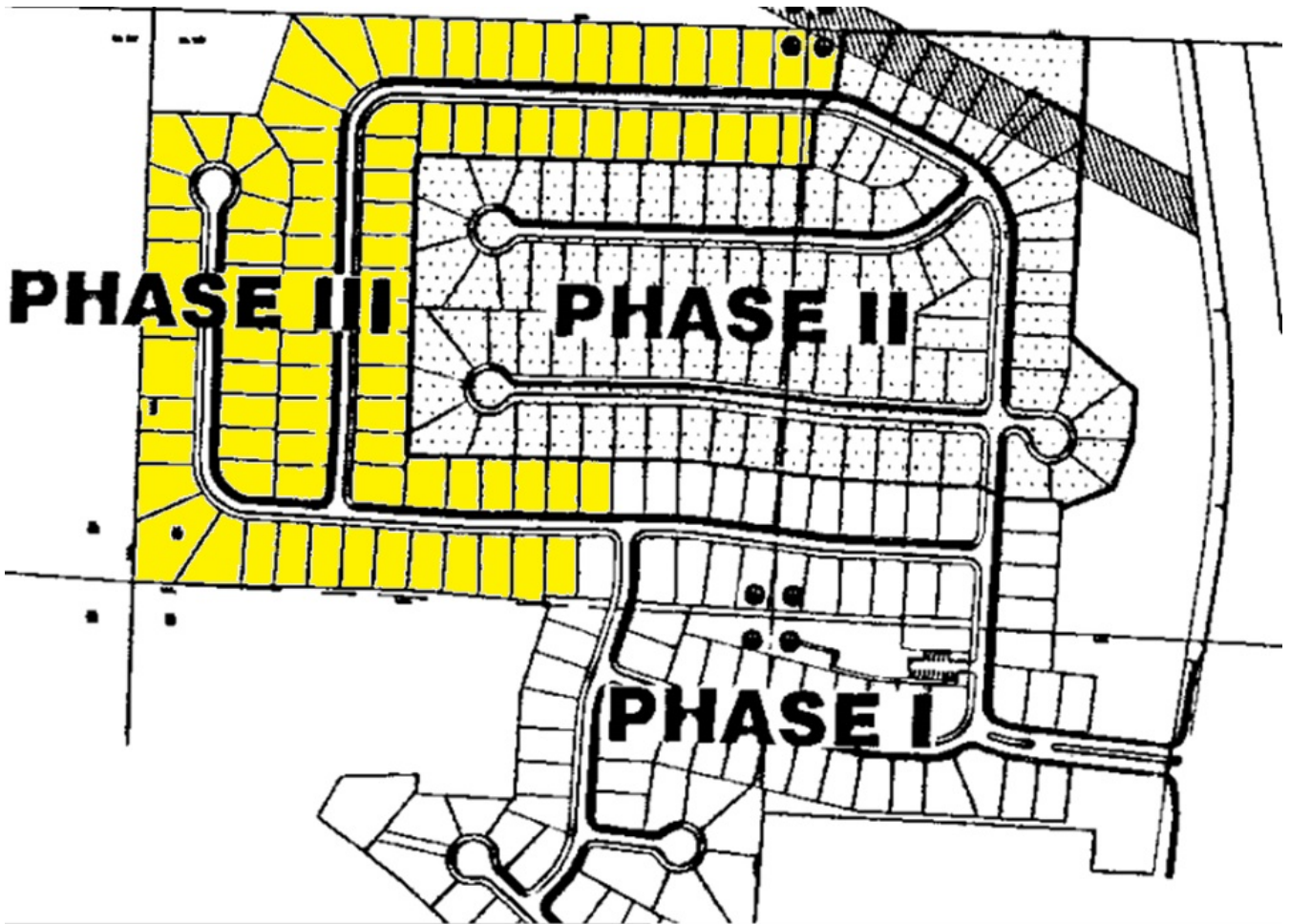
**92 Residential Lots
Bulk Asking Price - \$12,500 per lot**

Contact

Mark Moore
404.886.0552

Jared Young
404.889.6878

Property Overview



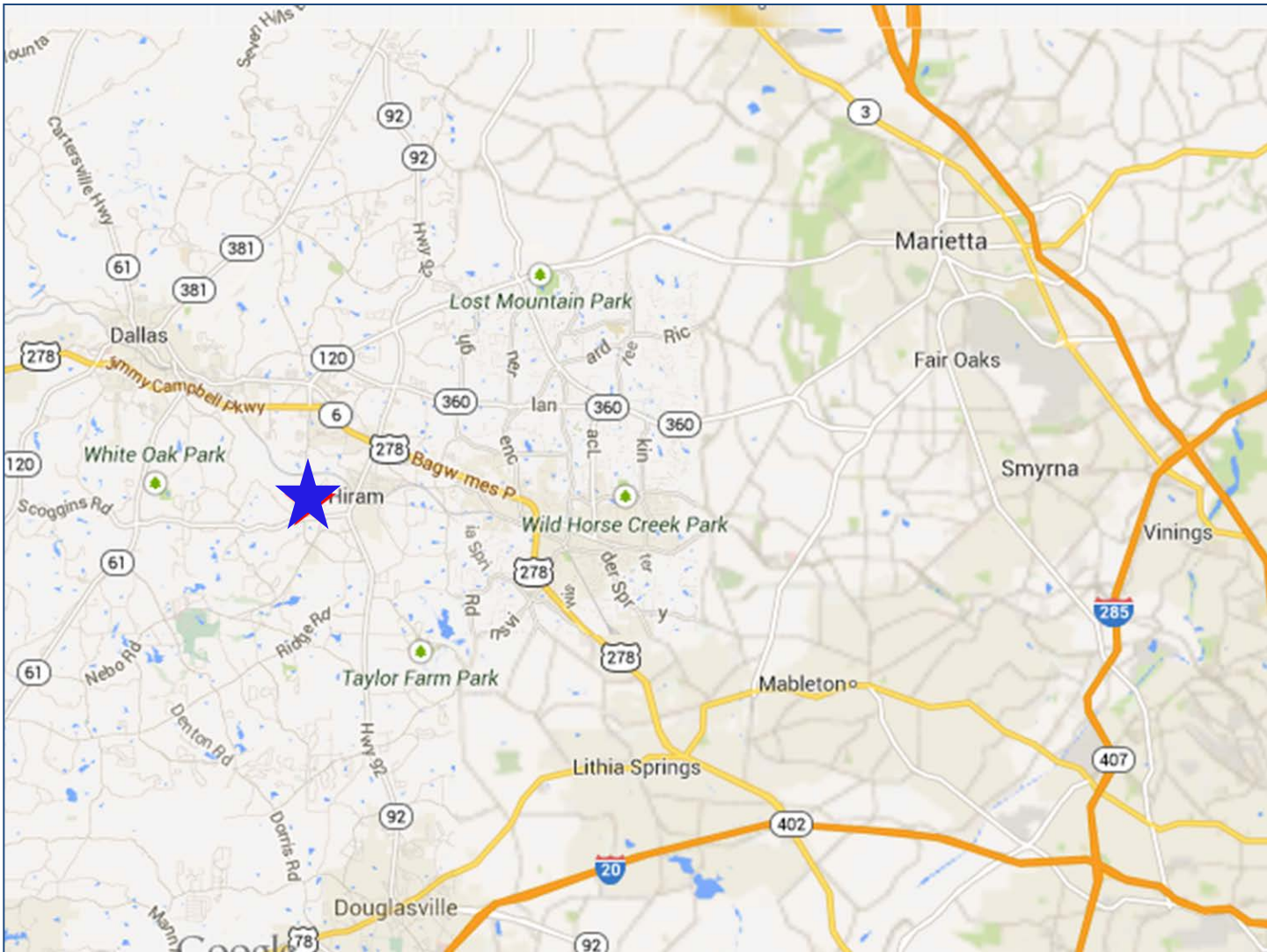
92 single family residential lots in Regency Park subdivision
Less than 2 miles from downtown Hiram, GA in Paulding County
2013 home sales (resale) range \$140,000-160,000
Subdivision amenities include pool and tennis court
-Lots do not fall under the existing CC&Rs
-Can be annexed by subdivision with owner & HOA approval

Contact

Mark Moore
404.886.0552

Jared Young
404.889.6878

Location Map

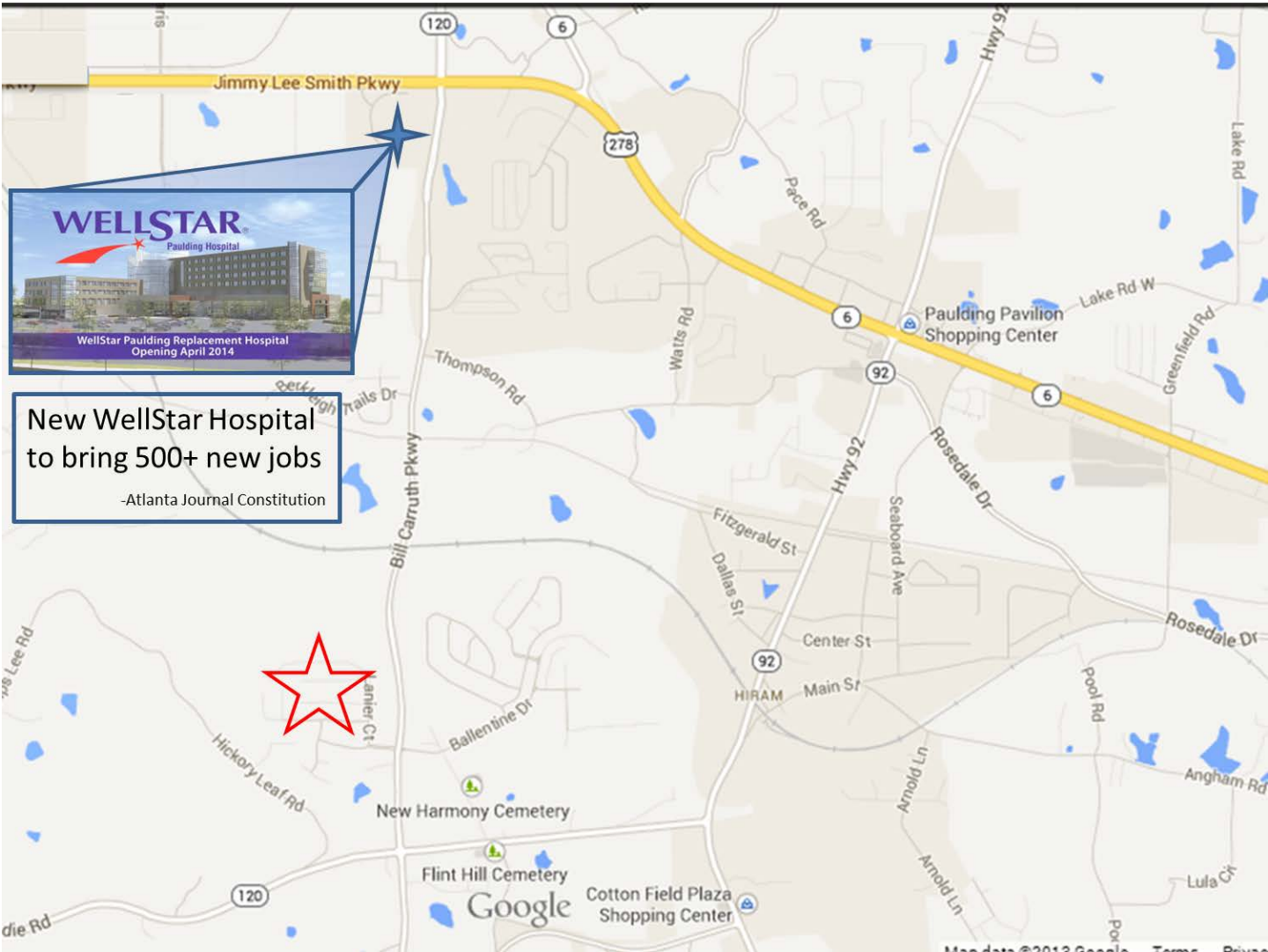


Contact

Mark Moore
404.886.0552

Jared Young
404.889.6878

Location Map

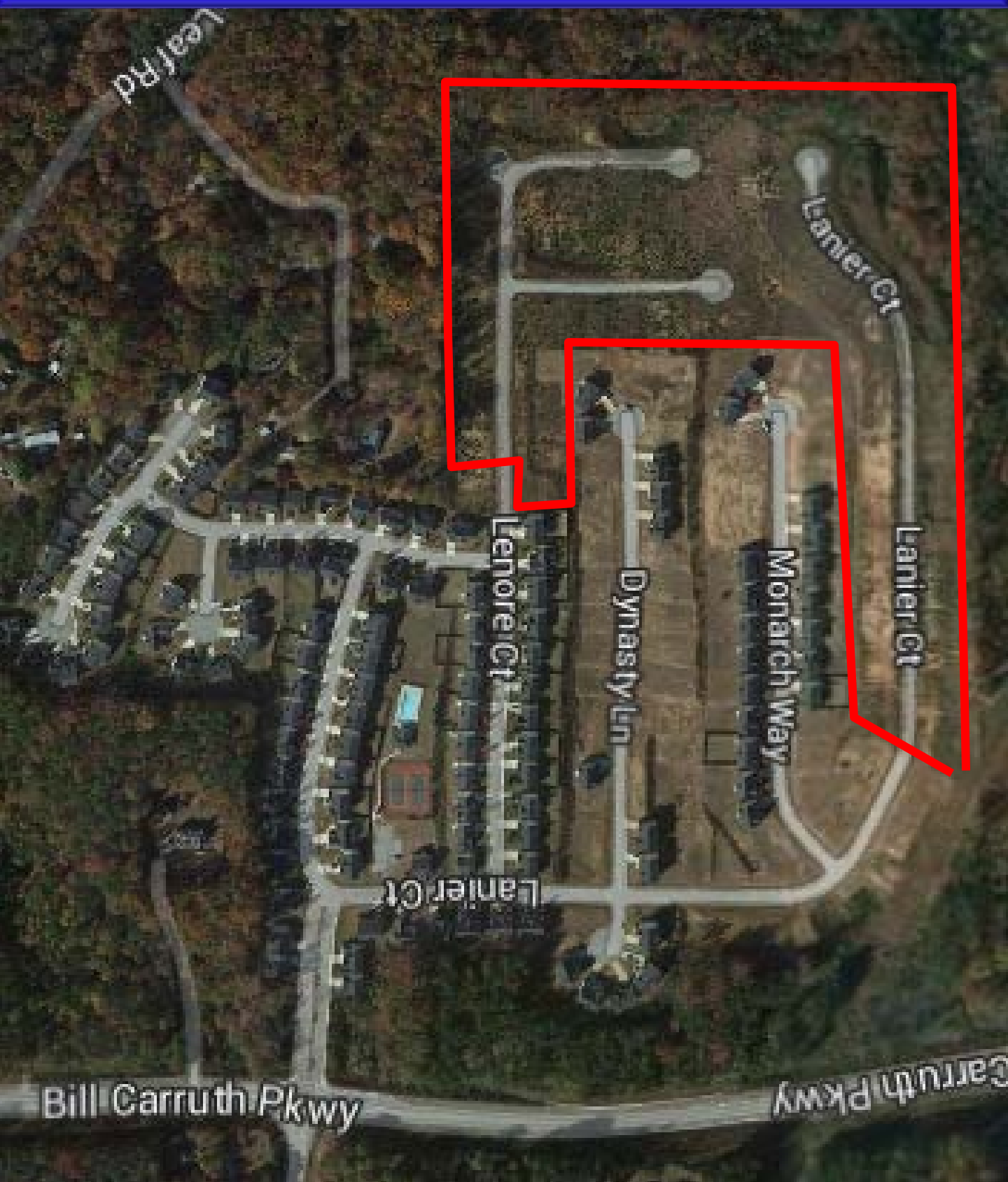


Contact

Mark Moore
404.886.0552

Jared Young
404.889.6878

Aerial Overview



Area Photographs



Entrance to Regency Park

Contact

Mark Moore
404.886.0552

Jared Young
404.889.6878

Area Photographs



Typical Product in Regency Park



Contact

Mark Moore
404.886.0552

Jared Young
404.889.6878

- 1. 1/2" = 100' (PLAN)
- 2. 1/4" = 100' (SECTION)
- 3. 1/8" = 100' (SECTION)
- 4. 1/16" = 100' (SECTION)
- 5. 1/32" = 100' (SECTION)
- 6. 1/64" = 100' (SECTION)
- 7. 1/128" = 100' (SECTION)
- 8. 1/256" = 100' (SECTION)
- 9. 1/512" = 100' (SECTION)
- 10. 1/1024" = 100' (SECTION)
- 11. 1/2048" = 100' (SECTION)
- 12. 1/4096" = 100' (SECTION)
- 13. 1/8192" = 100' (SECTION)
- 14. 1/16384" = 100' (SECTION)
- 15. 1/32768" = 100' (SECTION)
- 16. 1/65536" = 100' (SECTION)
- 17. 1/131072" = 100' (SECTION)
- 18. 1/262144" = 100' (SECTION)
- 19. 1/524288" = 100' (SECTION)
- 20. 1/1048576" = 100' (SECTION)
- 21. 1/2097152" = 100' (SECTION)
- 22. 1/4194304" = 100' (SECTION)
- 23. 1/8388608" = 100' (SECTION)
- 24. 1/16777216" = 100' (SECTION)
- 25. 1/33554432" = 100' (SECTION)
- 26. 1/67108864" = 100' (SECTION)
- 27. 1/134217728" = 100' (SECTION)
- 28. 1/268435456" = 100' (SECTION)
- 29. 1/536870912" = 100' (SECTION)
- 30. 1/1073741824" = 100' (SECTION)
- 31. 1/2147483648" = 100' (SECTION)
- 32. 1/4294967296" = 100' (SECTION)
- 33. 1/8589934592" = 100' (SECTION)
- 34. 1/17179869184" = 100' (SECTION)
- 35. 1/34359738368" = 100' (SECTION)
- 36. 1/68719476736" = 100' (SECTION)
- 37. 1/137438953472" = 100' (SECTION)
- 38. 1/274877906944" = 100' (SECTION)
- 39. 1/549755813888" = 100' (SECTION)
- 40. 1/1099511627776" = 100' (SECTION)
- 41. 1/2199023255552" = 100' (SECTION)
- 42. 1/4398046511104" = 100' (SECTION)
- 43. 1/8796093022208" = 100' (SECTION)
- 44. 1/17592186444416" = 100' (SECTION)
- 45. 1/35184372888832" = 100' (SECTION)
- 46. 1/70368745777664" = 100' (SECTION)
- 47. 1/140737491555328" = 100' (SECTION)
- 48. 1/281474983110656" = 100' (SECTION)
- 49. 1/562949966221312" = 100' (SECTION)
- 50. 1/1125899932422624" = 100' (SECTION)
- 51. 1/2251799864845248" = 100' (SECTION)
- 52. 1/4503599729690496" = 100' (SECTION)
- 53. 1/9007199459380992" = 100' (SECTION)
- 54. 1/18014398918761984" = 100' (SECTION)
- 55. 1/36028797837523968" = 100' (SECTION)
- 56. 1/72057595675047936" = 100' (SECTION)
- 57. 1/144115191350095872" = 100' (SECTION)
- 58. 1/288230382700191744" = 100' (SECTION)
- 59. 1/576460765400383488" = 100' (SECTION)
- 60. 1/1152921530800766976" = 100' (SECTION)
- 61. 1/2305843061601533952" = 100' (SECTION)
- 62. 1/4611686123203067904" = 100' (SECTION)
- 63. 1/9223372246406135808" = 100' (SECTION)
- 64. 1/18446744492812271616" = 100' (SECTION)
- 65. 1/36893488985624543232" = 100' (SECTION)
- 66. 1/73786977971249086464" = 100' (SECTION)
- 67. 1/147573959842498128928" = 100' (SECTION)
- 68. 1/295147919684996257856" = 100' (SECTION)
- 69. 1/590295839369992515712" = 100' (SECTION)
- 70. 1/1180591678739985131424" = 100' (SECTION)
- 71. 1/2361183357479970262848" = 100' (SECTION)
- 72. 1/4722366714959940525696" = 100' (SECTION)
- 73. 1/94447334299198810513984" = 100' (SECTION)
- 74. 1/18889466499398722027968" = 100' (SECTION)
- 75. 1/37778932998797444055936" = 100' (SECTION)
- 76. 1/75557865997594888111872" = 100' (SECTION)
- 77. 1/151115731995189776223744" = 100' (SECTION)
- 78. 1/302231463990379552447488" = 100' (SECTION)
- 79. 1/604462927980759104894976" = 100' (SECTION)
- 80. 1/120892585596151820978992" = 100' (SECTION)
- 81. 1/241785171192303641957984" = 100' (SECTION)
- 82. 1/483570342384607283915968" = 100' (SECTION)
- 83. 1/967140684769214567831936" = 100' (SECTION)
- 84. 1/1934281369538429135663872" = 100' (SECTION)
- 85. 1/3868562739076858271327744" = 100' (SECTION)
- 86. 1/7737125478153716542655488" = 100' (SECTION)
- 87. 1/15474250956307433085310976" = 100' (SECTION)
- 88. 1/30948501912614866170621952" = 100' (SECTION)
- 89. 1/6189700382522973234124304" = 100' (SECTION)
- 90. 1/12379400765445946468248608" = 100' (SECTION)
- 91. 1/24758801530891892936492216" = 100' (SECTION)
- 92. 1/49517603061783777872984432" = 100' (SECTION)
- 93. 1/99035206135567555745968864" = 100' (SECTION)
- 94. 1/19807041227135111549193728" = 100' (SECTION)
- 95. 1/39614082454270223098387456" = 100' (SECTION)
- 96. 1/79228164908540446196774912" = 100' (SECTION)
- 97. 1/158456329817088923993548824" = 100' (SECTION)
- 98. 1/316912659634177847987097488" = 100' (SECTION)
- 99. 1/633825319268355695974194976" = 100' (SECTION)
- 100. 1/126765063853671139194838992" = 100' (SECTION)
- 101. 1/253530127707342278389677984" = 100' (SECTION)
- 102. 1/507060255414684556779355968" = 100' (SECTION)
- 103. 1/10141205108293691135558119376" = 100' (SECTION)
- 104. 1/2028241021658738227111127744" = 100' (SECTION)
- 105. 1/405648204331747645422225488" = 100' (SECTION)
- 106. 1/811296408663495290844450976" = 100' (SECTION)
- 107. 1/1622592937327990581688901952" = 100' (SECTION)
- 108. 1/3245185874655981163377803904" = 100' (SECTION)
- 109. 1/649037174931196232675567808" = 100' (SECTION)
- 110. 1/12980743496223324533511356736" = 100' (SECTION)
- 111. 1/2596148698444664906702271353472" = 100' (SECTION)
- 112. 1/5192297396889329813404542706848" = 100' (SECTION)
- 113. 1/1038459473777865962680908541376" = 100' (SECTION)
- 114. 1/2076918947555731925361817082752" = 100' (SECTION)
- 115. 1/415383789511146385072363416544" = 100' (SECTION)
- 116. 1/830767579022292770144726833088" = 100' (SECTION)
- 117. 1/166153515804485544028845366656" = 100' (SECTION)
- 118. 1/332307031608971088057690733312" = 100' (SECTION)
- 119. 1/664614063217942176115538146624" = 100' (SECTION)
- 120. 1/1329228126355884322311116732288" = 100' (SECTION)
- 121. 1/2658456252711768644622233464576" = 100' (SECTION)
- 122. 1/5316912505423537289244466929152" = 100' (SECTION)
- 123. 1/10633825010847074578488938578304" = 100' (SECTION)
- 124. 1/21267650021694149156977877156608" = 100' (SECTION)
- 125. 1/425353000433882983139557553133216" = 100' (SECTION)
- 126. 1/850706000867765966279115106266432" = 100' (SECTION)
- 127. 1/1701412001735531932558222222528864" = 100' (SECTION)
- 128. 1/3402824003471063865116444444457728" = 100' (SECTION)
- 129. 1/68056480069421277302328888889544544" = 100' (SECTION)
- 130. 1/136112960138842554604477777779089088" = 100' (SECTION)
- 131. 1/27222592027768510920895555555817817728" = 100' (SECTION)
- 132. 1/54445184055537021841791111111635643456" = 100' (SECTION)
- 133. 1/108890368111074036735582222222528864" = 100' (SECTION)
- 134. 1/21778073622214807347111644444457728" = 100' (SECTION)
- 135. 1/43556147244429614714222888889544544" = 100' (SECTION)
- 136. 1/87112294488859229428447777779089088" = 100' (SECTION)
- 137. 1/1742245897777188588495555555817817728" = 100' (SECTION)
- 138. 1/348449179555437117119111111635643456" = 100' (SECTION)
- 139. 1/696898359110743544238222222528864" = 100' (SECTION)
- 140. 1/13937967182148708847744444457728" = 100' (SECTION)
- 141. 1/278759343642974176954888889544544" = 100' (SECTION)
- 142. 1/557518687285948353909777779089088" = 100' (SECTION)
- 143. 1/1115037374571896707819555555817817728" = 100' (SECTION)
- 144. 1/223007474914393415563911111635643456" = 100' (SECTION)
- 145. 1/446014949828786831127272222528864" = 100' (SECTION)
- 146. 1/89202989965757366225454444457728" = 100' (SECTION)
- 147. 1/178405979931547132450908889544544" = 100' (SECTION)
- 148. 1/3568119598630942649018177779089088" = 100' (SECTION)
- 149. 1/713623919726188453803635555817817728" = 100' (SECTION)
- 150. 1/142724785452377307606727111635643456" = 100' (SECTION)
- 151. 1/28544957090475461533345444457728" = 100' (SECTION)
- 152. 1/570899141809509230666908889544544" = 100' (SECTION)
- 153. 1/1141798237191018413338177779089088" = 100' (SECTION)
- 154. 1/22835964743820368266735555817817728" = 100' (SECTION)
- 155. 1/45671929487640736533547111635643456" = 100' (SECTION)
- 156. 1/91343858975281473067092222528864" = 100' (SECTION)
- 157. 1/18268771790562894613418444457728" = 100' (SECTION)
- 158. 1/365375435811257892268368889544544" = 100' (SECTION)
- 159. 1/730750871622515784536737779089088" = 100' (SECTION)
- 160. 1/146150174325031157075475555817817728" = 100' (SECTION)
- 161. 1/2923003486500623141509111635643456" = 100' (SECTION)
- 162. 1/58460069730012462830182222528864" = 100' (SECTION)
- 163. 1/11692013946002492566036444457728" = 100' (SECTION)
- 164. 1/2338402789200498513207288889544544" = 100' (SECTION)
- 165. 1/467680557840099702640577779089088" = 100' (SECTION)
- 166. 1/935361115680199405280115555817817728" = 100' (SECTION)
- 167. 1/18707223137603988105603311635643456" = 100' (SECTION)
- 168. 1/3741444627520797621120066222528864" = 100' (SECTION)
- 169. 1/7482889255041595242240134444457728" = 100' (SECTION)
- 170. 1/14965778510083190444800268889544544" = 100' (SECTION)
- 171. 1/2993155702016380896960537779089088" = 100' (SECTION)
- 172. 1/598631140403276179392107555817817728" = 100' (SECTION)
- 173. 1/119726220806554358788421511635643456" = 100' (SECTION)
- 174. 1/239452441613108717557682222528864" = 100' (SECTION)
- 175. 1/47890488322621743111536444457728" = 100' (SECTION)
- 176. 1/9578097664524348622307288889544544" = 100' (SECTION)
- 177. 1/191561952904868972446457779089088" = 100' (SECTION)
- 178. 1/383123905809737944892915555817817728" = 100' (SECTION)
- 179. 1/7662478116194758897858311635643456" = 100' (SECTION)
- 180. 1/1532495623238951779571666222528864" = 100' (SECTION)
- 181. 1/306499124647790355914332444457728" = 100' (SECTION)
- 182. 1/61299824929558071182826648889544544" = 100' (SECTION)
- 183. 1/12259964985911614256533297779089088" = 100' (SECTION)
- 184. 1/2451992997182322851311067555817817728" = 100' (SECTION)
- 185. 1/490398599436464570262213311635643456" = 100' (SECTION)
- 186. 1/980797198872929140524426444457728" = 100' (SECTION)
- 187. 1/19615943977458582804888889544544" = 100' (SECTION)
- 188. 1/3923188795491716560977779089088" = 100' (SECTION)
- 189. 1/784637759098343312195555817817728" = 100' (SECTION)
- 190. 1/156927551819668624439111635643456" = 100' (SECTION)
- 191. 1/3138551036393372488782222528864" = 100' (SECTION)
- 192. 1/6277102072786744977564444457728" = 100' (SECTION)
- 193. 1/125542041457344899513088889544544" = 100' (SECTION)
- 194. 1/251084082914689799026177779089088" = 100' (SECTION)
- 195. 1/5021681658293795980523555817817728" = 100' (SECTION)
- 196. 1/1004336317587559196104466222528864" = 100' (SECTION)
- 197. 1/200867263517511832210892444457728" = 100' (SECTION)
- 198. 1/40173452703502366441778488889544544" = 100' (SECTION)
- 199. 1/80346905407004732883557779089088" = 100' (SECTION)
- 200. 1/16069381081401465767111555817817728" = 100' (SECTION)
- 201. 1/3213876216280293153342222528864" = 100' (SECTION)
- 202. 1/6427752432560586306684444457728" = 100' (SECTION)
- 203. 1/128555048651211726133688889544544" = 100' (SECTION)
- 204. 1/25711009730242345226737779089088" = 100' (SECTION)
- 205. 1/5142201946048469045347555817817728" = 100' (SECTION)
- 206. 1/1028440389209693809069511635643456" = 100' (SECTION)
- 207. 1/2056880778419387618139111635643456" = 100' (SECTION)
- 208. 1/41137615568387752362782222528864" = 100' (SECTION)
- 209. 1/82275231136775504725564444457728" = 100' (SECTION)
- 210. 1/16455046275355100945112888889544544" = 100' (SECTION)
- 211. 1/329100925507102018890257779089088" = 100' (SECTION)
- 212. 1/65820185101420437780511555817817728" = 100' (SECTION)
- 213. 1/1316403702028408755610311635643456" = 100' (SECTION)
- 214. 1/2632807404056817511220066222528864" = 100' (SECTION)
- 215. 1/526561480811363502244134444457728" = 100' (SECTION)
- 216. 1/10531229616227270448888889544544" = 100' (SECTION)
- 217. 1/21062459232454540977779089088" = 100' (SECTION)
- 218. 1/4212491846490908195555817817728" = 100' (SECTION)
- 219. 1/842498369298181631111635643456" = 100' (SECTION)
- 220. 1/16849967385736326222222528864" = 100' (SECTION)
- 221. 1/33699934771472652444444457728" = 100' (SECTION)
- 222. 1/673998695429453048888889544544" = 100' (SECTION)
- 223. 1/1347997390858906977779089088" = 100' (SECTION)
- 224. 1/269599478171781395555817817728" = 100' (SECTION)
- 225. 1/53919895634356279111635643456" = 100' (SECTION)
- 226. 1/10783979126871255822222528864" = 100' (SECTION)
- 227. 1/21567958253742511644444457728" = 100' (SECTION)
- 228. 1/431359165074850232888889544544" = 100' (SECTION)
- 229. 1/86271833014970046577779089088" = 100' (SECTION)
- 230. 1/1725436602994009311555817817728" = 100' (SECTION)
- 231. 1/34508732059880186222222528864" = 100' (SECTION)
- 232. 1/69017464119760372444444457728" = 100' (SECTION)
- 233. 1/138034922397520748888889544544" = 100' (SECTION)
- 234. 1/2760698447950414977779089088" = 100' (SECTION)
- 235. 1/552139689590082995555817817728" = 100' (SECTION)
- 236. 1/110427937918016599111635643456" = 100' (SECTION)
- 237. 1/22085587583603319822222528864" = 100' (SECTION)
- 238. 1/44171175167206639644444457728" = 100' (SECTION)
- 239. 1/883423503344132792888889544544" = 100' (SECTION)
- 240. 1/176684700668826558577779089088" = 100' (SECTION)
- 241. 1/3533694013376531171555817817728" = 100' (SECTION)
- 242. 1/706738802675306234311635643456" = 100' (SECTION)
- 243. 1/141347760535061248622222528864" = 100' (SECTION)
- 244. 1/282695521070122497244444457728" = 100' (SECTION)
- 245. 1/5653910421402449944888889544544" = 100' (SECTION)
- 246. 1/113078208428048998897779089088" = 100' (SECTION)
- 247. 1/22615641685609799779555817817728" = 100' (SECTION)
- 248. 1/452312833712195995511635643456" = 100' (SECTION)
- 249. 1/904625667424391991022222528864" = 100' (SECTION)
- 250. 1/1809251334848783982044444457728" = 100' (SECTION)
- 251. 1/36185026696975679640888889544544" = 100' (SECTION)
- 252. 1/7237005339395135928177779089088" = 100' (SECTION)
- 253. 1/144740106787902718563555817817728" = 100' (SECTION)
- 254. 1/289480213575805371126711635643456" = 100' (SECTION)
- 255. 1/5789604271517107422444444457728" = 100' (SECTION)
- 256. 1/11579208543034214848888889544544" = 100' (SECTION)
- 257. 1/23158417086068429697779089088" = 100' (SECTION)
- 258. 1/4631683417213685939555817817728" = 100' (SECTION)
- 259. 1/926336683442737187911635643456" = 100' (SECTION)
- 260. 1/1852673366885474375822222528864" = 100' (SECTION)

