

**BERKSHIRE
HATHAWAY**
HOMESERVICES

FLORIDA
PROPERTIES
GROUP

Versatile Showroom | Office | Warehouse in Prime Location!

COMMERCIAL DIVISION

1801 28th Street N, St. Petersburg, FL 33713



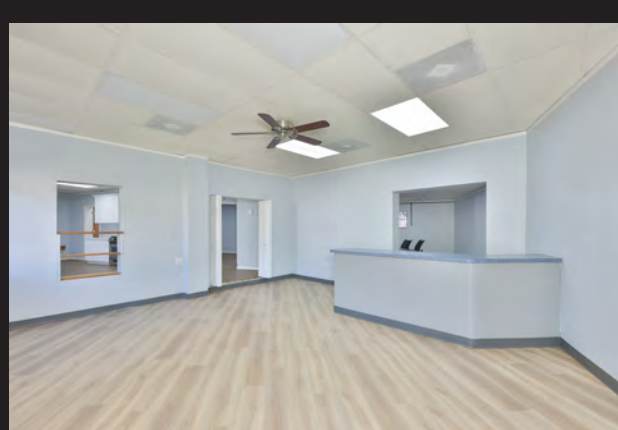
RENEE  **LANDES**
COMMERCIAL REAL ESTATE TEAM

(727) 460-4901 | Renee@ReneeLandes.com

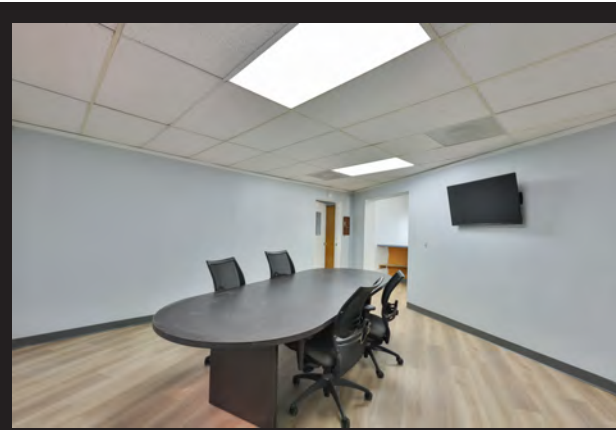
Versatile Showroom | Office | Warehouse in Prime Location!

COMMERCIAL DIVISION

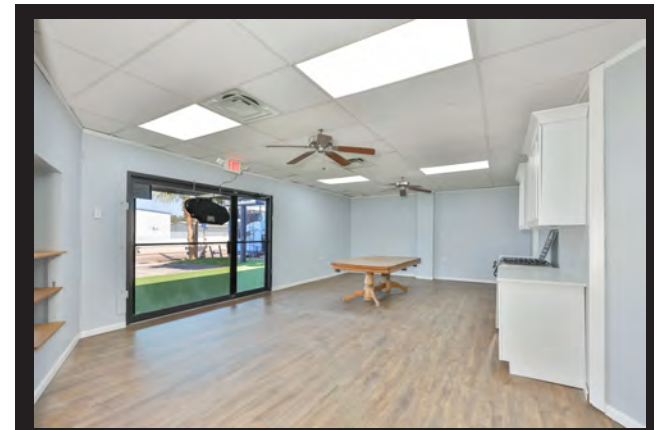
Highly Functional and Exceptionally Well-Located



Showroom Reception Area



Conference Room



Additional Showroom



Additional Showroom - 2



Large Private Office

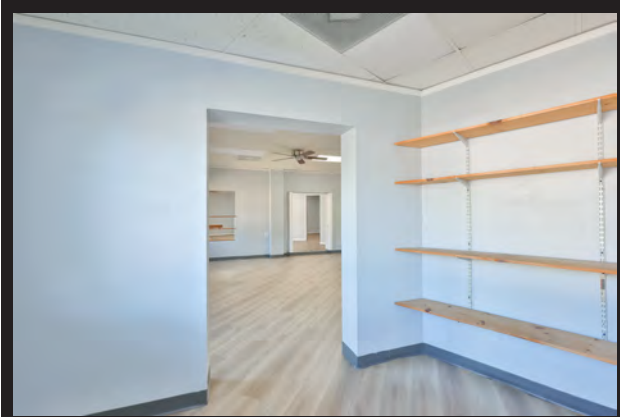


Office

Versatile Showroom | Office | Warehouse in Prime Location!

COMMERCIAL DIVISION

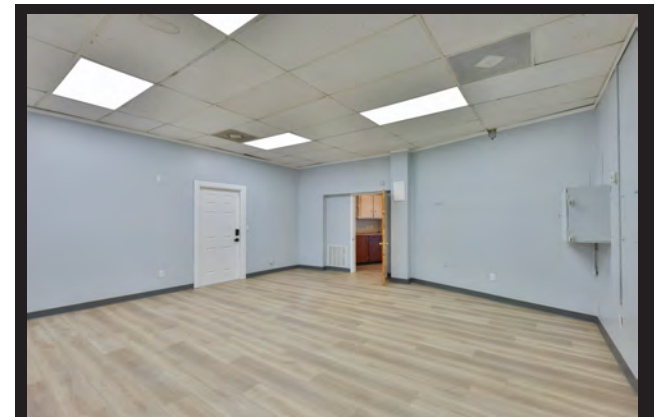
Highly Functional and Exceptionally Well-Located



Storage Area



Kitchenette



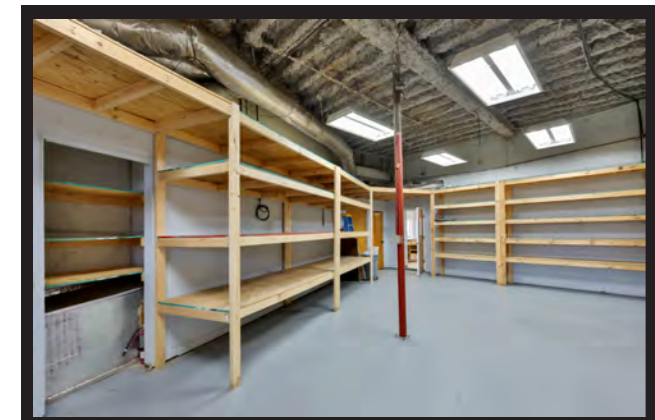
Large Office with Exterior Door



Warehouse



Warehouse - 2

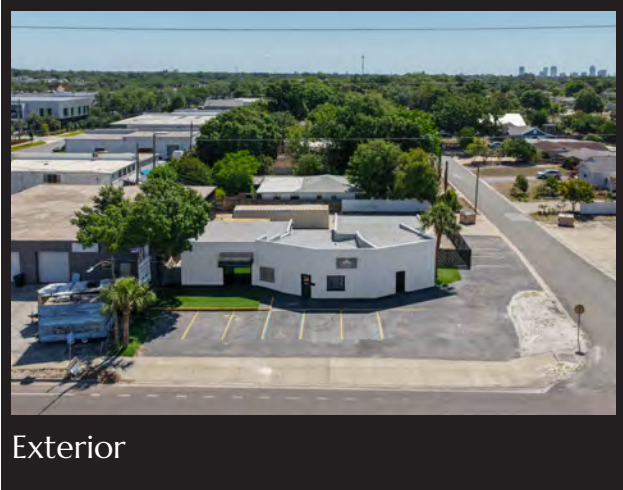


Warehouse - 3

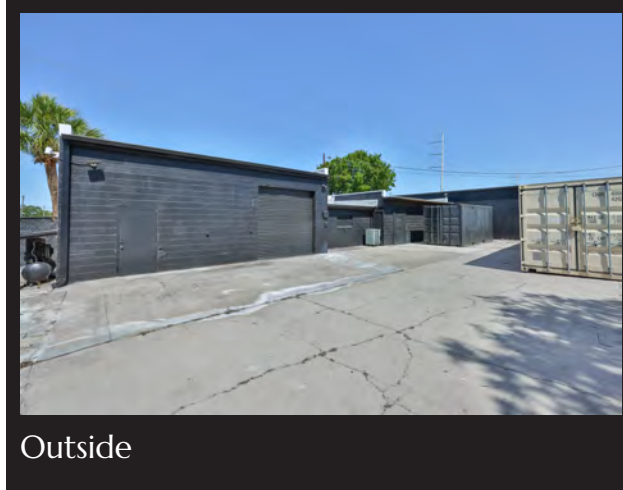
Versatile Showroom | Office | Warehouse in Prime Location!

COMMERCIAL DIVISION

Flexible, Functional, Professional Space



Exterior



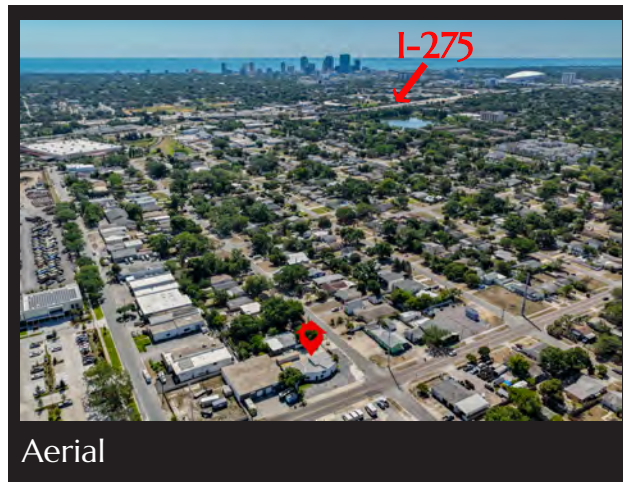
Outside



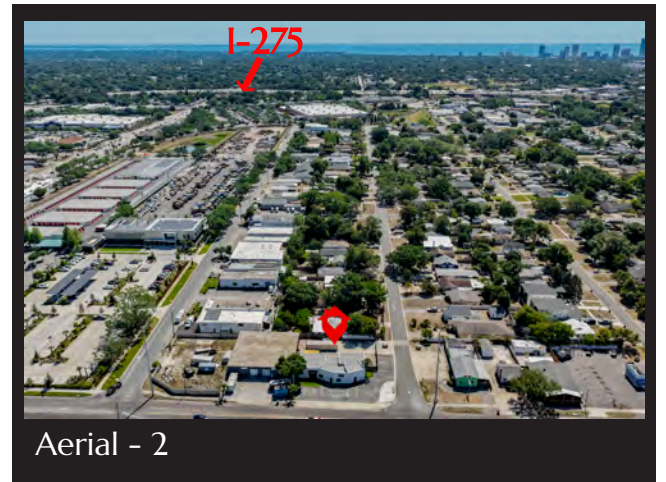
Outside Storage Area



Pylon Sign



Aerial



Aerial - 2

Convenient, Prime Location!

St. Pete–Clearwater International Airport: 11± Miles
Tampa International Airport: 18± Miles



1801 28th Street N, St. Petersburg, FL 33713

Versatile Showroom | Office | Warehouse in Prime Location!

1801 28th Street N, St. Petersburg, FL 33713

Property Information

- Prime St. Petersburg Location with Excellent Accessibility
- Flexible Layout Featuring Showroom, Offices, and Warehouse Space
- 3,174± Total SF; Built in 1947
- Multiple Private Office Areas and Large Conference Room
- Warehouse with Overhead Door for Efficient Loading and Storage
- Kitchenette, Shower, and Multiple Restrooms
- Outdoor Storage Area For Materials or Excess Parking
- Less Than 1 Mile to I-275
- PIE Airport: 11± Miles | Tampa International Airport: 18± Miles



Prime Location in St.
Petersburg with
Excellent Accessibility!

Position your business for success at 1801 28th Street N. a highly functional and exceptionally well-located commercial property in the heart of St. Petersburg. This versatile space offers a seamless blend of showroom, office, and warehouse capabilities ideal for owner-users seeking efficiency, flexibility, and a professional presence. The property was recently updated. A new roof was also installed in 2025, and a new air conditioner in 2024. Upon entry, you're welcomed by an inviting showroom/reception area. The layout flows into multiple private office areas, a spacious conference room, and expansive open areas that can be tailored to your business needs.

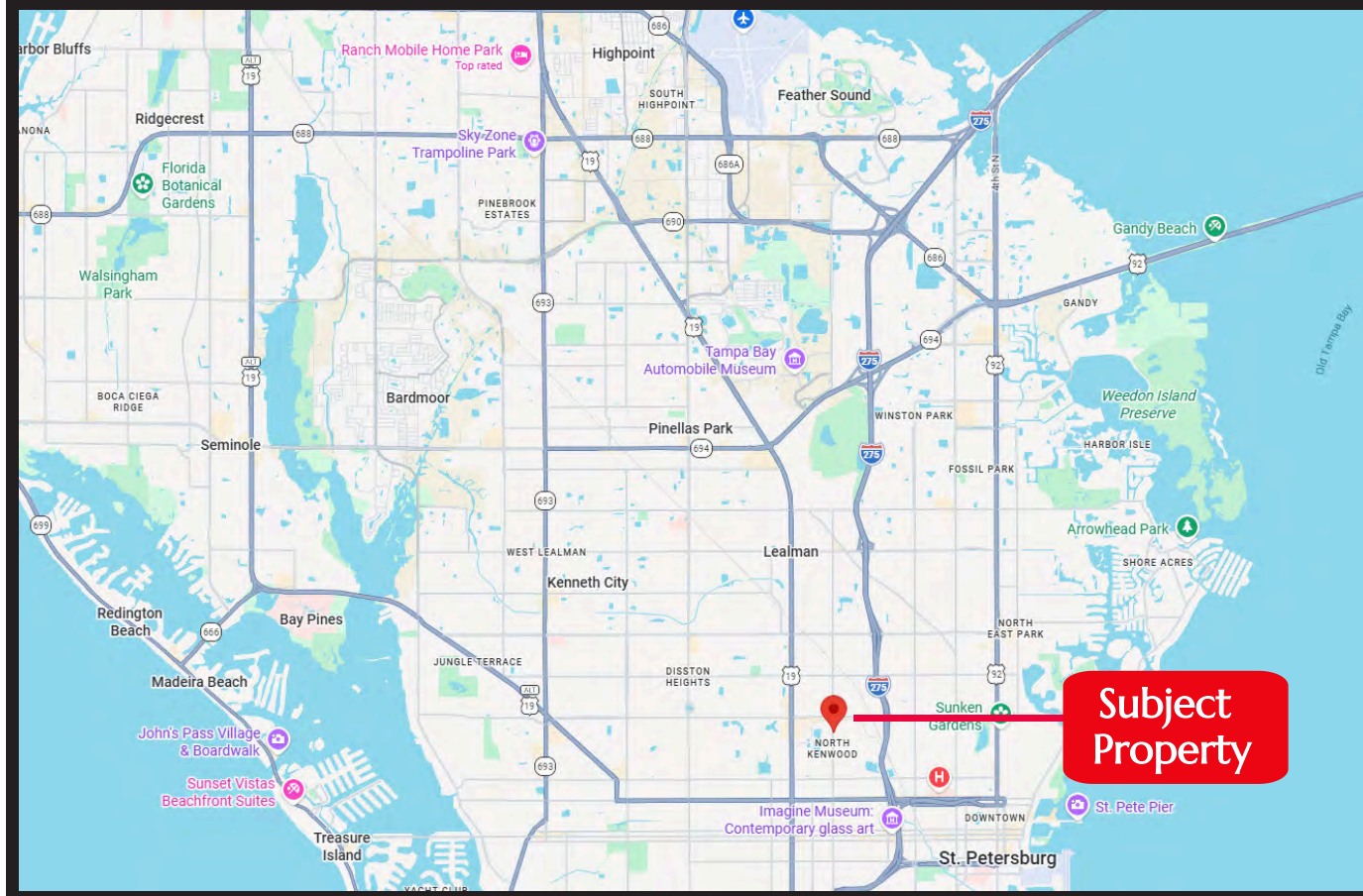
The property also features a dedicated warehouse component with an overhead door, providing easy access for deliveries, storage, or traditional industrial use. Additional amenities such as multiple restrooms, a shower, kitchenette, and outdoor storage further enhance the functionality of the space.

Whether you're in distribution, service, showroom retail, or office-based operations with storage needs, this property offers a rare combination of visibility, adaptability, and convenience in a prime location. **Priced at \$1,295,000**

Versatile Showroom | Office | Warehouse in Prime Location!

COMMERCIAL DIVISION

1801 28th Street N, St. Petersburg, FL 33713



DEMOGRAPHICS BY MILE

| | 1 MILE | 3 MILES | 5 MILES |
|------------------|----------|-----------|-----------|
| Total Population | 12,784 | 146,830 | 298,347 |
| Avg. HH Income | \$94,511 | \$101,746 | \$104,804 |
| Median Age | 42.7 | 44 | 46.1 |
| Total Households | 6,075 | 70,530 | 140,178 |

DEMOGRAPHICS BY DRIVE TIME

| | 5 MIN | 10 MIN | 15 MIN |
|------------------|----------|-----------|-----------|
| Total Population | 29,832 | 166,793 | 337,646 |
| Avg. HH Income | \$98,943 | \$101,486 | \$104,477 |
| Median Age | 42.8 | 44.1 | 45.9 |
| Total Households | 13,971 | 78,714 | 161,249 |

Versatile Showroom | Office | Warehouse in Prime Location!

1801 28th Street N, St. Petersburg, FL 33713

Contact:



Renee' Landes, CCIM, ALC

Renee@ReneeLandes.com
(727) 460-4901

RENEE'  LANDES

COMMERCIAL REAL ESTATE TEAM

**BERKSHIRE
HATHAWAY**
HOMESERVICES

FLORIDA
PROPERTIES
GROUP

COMMERCIAL DIVISION

Confidence You Can Count On!

"Renee is an expert with commercial properties - office, retail, and industrial. Highly recommend after working with her for many years!! She has a strong network and brings top tier tenant partners to properties." ~ Morgan C.

"Renee' went over & beyond our expectations. She is the most detailed & hardest working realtor I've ever worked with. Would recommend her to anyone." ~ Mary G.

"Renee was outstanding to work with. Despite a few challenges during inspections, she guided the process smoothly and kept everything on track. She was easy to reach, highly responsive, and always punctual, which made the experience seamless and stress-free. I highly recommend Renee' for her professionalism and dedication." ~ Stephanie W.

This information is from sources deemed to be reliable. We are not responsible for misstatements of facts, errors or omissions, prior sale, change of price, and/or terms or withdrawal from the market without notice. Buyer should verify all information with its' own representatives as well as state and local agencies. Brokers, please note that a variable rate commission may exist on this offering that might result in a lower commission cost to the Seller if a Buyer's broker is not involved in the transaction. ©2026 BHH Affiliates, LLC. An independently owned and operated franchisee of BHH Affiliates, LLC. Berkshire Hathaway HomeServices and the Berkshire Hathaway HomeServices symbol are registered service marks of Columbia Insurance Company, a Berkshire Hathaway affiliate. Equal Housing Opportunity.