

FOR LEASE

AMERICAN INDUSTRIAL CENTER

1000 CHARLES STREET | LONGWOOD, FL 32750



**±7,000 SF OF
AVAILABLE SPACE**
AVAILABLE NOVEMBER 1, 2026

LOCATION

American Industrial Center sits in the heart of Longwood's established industrial corridor, just off South Ronald Reagan Boulevard and strategically positioned between State Road 434 and State Road 436, two of the area's primary east-west thoroughfares. The site offers convenient connectivity to Interstate 4 (I-4) the major regional interstate linking Orlando, Sanford, and beyond as well as direct access to surrounding Seminole County markets and central Florida's broader transportation network.

CONTACT:

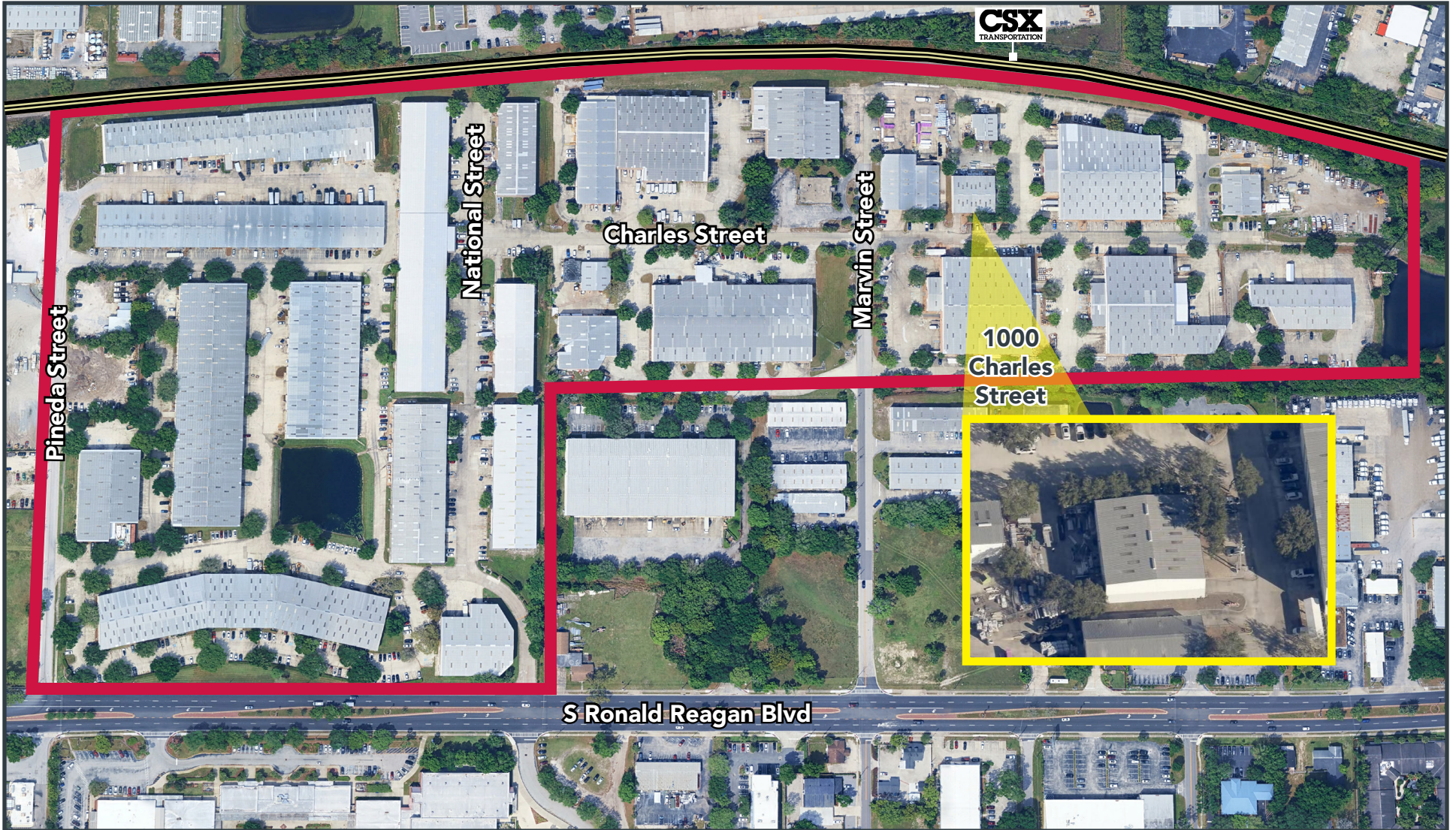
Derek Riggelman, SIOR
Senior Vice President/Principal
driggelman@lee-associates.com
D 407.456.3463

Aaron Torres
Associate
atorres@lee-associates.com
D 407.922.7632

Brady Benton
Associate
bbenton@lee-associates.com
D 863.624.1936

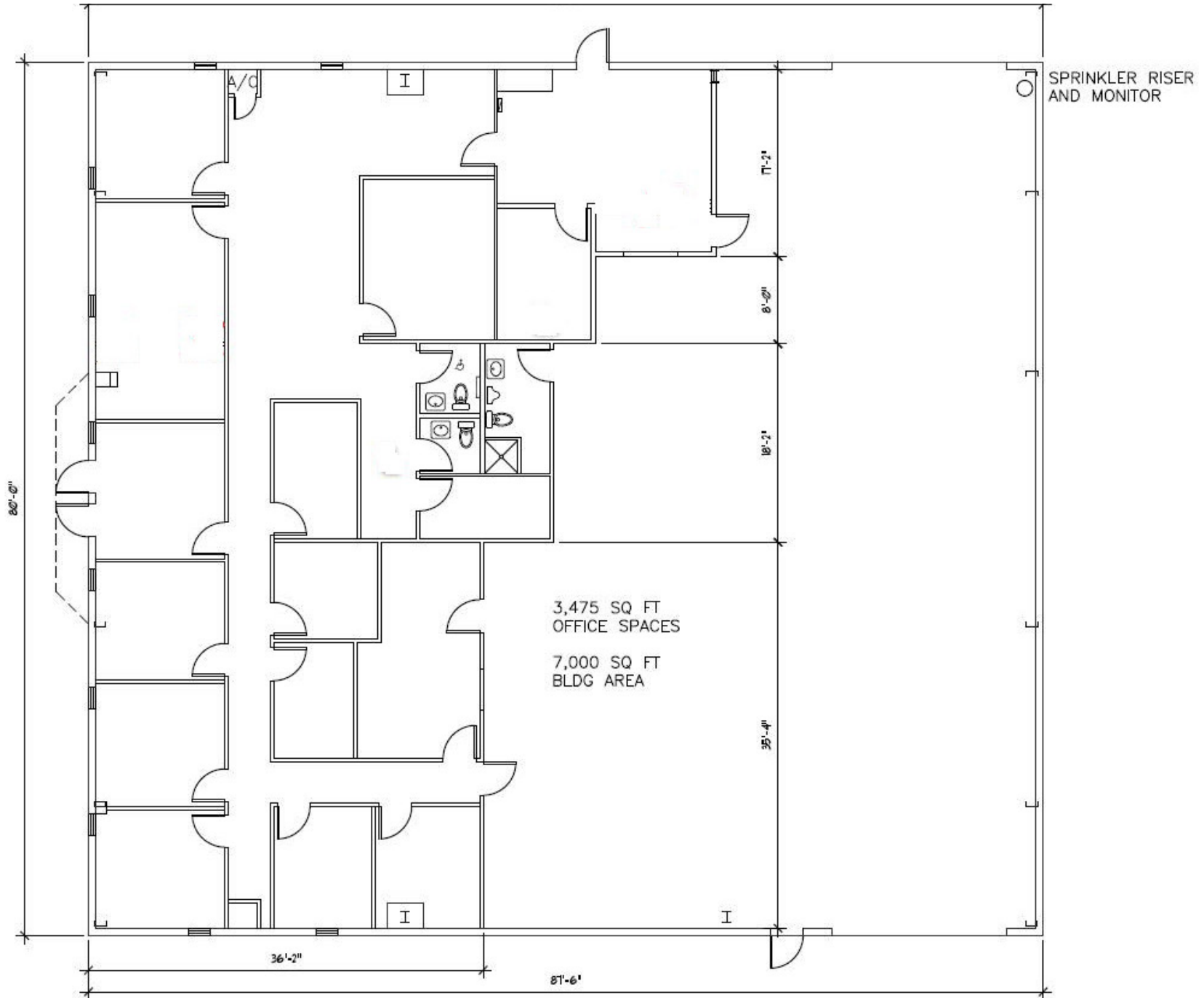
Ryan Griffith
Senior Vice President/Principal
rgriffith@lee-associates.com
D 908.208.4774

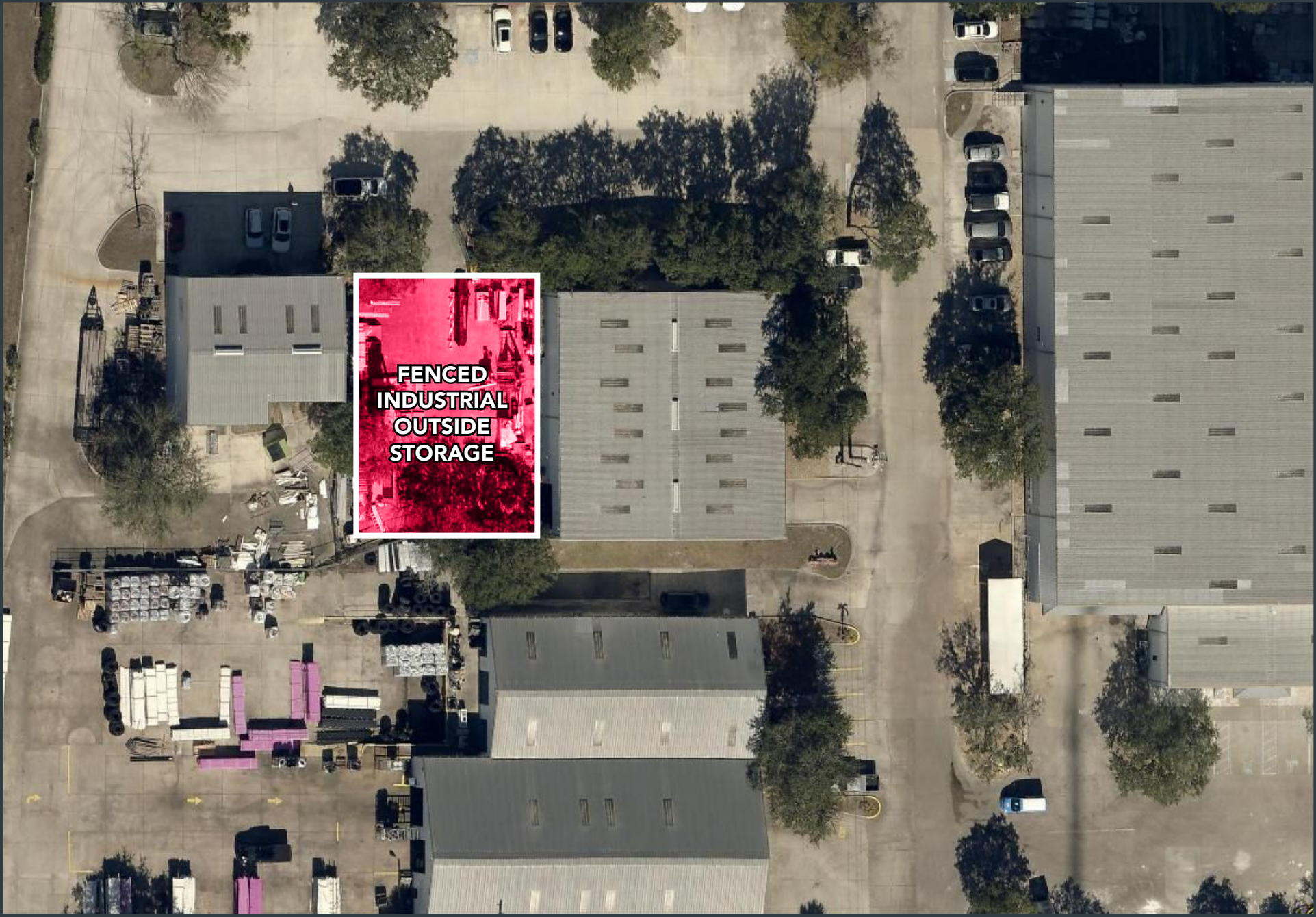
SITE PLAN | AVAILABILITIES



AVAILABLE	SIZE (SF)	DOORS	LEASE TYPE	LEASE RATE*	DESCRIPTION
11/1/2026	7,000 SF 3,475 SF Office 3,525 SF Warehouse	Cross Load Grade Doors	NNN	Call for Info	Free standing building with ~1/4 Acre Fenced IOS Space











CONTACT:

Derek Riggleman, SIOR
Senior Vice President/Principal
driggleman@lee-associates.com
D 407.456.3463

Aaron Torres
Associate
atorres@lee-associates.com
D 407.922.7632

Brady Benton
Associate
bbenton@lee-associates.com
D 863.624.1936

Ryan Griffith
Senior Vice President/Principal
rgriffith@lee-associates.com
D 908.208.4774

All information furnished regarding property for sale, rental or financing is from sources deemed reliable, but no warranty or representation is made to the accuracy thereof and same is submitted to errors, omissions, change of price, rental or other conditions prior to sale, lease or financing or withdrawal without notice. No liability of any kind is to be imposed on the broker herein.