

For Sale

# Freestanding Commercial Building

1,920 SF | \$399,000



## 849 Deltona Blvd

Deltona, Florida 32725

### Property Highlights

- 1,920± SF commercial building - ideal for retail, office or healthcare uses
- Large parking lot with 12+ parking spaces
- 1/4 mile north of Enterprise Road
- Very close to Deltona I-4 interchange (exit 108)
- Convenient to Heathrow, Lake Mary and Sanford
- 8± miles to SR 429 (Western Beltway) and SR 417 (GreeneWay)
- Why rent when you can OWN? Pay yourself!



**Sale Price: \$399,000**

### Demographics

	5 Miles	7 Miles	10 Miles
Total Households	41,079	73,555	122,378
Total Population	105,233	193,649	321,978
Average HH Income	\$86,154	\$88,308	\$92,205

For more information

**Jeffrey Bloom, CCIM**

O: 407 949 0709

[jbloom@realvest.com](mailto:jbloom@realvest.com)

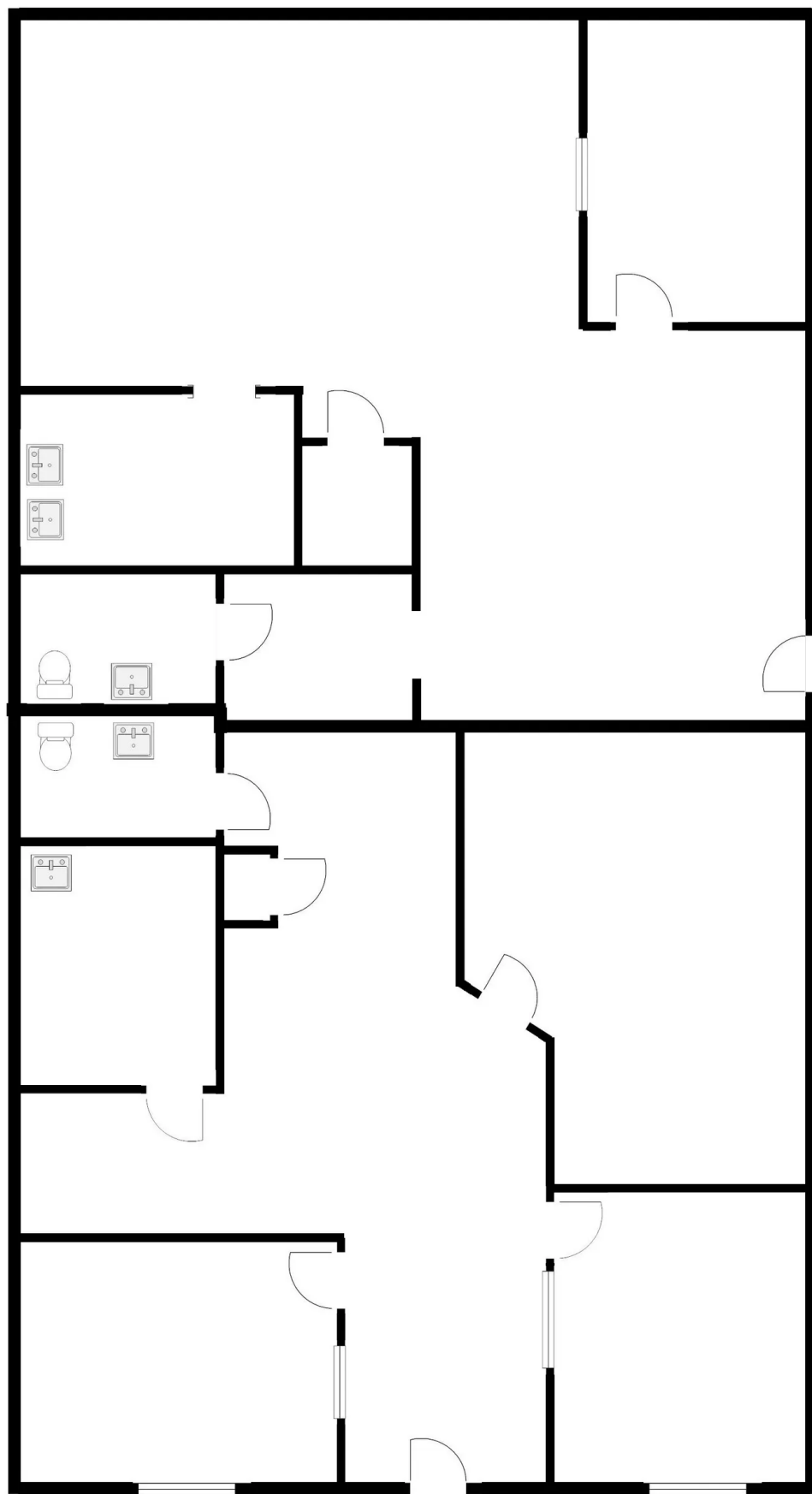


06.22.26

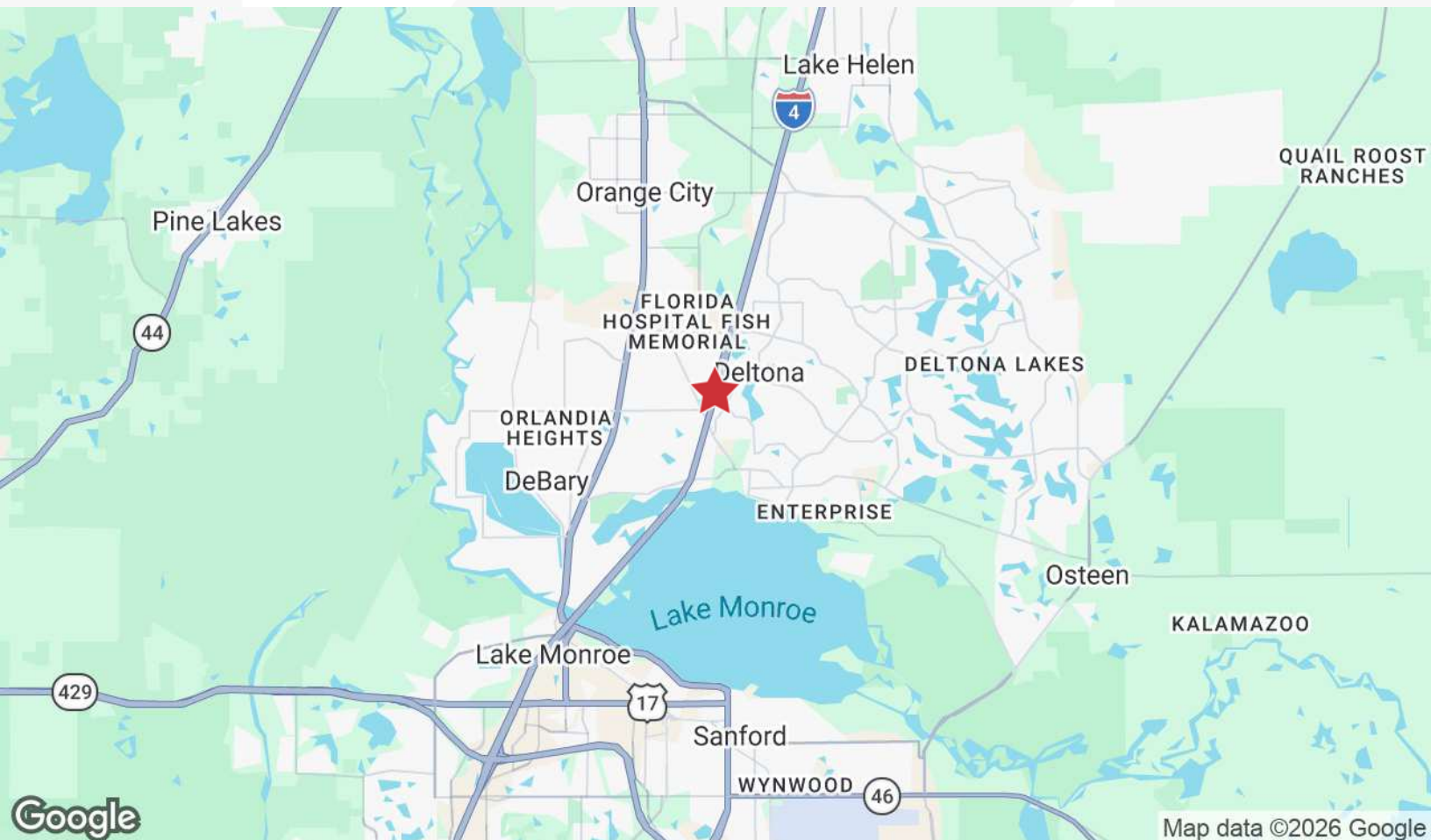
The information contained herein has been given to us by the owner of the property or other sources we deem reliable. We have no reason to doubt its accuracy, but we do not guarantee it. All information should be verified prior to purchase or lease. Unless otherwise noted, the property is being offered as-is, where is, with all faults.

1800 Pembroke Drive, Suite 350  
Orlando, FL 32810  
407 875 9989 tel  
[nairealvest.com](http://nairealvest.com)

# Floor Plan - 1,920± SF



# Location Maps



# Retailer Map



Map data ©2025 Google Imagery ©2025 Airbus, Landsat / Copernicus, Maxar Technologies