

Eagle Ridge Mall



43,000 ±
Cars/Day



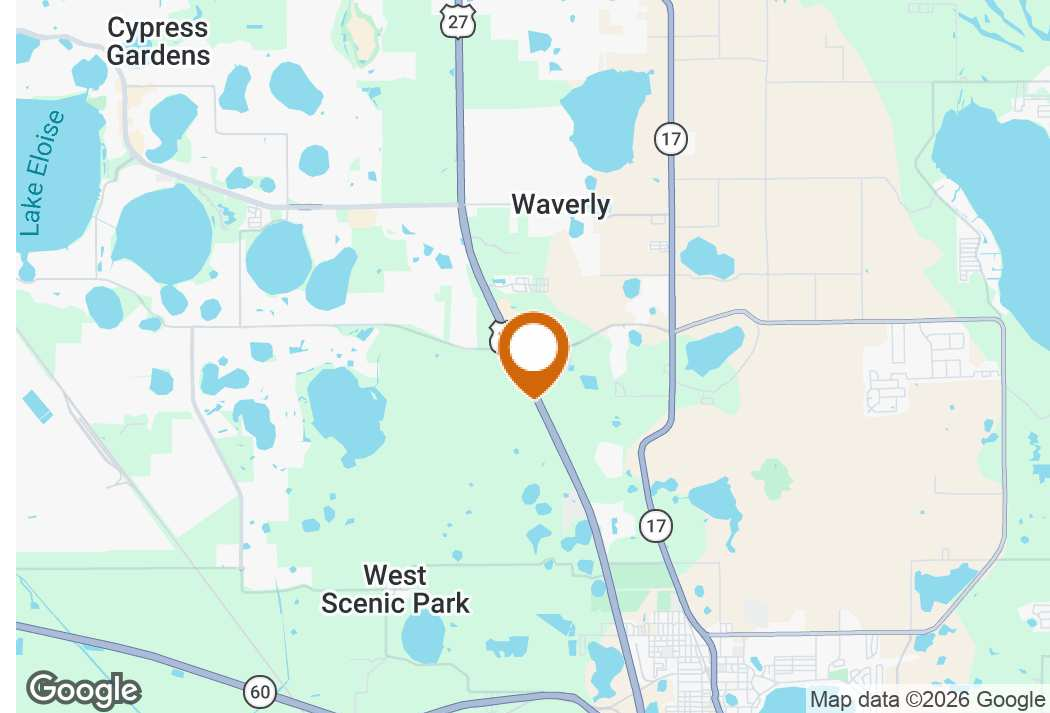
Lake Wales Commercial Development Lot

US Highway 27, Lake Wales, Florida 33853

Trace Linder
863-287-3281
trace@saundersrealestate.com

Sid Bhatt, CCIM, SIOR
704-930-8179
sid@saundersrealestate.com

PROPERTY SUMMARY



Offering Summary

Sale Price:	\$499,500
Lot Size:	0.75 Acres - (Net Developable)
PIN:	272921866002000040
Zoning:	C-3 Highway Commercial
Traffic Count:	43,000 ± Cars/Day
Property Type:	Development Land

Property Overview

NEW PRICING! This prime 0.75-acre commercial parcel is situated along Highway 27, offering excellent visibility and accessibility. As the last remaining parcel on a newly developed thoroughfare, this property presents a unique development opportunity. This parcel is surrounded by new development and national retail brands including: Starbucks, Chipotle, Slim Chickens, Pinnacle Self Storage, and Hampton Inn. Water and sewer are stubbed to the property and all roads are complete. The C-3 Highway Commercial zoning allows for a wide range of commercial uses, providing flexibility and immediate progress for potential developers.

Property Highlights

- 0.75 net developable acres
- Water/Sewer stubbed
- Stubbed for off site stormwater
- Access roads complete



Location Description

Strategically located along Highway 27 in Lake Wales; 0.5 miles south of Thompson Nursery/Chalet Suzanne Road and 3.8 miles north of the Highway 60 interchange. Positioned within a rapidly developing area of Lake Wales, this property offers excellent visibility and accessibility. The flexible C-3 Highway Commercial zoning allows for a wide range of development possibilities.

Publix
Wawa
DUNKIN'
McDonald's
KOHLS
Bealls

CHEVROLET

DOLLAR TREE

planet fitness

Eagle Ridge Mall

LOWE'S

KIA

STARBUCKS COFFEE

Bob Evans
FARMHOUSE KITCHEN

ABC
SWEET SPICES

Pinnacle STORAGE

SLIM CHICKENS

CHIPOTLE
MEXICAN GRILL

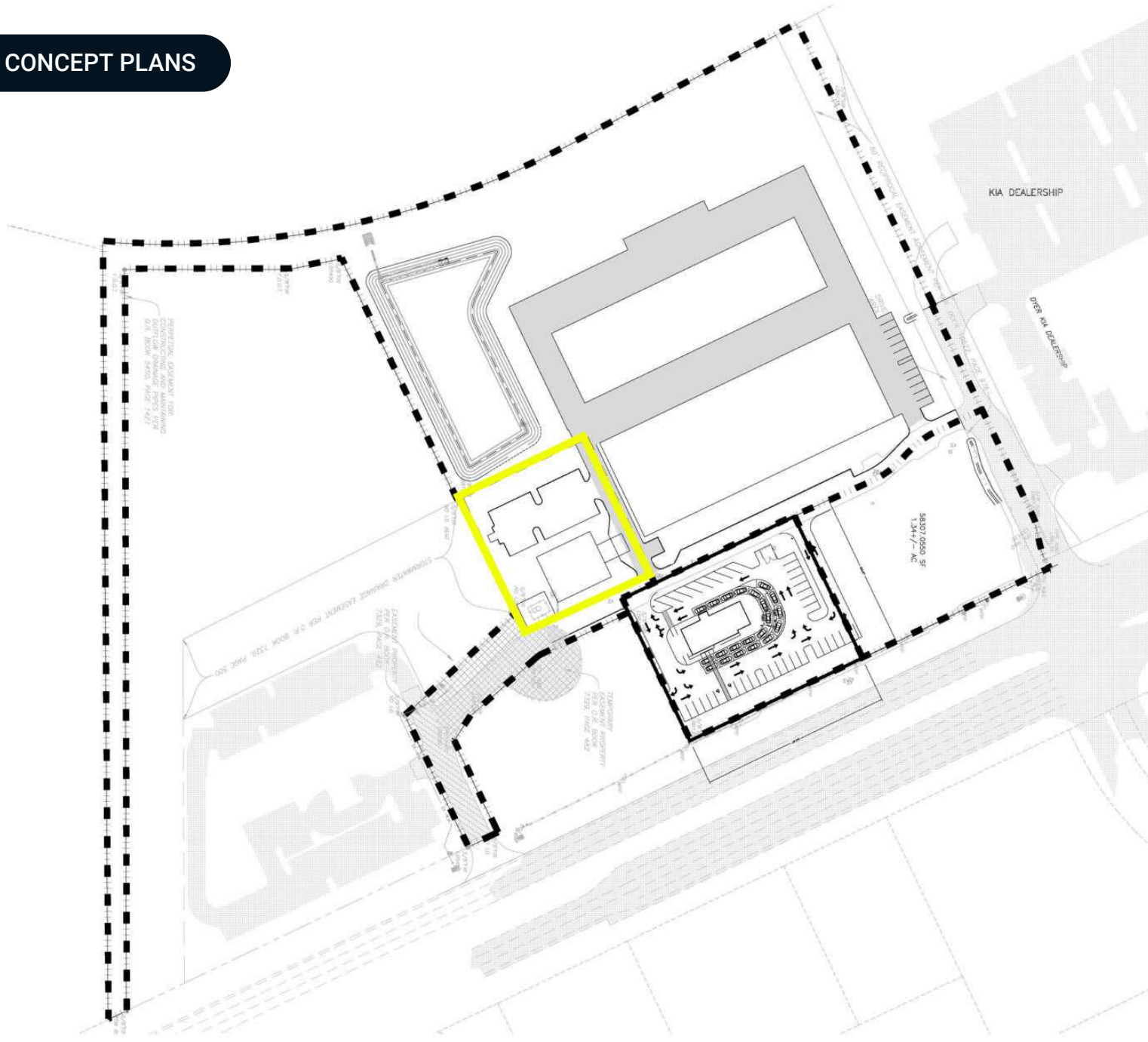
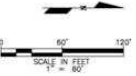
Hampton Inn & Suites
by HILTON

43,000 ±
Cars/Day

27



CONCEPT PLANS



FLOOD ZONE:
 THIS SITE IS IN FLOOD INSURANCE RATE MAP (FIRM) ZONE "AE"
 AS SHOWN ON FEDERAL EMERGENCY MANAGEMENT MAP NO. 12105C0005H DATED 12-22-2016.
SOILS:
 ACCORDING TO THE SOIL SURVEY OF POLK COUNTY, FLORIDA
SOLID WASTE:
 ON-SITE DUMPSTER
TRAFFIC GENERATION:
 ACCESS TO THE PUBLIC ROAD SYSTEM WILL BE VIA US HIGHWAY 27 (STATE ROAD 25)
WATER & SEWER:
 SEWER TO BE PROVIDED VIA AN EXISTING SERVICE FROM A PRIVATE ONSITE SYSTEM.
 WATER TO BE PROVIDED VIA AN EXISTING SERVICE CONNECTION TO THE ON SITE CITY
 OF LAKE WALES WATER MAIN.

LINE LEGEND

- PROPERTY BOUNDARY
- EXISTING OVERHEAD ELEC.
- PHASE LINE
- ROAD CENTERLINE

SIGNAGE

≡ THE SHOPS ≡
AT LAKE WALES

 **CUBESMART**[®]
self storage

AVAILABLE FOR USER



DRIVE
THRU

≡ THE SHOPS ≡
AT LAKE WALES

 **CUBESMART**[®]
self storage

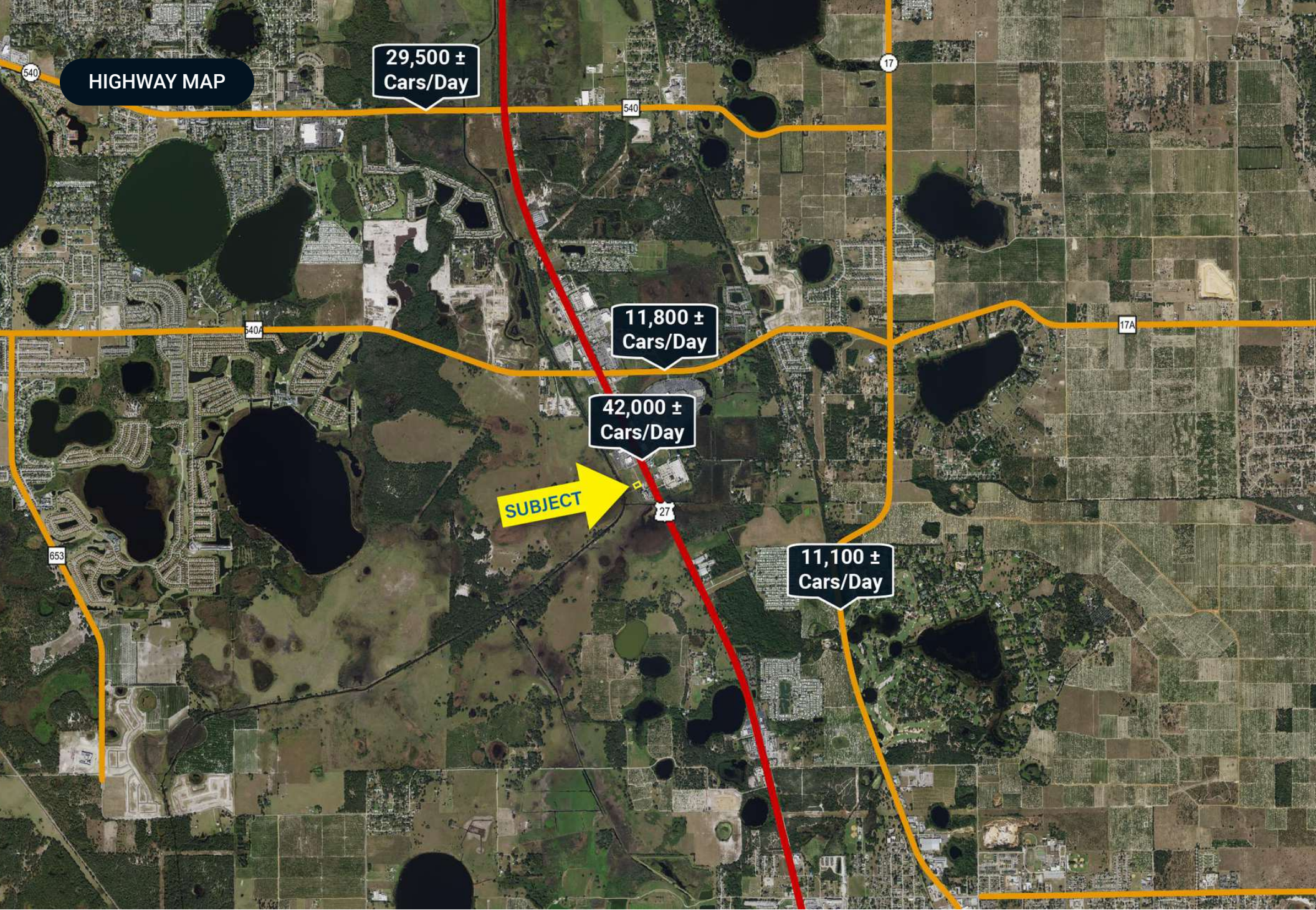
AVAILABLE FOR USER



DRIVE
THRU

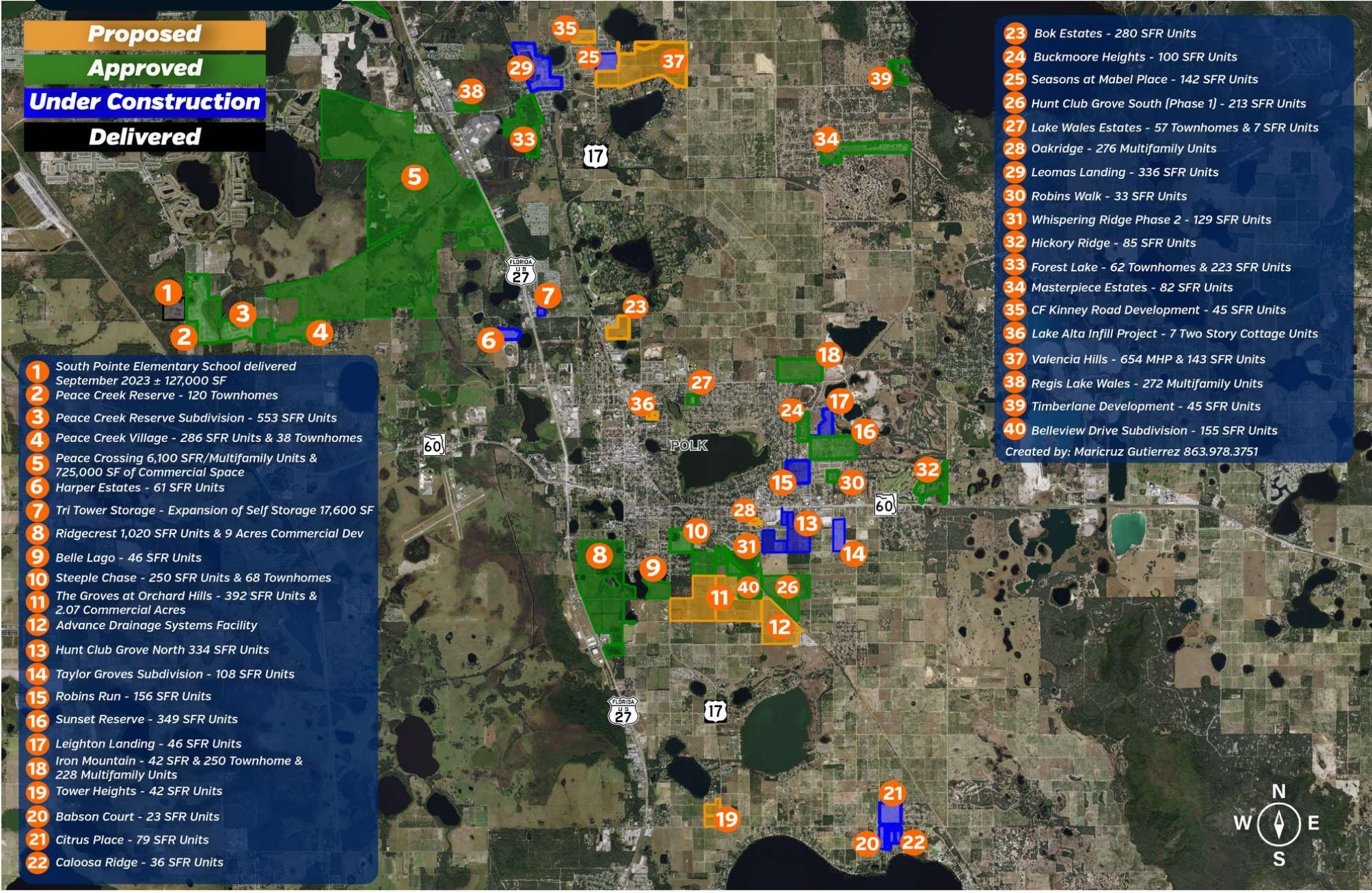
ADJACENT RETAILERS





NEARBY DEVELOPMENTS

- Proposed**
- Approved**
- Under Construction**
- Delivered**



- 1** South Pointe Elementary School delivered September 2023 ± 127,000 SF
- 2** Peace Creek Reserve - 120 Townhomes
- 3** Peace Creek Reserve Subdivision - 553 SFR Units
- 4** Peace Creek Village - 286 SFR Units & 38 Townhomes
- 5** Peace Crossing 6,100 SFR/Multifamily Units & 725,000 SF of Commercial Space
- 6** Harper Estates - 61 SFR Units
- 7** Tri Tower Storage - Expansion of Self Storage 17,600 SF
- 8** Ridgecrest 1,020 SFR Units & 9 Acres Commercial Dev
- 9** Belle Lago - 46 SFR Units
- 10** Steeple Chase - 250 SFR Units & 68 Townhomes
- 11** The Groves at Orchard Hills - 392 SFR Units & 2.07 Commercial Acres
- 12** Advance Drainage Systems Facility
- 13** Hunt Club Grove North 334 SFR Units
- 14** Taylor Groves Subdivision - 108 SFR Units
- 15** Robins Run - 156 SFR Units
- 16** Sunset Reserve - 349 SFR Units
- 17** Leighton Landing - 46 SFR Units
- 18** Iron Mountain - 42 SFR & 250 Townhome & 228 Multifamily Units
- 19** Tower Heights - 42 SFR Units
- 20** Babson Court - 23 SFR Units
- 21** Citrus Place - 79 SFR Units
- 22** Caloosa Ridge - 36 SFR Units

- 23** Bok Estates - 280 SFR Units
 - 24** Buckmoore Heights - 100 SFR Units
 - 25** Seasons at Mabel Place - 142 SFR Units
 - 26** Hunt Club Grove South (Phase 1) - 213 SFR Units
 - 27** Lake Wales Estates - 57 Townhomes & 7 SFR Units
 - 28** Oakridge - 276 Multifamily Units
 - 29** Leomas Landing - 336 SFR Units
 - 30** Robins Walk - 33 SFR Units
 - 31** Whispering Ridge Phase 2 - 129 SFR Units
 - 32** Hickory Ridge - 85 SFR Units
 - 33** Forest Lake - 62 Townhomes & 223 SFR Units
 - 34** Masterpiece Estates - 82 SFR Units
 - 35** CF Kinney Road Development - 45 SFR Units
 - 36** Lake Alta Infill Project - 7 Two Story Cottage Units
 - 37** Valencia Hills - 654 MHP & 143 SFR Units
 - 38** Regis Lake Wales - 272 Multifamily Units
 - 39** Timberlane Development - 45 SFR Units
 - 40** Belleview Drive Subdivision - 155 SFR Units
- Created by: Maricruz Gutierrez 863.978.3751

RETAILER MAP



Map data ©2026 Google Imagery ©2026 Airbus, Maxar Technologies

DEMOGRAPHICS MAP & REPORT

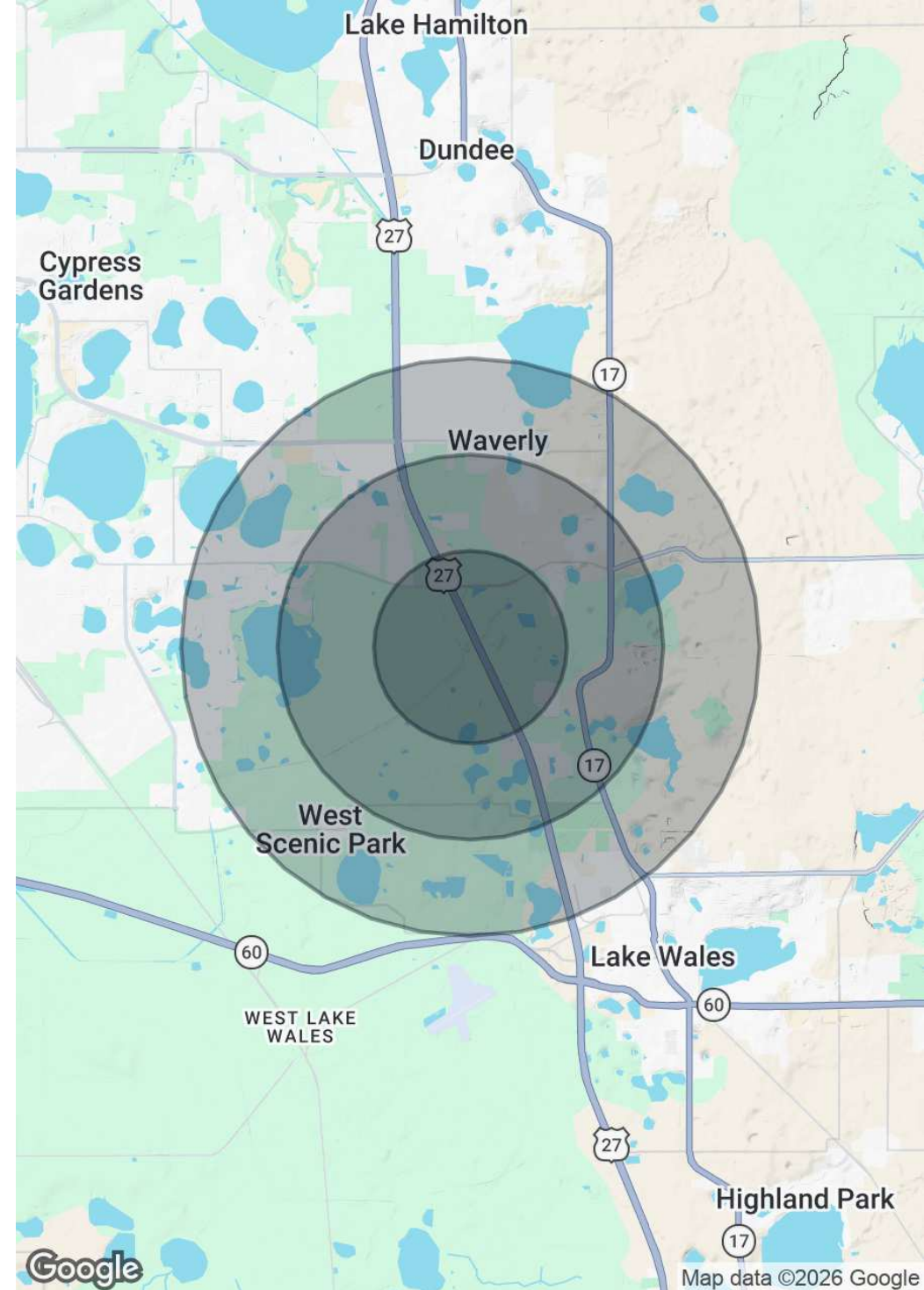
Population

	1 Mile	2 Miles	3 Miles
Total Population	787	6,888	15,666
Average Age	54	49	50
Average Age (Male)	54	48	49
Average Age (Female)	55	50	50

Households & Income

	1 Mile	2 Miles	3 Miles
Total Households	380	3,065	6,940
# of Persons per HH	2.1	2.2	2.3
Average HH Income	\$58,814	\$64,493	\$68,203
Average House Value	\$231,842	\$266,834	\$282,205

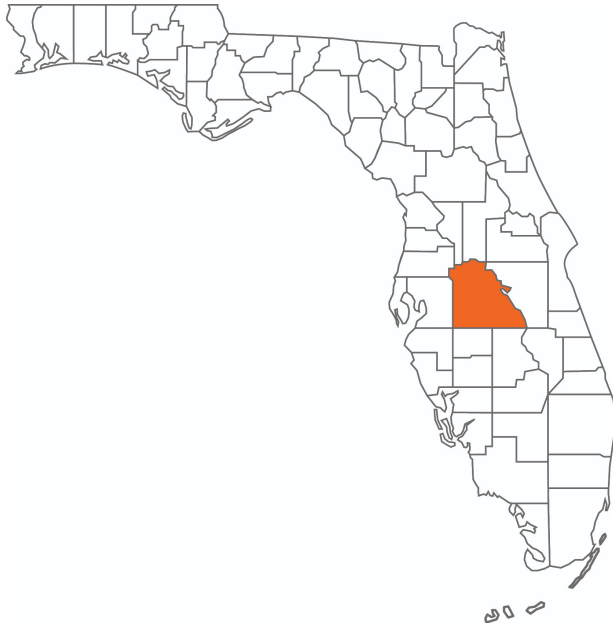
2020 American Community Survey (ACS)



COUNTY



Polk County FLORIDA



Founded	1861	Density	386.5 (2019)
County Seat	Bartow	Population	775,084 (2023)
Area	1,875 sq. mi.	Website	polk-county.net

In Florida, Polk County is a leading contributor to the state's economy and politics. Concerning the local economy, industries like citrus, cattle, agriculture, and phosphate have all played extremely vital roles in Polk County. An increase in tourist revenue has also significantly contributed to the county's economic growth in recent years. As the heart of Central Florida, Polk County's location between the Tampa and Orlando Metropolitan Areas has aided in the development and growth of the area. Residents and visitors alike are drawn to the unique character of the county's numerous heritage sites, cultural venues, stunning natural landscapes, and plentiful outdoor activities.



Lake Wales

POLK COUNTY

Founded	1917
Population	16,774 (2023)
Area	14
Website	lakewalesfl.gov

Major Employers

- NuCor Steel
- AdventHealth
- Florida's Natural Growers
- Peterson Industries

The city of Lake Wales, Florida was officially incorporated in April 1917. The city developed quickly when in 1925, the Atlantic Coast Line Railroad constructed a new railway connecting Haines City to Everglades City. With the development of this line, a new depot was opened in Lake Wales.

Located west of Lake Kissimmee and east of Tampa, the city of Lake Wales is part of the Lakeland–Winter Haven Metropolitan Statistical Area of Central Florida. The city is geographically located near the center of Florida’s peninsula, right on the Lake Wales Ridge upland area. Currently, 9 million people live within 100 miles of the city.

The city of Lake Wales serves as an excellent location for commercial real estate. Featuring tenants like Kegel, Merlin Entertainment, TruGreen, and AT&T, the Lake Wales Commerce and Technology Park is on the busy U.S. Route 27 just south of the city. Bok Tower Gardens is a nearby national historic landmark featuring a 205 foot carillon tower atop one of Florida's highest points.

ADVISOR BIOGRAPHY



Trace Linder

Advisor

trace@saundersrealestate.com

Direct: **877-518-5263 x463** | Cell: **863-287-3281**

Professional Background

Trace Linder is an Advisor at Saunders Real Estate.

Trace is a licensed real estate sales associate based in Tampa, FL. As a fourth-generation Floridian raised in the Lakeland area, Trace has strong ties to the heart of Florida's cattle and citrus country. He is an avid outdoorsman with a passion for wildlife, conservation, and most importantly the land.

Trace earned his Bachelor of Science degree from the University of Florida's Agricultural Operations Management program before embarking on a twelve-year career in construction equipment sales for one of the leading Caterpillar machinery dealerships in the United States. His sales and management experience later led him to become the North American General Manager for an international construction equipment manufacturer. Throughout his career in sales and customer relations, Trace has always prioritized the needs of his clients.

In addition to his professional accomplishments, Trace is a Caterpillar Six Sigma Black Belt and an active member of several organizations dedicated to wildlife conservation, including Ducks Unlimited, The National Wild Turkey Federation, and Captains for Clean Water. He is also the Chairman of Conservation Florida's Central Florida Advisory Board.

Trace Specializes in:

- Commercial & Industrial
- Residential Development
- Recreational & Hunting Land

ADVISOR BIOGRAPHY



Sid Bhatt, CCIM, SIOR

Senior Advisor

sid@saundersrealestate.com

Direct: **877-518-5263 x484** | Cell: **704-930-8179**

Professional Background

Sid Bhatt, CCIM, SIOR is a Senior Advisor at Saunders Real Estate.

An expert in his field, Sid primarily focuses on managing investment sales, leasing, and property management in the Tampa Bay area. He specializes in critical industrial real estate assets with a focus on 3rd party logistics, cold storage, life science, and sale leasebacks. With over 15 years of commercial real estate experience, Sid has achieved a career sales volume close to \$100 million, fostering client relationships with Lightstone, EB5 United, L&M Development, Switzenbaum & Associates, Crossharbor Capital, CanAM, Big River Steel, Strand Capital, Dollar General & CleanAF Operations, Inc.

In 2008, Sid began his commercial brokerage career in the Carolinas with Coldwell Banker and later with NNNet Advisors, Marcus & Millichap, and eventually the SVN Commercial Advisory Group. Now, Sid has seamlessly transitioned his expertise and deep market insights by joining SVN | Saunders Ralston Dantzler Real Estate.

Since the start, Sid has proven to be an effective deal manager who has strategically penetrated key markets in single & multi-tenant assets through his relationships with developers, private client capital, and overseas investors. He has a strong history of working in investment banking with private placement transactions for accredited investors in structured real estate bonds.

Prior to becoming a commercial broker, Sid worked for over 20 years in sales and marketing management with Hewlett Packard/Agilent Technologies. He was instrumental in implementing several corporate real estate projects, namely the Centers of Excellence in CA, DE, and across the US and Canada. Sid also holds an MBA from Fordham University, NY, and a Certificate of Professional Development from the University of Pennsylvania – The Wharton School.

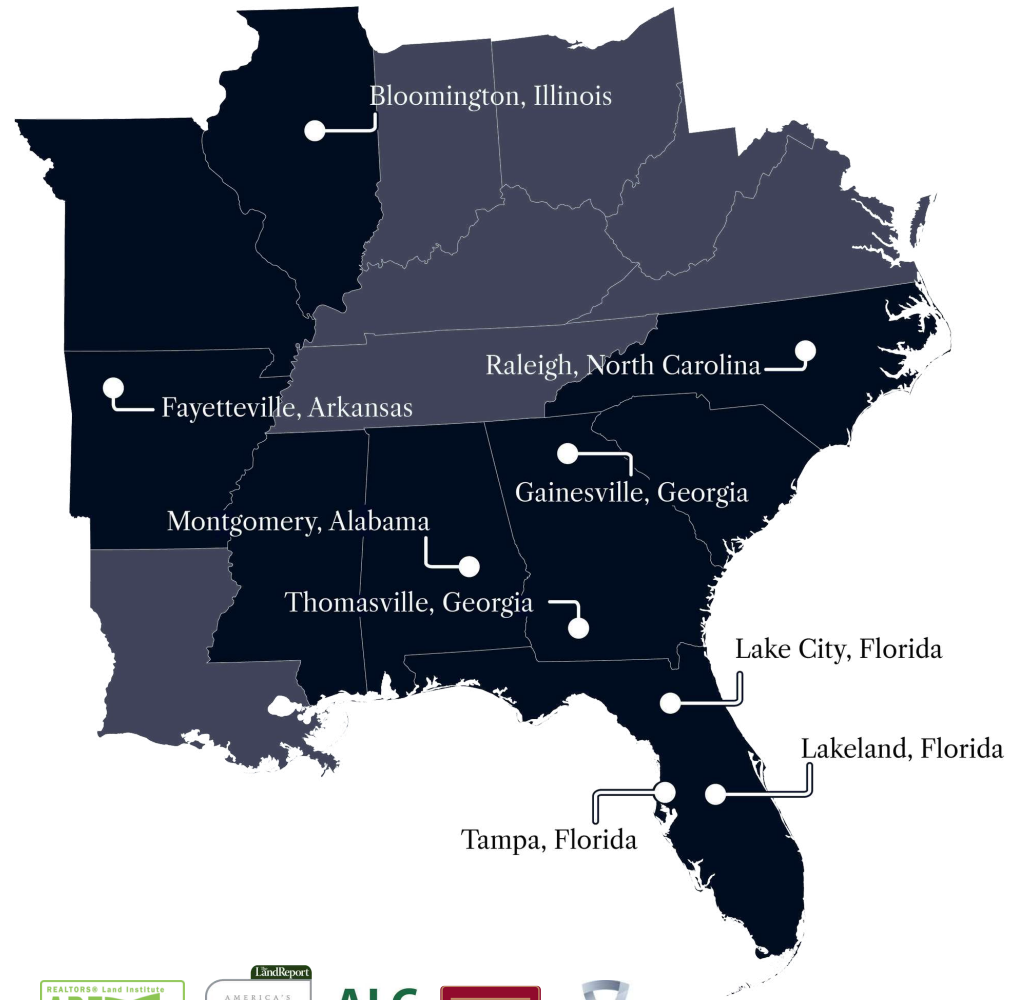
Sid was awarded the coveted CCIM (Certified Commercial Investment Member) designation in 2010 and the SIOR (Society of Industrial & Office Realtors) in 2022. He is involved in the following charities : DNS Relief Fund, Samaritan's Purse and Gideons International.

Sid Bhatt specializes in:

- Industrial
- Retail
- Office



At Saunders Real Estate, we deliver full-service real estate solutions, built on more than 30 years of trusted experience. Our dedicated teams offer tailored guidance backed by deep regional insight and a proven track record. We believe that successful outcomes start with strong relationships built on trust and a shared commitment to your goals.



877-518-5263 • info@saundersrealestate.com



©2026 Saunders Real Estate, LLC. All rights reserved. The information contained in this communication is strictly confidential. This information has been obtained from sources believed to be reliable but has not been verified. NO WARRANTY OR REPRESENTATION, EXPRESS OR IMPLIED, IS MADE AS TO THE CONDITION OF THE PROPERTY (OR PROPERTIES) REFERENCED HEREIN OR AS TO THE ACCURACY OR COMPLETENESS OF THE INFORMATION CONTAINED HEREIN, AND SAME IS SUBMITTED SUBJECT TO ERRORS, OMISSIONS, CHANGE OF PRICE, RENTAL OR OTHER CONDITIONS, WITHDRAWAL WITHOUT NOTICE, AND TO ANY SPECIAL LISTING CONDITIONS IMPOSED BY THE PROPERTY OWNER(S). ANY PROJECTIONS, OPINIONS OR ESTIMATES ARE SUBJECT TO UNCERTAINTY AND DO NOT SIGNIFY CURRENT OR FUTURE PROPERTY PERFORMANCE.