

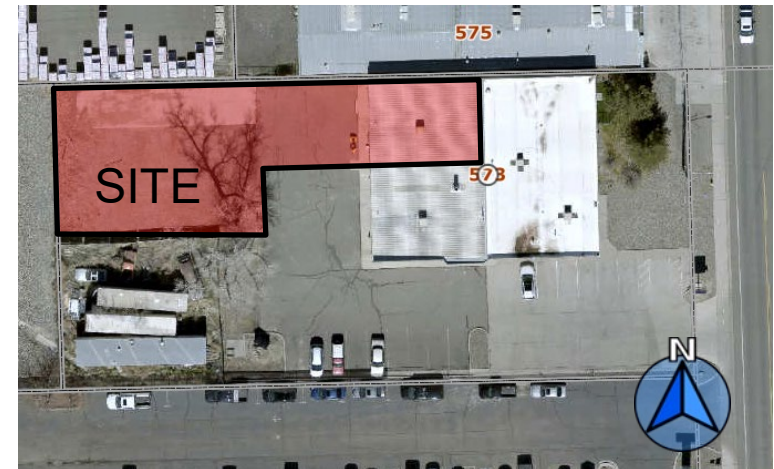
FOR LEASE



**COLDWELL BANKER
COMMERCIAL**
PRIME
PROPERTIES

**573 – 25 Road, NorthWest Unit
Grand Junction, CO 81505**

- 2,055 SF Warehouse
- .22 AC Security Fenced Yard
- Overhead Door
- \$2,000/MO + \$450 NNN/MO



CBCWORLDWIDE.COM CBC-PRIME.COM CBCWEST.COM

This information has been secured from sources we believe to be reliable, but we make no representations or warranties, expressed or implied, as to the accuracy of the information. References to square footage or age are approximate. Buyer must verify the information and bears all risk for any inaccuracies.

Mike Foster, CCIM | mfooster@cbcwest.com
Coldwell Banker Commercial Prime Properties

Direct: 970-244-6602
Mobile: 970-433-8374

131 N. 6th, St., Suite 2 00
Grand Junction, CO 81501

FOR LEASE

573 – 25 Road, Northwest Unit
Grand Junction, CO 81505



COLDWELL BANKER
COMMERCIAL

PRIME
PROPERTIES



CBCWORLDWIDE.COM CBC-PRIME.COM CBCWEST.COM

This information has been secured from sources we believe to be reliable, but we make no representations or warranties, expressed or implied, as to the accuracy of the information. References to square footage or age are approximate. Buyer must verify the information and bears all risk for any inaccuracies.

Mike Foster, CCIM | mfoster@cbcwest.com
Coldwell Banker Commercial Prime Properties

Direct: 970-244-6602
Mobile: 970-433-8374

131 N. 6th, St., Suite 2 00
Grand Junction, CO 81501