

PREMIER OFFICE SPACE

PRESTIGIOUS PGA NATIONAL SETTING WITH
DIRECT TURNPIKE ACCESS AND LAKE VIEWS



7111 & 7121 FAIRWAY DRIVE

Palm Beach Gardens, FL

 FairwayOfficeCenter.com

 561 471 8000

 **Merin Hunter
Codman, Inc.**
Commercial Real Estate Services, Worldwide.



Lake Views, Modern Spaces, Limitless Potential



Fairway Center

7111 & 7121 Fairway Drive
Palm Beach Gardens, FL



Property Highlights



Two, modern, four-story Class-A office buildings adjacent to the prestigious PGA National Resort



Direct access to PGA Boulevard & Florida's Turnpike, minutes from I-95



Amenities include green spaces for relaxation, ample parking with covered available, and move-in ready spaces available



Just a short drive to...



For more information

Jason Sundook, SIOR, Principal
561 471 8000 | jsundook@mhcreal.com



561 471 8000



1601 Forum Place, Suite 700
West Palm Beach, FL 33401



www.mhcreal.com
www.FairwayOfficeCenter.com

FOR LEASE: 7111 & 7121 FAIRWAY DRIVE, PALM BEACH GARDENS

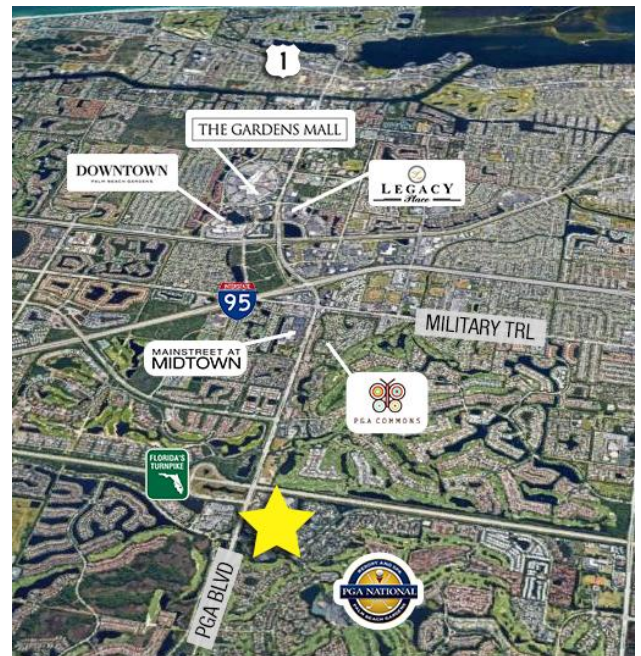
Workspace That Works For You, Near Everything



Stunning, First-Class Office Space on a Lush, 16-acre Campus

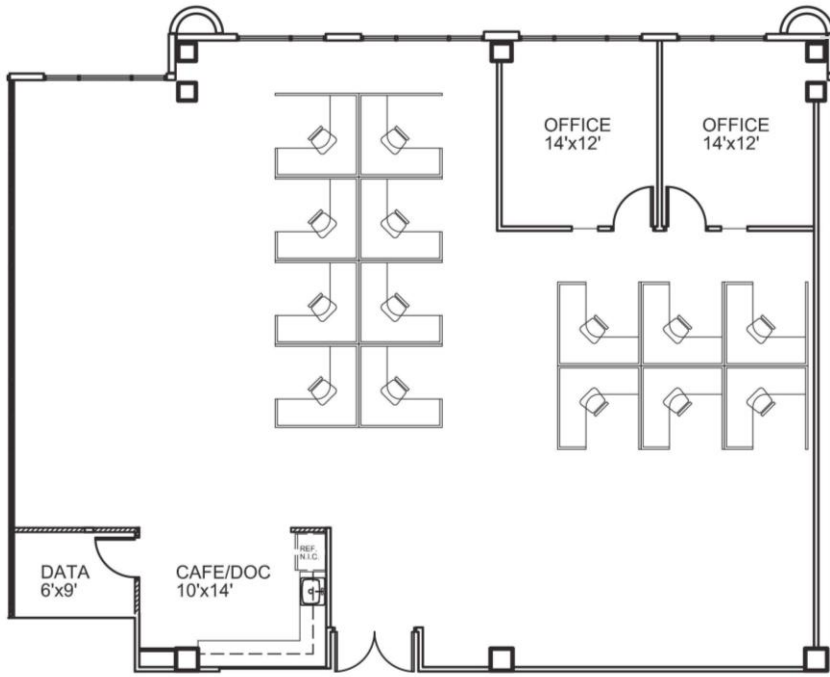
7111 & 7121 Fairway Drive are part of the prestigious Fairway Office Center, providing fantastic amenities in a prestigious location near the best of Palm Beach Gardens.

- Tropical and modern office park
- Ample parking with covered available
- Tranquil green spaces
- Close to popular shopping districts, luxurious residential communities, and country clubs



FOR LEASE: 7111 & 7121 FAIRWAY DRIVE, PALM BEACH GARDENS

Now Available: Move-In-Ready Office Suites



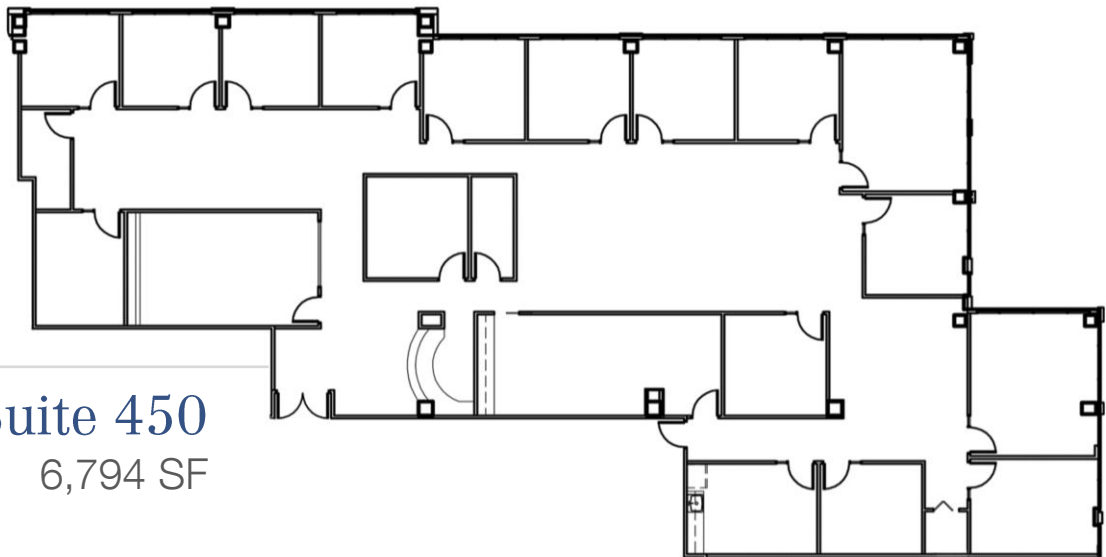
7111- Suite 410
3,378 SF



VIEW
3D TOUR

561 471 8000

These move-in-ready suites won't last long—call for more information!



7111- Suite 450
6,794 SF

