

# *Professional Office for Lease*

2,417± SF 2nd Floor Space with Private Offices  
9108 US Highway 19, Port Richey, FL 34668

**BERKSHIRE  
HATHAWAY** | FLORIDA  
HOMESERVICES | PROPERTIES  
GROUP

COMMERCIAL DIVISION



## ***For Lease***

- 2,417± SF 2<sup>nd</sup> floor office space
- Floorplan includes 7 private offices, a large conference room, breakroom, storage and 2 restrooms
- Elevator and stairwell accessible
- Excellent visibility and exposure
- 65,000 Daily Traffic on US Highway 19
- Lease Rate: \$14.00 PSF NNN

## **PRESENTED BY:**

**Kristy Marcelle**

Sales & Leasing Associate

727-239-9424

[kmarcelle@bhhsflpg.com](mailto:kmarcelle@bhhsflpg.com)

**Drew Gilmore**

Commercial Advisor

727-992-3056

[dgilmore@bhhsflpg.com](mailto:dgilmore@bhhsflpg.com)

Awarded #2 Producing Berkshire Hathaway Commercial Real Estate Company 2019

**Teamwork | Integrity | Passion | Excellence**

4950 West Kennedy Boulevard, Suite 300, Tampa, FL 33609 | 7916 Evolutions Way, Suite 210, Trinity, FL 34655

PH 813.739.5700 | [bhhsflpgcommercial.com](http://bhhsflpgcommercial.com)

.....

# Professional Office for Lease

2,417± SF 2nd Floor Space with Private Offices

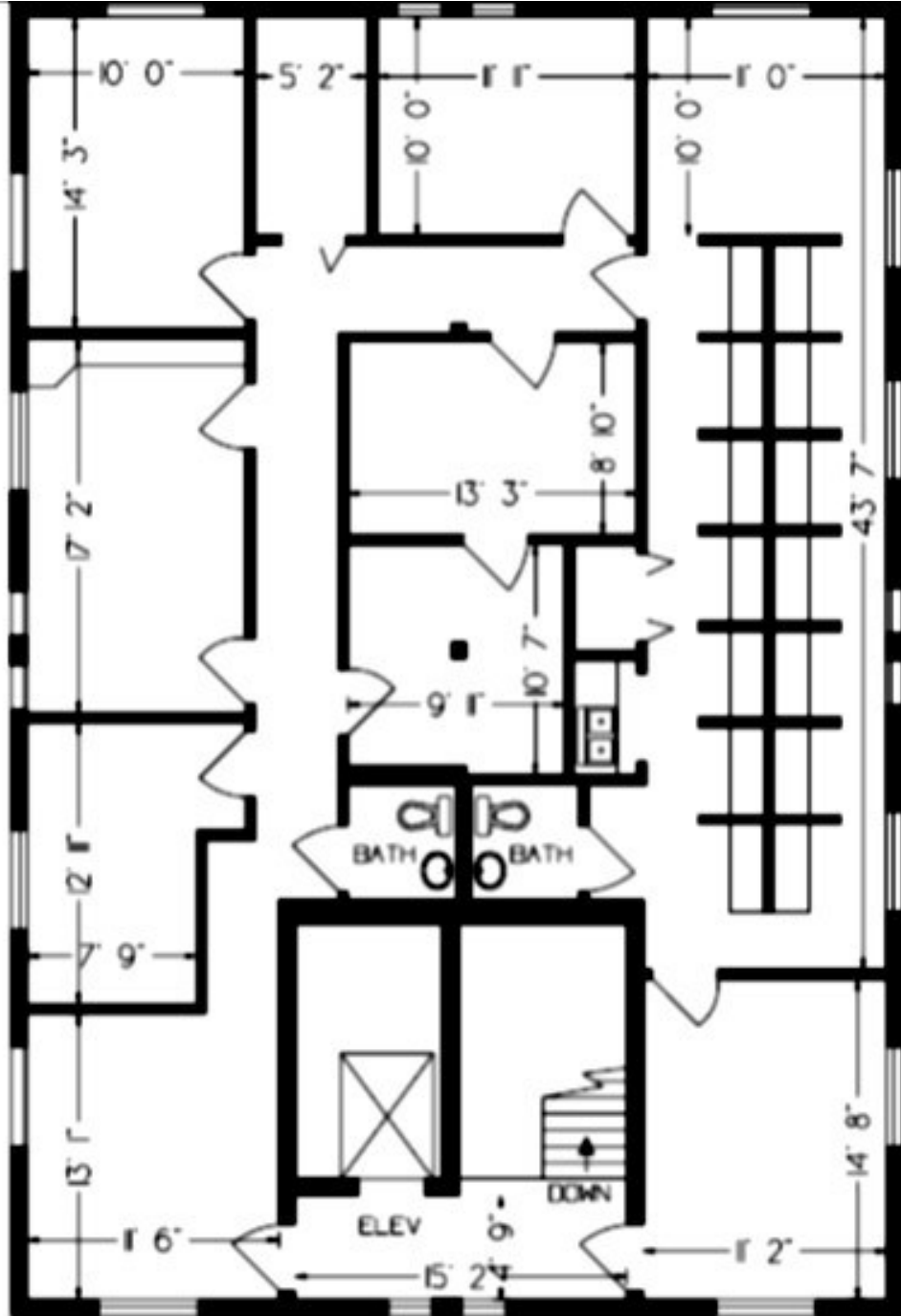
9108 US Highway 19, Port Richey, FL 34668

.....

**BERKSHIRE  
HATHAWAY**  
HOMESERVICES

FLORIDA  
PROPERTIES  
GROUP

COMMERCIAL DIVISION



2ND FLOOR

This information is from sources deemed to be reliable. We are not responsible for misstatements of facts, errors or omissions, prior sale, change of price, and/or terms or withdrawal from the market without notice. Buyer should verify all information with its' own representatives as well as state and local agencies. Brokers please note that a variable rate commission may exist on this offering that might result in a lower commission cost to the Seller if a Buyer's broker is not involved in the transaction. ©2022 BHH Affiliates, LLC. An independently owned and operated franchisee of BHH Affiliates, LLC. Berkshire Hathaway HomeServices and the Berkshire Hathaway HomeServices symbol are registered service marks of Columbia Insurance Company, a Berkshire Hathaway affiliate. EHO.

# Professional Office for Lease

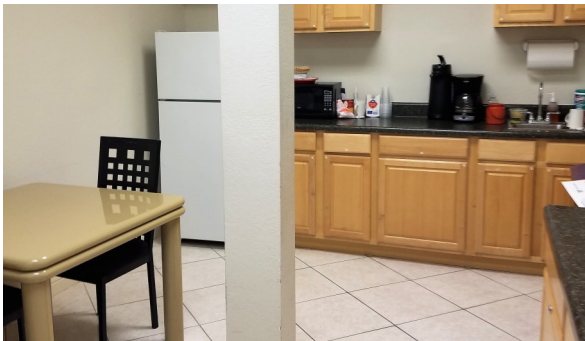
2,417± SF 2nd Floor Space with Private Offices

9108 US Highway 19, Port Richey, FL 34668

**BERKSHIRE  
HATHAWAY**  
HOMESERVICES

FLORIDA  
PROPERTIES  
GROUP

COMMERCIAL DIVISION



## AREA DEMOGRAPHICS (5 MILE RADIUS)

### KEY FACTS

  
124,910  
Population

51.0

Median Age

2.2

Average Household Size

120,479

Daytime Population

### ANNUAL HOUSEHOLD SPENDING



\$1,320  
Apparel & Services



\$105  
Computers



\$2,376  
Eating Out



\$3,618  
Groceries



\$4,388  
Health Care

### INCOME



\$42,083  
Median Household Income



\$25,663  
Per Capita Income



\$92,859  
Median Net Worth

### EMPLOYMENT



63%  
White Collar



22%  
Blue Collar



15%  
Services

4.9%

Unemployment Rate

This information is from sources deemed to be reliable. We are not responsible for misstatements of facts, errors or omissions, prior sale, change of price, and/or terms or withdrawal from the market without notice. Buyer should verify all information with its' own representatives as well as state and local agencies. Brokers please note that a variable rate commission may exist on this offering that might result in a lower commission cost to the Seller if a Buyer's broker is not involved in the transaction. ©2022 BHH Affiliates, LLC. An independently owned and operated franchisee of BHH Affiliates, LLC. Berkshire Hathaway HomeServices and the Berkshire Hathaway HomeServices symbol are registered service marks of Columbia Insurance Company, a Berkshire Hathaway affiliate. EHO.