

BEACON POINTE

801 - 805 S Kirkman Rd, Orlando, FL 32811



HIGHLIGHTS

- 29,710 SF Retail/Office Building.
- Located at the signalized intersection of Kirkman Road and Westgate Drive.
- **1,978 SF former salon space available.**
- **200 - 450 SF office space available.**
- Located close to Orlando International Airport, Universal Studios, and the attractions.
- Excellent visibility and strong daytime population.

Traffic Counts

Kirkman Rd: 48,500 vpd



MONTE MITCHELL | Monte@FornessProperties.com | 407.988.0073
www.FornessProperties.com | Licensed Real Estate Broker



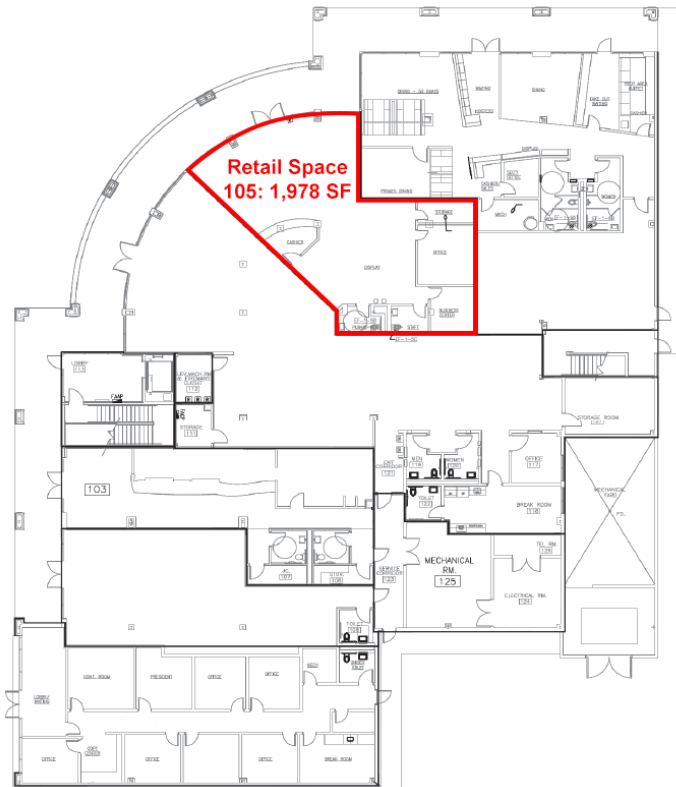
BEACON POINTE

801 - 805 S Kirkman Rd, Orlando, FL 32811

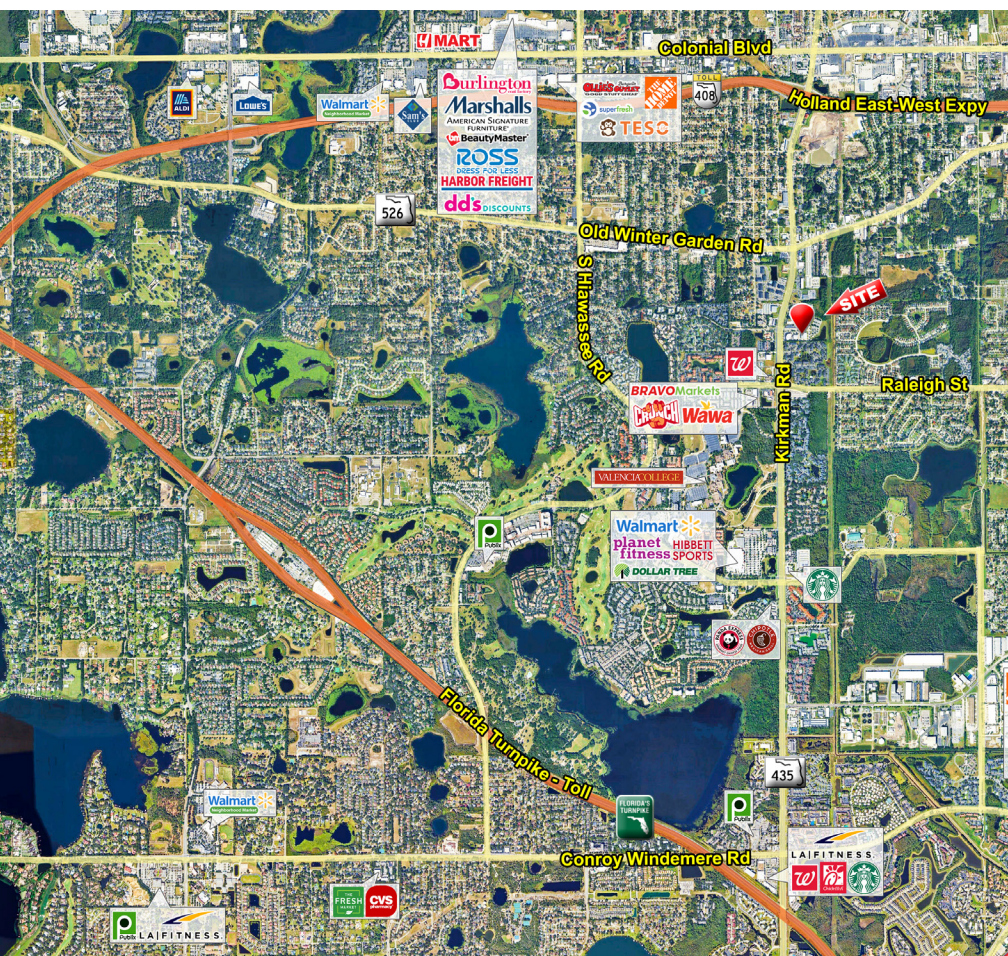


COMMERCIAL REAL ESTATE SERVICES

FIRST FLOOR



SECOND FLOOR



Demographics	1 Mile	3 Miles	5 Miles
Population	19,048	126,112	310,464
Average HH Income	\$62,085	\$72,785	\$80,588
Daytime Employees	9,273	63,535	272,475

