

FEMA Flood Map Service Center: Search By Address

Enter an address, place, or coordinates: 

CHALLENGER PKWY , Orlando FL 32826

Search

Whether you are in a high risk zone or not, you may need [flood insurance](https://www.fema.gov/national-flood-insurance-program) because most homeowners insurance doesn't cover flood damage. If you live in an area with low or moderate flood risk, you are 5 times more likely to experience flood than a fire in your home over the next 30 years. For many, a National Flood Insurance Program's flood insurance policy could cost less than \$400 per year. Call your insurance agent today and protect what you've built.

Learn more about [steps you can take](https://www.fema.gov/what-mitigation) to reduce flood risk damage.

Navigation

Search

MSC Home (/portal/)

MSC Search by Address (/portal/search)

MSC Search All Products (/portal/advanceSearch)

▼ MSC Products and Tools (/portal/resources/productsandtools)

Hazus (/portal/resources/hazus)

LOMC Batch Files (/portal/resources/lomc)

Product Availability (/portal/productAvailability)

MSC Frequently Asked Questions (FAQs) (/portal/resources/faq)

MSC Email Subscriptions (/portal/subscriptionHome)

Contact MSC Help (/portal/resources/contact)

Search Results—Products for ORANGE COUNTY UNINCORPORATED AREAS

Show ALL Products » (<https://msc.fema.gov/portal/availabilitySearch?addcommunity=120179&communityName=ORANGE COUNTY>)

The flood map for the selected area is number **12095C0280F**, effective on **9/25/2009**

DYNAMIC MAP



PRINT MAP/
FIRMette

(<https://msc.fema.gov/portal/firmette?latitude=28.574020&longitude=-81.196086>)

MAP IMAGE



DOWNLOAD
FIRM PANEL

([https://msc.fema.gov/portal/downloadProduct?](https://msc.fema.gov/portal/downloadProduct?productTypeID=FINAL_PRODUCT&productSubTypeID=FIRM_PANEL&productID=12095C0280F)

[productTypeID=FINAL_PRODUCT&productSubTypeID=FIRM_PANEL&productID=12095C0280F](https://msc.fema.gov/portal/downloadProduct?productTypeID=FINAL_PRODUCT&productSubTypeID=FIRM_PANEL&productID=12095C0280F))

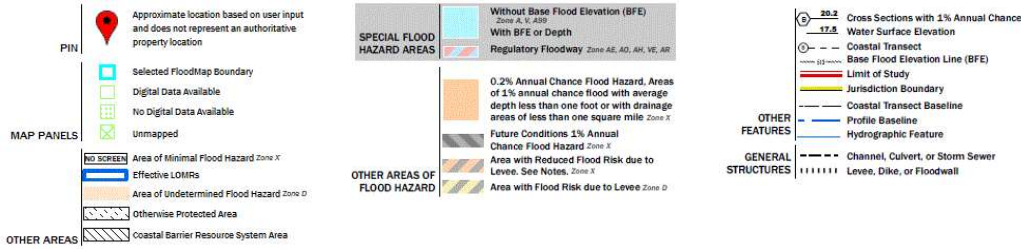
Changes to this FIRM

- Revisions (0)
- Amendments (11)
- Revalidations (1)

You can choose a new flood map or move the location pin by selecting a different location on the locator map below or by entering a new location in the search field above. It may take a minute or more during peak hours to generate a dynamic FIRMette.

Go To NFHL Viewer » (<https://hazards-fema.maps.arcgis.com/apps/webappviewer/index.html?id=8b0adb51996444d4879338b5>)





Share This Page.

[Home \(//www.fema.gov/\)](https://www.fema.gov/)
[Download Plug-ins \(https://www.fema.gov/about/website-information/plug-ins\)](https://www.fema.gov/about/website-information/plug-ins)
[About Us \(https://www.fema.gov/about\)](https://www.fema.gov/about)
[Privacy Policy \(https://www.fema.gov/about/website-information/privacy-policy\)](https://www.fema.gov/about/website-information/privacy-policy)
[FOIA \(https://www.fema.gov/foia\)](https://www.fema.gov/foia)
[Office of the Inspector General \(https://www.oig.dhs.gov/\)](https://www.oig.dhs.gov/)
[Strategic Plan \(https://www.fema.gov/about/strategic-plan\)](https://www.fema.gov/about/strategic-plan)
[Whitehouse.gov \(https://www.whitehouse.gov\)](https://www.whitehouse.gov)
[DHS.gov \(https://www.dhs.gov\)](https://www.dhs.gov)
[Ready.gov \(https://www.ready.gov\)](https://www.ready.gov)
[USA.gov \(https://www.usa.gov\)](https://www.usa.gov)
[DisasterAssistance.gov \(https://www.disasterassistance.gov/\)](https://www.disasterassistance.gov/)



<https://www.oig.dhs.gov/hotline>

Official website of the Department of Homeland Security