

FOR LEASE



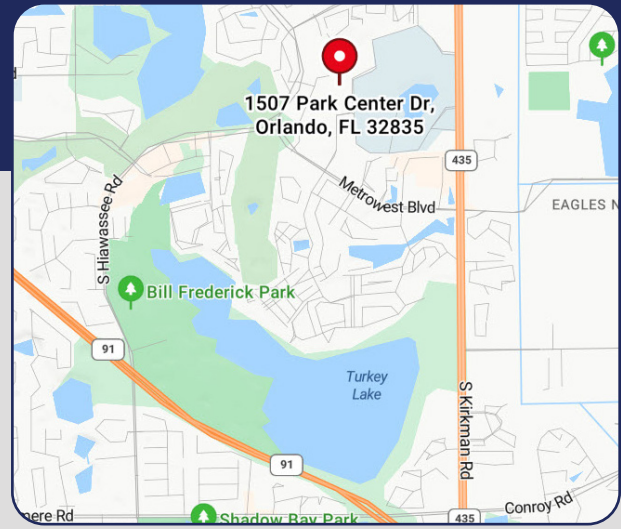
PRIVATE OFFICE CONDO

1507 Park Center Drive, Orlando, FL 32835

1,535 SF AVAILABLE IN UNIT F

UNIT F

- > 1,535 SF
- > Three offices, conference room, breakroom, and one restroom
- > **\$3,700.00/month**
- Generous parking
- Walk-up office suite
- Move-in ready
- Versatile office space suitable for a multitude of businesses
- Lease includes exterior maintenance and condo fees
- Easy access to Kirkman Road, Hiawasse Road, and the Florida Turnpike



Bill Bywater, CCIM
D 407.206.5736
O 407.206.7300
bill@bywater.com

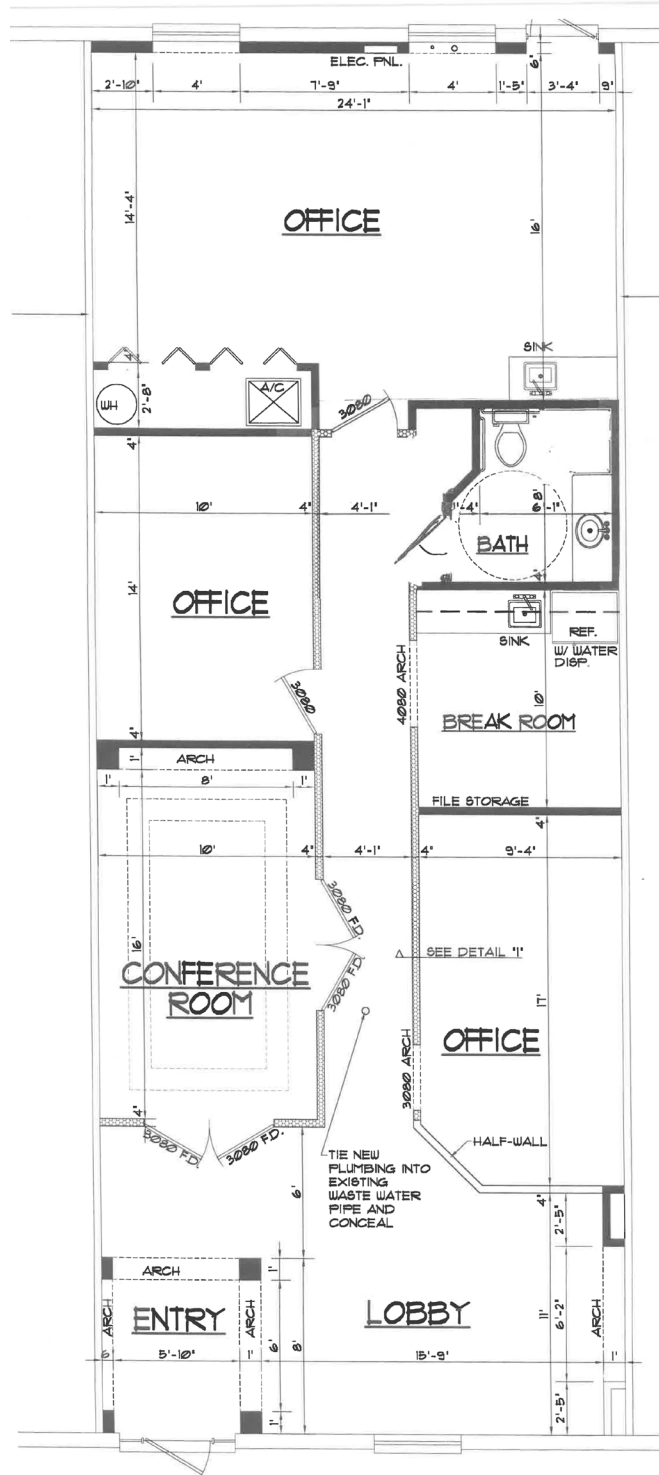


1209 Edgewater Drive
Suite 100
Orlando, FL 32804
407.206.7300 Main
www.bywater.com

PRIVATE OFFICE CONDOS

1507 Park Center Drive, Orlando, FL 32835

UNIT F - 1,535 SF



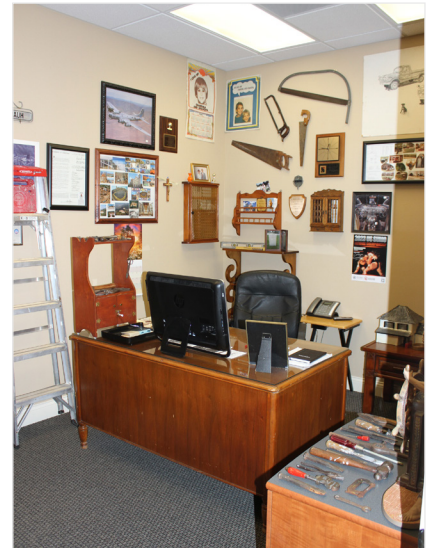
1209 Edgewater Drive, Suite 100 | Orlando, FL 32804 | 407.206.7300 | www.bywater.com

The information contained herein was obtained from sources deemed reliable and is assumed to be correct. It is not guaranteed by The Bywater Company.

PRIVATE OFFICE CONDOS

1507 Park Center Drive, Orlando, FL 32835

UNIT F - 1,535 SF



1209 Edgewater Drive, Suite 100 | Orlando, FL 32804 | 407.206.7300 | www.bywater.com

The information contained herein was obtained from sources deemed reliable and is assumed to be correct. It is not guaranteed by The Bywater Company.