

MLS # 12674502

RETAIL



QUICK SERVICE RESTAURANT

SALE PRICE: \$199,000

Coffee, Breakfast & Lunch Quick Service Restaurant

This turnkey coffee operation has everything for someone who wants to jump in and start running their own business today. This hidden gem offers opportunities that you will not find anywhere else. Located in an area that offers guaranteed customers, as well as being located next to a booming park filled with festivals, markets, music and more. It offers both indoor and outdoor seating. Current operations offer coffee, pastries, breakfast, snacks and lunch. This business is waiting for someone to make their own mark on it. Offers large storage area, parking, restrooms. Call today to discuss why this location is unique in so many ways and why the potential and financial opportunities are incredible.

City council must approve assignment of lease.

Specifications

Description:	Coffee/ Snack shop
Size:	900 SF + expansion
Year Built:	1914 / 2005 Renovated
HVAC System:	Gas forced air / Central Air
Electrical:	To be assessed
Washrooms:	2-3
Ceiling Height:	10' 10"
Parking:	Street and city lot
Sewer/Water:	City
Zoning:	B-4
Taxes:	N/A
CAM:	N/A
PIN #:	14-32-484-005

Demographics	1 Mile	3 Miles	5 Miles
Total Population	9,377	49,413	117,373
Average HH Income	\$106,443	\$128,359	\$136,672

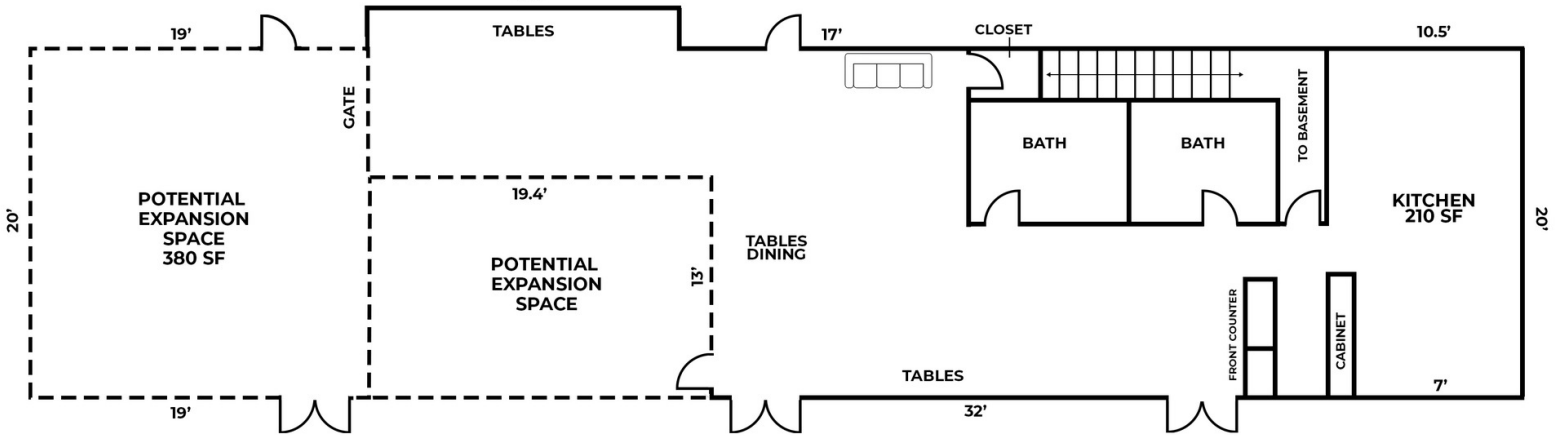
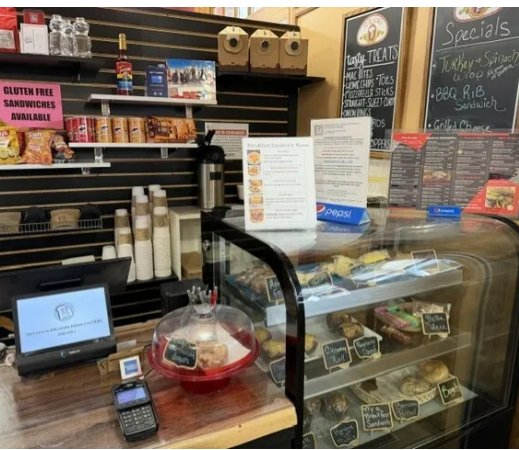
[CLICK HERE TO VIEW OUR WEBSITE](#)

No warranty or representation is made as to the accuracy of the foregoing information. Terms of sale or lease and availability are subject to change or withdrawal without notice. This document is for information purposes only. No offer of sub-agency is being made.



Bruce Kaplan
Senior Broker
BruceK@PremierCommercialRealty.com
O: 847.854.2300 x20 C: 847.507.1759

RETAIL



CLICK HERE TO VIEW OUR WEBSITE

No warranty or representation is made as to the accuracy of the foregoing information. Terms of sale or lease and availability are subject to change or withdrawal without notice. This document is for information purposes only. No offer of sub-agency is being made.



Bruce Kaplan Senior Broker BruceK@PremierCommercialRealty.com O: 847.854.2300 x20 C: 847.507.1759