

For Lease

Lee World Center

297 - 2,244 SF | \$26.50 / SF



1850 Lee Road

Winter Park, Florida 32789

Property Highlights

- 136,747± SF, three-story office building with 2 elevators
- Full-service building with ample parking: 242 spaces on 3.14± acre site
- 24-hour access with evening building attendant
- Great location midway between I-4 and US Hwy 17-92; only 2 minutes to I-4 on-ramp
- Very close to Winter Park Village and downtown Winter Park
- Close to restaurants, banks and shopping
- Zoning: O-1 (Office)
- Easy access to Lee Road, I-4, US Hwy 17-92, Morse Blvd, Fairbanks Avenue and Orange Avenue

AVAILABLE SPACES

Space	Size (RSF)
Suite 103-1	297
Suite 112	850
Suite 115	866
Suite 209	487
Suite 300	2,244
Suite 308	480
Suite 309	1,111

Lease Rate: \$26.50/SF Full Service

For more information

Jeffrey Bloom, CCIM

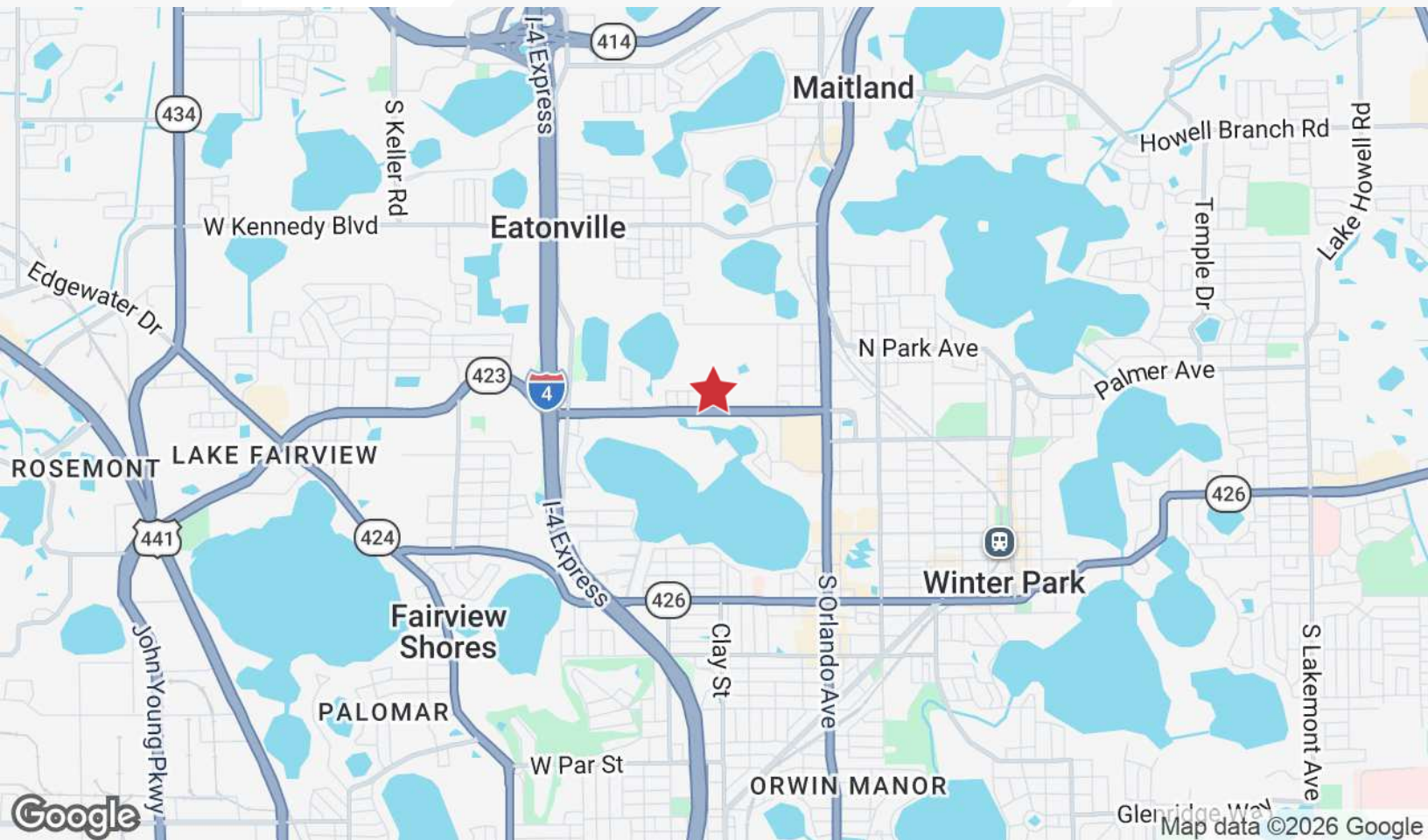
O: 407 949 0709

jbloom@realvest.com

Property Photos



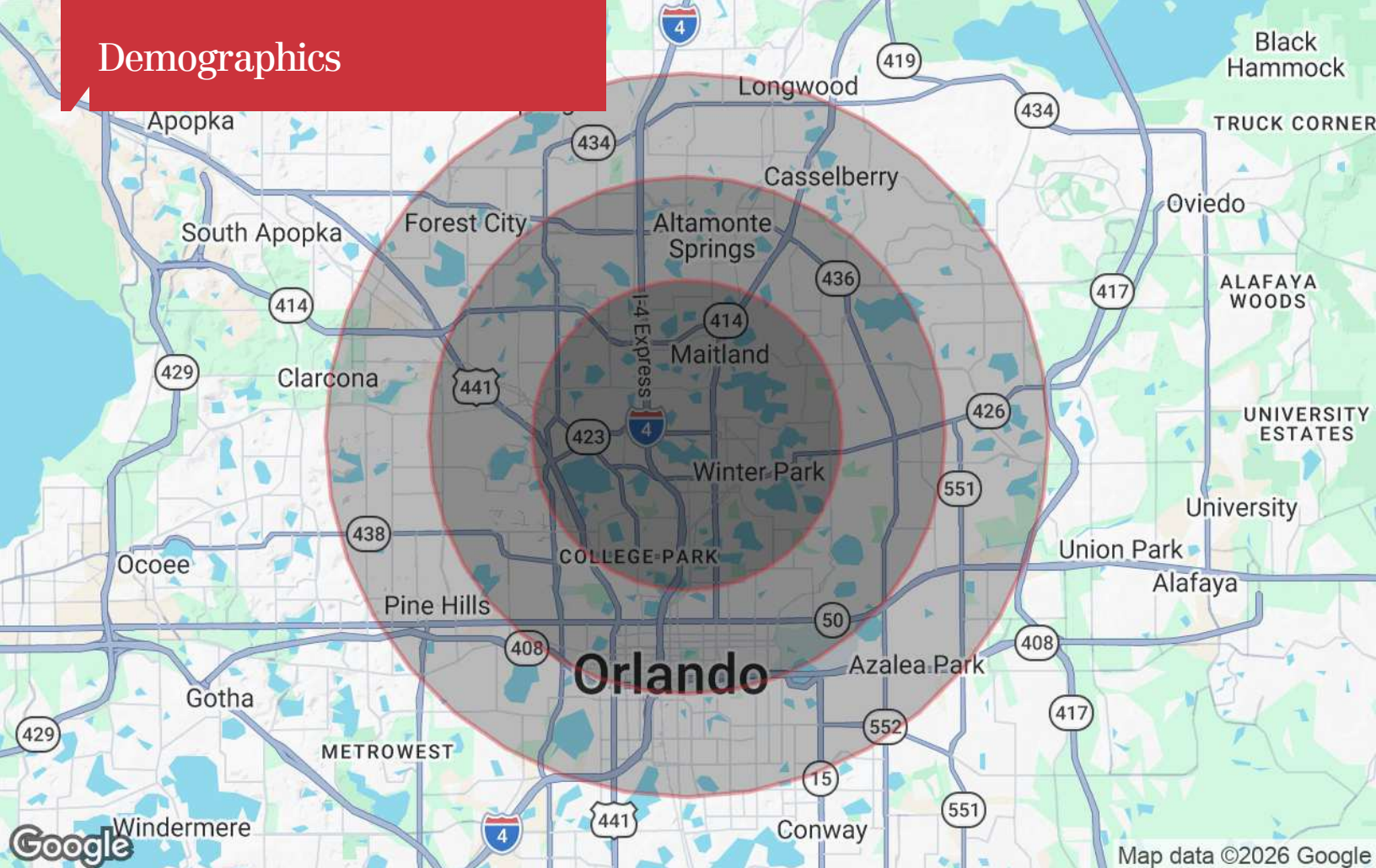
Location Maps



The information contained herein has been given to us by the owner of the property or other sources we deem reliable. We have no reason to doubt its accuracy, but we do not guarantee it. All information should be verified prior to purchase or lease. Unless otherwise noted, the property is being offered as-is, where is, with all faults.

1800 Pembroke Drive, Suite 350
Orlando, FL 32810
407 875 9989 tel
nairrealvest.com

Demographics



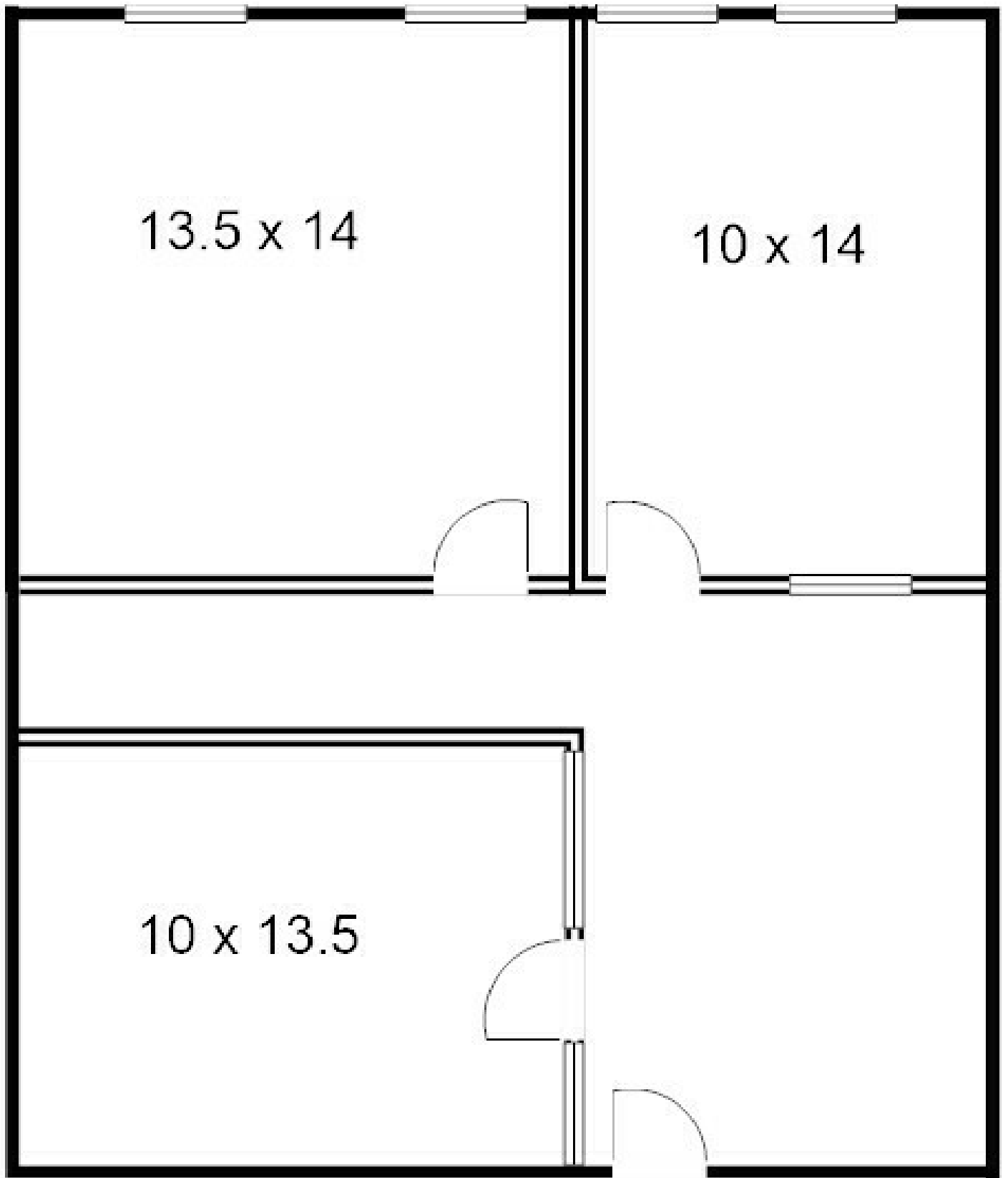
Population

	3 Miles	5 Miles	7 Miles
TOTAL POPULATION	80,793	275,550	552,635
MEDIAN AGE	42	41	41
MEDIAN AGE (MALE)	41	40	39
MEDIAN AGE (FEMALE)	43	42	42

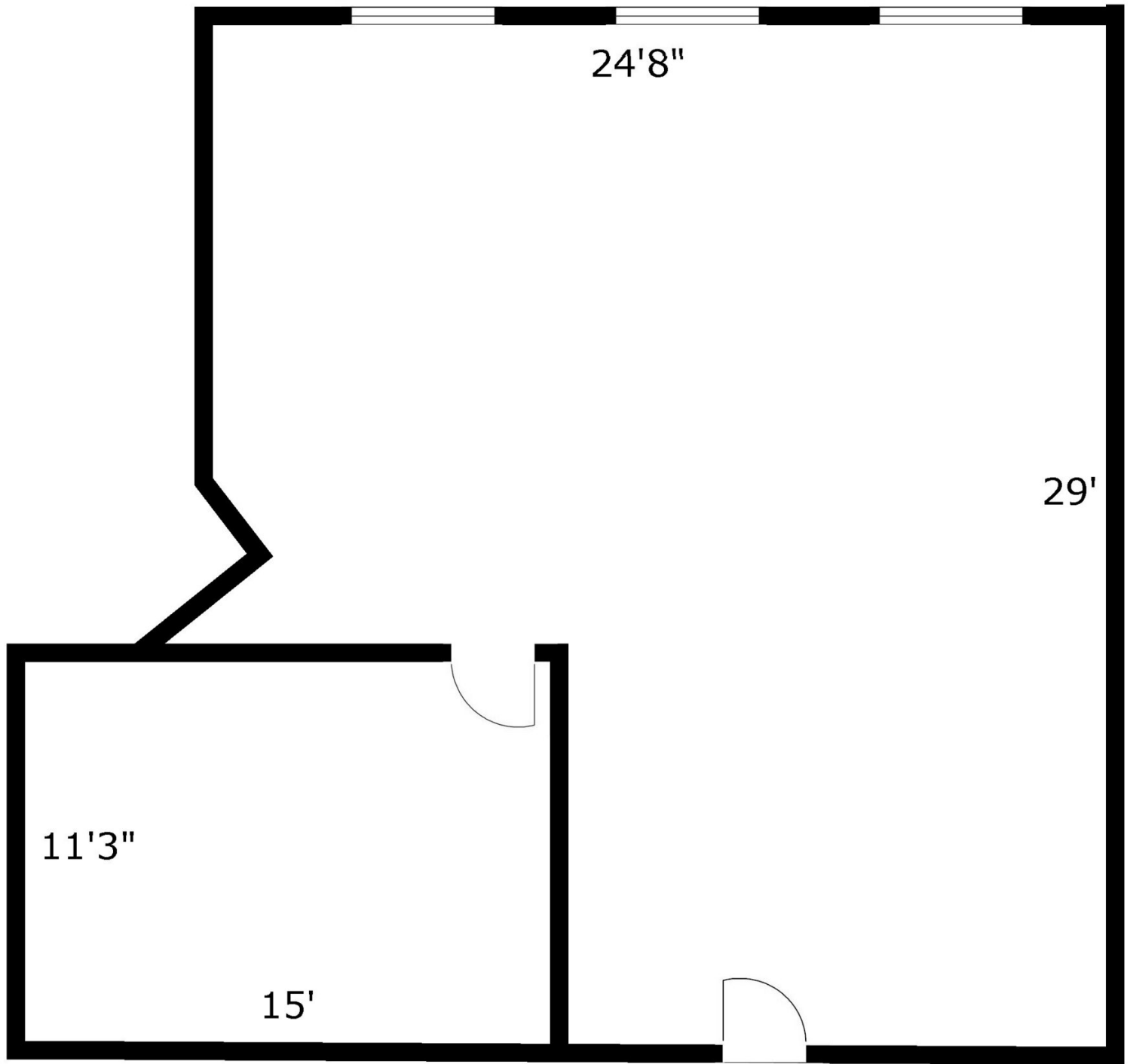
Households & Income

	3 Miles	5 Miles	7 Miles
TOTAL HOUSEHOLDS	35,980	122,499	227,080
# OF PERSONS PER HH	2.2	2.2	2.4
AVERAGE HH INCOME	\$132,782	\$107,373	\$94,609
AVERAGE HOUSE VALUE	\$615,943	\$486,886	\$412,694

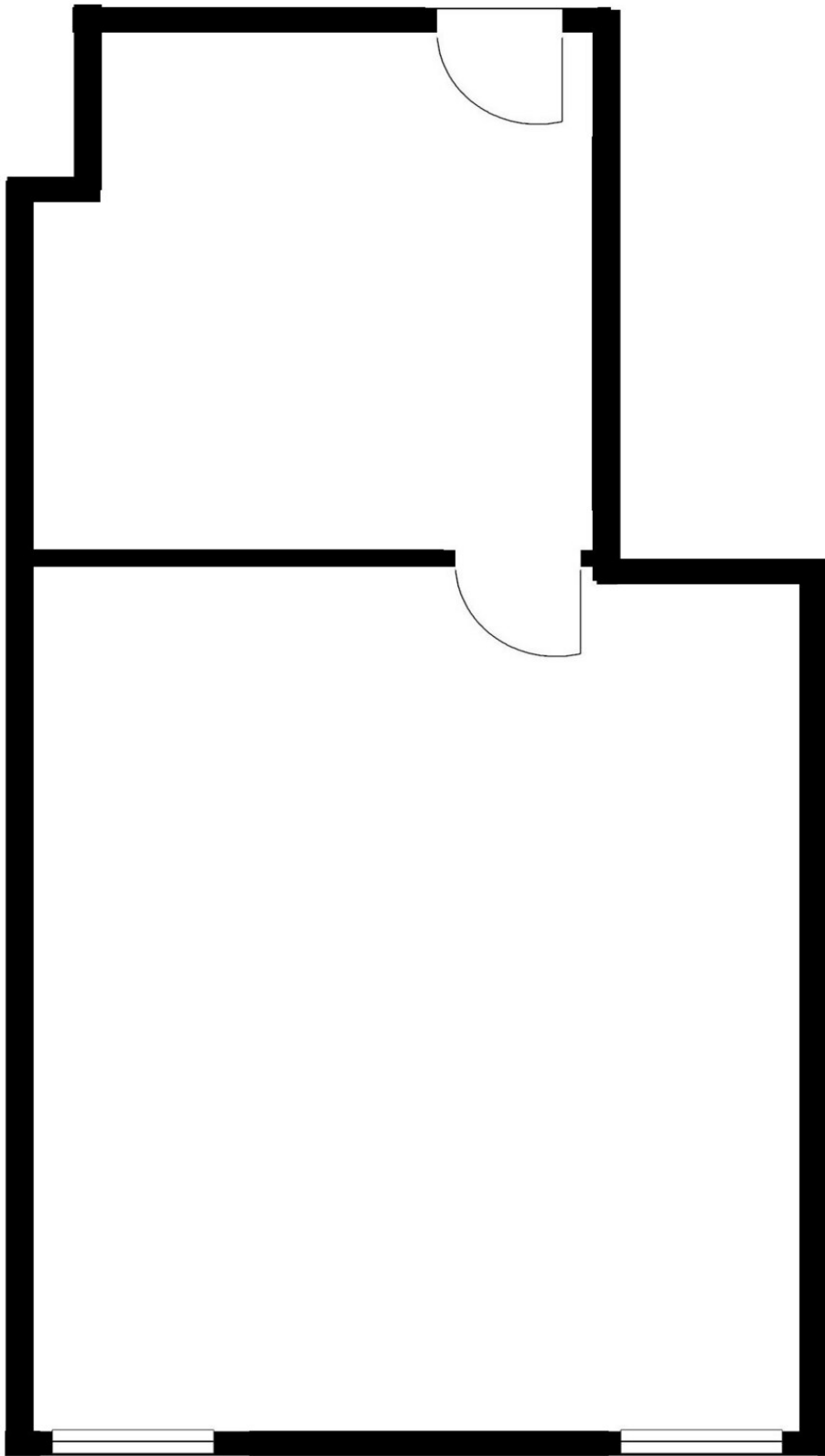
* Demographic data derived from 2020 ACS - US Census

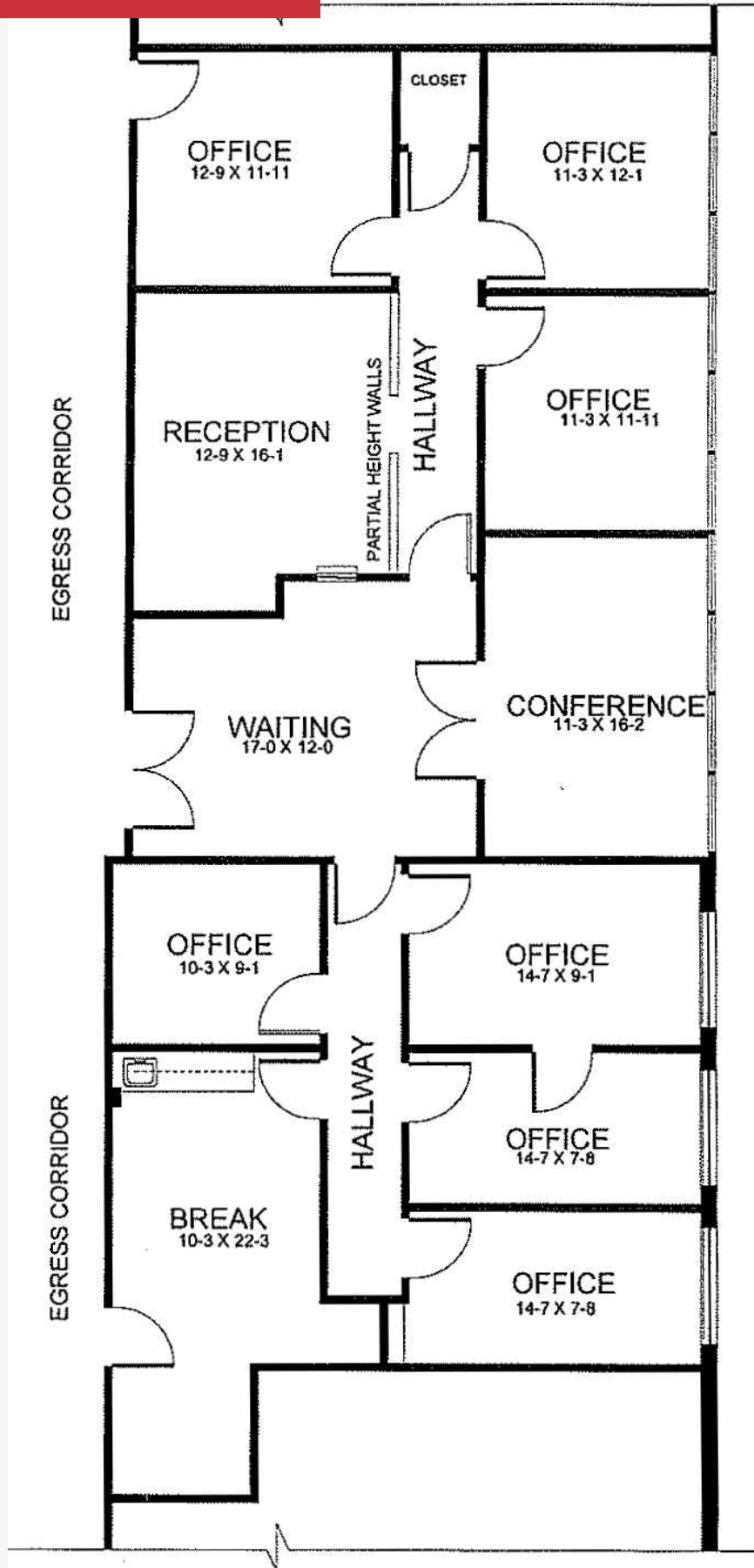


Suite 115 - 866± SF



Suite 209 - 487± SF





Suite 309 - 1,111± RSF

