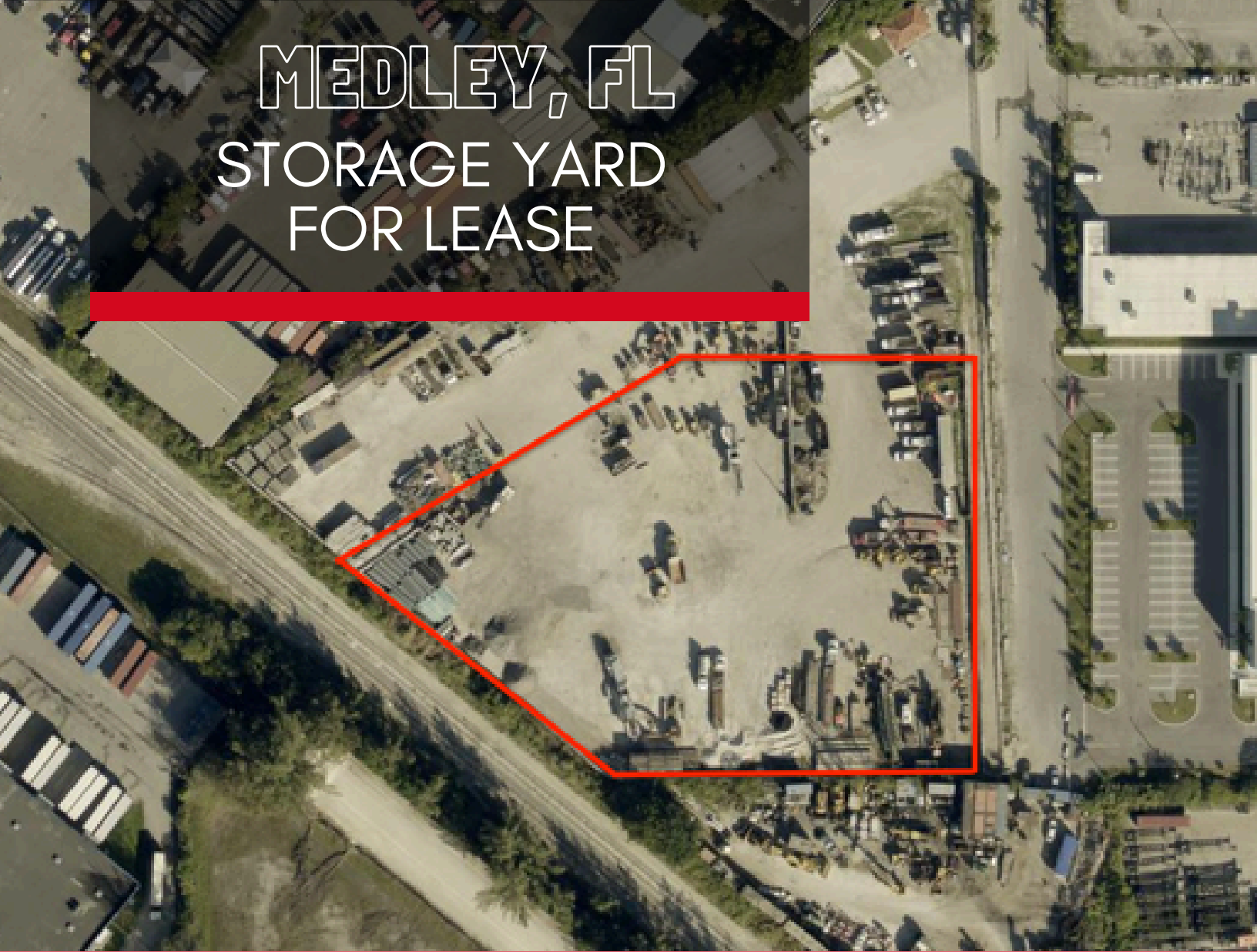


MEDLEY, FL STORAGE YARD FOR LEASE



11300 NW 97th Ave, Medley, FL 33178

2.49 ACRES WITH QUICK ACCESS TO HIGHWAY US 27

Positioned just west of US 27 this ±2.49 acre vacant parcel offers an exceptional opportunity for Industrial Outdoor Storage, truck parking, and fleet operations. The fully fenced yard is ideally suited for truck and trailer parking, equipment storage, contractor laydown, and outdoor storage uses. Zoned M 1 (Light Manufacturing), the property provides for a wide range of industrial users seeking secure outdoor space in one of Miami's most sought after logistics markets. Quick access to Okeechobee Road, Florida's Turnpike, Palmetto Expressway, and I 75.



Monica Cataluña, CCIM, ALC

Owner/Broker

954-812-1831

monica@koresrealty.com

TOWN OF MEDLEY, FLORIDA 33178



OFFERING SUMMARY

Lease Rate:	\$3.75/PSF
Lot Size:	2.49 Acres
Zoning:	M-1 (Light Manufacturing)
Location:	Town of Medley
Market:	Miami-Dade County



Monica Cataluña, CCIM, ALC

Owner/Broker

954-812-1831

monica@koresrealty.com

TOWN OF MEDLEY, FLORIDA 33178



Monica Cataluña, CCIM, ALC

Owner/Broker

954-812-1831

monica@koresrealty.com



Trusted Commercial Real Estate Services for Over 25 Years

CONTACT INFORMATION:



Monica Cataluña, CCIM, ALC

Owner/Broker

954-812-1831

monica@koresrealty.com

