

Sadler Rd & Round Lake Rd Land Development

Sadler Rd. Mt Dora, FL 32757

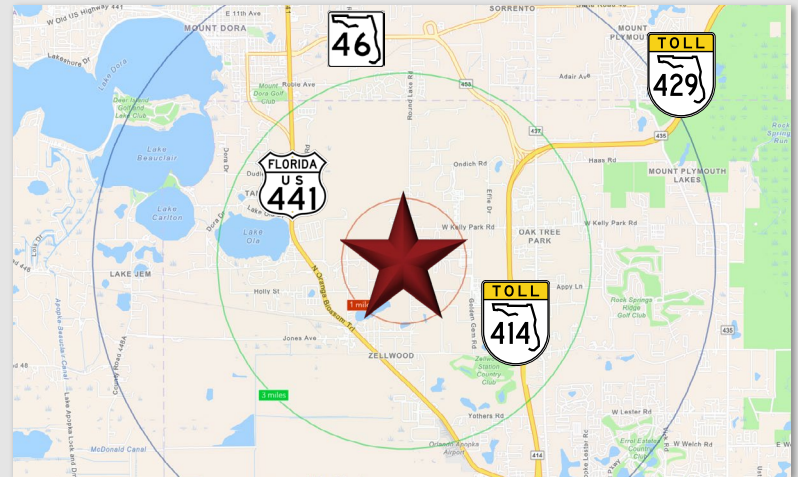
Palkiper
Commercial Real Estate Services
Licensed Real Estate Broker



Sale Price: \$1,145,000

LOCATION HIGHLIGHTS

This area is a hotspot for housing and development due to the expansion of the 429, providing access to the entire Orlando MSA. Situated just outside of Apopka near the corner of Sadler Rd and Round Lake Rd. Less than a 10-minute drive to Downtown Mount Dora, Kelly Park, the Apopka Amphitheater, and Fields of Fame. Nearby projects include a Publix shopping center on Kelly Park Road, The Floridian Town Center, and new retail along US Hwy 441.



LISTING HIGHLIGHTS

- **±8.16 acres** of usable land
- Zoned A-1 Agricultural with a Rural 1/5 FLU designation in Orange County
- Dry land, **cleared and leveled**
- Accessed from Holly Street
- Close proximity to future Orange County Public School site

2025 DEMOGRAPHICS	1-MILE	3-MILE	5-MILE
Population	702	15,222	52,358
Median HH Income	\$106,702	\$102,978	\$103,832
Average HH Income	\$136,100	\$130,639	\$128,173

CONTACT FOR MORE INFORMATION

Shellie Sevor, JD

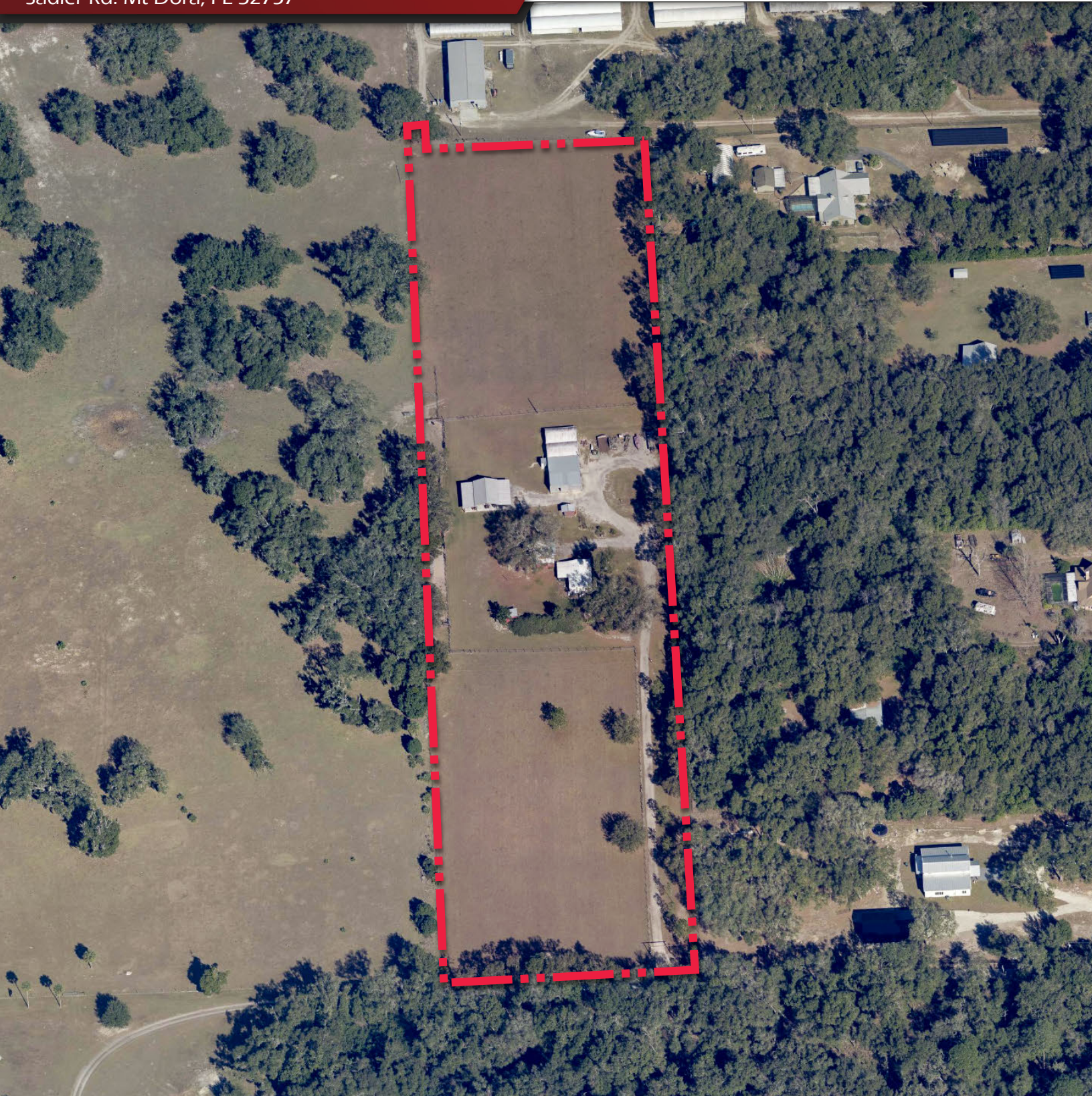
(321) 377-1928

Shellie@palkiper.com

Sadler Rd & Round Lake Rd Land Development

Sadler Rd. Mt Dora, FL 32757

 **Palkiper**
Commercial Real Estate Services
Licensed Real Estate Broker



CONTACT FOR MORE INFORMATION

Shellie Sevor, JD

(321) 377-1928

Shellie@palkiper.com

Palkiper has made every effort to obtain the information regarding this property from sources deemed reliable. However, we cannot warrant the complete accuracy thereof subject to errors, omissions, change of price, rental, or other conditions, prior sale, lease or financing or withdrawal without notice.
Licensed Real Estate Broker.

06/02/26 13:19