

Renaissance Park - Formerly Central State Hospital Campus
Residential Investment Opportunity
803 Wright Street
Milledgeville, GA 31061



Summary

Area Info

Photos

Aerial

Site Map



CONTACT

Patty Burns, CCIM, ALC

478-746-9421 Office
478-951-5100 Cell
patty@fickling.com
www.georgiacommercialrealestate.net

Trip Wilhoit, CCIM, ALC

478-746-9421 Office
478-960-4080 Cell
trip@fickling.com

Jonathan Schuemann

478-746-9421 Office
561-676-4633 Cell
jonathan@fickling.com



577 Mulberry St, Suite 1100
Macon, GA 31201
478.746.9421 Office
<https://commercial.fickling.com>

This information is from resources deemed to be reliable and is subject to change without notice. No warranties or guarantees for accuracy are made by Fickling and Company.

PROPERTY INFORMATION

PROPERTY

Property Address: 803 Wright Street
Milledgeville, GA 31061

County: Baldwin

Total Size: 2,073 SF

Year Built: 1965

Duplex Composition: Side A (Leased) - 2 bed/1 bath
Side B - 2 bed/1.5 bath

Utilities: All Available

SITE

Site Size: ±0.57 Acres
(Subject to Change Upon
Survey Completion)

Parcel ID: 072 001A

SALE PRICE: \$250,000.00

Demographics 2025	3 Miles	5 Miles	10 Miles
Population	17,517	26,130	43,683
Avg HH Income	\$53,387	\$70,944	\$92,576
Median Age	32.0	33.7	37.4

CONTACT

Patty Burns, CCIM, ALC
 478-746-9421 Office
 478-951-5100 Cell
 patty@fickling.com
www.georgiacommercialrealestate.net

Trip Wilhoit, CCIM, ALC
 478-746-9421 Office
 478-960-4080 Cell
 trip@fickling.com

Jonathan Schuemann
 478-746-9421 Office
 561-676-4633 Cell
 jonathan@fickling.com



577 Mulberry St, Suite 1100
 Macon, GA 31201
 478.746.9421 Office
<http://commercial.fickling.com>

PROPERTY INFORMATION

NOTES

Duplex property is currently used as a long-term rental home, as well as a destination rental. Duplex has one electric meter and one water meter. Rent for the leased unit is \$900/month and includes utilities. Detailed financials available upon request, contact agent for details.

The residence is a 2,073 SF duplex. The long-term lease unit is a 2 bedroom/1 bath space, and the destination rental unit is a 2 bedroom/1.5 bath space. Both units have a combination of LVP and hardwood flooring.

LOCATION

Property is located in Renaissance Park (formerly Central State Hospital). Convenient to Fall Line Freeway, downtown Milledgeville, and Vinson Highway. Neighbors in the area include the Georgia Department of Veterans Affairs, the War Veterans Home, Downtown Milledgeville, Georgia College and State University, Georgia Military College, Dairy Queen, and McDonalds.



CONTACT

Patty Burns, CCIM, ALC

478-746-9421 Office
478-951-5100 Cell
patty@fickling.com
www.georgiacommercialrealestate.net

Trip Wilhoit, CCIM, ALC

478-746-9421 Office
478-960-4080 Cell
trip@fickling.com

Jonathan Schuemann

478-746-9421 Office
561-676-4633 Cell
jonathan@fickling.com



577 Mulberry St, Suite 1100
Macon, GA 31201
478.746.9421 Office
https://commercial.fickling.com

Renaissance Park - Formerly Central State Hospital Campus
Residential Investment Opportunity
803 Wright Street
Milledgeville, GA 31061



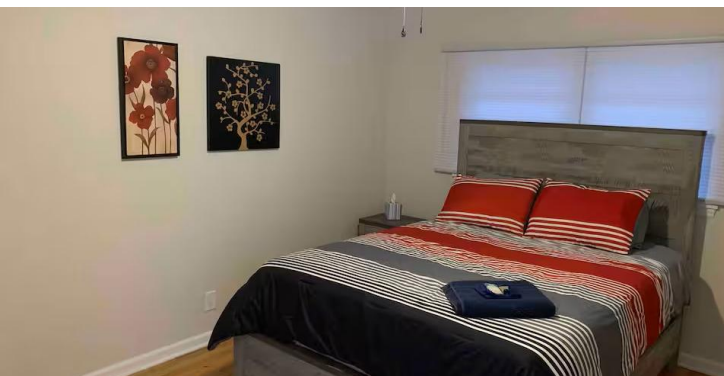
Summary

Area Info

Photos

Aerial

Site Map



CONTACT

Patty Burns, CCIM, ALC
478-746-9421 Office
478-951-5100 Cell
patty@fickling.com
www.georgiacommercialrealestate.net

Trip Wilhoit, CCIM, ALC
478-746-9421 Office
478-960-4080 Cell
trip@fickling.com

Jonathan Schuemann
478-746-9421 Office
561-676-4633 Cell
jonathan@fickling.com



577 Mulberry St, Suite 1100
Macon, GA 31201
478.746.9421 Office
<https://commercial.fickling.com>

Renaissance Park - Formerly Central State Hospital Campus
Residential Investment Opportunity
803 Wright Street
Milledgeville, GA 31061



Summary

Area Info

Photos

Aerial

Site Map



CONTACT

Patty Burns, CCIM, ALC
478-746-9421 Office
478-951-5100 Cell
patty@fickling.com
www.georgiacommercialrealestate.net

Trip Wilhoit, CCIM, ALC
478-746-9421 Office
478-960-4080 Cell
trip@fickling.com

Jonathan Schuemann
478-746-9421 Office
561-676-4633 Cell
jonathan@fickling.com



577 Mulberry St, Suite 1100
Macon, GA 31201
478.746.9421 Office
https://commercial.fickling.com

This information is from resources deemed to be reliable and is subject to change without notice. No warranties or guarantees for accuracy are made by Fickling and Company.

