

**Renaissance Park - Formerly Central State Hospital Campus**  
**Income-Producing Residential Rental Opportunity**  
**200 Jones Road**  
**Milledgeville, GA 31061**



Summary

Area Info

Photos

Aerial

Site Map



**CONTACT**

**Patty Burns, CCIM, ALC**

478-746-9421 Office

478-951-5100 Cell

[patty@fickling.com](mailto:patty@fickling.com)

[www.georgiacommercialrealestate.net](http://www.georgiacommercialrealestate.net)

**Trip Wilhoit, CCIM, ALC**

478-746-9421 Office

478-960-4080 Cell

[trip@fickling.com](mailto:trip@fickling.com)

**Jonathan Schuemann**

478-746-9421 Office

561-676-4633 Cell

[jonathan@fickling.com](mailto:jonathan@fickling.com)



577 Mulberry St, Suite 1100

Macon, GA 31201

478.746.9421 Office

<https://commercial.fickling.com>

This information is from resources deemed to be reliable and is subject to change without notice. No warranties or guarantees for accuracy are made by Fickling and Company.

## PROPERTY INFORMATION

### PROPERTY

**Property Address:** 200 Jones Road  
 Milledgeville, GA 31061

**County:** Baldwin

**Total Size:** 1,468 SF

**Year Built:** 1955

**Taxes:** \$2,967.69 (2025 est.)

**Utilities:** All Available

### SITE

**Site Size:** 3.7 Acres

**Parcel ID:** 072 0B1

**SALE PRICE: \$250,000.00**

Demographics 2025	3 Miles	5 Miles	10 Miles
Population	17,645	26,079	43,672
Avg HH Income	\$53,481	\$70,820	\$92,652
Median Age	32.0	33.7	37.4

**CONTACT**

<p><b>Patty Burns, CCIM, ALC</b>                  478-746-9421 Office                  478-951-5100 Cell                  patty@fickling.com                  www.georgiacommercialrealestate.net</p>	<p><b>Trip Wilhoit, CCIM, ALC</b>                  478-746-9421 Office                  478-960-4080 Cell                  trip@fickling.com</p>	<p><b>Jonathan Schuemann</b>                  478-746-9421 Office                  561-676-4633 Cell                  jonathan@fickling.com</p>	 <p>577 Mulberry St, Suite 1100                  Macon, GA 31201                  478.746.9421 Office                  https://commercial.fickling.com</p>
---	--	---	---

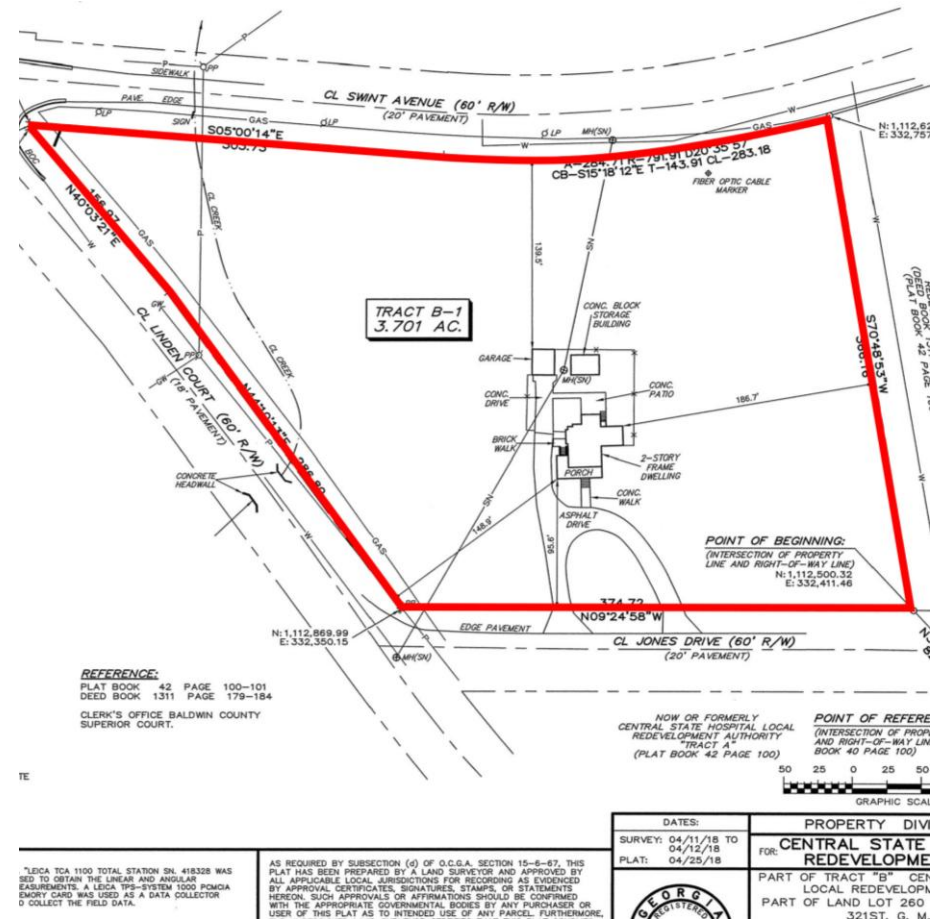
## PROPERTY INFORMATION

### NOTES

Property is currently used as a destination rental home, and generated an income of \$28,112 in 2025 for the current owner. Property has been remodeled with all new electric, plumbing, HVAC, and refinished original hardwood floors. Detailed financials available upon request, contact agent for details. The residence is a 1,468 SF single-story 3 bedroom/2.5 bath home with a den, dining room, kitchen, laundry, screened porch, rear stoop, and fenced back yard. Two outbuildings also on property - a brick storage building, and a wooden carriage house (not used).

### LOCATION

Property is located in Renaissance Park (formerly Central State Hospital). Convenient to Fall Line Freeway, downtown Milledgeville, and Vinson Highway. Neighbors in the area include the Georgia Department of Veterans Affairs, the War Veterans Home, Downtown Milledgeville, Georgia College and State University, Georgia Military College, Dairy Queen, and McDonalds.



### CONTACT

**Patty Burns, CCIM, ALC**  
 478-746-9421 Office  
 478-951-5100 Cell  
 patty@fickling.com  
 www.georgiacommercialrealestate.net

**Trip Wilhoit, CCIM, ALC**  
 478-746-9421 Office  
 478-960-4080 Cell  
 trip@fickling.com

**Jonathan Schuemann**  
 478-746-9421 Office  
 561-676-4633 Cell  
 jonathan@fickling.com



577 Mulberry St, Suite 1100  
 Macon, GA 31201  
 478.746.9421 Office  
<https://commercial.fickling.com>

Renaissance Park - Formerly Central State Hospital Campus  
Income-Producing Residential Rental Opportunity  
200 Jones Road  
Milledgeville, GA 31061



Summary

Area Info

Photos

Aerial

Site Map



CONTACT

**Patty Burns, CCIM, ALC**  
478-746-9421 Office  
478-951-5100 Cell  
patty@fickling.com  
www.georgiacommercialrealestate.net

**Trip Wilhoit, CCIM, ALC**  
478-746-9421 Office  
478-960-4080 Cell  
trip@fickling.com

**Jonathan Schuemann**  
478-746-9421 Office  
561-676-4633 Cell  
jonathan@fickling.com



577 Mulberry St, Suite 1100  
Macon, GA 31201  
478.746.9421 Office  
<https://commercial.fickling.com>

This information is from resources deemed to be reliable and is subject to change without notice. No warranties or guarantees for accuracy are made by Fickling and Company.

Renaissance Park - Formerly Central State Hospital Campus  
Income-Producing Residential Rental Opportunity  
200 Jones Road  
Milledgeville, GA 31061



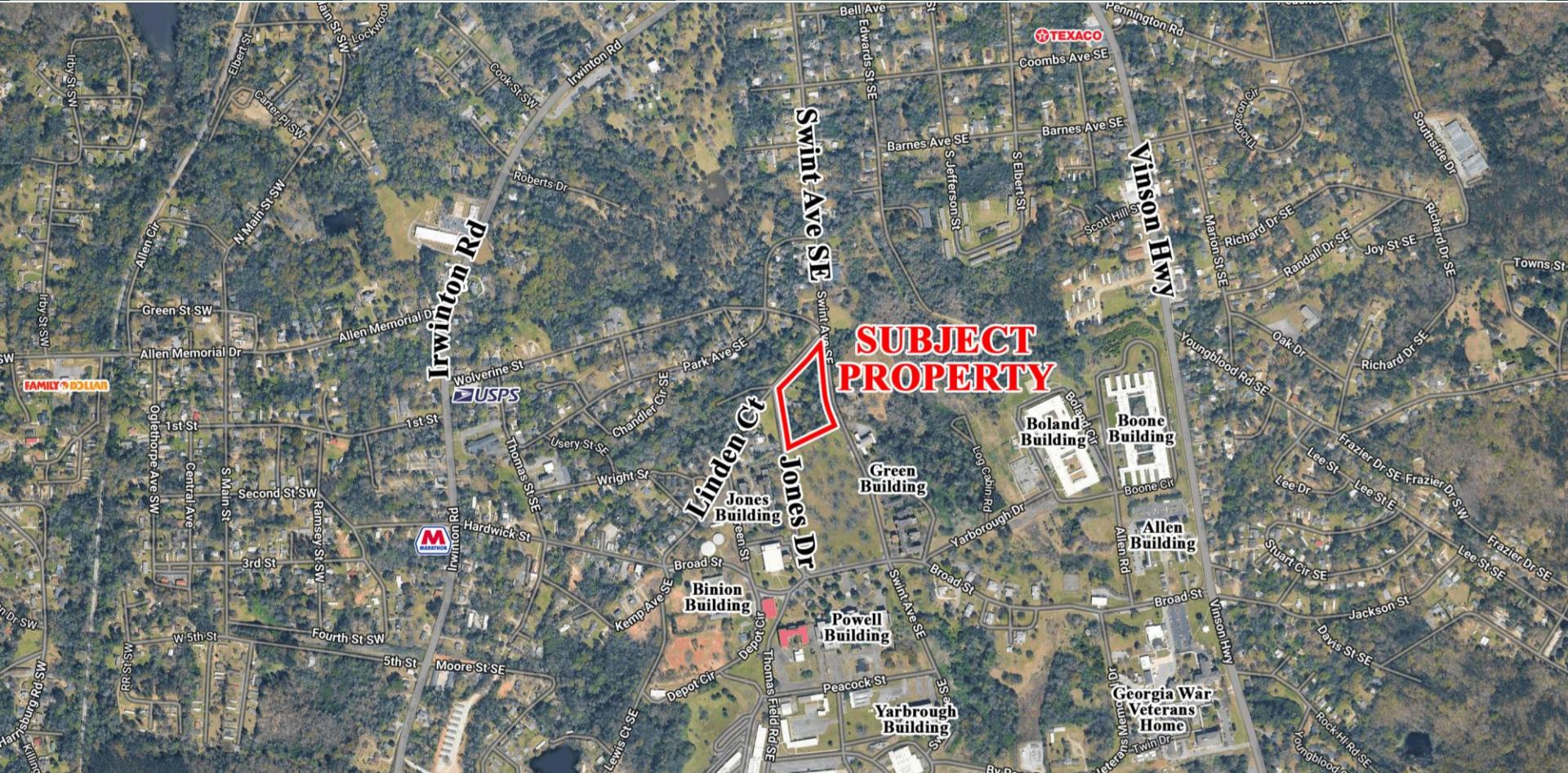
Summary

Area Info

Photos

Aerial

Site Map



CONTACT

**Patty Burns, CCIM, ALC**  
478-746-9421 Office  
478-951-5100 Cell  
patty@fickling.com  
www.georgiacommercialrealestate.net

**Trip Wilhoit, CCIM, ALC**  
478-746-9421 Office  
478-960-4080 Cell  
trip@fickling.com

**Jonathan Schuemann**  
478-746-9421 Office  
561-676-4633 Cell  
jonathan@fickling.com



577 Mulberry St, Suite 1100  
Macon, GA 31201  
478.746.9421 Office  
https://commercial.fickling.com

Renaissance Park - Formerly Central State Hospital Campus  
Income-Producing Residential Rental Opportunity  
200 Jones Road  
Milledgeville, GA 31061



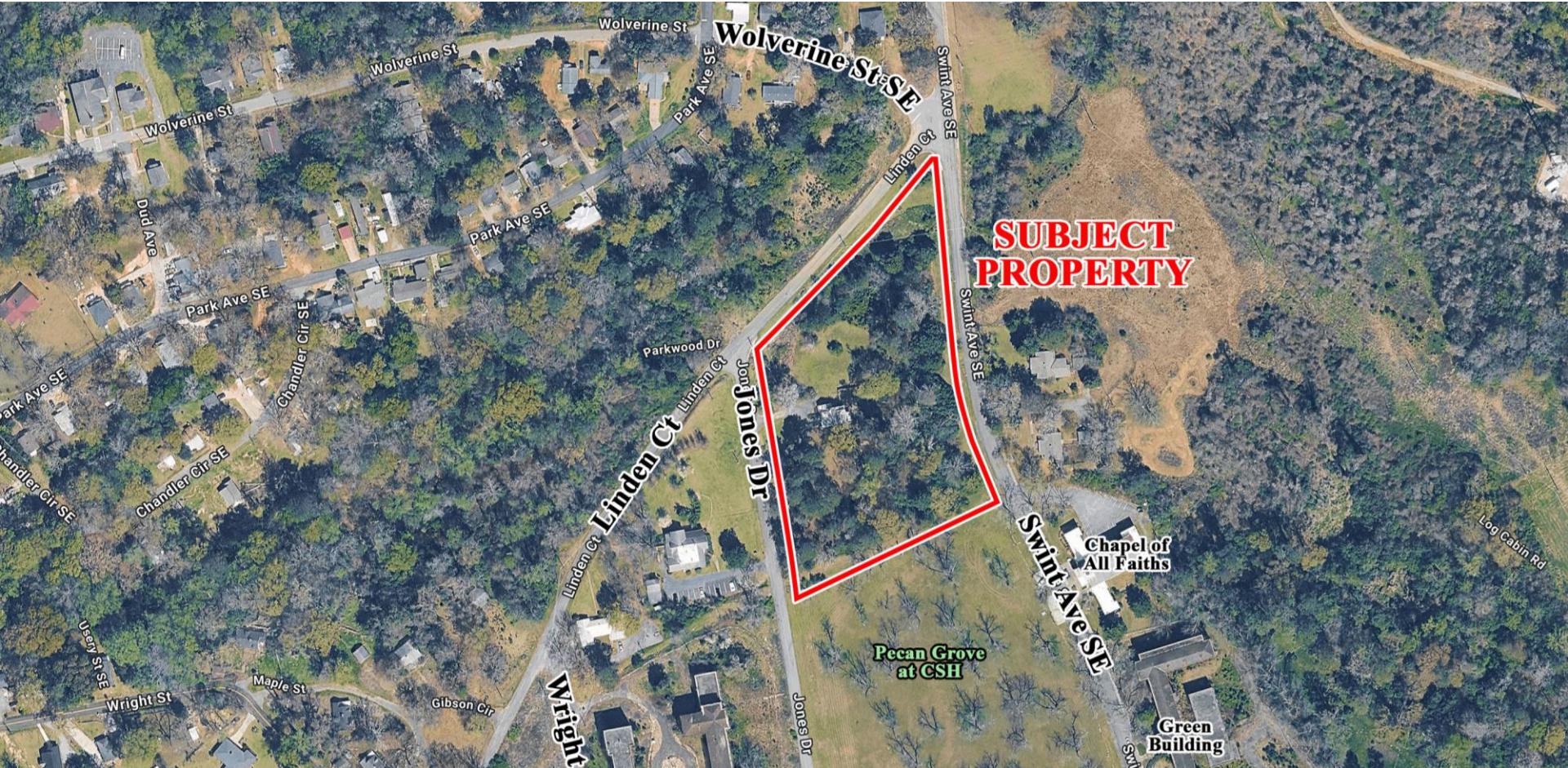
Summary

Area Info

Photos

Aerial

Site Map



CONTACT

**Patty Burns, CCIM, ALC**  
478-746-9421 Office  
478-951-5100 Cell  
patty@fickling.com  
www.georgiacommercialrealestate.net

**Trip Wilhoit, CCIM, ALC**  
478-746-9421 Office  
478-960-4080 Cell  
trip@fickling.com

**Jonathan Schuemann**  
478-746-9421 Office  
561-676-4633 Cell  
jonathan@fickling.com



577 Mulberry St, Suite 1100  
Macon, GA 31201  
478.746.9421 Office  
<https://commercial.fickling.com>