

FOR LEASE

36,375 SF INDUSTRIAL FACILITY

19994 Independence Blvd

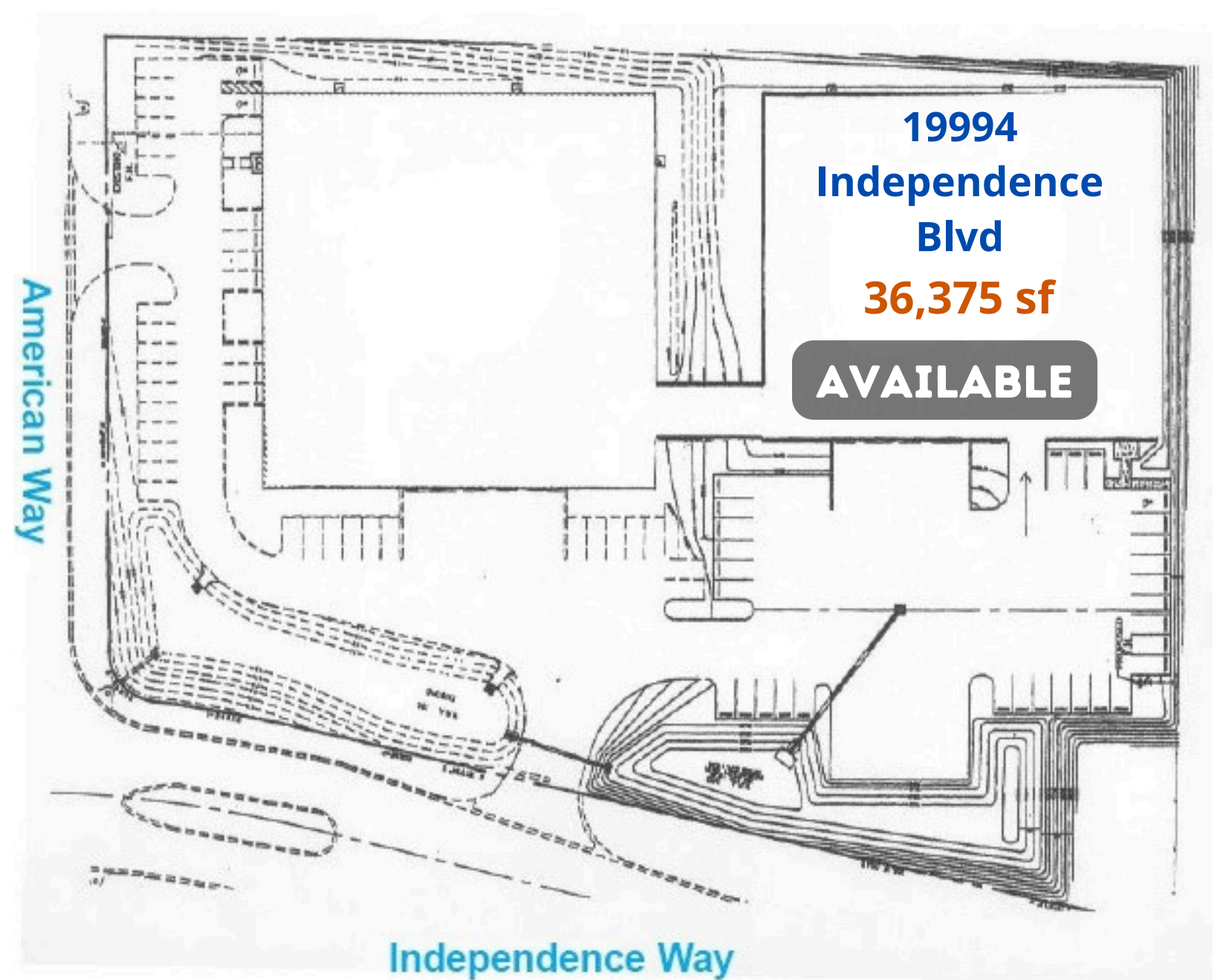
Groveland (Orlando MSA), FL 34736



Asking Rate \$10.50 PSF NNN

PROPERTY OVERVIEW

- 36,375 Building Square Feet
- Zoned for M-1
- 2.14 Acre Lot Size
- Steel Construction (Butler Building)
- Built in 2001



ESTHER GRILLER

(407) 580-9313

esther@investfloridaproperty.com

36,375 SF FOR LEASE

19994 Independence Blvd

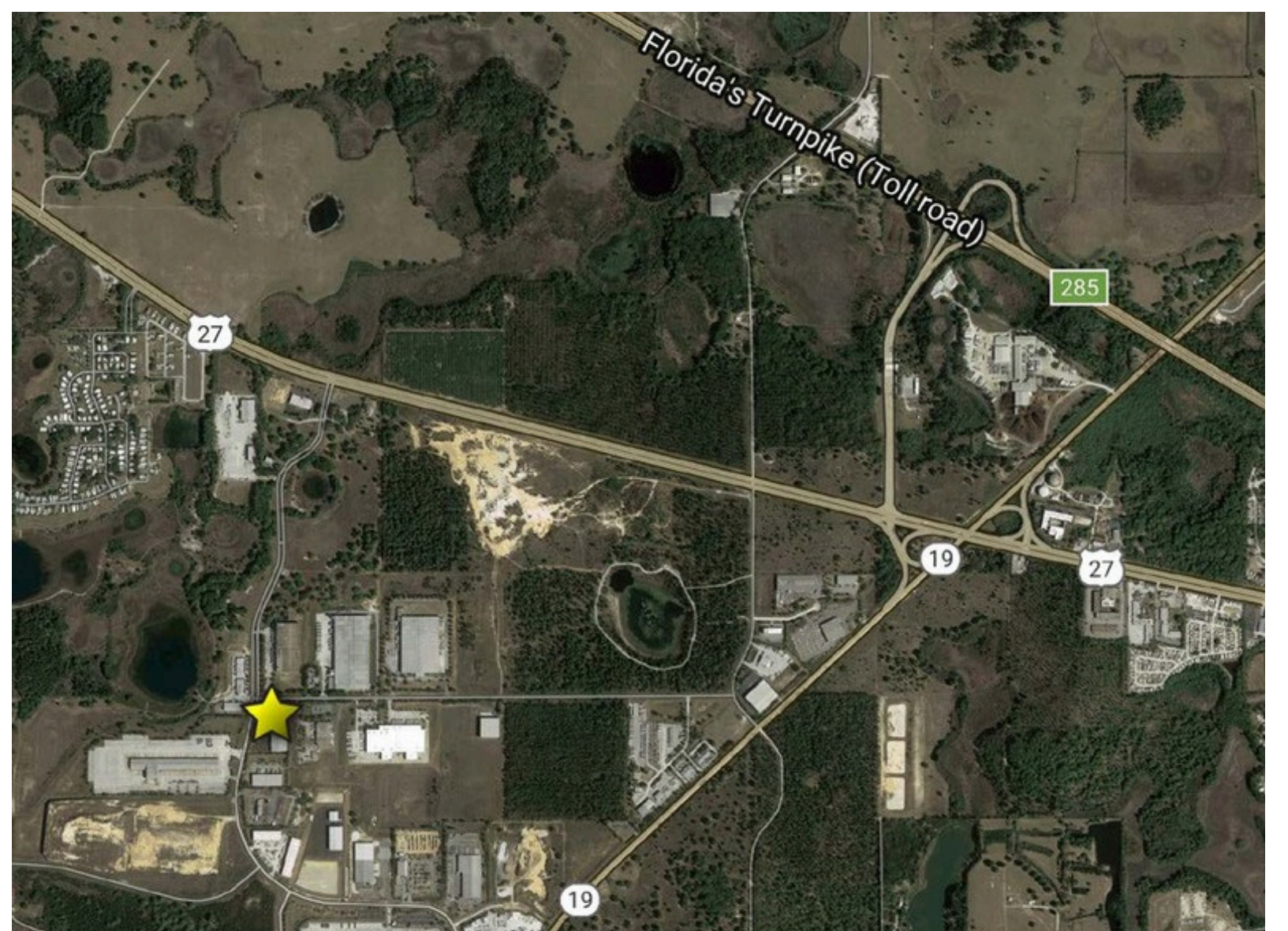
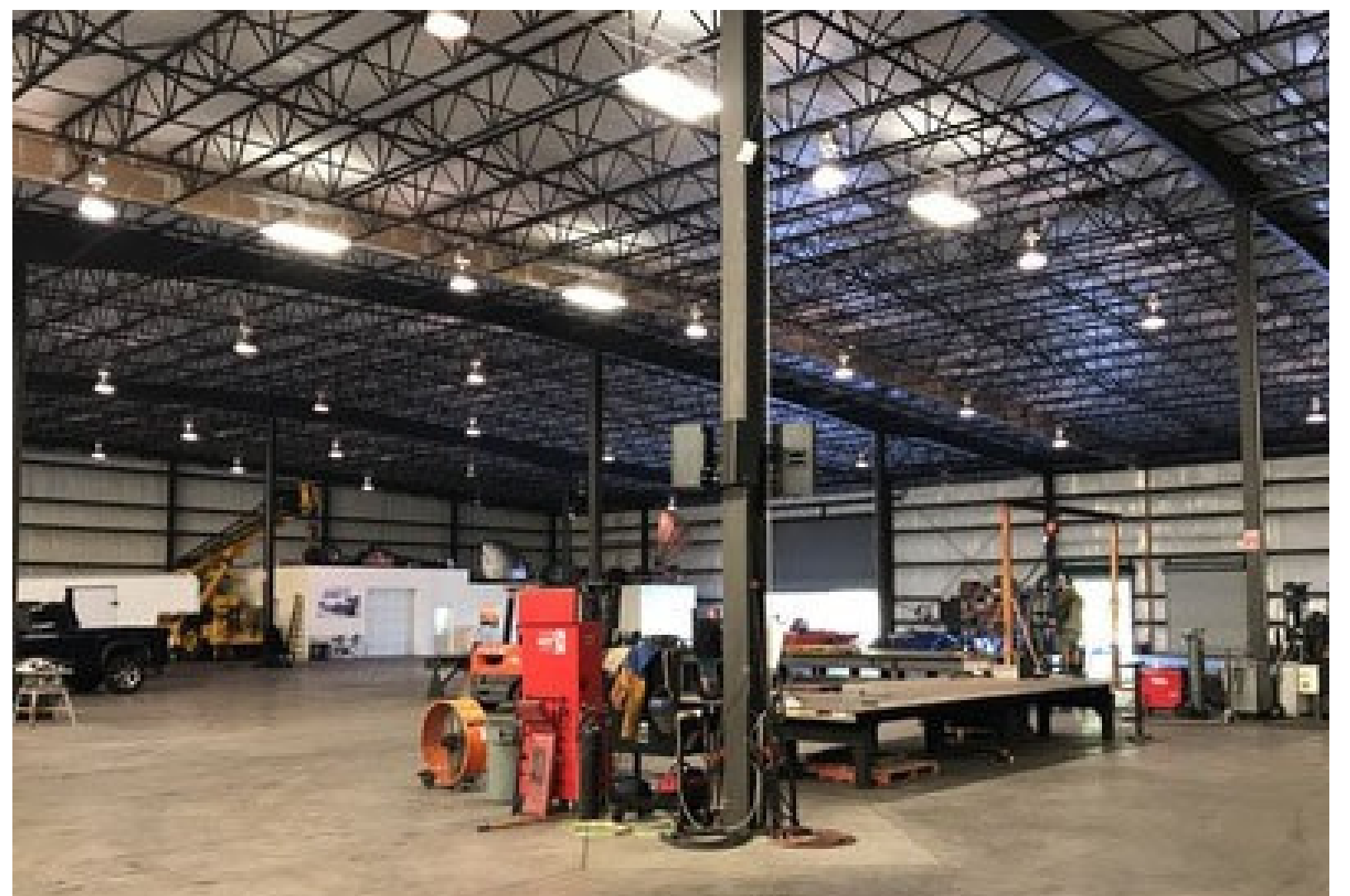
PROPERTY HIGHLIGHTS

- 4 Dock High-Doors with Levelators
- 1 24' W x 20' H Drive-Thru Bay
- Steel Construction (Butler Building)
- Three-Phase Electric Power
- 50' x 40' Column Spacing
- 24' Ceiling Heights
- 35 Surface Parking Spaces
- Class IV Sprinkler System (High Density)
- Office Space built with Structural Insulated Roof Panels (designed to carry up to 1 Ton)

LOCATION HIGHLIGHTS

- Situated in the Orlando MSA, along with Seminole, Osceola, and Orange County
- Facility is ideally located for statewide distribution in the Christopher C. Ford Commerce Park adjacent to US Highway 27, the Florida Turnpike, and SR 19

- * Clermont/Highway 50 - 9 Miles
- * Leesburg Int'l Airport - 19 Miles
- * Interstate 75 - 26 Miles
- * Interstate 4 - 29 Miles
- * Downtown Orlando - 30 Miles
- * Orlando Int'l Airport - 40 Miles



ESTHER GRILLER

(407) 580-9313

esther@investfloridaproperty.com