

6512 OLD CHENEY HWY, ORLANDO FL 32807

AUTO SHOP & TOWING BUSINESS + REAL ESTATE | FHP APPROVED | OPERATING SINCE 2000



6512 OLD CHENEY HWY, ORLANDO FL 32807

COMPANY | COLDWELL BANKER REALTY



6512 OLD CHENEY HWY, ORLANDO FL 32807

**AUTO SHOP & TOWING BUSINESS + REAL ESTATE | FHP
APPROVED | OPERATING SINCE 2000**

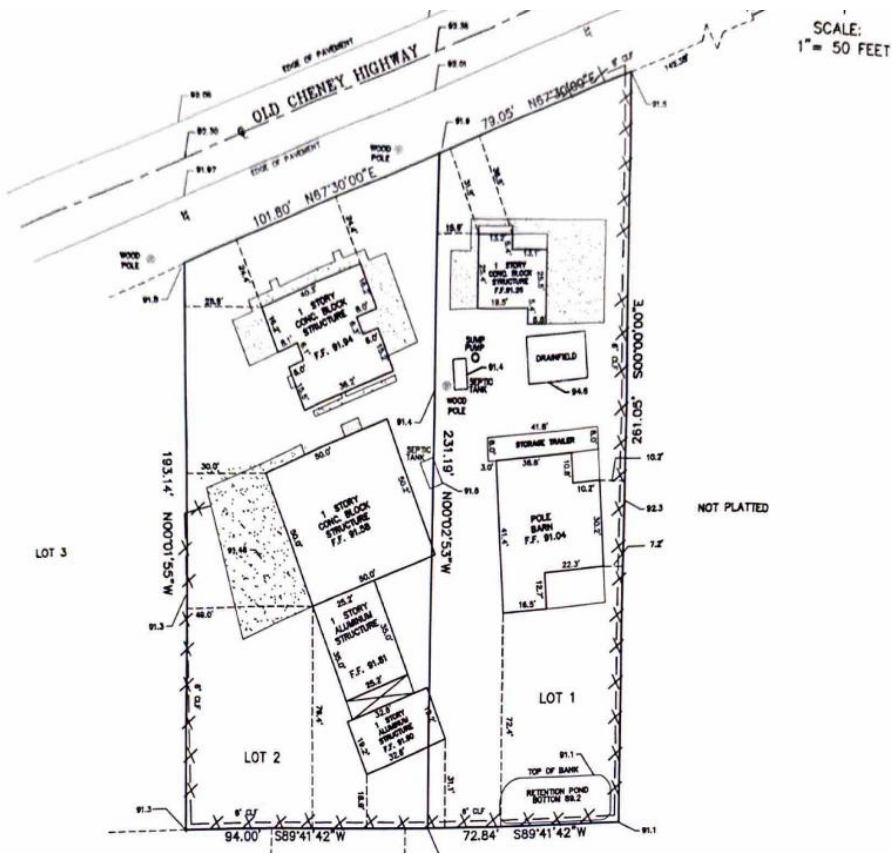
Coldwell Banker Commercial is pleased to present a rare opportunity to acquire a fully operational auto shop and towing business together with the underlying real estate in the Orlando, Florida market. This offering delivers an acquirer immediate operational continuity combined with durable, hard-asset real estate value - in a single transaction.

The towing division is Florida Highway Patrol (FHP) approved - Troop D - with 8 consecutive years of authorized service, representing a significant barrier to entry and a valuable institutional relationship. The auto shop has operated continuously at this location since 2000, establishing deep-rooted market presence, customer relationships, and a proven track record.

This sale includes two parcels totaling 1.38 acres: the main operating facility at 6512 Old Cheney Hwy (0.87 ac) and an additional fenced storage lot at the corner address of 6500 Old Cheney Hwy (0.51 ac) - providing critical impound and fleet storage capacity that is essential to towing operations. In-place month-to-month tenants generate supplemental income of approximately \$27,000 AGI annually.

Offered at: \$3,195,000 (Business + Real Estate — Two Parcels, 1.38 Acres Total)



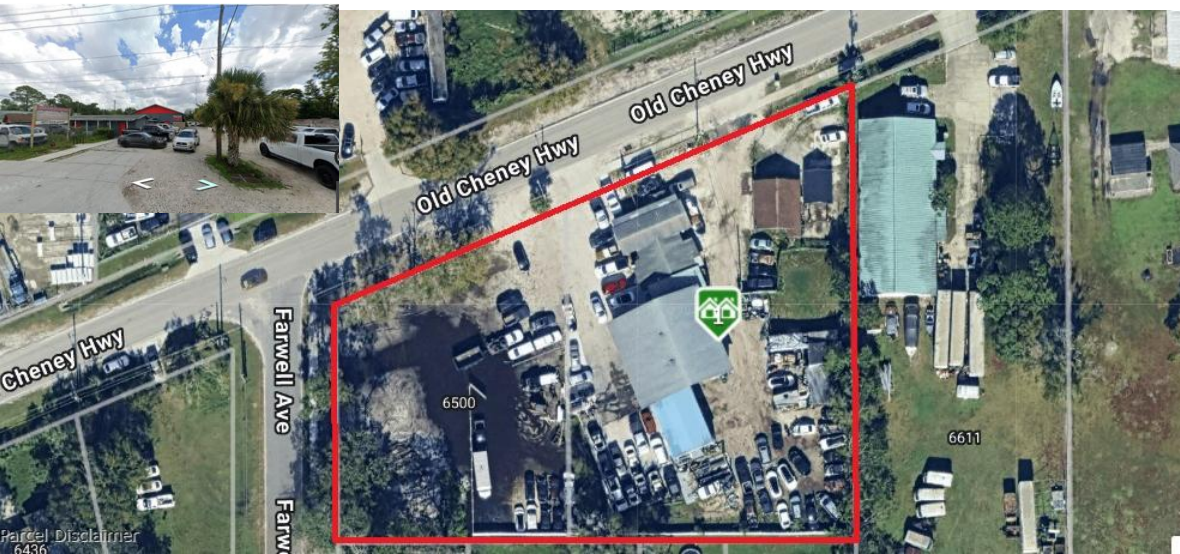


6512 OLD CHENEY HWY, ORLANDO FL 32807

Highlights:

- FHP Troop D Rotation — 8 Years Active | Designation Transfers with Business
- Operating at Location Since 2000 – 25+ years of market presence and customer base
- Auto Shop + Towing – Dual-revenue operation with immediate operational continuity
- Two-Parcel Sale – 6512 Old Cheney Hwy (main facility)(0.87 ac) + 6500 Old Cheney Hwy (corner storage lot, 0.51 ac)
- Total Land: 1.38 Acres – Significant land position with fenced impound/storage capacity
- Supplemental Income (~\$27,000 AGI) – In-place month-to-month tenants providing additional revenue
- High Barrier-to-Entry Industry – Licensing, FHP relationships, and operational scale limit new competition
- Scalable Platform – Expand towing fleet, services, or operational efficiency

Offered at: \$3,195,000 (Business + Real Estate – Two Parcels, 1.38 ac total)



**MIKE
GIORDANO**

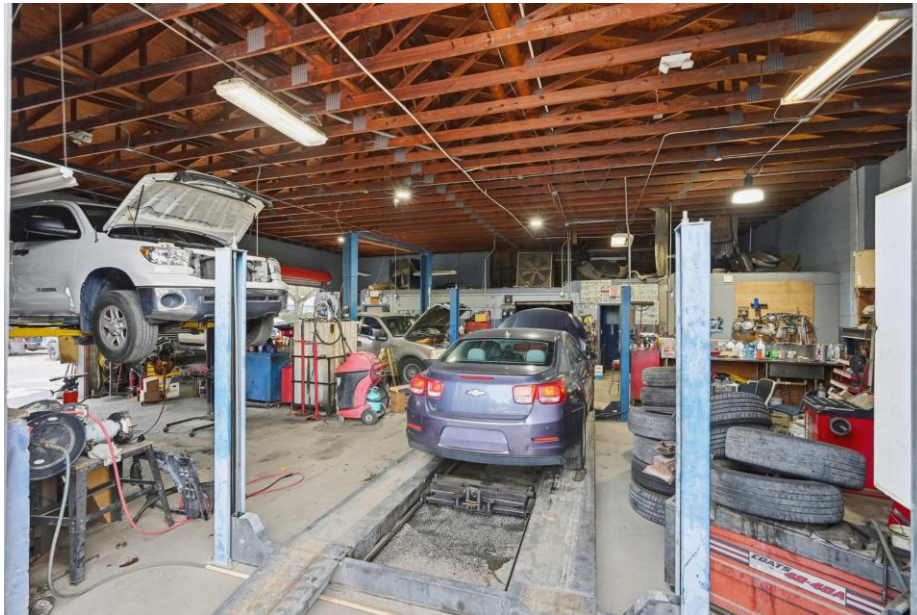
Coldwell Banker
400 S Park Ave Ste 210,
Winter Park, FL 32789-
4320

C. 321.418.1225
mike@mggteam.com



The property information herein is derived from various sources that may include, but not be limited to, county records and the Multiple Listing Service, and it may include approximations. Although the information is believed to be accurate, it is not warranted and you should not rely upon it without personal verification. Affiliated real estate agents are independent contractor sales associates, not employees. ©2022 Coldwell Banker. All Rights Reserved. Coldwell Banker and the Coldwell Banker Realty logos are trademarks of Coldwell Banker Real Estate LLC. The Coldwell Banker® System is comprised of company owned offices which are owned by a subsidiary of Realogy Brokerage Group LLC and franchised offices which are independently owned and operated. The Coldwell Banker System fully supports the principles of the Equal Opportunity Act. 22GG69_NAT_6/22

Property Photos — Shop Interiors



Property Photos — Site & Exterior



Property Photos — Tow Fleet & Operations

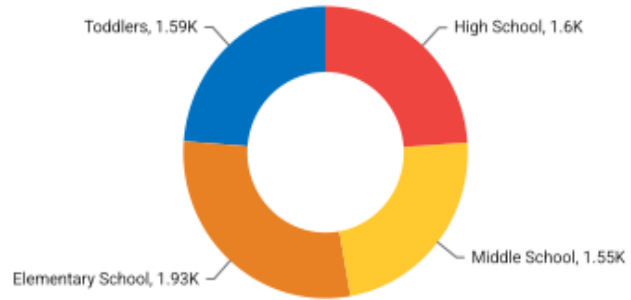


Population of Children by Age Group in 32807

This chart shows the distribution of the population of children by age range — from birth to 17 — in the area of your search.

Source: U.S. Census

Update Frequency: Annually



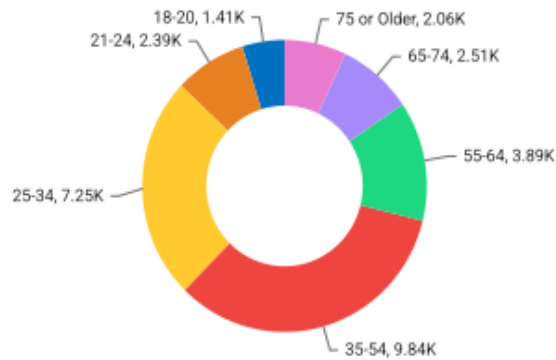
● 23.8% Toddlers ● 29.02% Elementary School ● 23.26% Middle School ● 23.93% High School

Population of Adults by Age Group in 32807

This chart shows the distribution of the population of adults by age range — from 18 to 75-plus — in the area of your search.

Source: U.S. Census

Update Frequency: Annually



● 4.81% 18-20 ● 8.15% 21-24 ● 24.7% 25-34 ● 33.51% 35-54 ● 13.25% 55-64 ● 8.56% 65-74 ● 7.03% 75 or Older

Economy

Economic Facts & Stats

	32807	Orlando	Orange County	Florida	USA
Income Per Capita	\$28,916	\$41,985	\$39,640	\$41,055	\$43,289
Median Household Income	\$63,389	\$69,268	\$77,011	\$71,711	\$78,538
Unemployment Rate	-	3.8%	4%	4.2%	4.4%
Number Unemployed	-	7K	33K	477K	7.61M
Number Employed	-	185K	800K	10.76M	163.66M
Number in Labor Force	-	192K	834K	11.24M	171.26M



MIKE GIORDANO

Winter Park
400 S Park Ave Ste 210,
Winter Park, FL 32789-4320

C. 321.418.1225
O. 407.647.1211
mike@mggteam.com



The property information herein is derived from various sources that may include, but not be limited to, county records and the Multiple Listing Service, and it may include approximations. Although the information is believed to be accurate, it is not warranted and you should not rely upon it without personal verification. Affiliated real estate agents are independent contractor sales associates, not employees. ©2022 Coldwell Banker. All Rights Reserved. Coldwell Banker and the Coldwell Banker Realty logos are trademarks of Coldwell Banker Real Estate LLC. The Coldwell Banker® System is comprised of company owned offices which are owned by a subsidiary of Realty Brokerage Group LLC and franchised offices which are independently owned and operated. The Coldwell Banker System fully supports the principles of the Equal Opportunity Act. 22GG69_NAT_6/22